



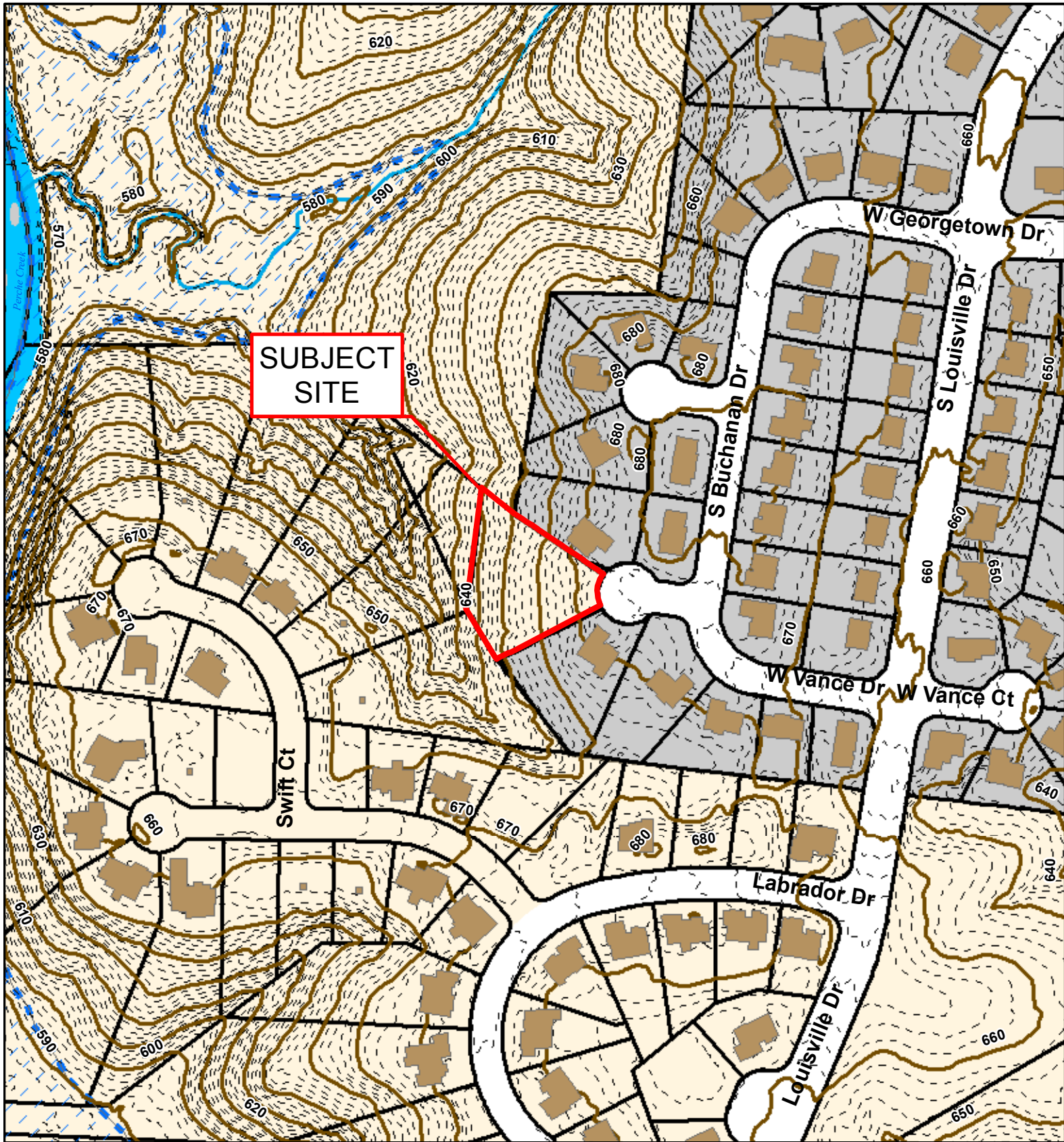
2015 Orthophoto Source: Boone County Assessor

16-203: Georgetown Point, Plat No. 1 Final Plat



- City Zoning
- Parcels
- Boone County Zoning
- Columbia City Limit

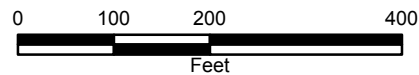


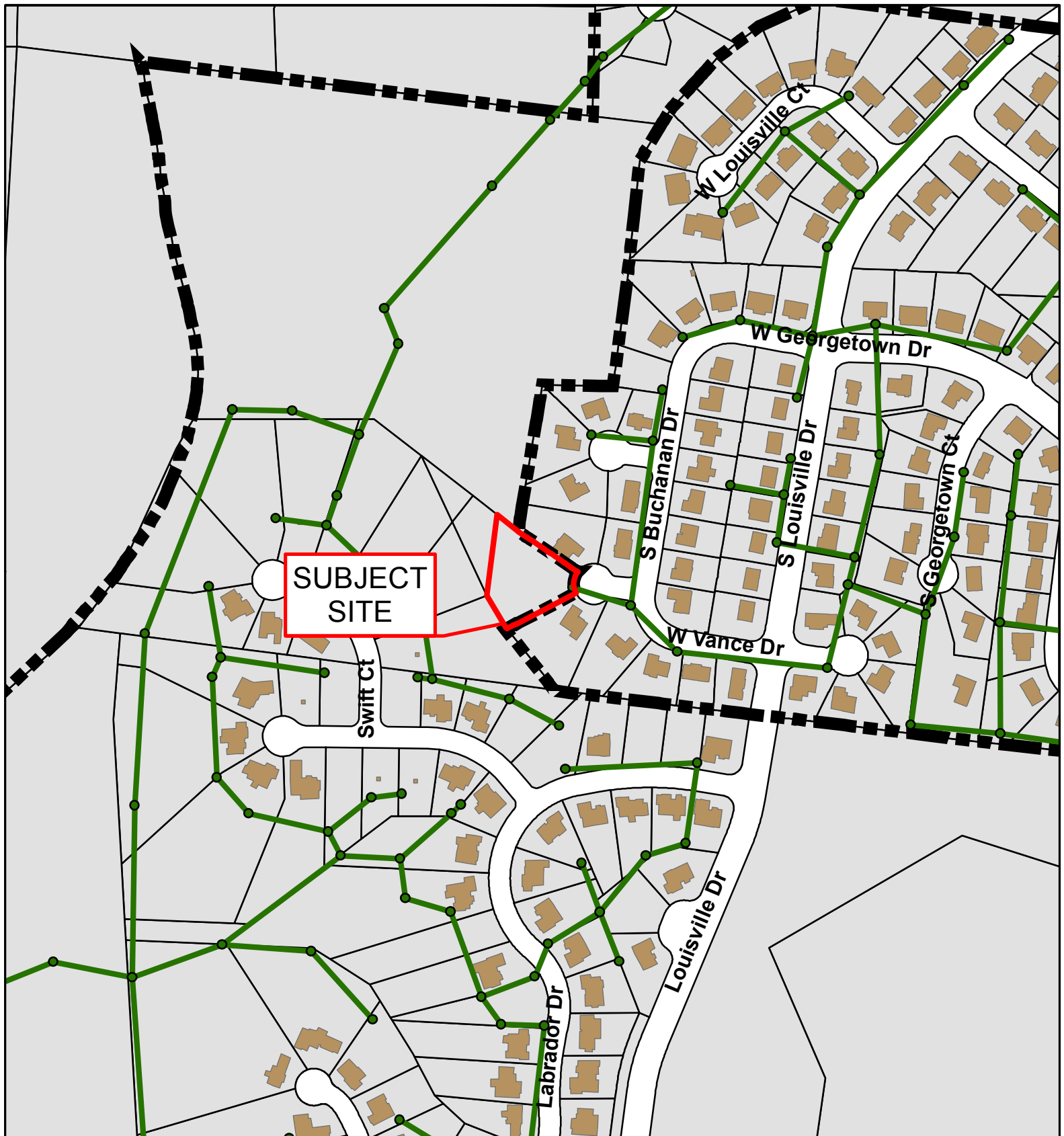


16-203: Georgetown Point, Plat No. 1 Final Plat



- 10 Foot Contour Lines
- 2 Foot Contour Lines
- Parcels
- Building Footprint





16-203: Georgetown Point, Plat No. 1 Final Plat



- City Sanitary Structure
- City Sanitary Line
- Building Footprint
- Parcels

