



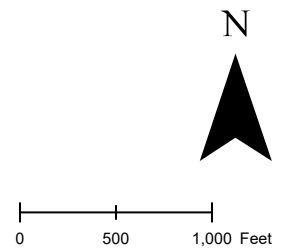
Case # 301-2025 - 3815 Hinkson Creek Rd Rezoning

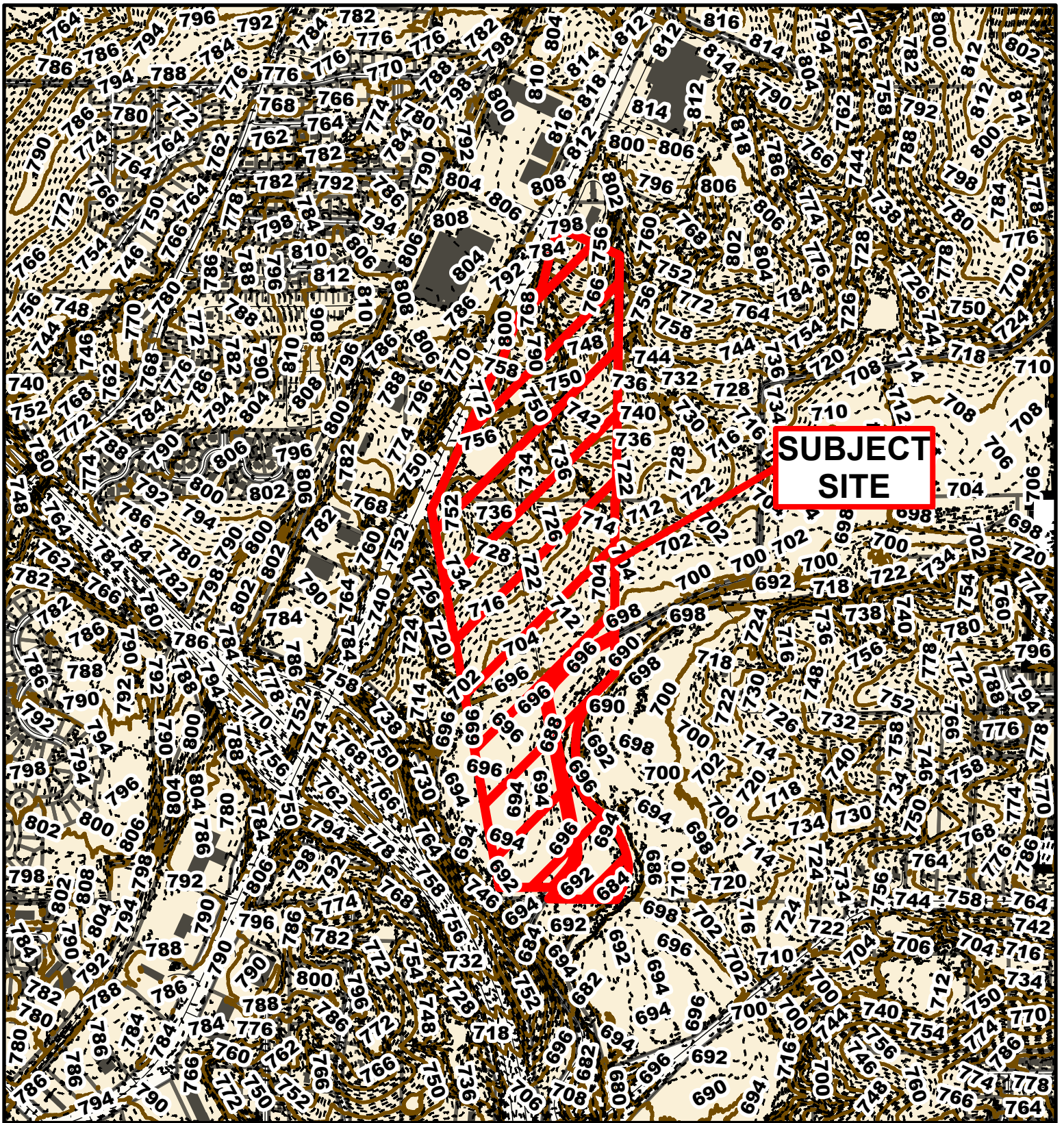


 Columbia City Limit  City Property

Parcel Data Source: Boone County Assessor
Created by The City of Columbia - Community Development Department

2024 Imagery: NearMap



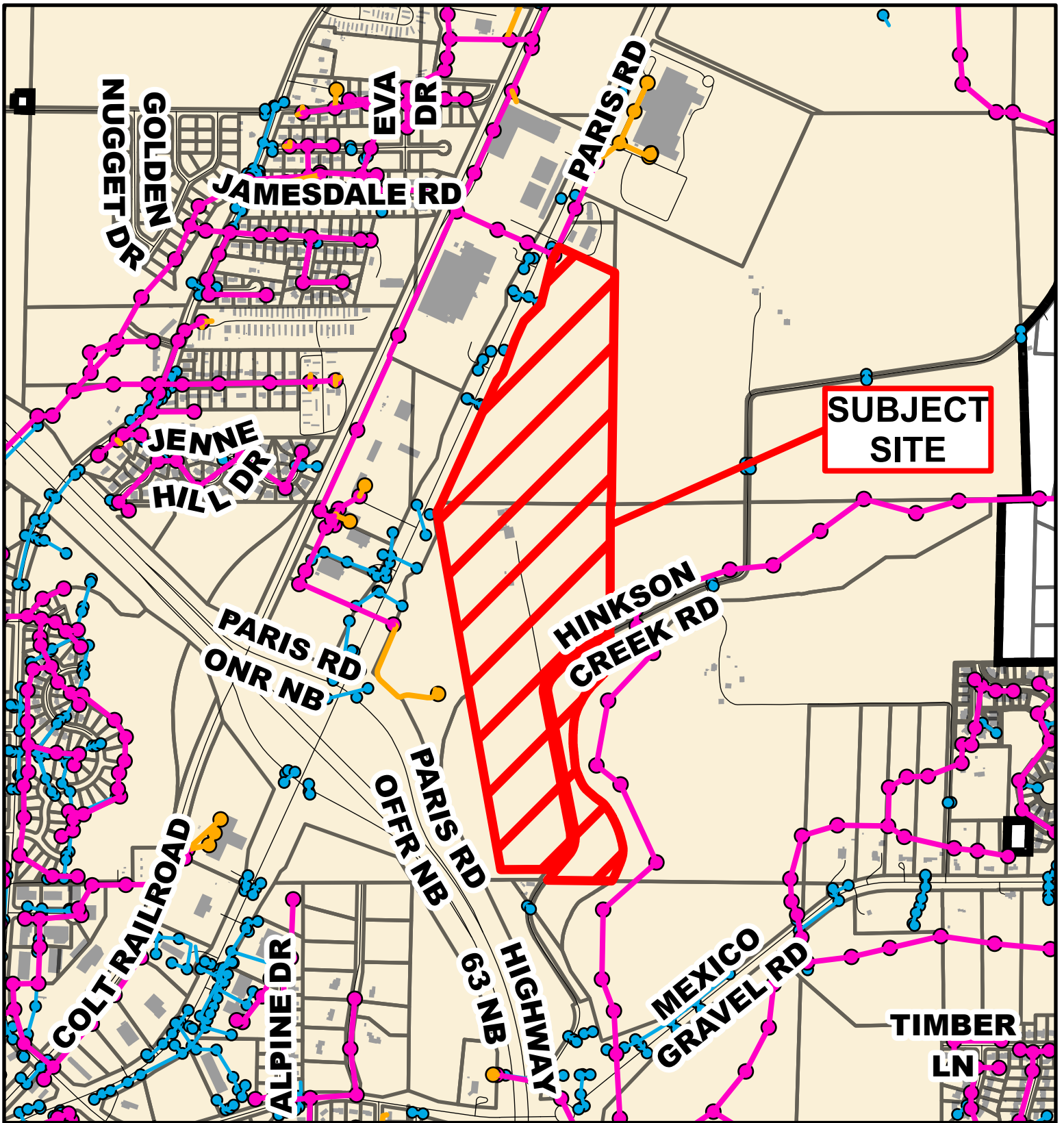


Case # 301-2025 - 3815 Hinkson Creek Rd Rezoning



- 10 Foot Contour Lines
- City of Columbia
- 2 Foot Contour Lines
- Parcels





Case # 301-2025 - 3815 Hinkson Creek Rd

Rezoning



- City Sanitary Line
- City Storm Lines
- Private Sanitary Line
- Parcels
- Columbia City Limit



Case # 301-2025
3815 Hinkson Ck. Road
Rezoning

