



# Case # 97-2025 - 206 Third Avenue, Apt. 100 STR Conditional Use Permit



Parcel Data Source: Boone County Assessor

Created by The City of Columbia - Community Development Department

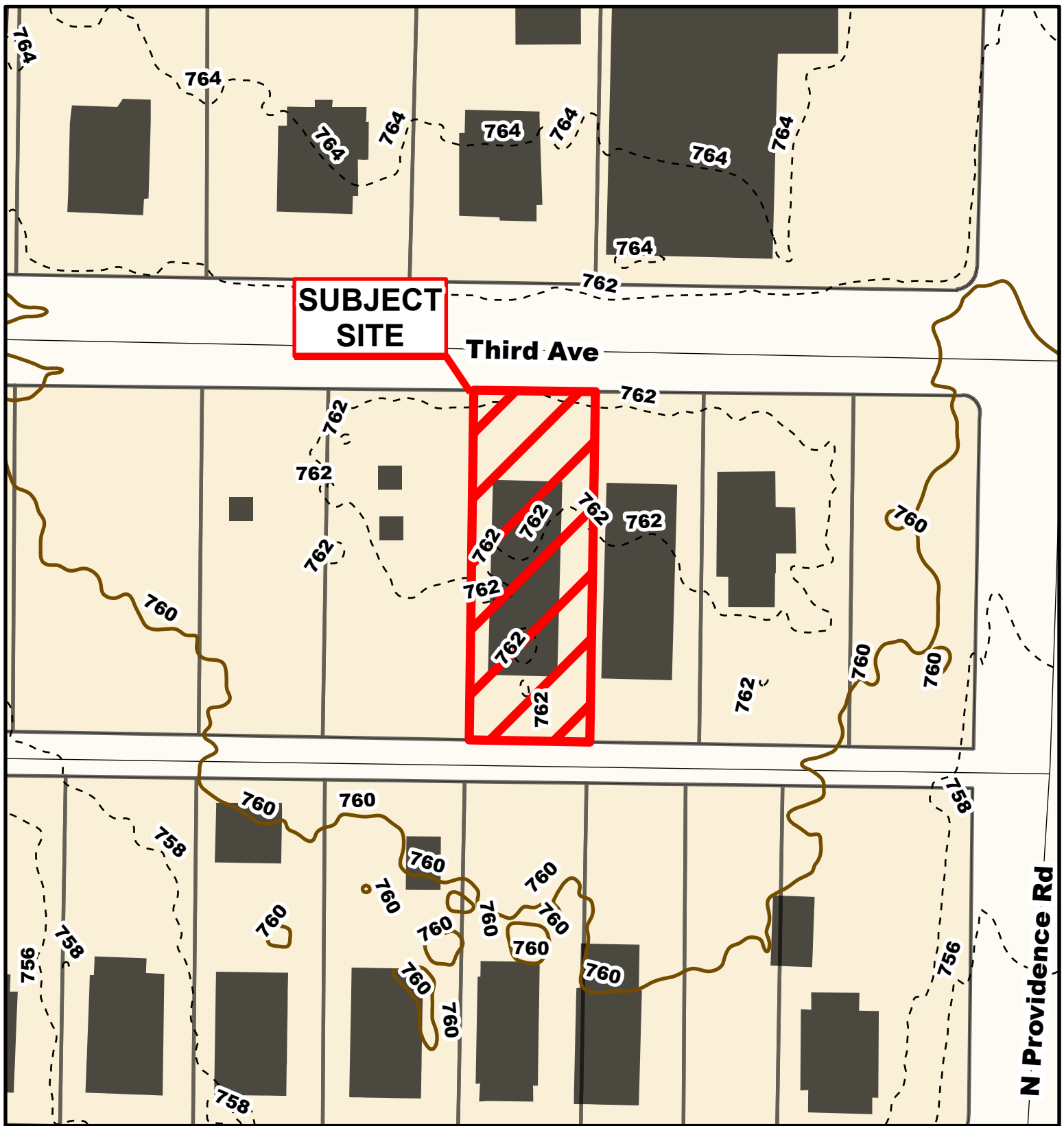
City Zoning Parcels

2022 Imagery: NearMap

0 125 250 Feet





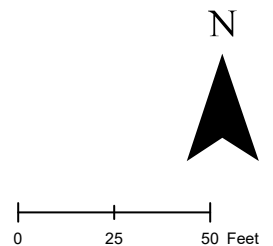


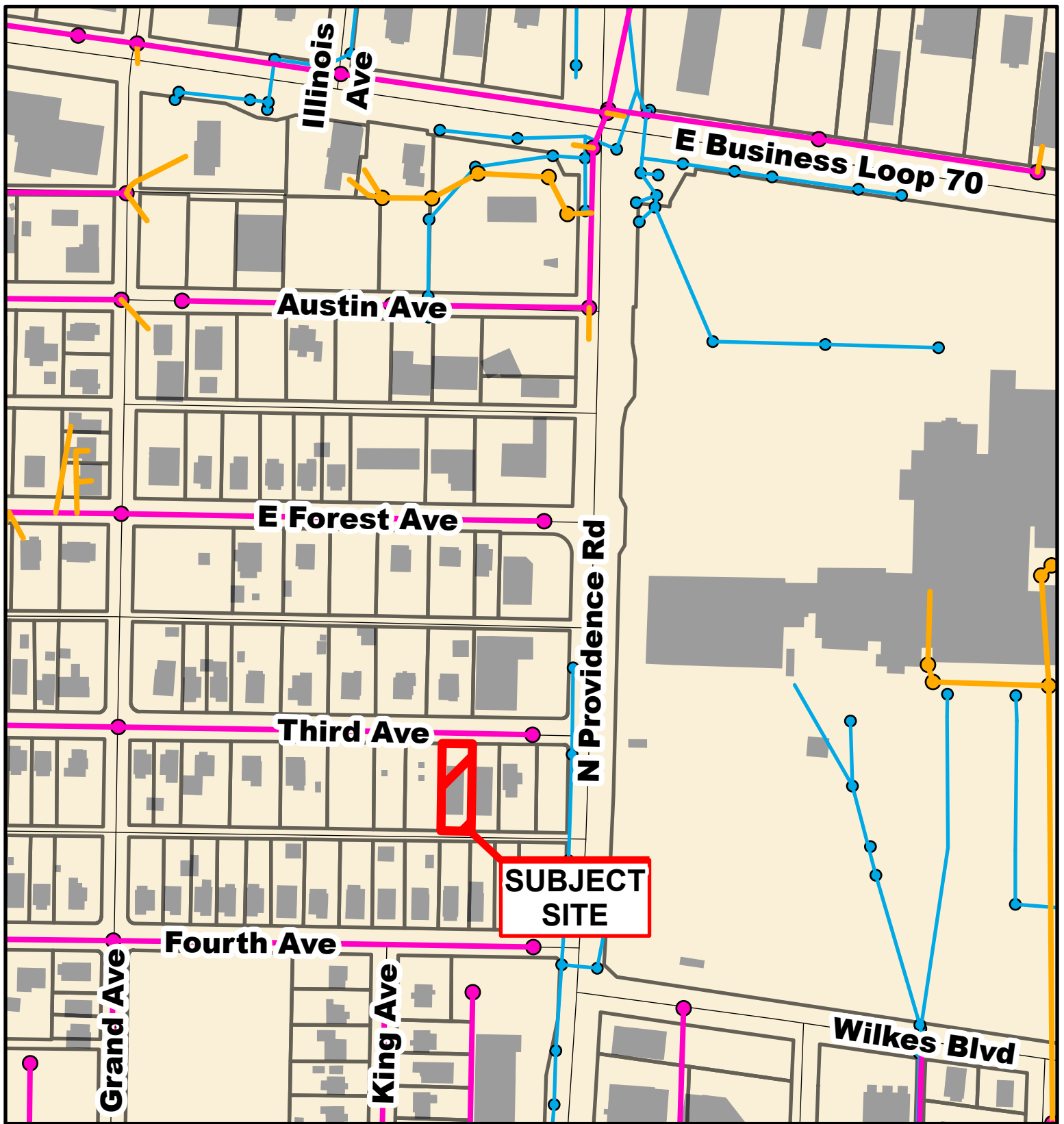
**Case # 97-2025 - 206 Third Avenue, Apt. 100**  
**STR Conditional Use Permit**



Parcel Data Source: Boone County Assessor  
Created by The City of Columbia - Community Development Department

— 10 Foot Contour Lines    □ Parcels  
- - - 2 Foot Contour Lines





# Case # 97-2025 - 206 Third Avenue, Apt. 100 STR Conditional Use Permit

