

LANDSCAPE PLANS FOR
DOLLAR GENERAL
 5905 East St. Charles Road, Columbia, MO 65202

SITE DEVELOPMENT NOTES

- Owner: Brian J. Painter
5905 East St. Charles Rd
Columbia, MO 65202
- Owner (Under Contract): The Overland Group
1598 Imperial Center, Suite 2009
West Plains, MO 65755
- Parcel ID: 172120000040001
- Site Address: 5905 East St. Charles Road
Columbia, MO 65202
- Area of Site: 1.79 AC (77972 SF)
- Proposed Uses: Retail
- Area Required for Landscaping: 11696 SF
- Area landscaped: Bioswale = 6067 SF
Buffer Zones = 5640 SF
Native Vegetation = .16 AC
- Native shrubs & grasses (2536 SF)
- Native prairie seed (4641 SF)
- Tree Requirements:

TREE REQUIREMENTS			
	City Requirement	Measurement	Required Trees
Street Frontage + Driveway	1 tree min. per 60 LF	200 LF	3
Buffer Zones	1 tree per 200 SF	5640	28
Significant Tree Replacement	25% of replacement requirements		5
			36



LOCATION MAP

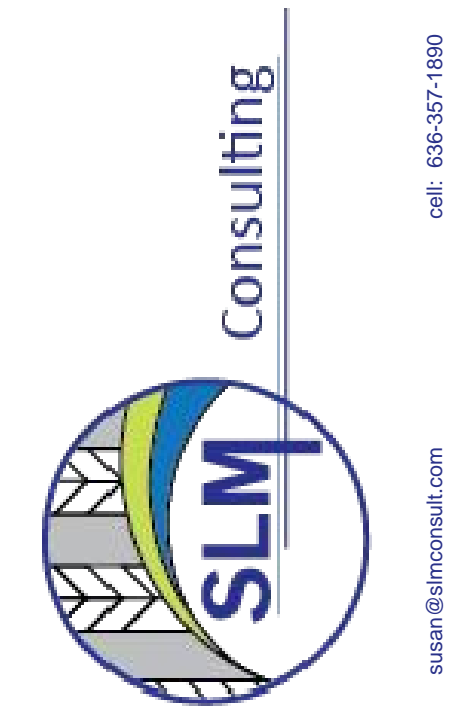
Prepared for:
The Overland Group
 c/o Rusty Doss
 1598 Imperial Center, Suite 2009
 West Plains, MO 65775

GENERAL NOTES

- Contractor shall: A.) Verify all existing and proposed features shown on drawings prior to the commencement of work. B.) Report all discrepancies found with regard to existing conditions or proposed design to the owners immediately for a decision. C.) All utilities shall be located prior to any landscape installation.
- Contractor shall be responsible for obtaining any permitting related to landscape installation.
- Plant materials shall conform to the American Standard for Nursery Stock of the American Association of Nurserymen (ANSI Z60.1)
- All plant material shall receive adequate watering until plant establishment has occurred. Minimum time period for establishment is one year.
- All landscape beds and trees shall receive 3" brown dyed mulch unless otherwise noted. Under no circumstances shall mulch exceed 1" depth around a 6" radius at base of trees. See Tree Planting Detail Sheet L-5
- All lawn areas shall be sodded or seeded with a fescue mix. Seed option should be installed with weed-free straw mulch. Sod option shall be watered and maintained until establishment.
- Amend all planting beds with organic compost containing plant material only. No animal waste should be in mix. Compost should have earthy smell, not moldy or decaying. Incorporate 2" into existing soil to a depth of 6".
- Spade cut edge all landscape beds to a depth of 4".
- Bioswale: Contractor shall follow the City of Columbia, Missouri Stormwater Management & Water Quality Manual January 1, 2013 Appendix D for installation and maintenance of bioswale.
- Bioswale Planting: Install North American Green Erosion Control Blanket EroNet S150 according to manufacturer's specifications. <https://nagreen.com/erosion-control-products/RollMax/EroNet>
- Bioswale plant material should be installed after soil has been amended and blanket has been installed.
- Native Seed Area: Sow native seed area with Hamilton Native Outpost Companion Grass Mix - Dry. Follow suggested new construction site prep, planting timeline, seeding and maintenance recommendations found on the Hamilton Native Outpost site. www.hamiltonnativeoutpost.com

SHEET INDEX

- L-1 TITLE PAGE
- L-2 LANDSCAPE PLAN
- L-3 LANDSCAPE PLAN
- L-4 LANDSCAPE PLAN
- L-5 LANDSCAPE PLAN
- L-6 LANDSCAPE PLAN - DETAILS
- L-7 TREE INVENTORY

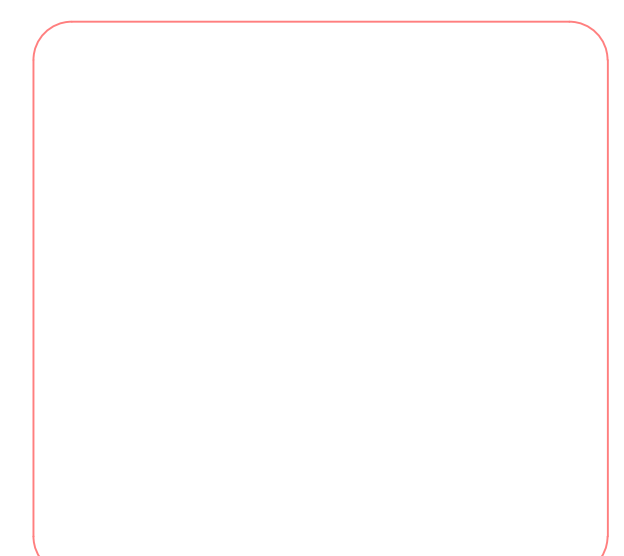


call: 636-307-1835
 email: info@slmconsulting.com
 1856 Queen Anne Ct. Wentzville, MO 63385

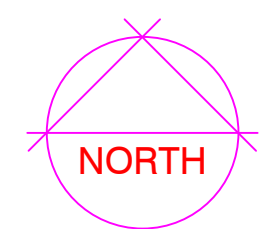
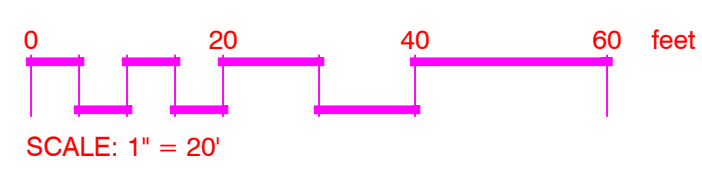
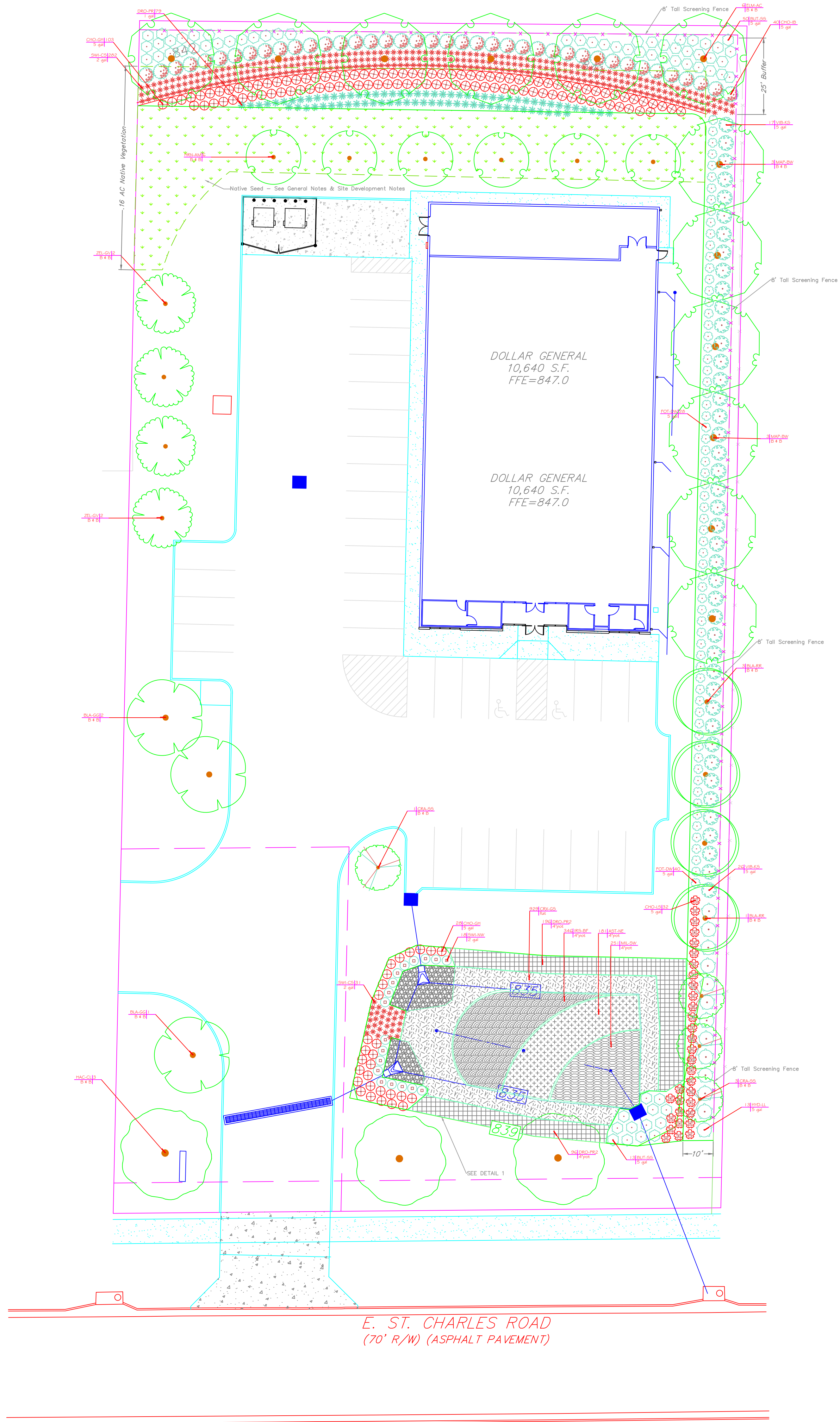
Dollar General
 5905 East St. Charles Rd., Columbia, MO 65202

TITLE PAGE

No.	Revision/Issue	Date



Drawn S. Maag	L-1
Checked	
Project No. C112	
Date 03/20/2022	
Scale	



Drawn S. Maag	L-2
Checked	
Project No. C112	
Date 03/20/2022	
Scale 1" = 20'	

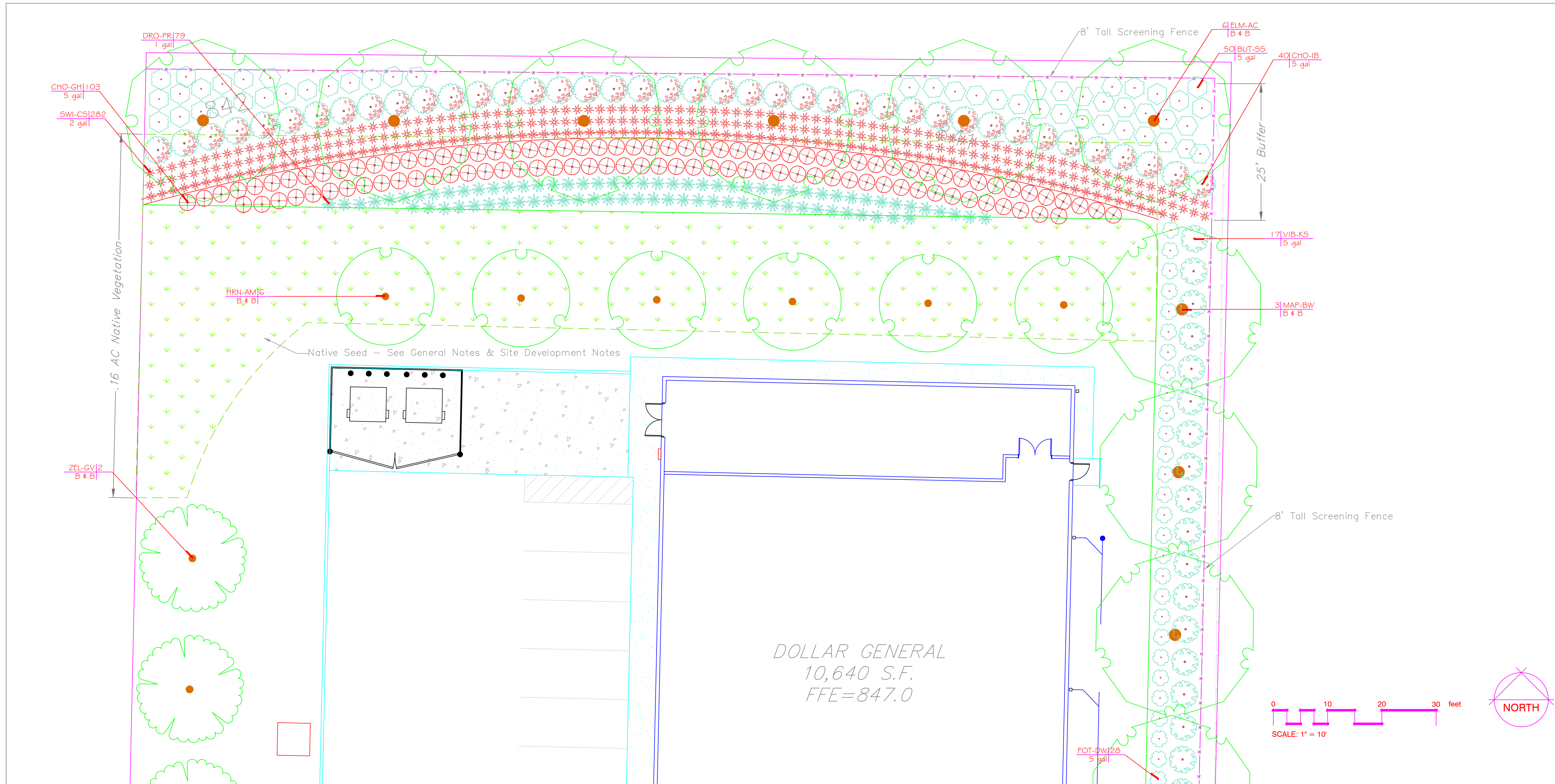
No.	Revision/Issue	Date

Dollar General
 5905 E. St. Charles Rd., Columbia, MO 65202
LANDSCAPE PLAN - PRELIMINARY



SLM Consulting

susan@slmconsult.com cell: 636-357-1890
 SLM Consulting, LLC 1856 Queen Anne Ct. Wentzville, MO 63385



PLANT SCHEDULE NORTH

TREES	CODE	BOTANICAL / COMMON NAME	CONT.	SIZE	QTY
	MAP-BW	Acer rubrum 'Brandywine' / Brandywine Red Maple	B & B	2"Cal	3
	HRN-AM	Carpinus caroliniana / American Hornbeam	B & B	2"Cal	6
	ELM-AC	Ulmus x 'Morton' TM / Accolade Elm	B & B	2"Cal	6
	ZEL-SV	Zelkova serrata 'Green Vase' / Green Vase Sawleaf Zelkova	B & B	2"Cal	2
SHRUBS	CODE	BOTANICAL / COMMON NAME	SIZE	FIELD2	QTY
	CHO-IB	Aronia melanocarpa 'Morton' TM / Iroquois Beauty Black Chokeberry	5 gal		40
	CHO-GH	Aronia melanocarpa 'GONNAMO12' TM / Ground Hug Black Chokeberry	5 gal		103
	BUT-SS	Cephalanthus occidentalis 'SMCOSS' TM / Sugar Shack Buttonbush	5 gal		50
	FOT-DW	Fothergilla gardenii / Dwarf Fothergilla	5 gal		28
	VIB-KS	Viburnum carlesii / Koreanspice Viburnum	5 gal		17

GRASS	CODE	BOTANICAL / COMMON NAME	SIZE	FIELD2	QTY
	SWI-CS	Panicum virgatum 'Cheyenne Sky' / Cheyenne Sky Switch Grass	2 gal		282
	DRO-PR	Sporobolus heterolepis / Prairie Dropseed	1 gal		79



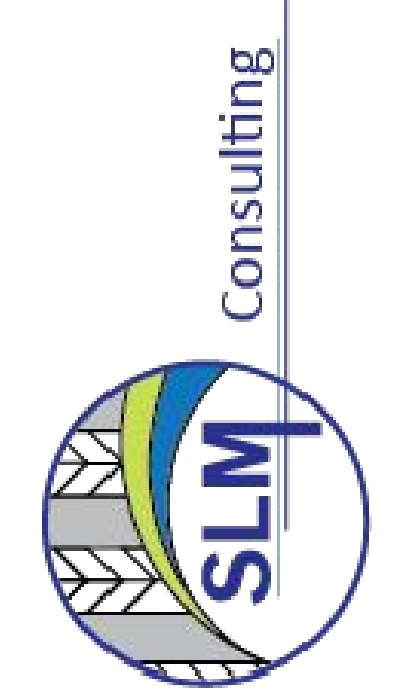
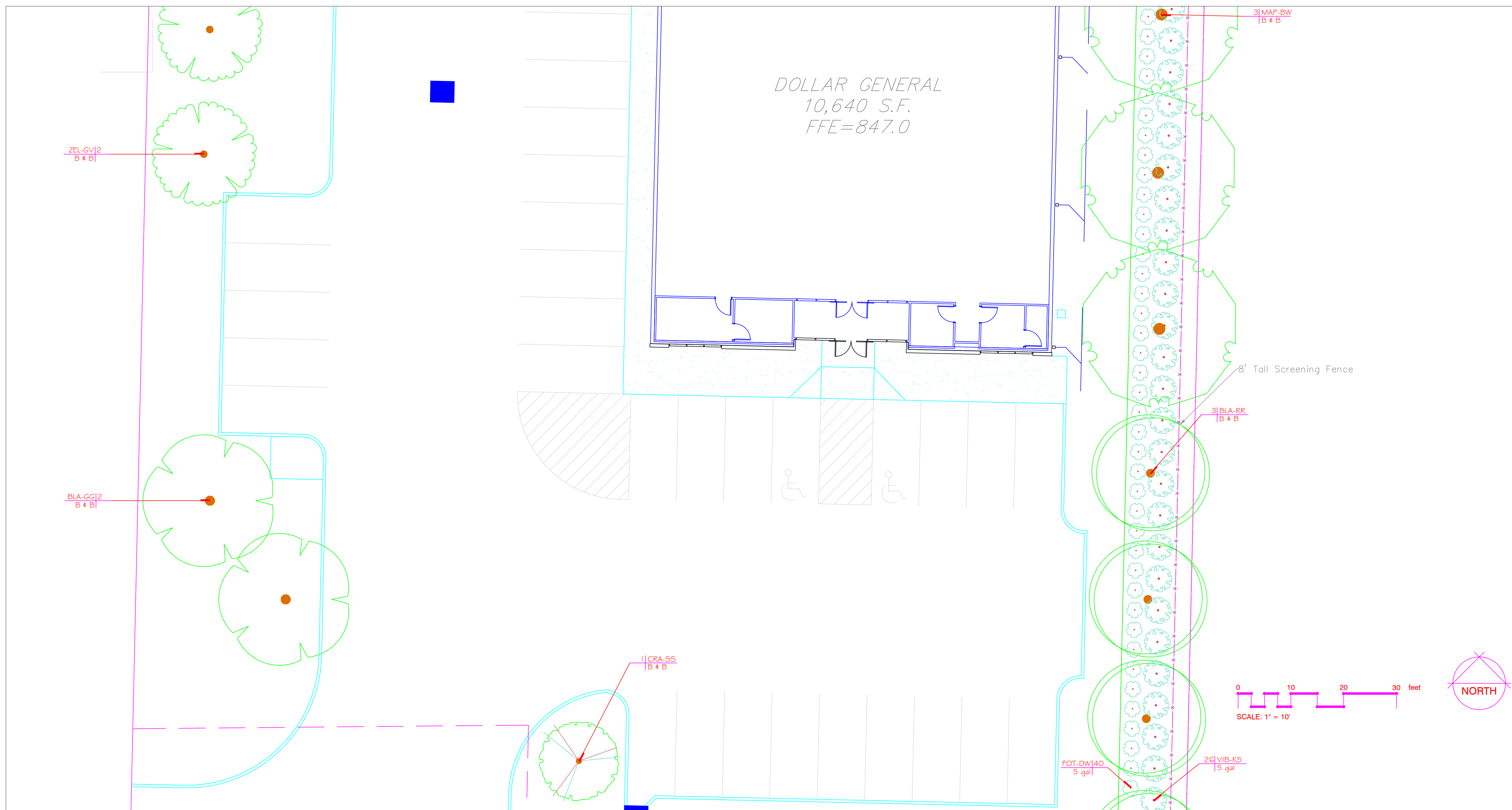
SLM Consulting
1856 Queen Anne Ct. Windsor, MO 63395
Call: 636-367-1835

Dollar General
5905 East St. Charles Rd., Columbia, MO 65202
LANDSCAPE PLAN

No.	Revision/Issue	Date



Drawn S. Maag	Sheet L-3
Checked	
Project No. C112	
Date 03/20/2022	
Scale 1" = 10'	



call: 636-307-1635
 Email: Bill@slmconsulting.com
 SLM Consulting, LLC 1856 Queen Anne Ct. Wentzville, MO 63385

Dollar General
 5905 East St. Charles Rd., Columbia, MO 65202
LANDSCAPE PLAN

No.	Revision/Issue	Date

PLANT SCHEDULE CENTER

TREES	CODE	BOTANICAL / COMMON NAME	CONT	GAL	QTY
	MAP-BW	Acer rubrum 'Brandywine' / Brandywine Red Maple	B & B	2" Cal	3
	CRA-SS	Malus x 'Spring Snow' / Spring Snow Crabapple	B & B	2" Cal	1
	BLA-RR	Nyssa sylvatica 'Haymanred' TM / Red Rage Tupelo	B & B	2" Cal	3
	BLA-GG	Nyssa sylvatica 'NSUHH' TM / Green Gable Tupelo	B & B	2" Cal	2
	ZEL-GV	Zelkova serrata 'Green Vase' / Green Vase Sawleaf Zelkova	B & B	2" Cal	2
SHRUBS	CODE	BOTANICAL / COMMON NAME	SIZE	FIELD2	QTY
	FOT-DW	Fothergilla gardenii / Dwarf Fothergilla	5 gal		40
	VIB-KS	Viburnum carlesii / Koreanspice Viburnum	5 gal		26

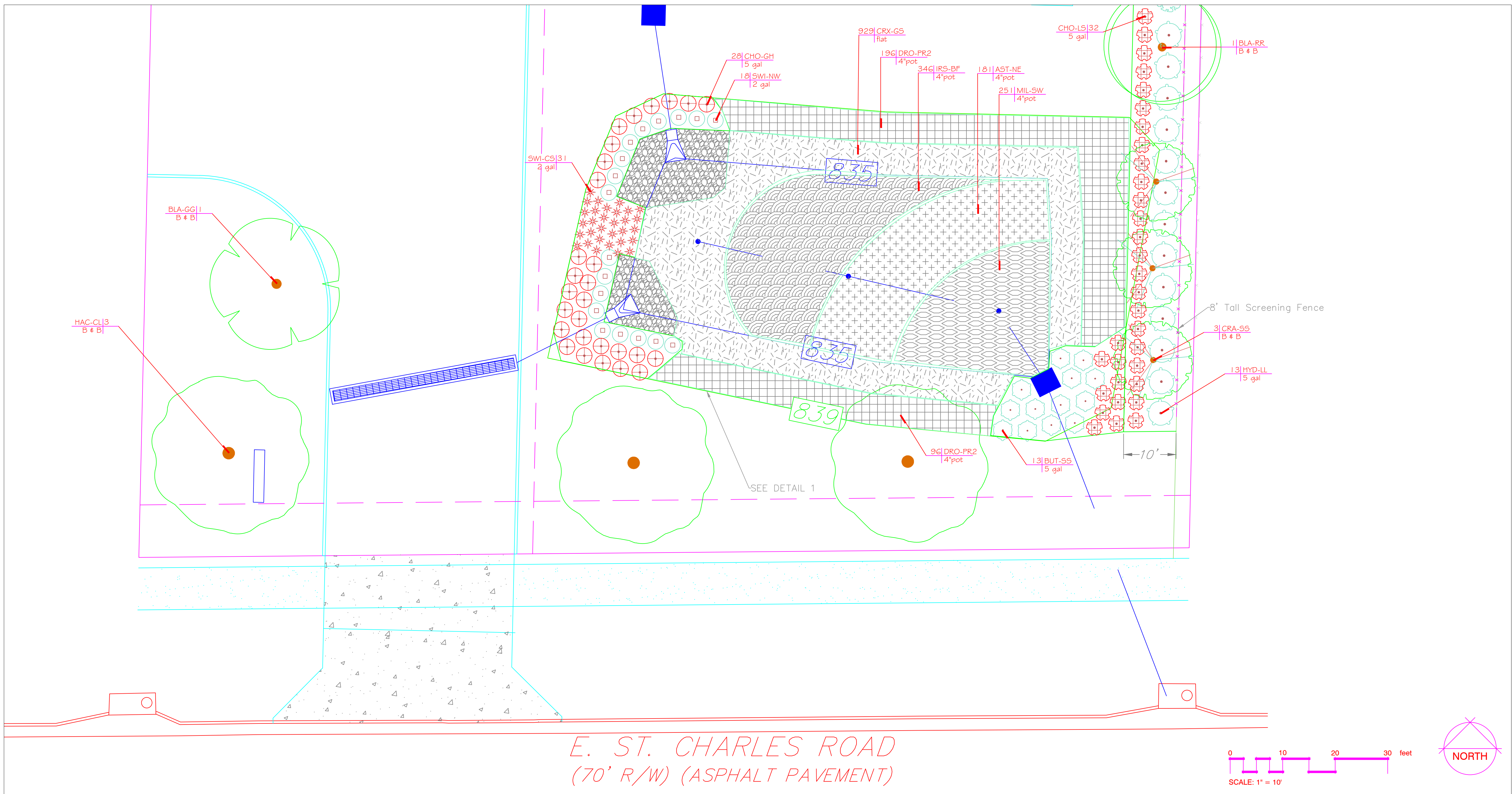
Drawn S. Maag	Sheet L-4
Checked	
Project No. C112	
Date 03/20/2022	
Scale 1" = 10'	



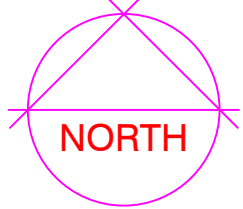
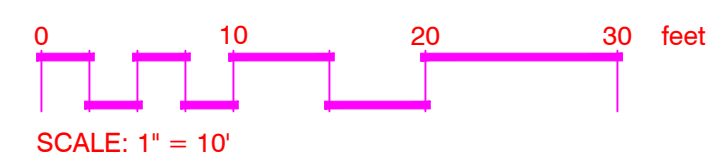
SLM Consulting, LLC
1866 Queen Anne Ct., Wentzville, MO 63385
Call: 636-307-1635
Email: SLM@slmconsulting.com

Dollar General
5905 East St. Charles Rd., Columbia, MO 65202

LANDSCAPE PLAN



E. ST. CHARLES ROAD
(70' R/W) (ASPHALT PAVEMENT)



PLANT SCHEDULE SOUTH

TREES	CODE	BOTANICAL / COMMON NAME	CONT.	GAL.	QTY.
	HAC-CL	<i>Celtis occidentalis</i> 'Chicagoland' / Chicagoland Hackberry	B & B	2"Gal	3
	CRA-SS	<i>Malus x 'Spring Snow'</i> / Spring Snow Crabapple	B & B	2"Gal	3
	BLA-RR	<i>Nyssa sylvatica</i> 'Haymanred' TM / Red Rage Tupelo	B & B	2"Gal	1
	BLA-GG	<i>Nyssa sylvatica</i> 'NSUHH' TM / Green Gable Tupelo	B & B	2"Gal	1

SHRUBS	CODE	BOTANICAL / COMMON NAME	SIZE	FIELD2	QTY.
	CHO-GH	<i>Aronia melanocarpa</i> 'CONNAM012' TM / Ground Hug Black Chokeberry	5 gal		28
	CHO-LS	<i>Aronia melanocarpa</i> 'CONNAM165' TM / Low Scape Mound Black Chokeberry	5 gal		32
	BUT-SS	<i>Cephalanthus occidentalis</i> 'SMCOSS' TM / Sugar Shack Buttonbush	5 gal		13
	HYD-LL	<i>Hydrangea paniculata</i> 'Jane' TM / Little Lime Panicle Hydrangea	5 gal		13

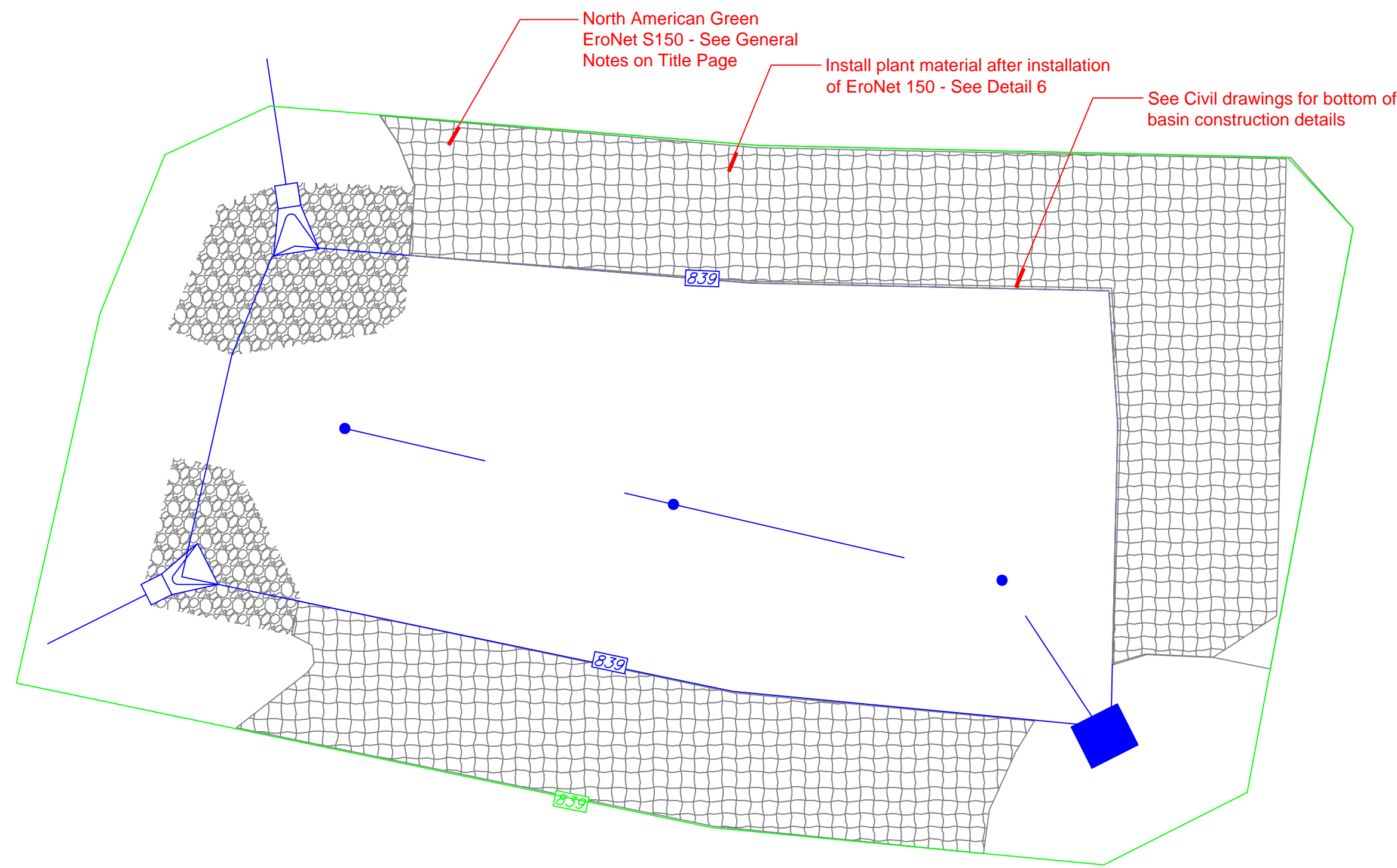
GRASS	CODE	BOTANICAL / COMMON NAME	SIZE	FIELD2	QTY.
	SWI-CS	<i>Panicum virgatum</i> 'Cheyenne Sky' / Cheyenne Sky Switch Grass	2 gal		31
	SWI-NW	<i>Panicum virgatum</i> 'Northwind' / Northwind Switch Grass	2 gal		18

BIOWALE	CODE	BOTANICAL / COMMON NAME	CONT.	FIELD2	SPACING	QTY.
	MIL-SW	<i>Asclepias incarnata</i> / Swamp Milkweed	4"pot		18" o.c.	251
	AST-NE	<i>Aster novae-angliae</i> / New England Aster	4"pot		24" o.c.	181
	CRX-GS	<i>Carex grayi</i> / Gray's Sedge	Flat		15" o.c.	929
	IRS-BF	<i>Iris virginica</i> / Blue Flag Iris	4"pot		18" o.c.	346
	DRO-PR2	<i>Sporobolus heterolepis</i> / Prairie Dropseed	4"pot		24" o.c.	292

No.	Revision/Issue	Date

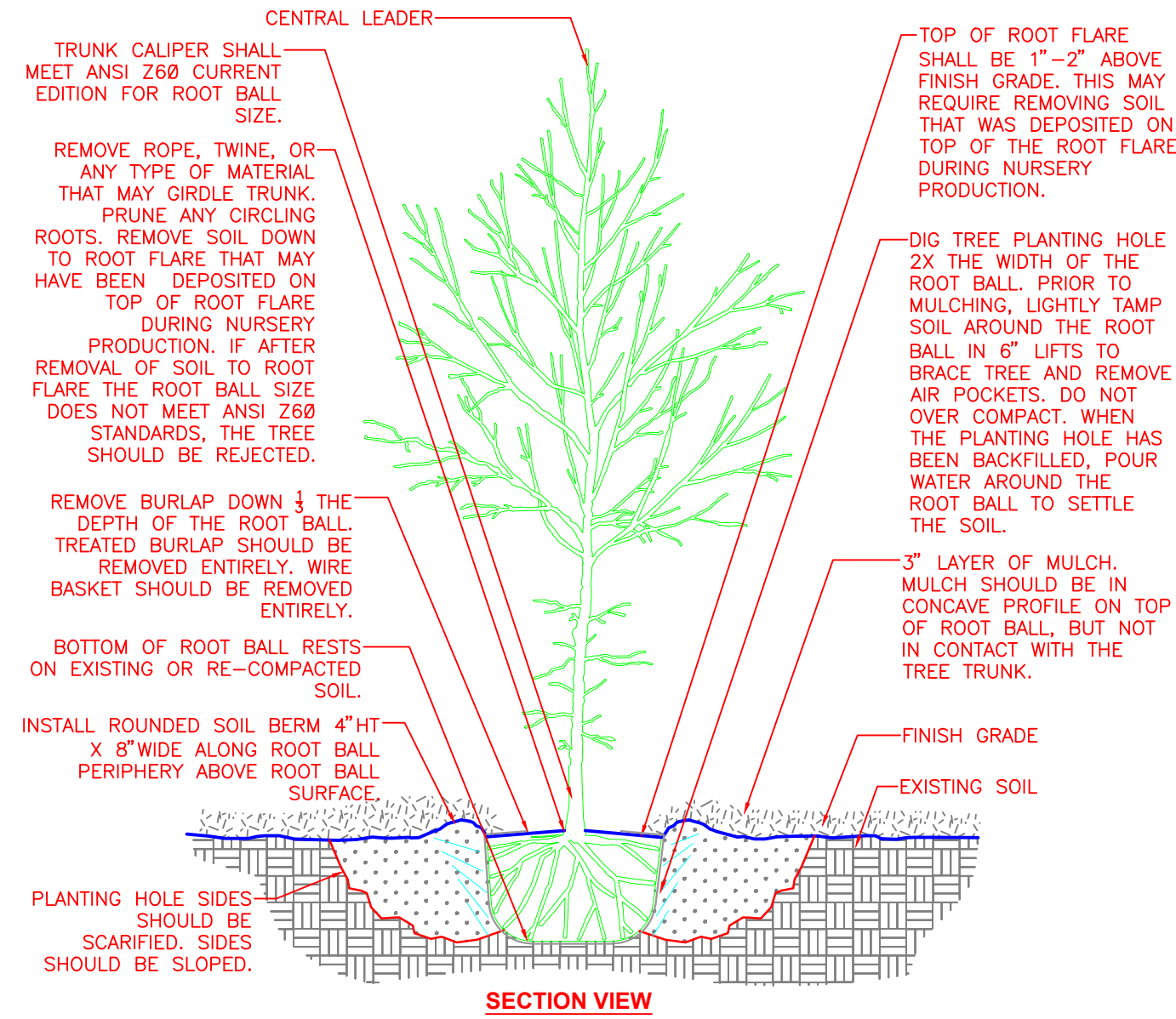


Drawn S. Maag	Sheet L-5
Checked	
Project No. C112	
Date 03/20/2022	
Scale 1" = 10'	



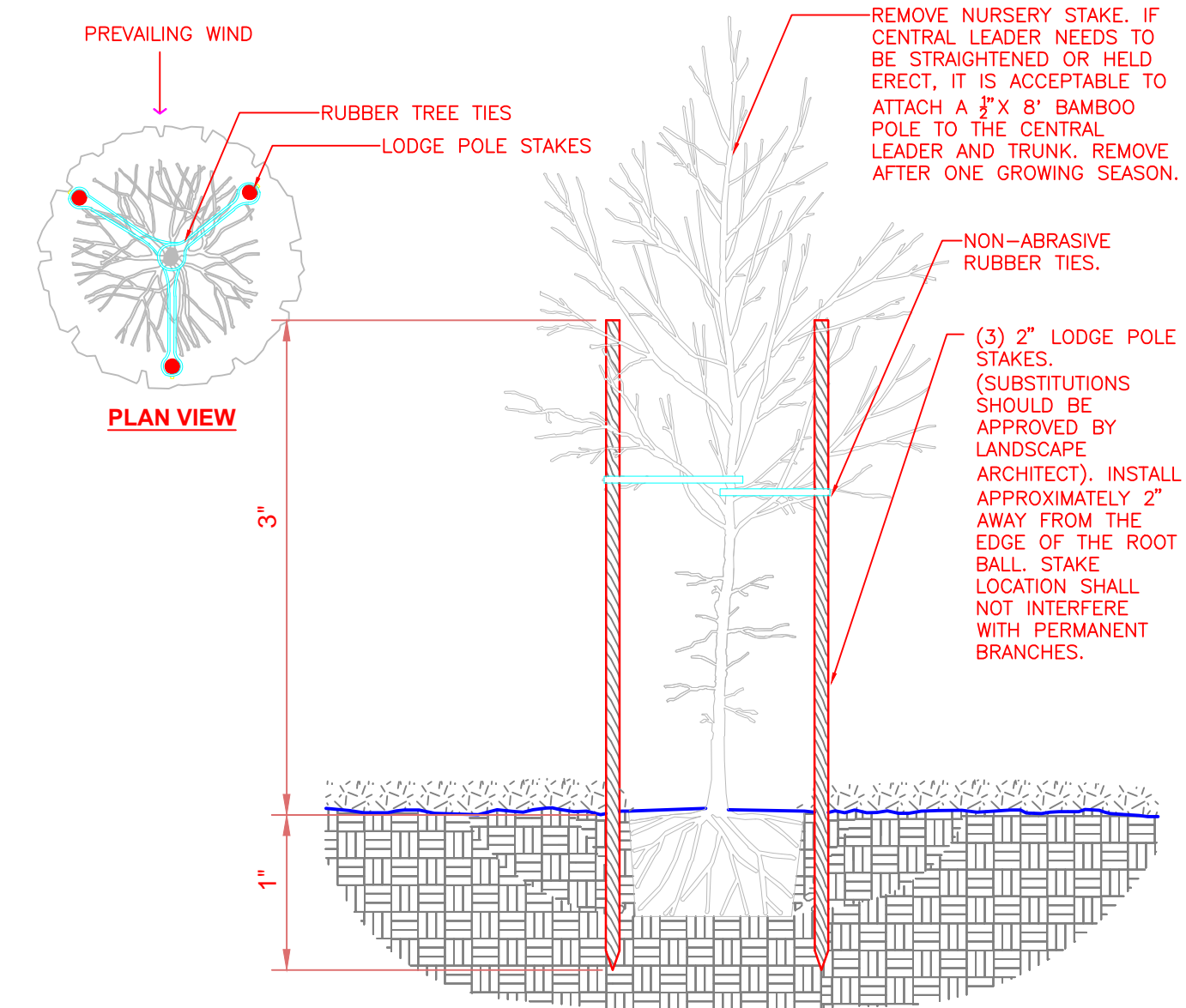
1 BIOSWALE TURF REINFORCEMENT MAT

NTS



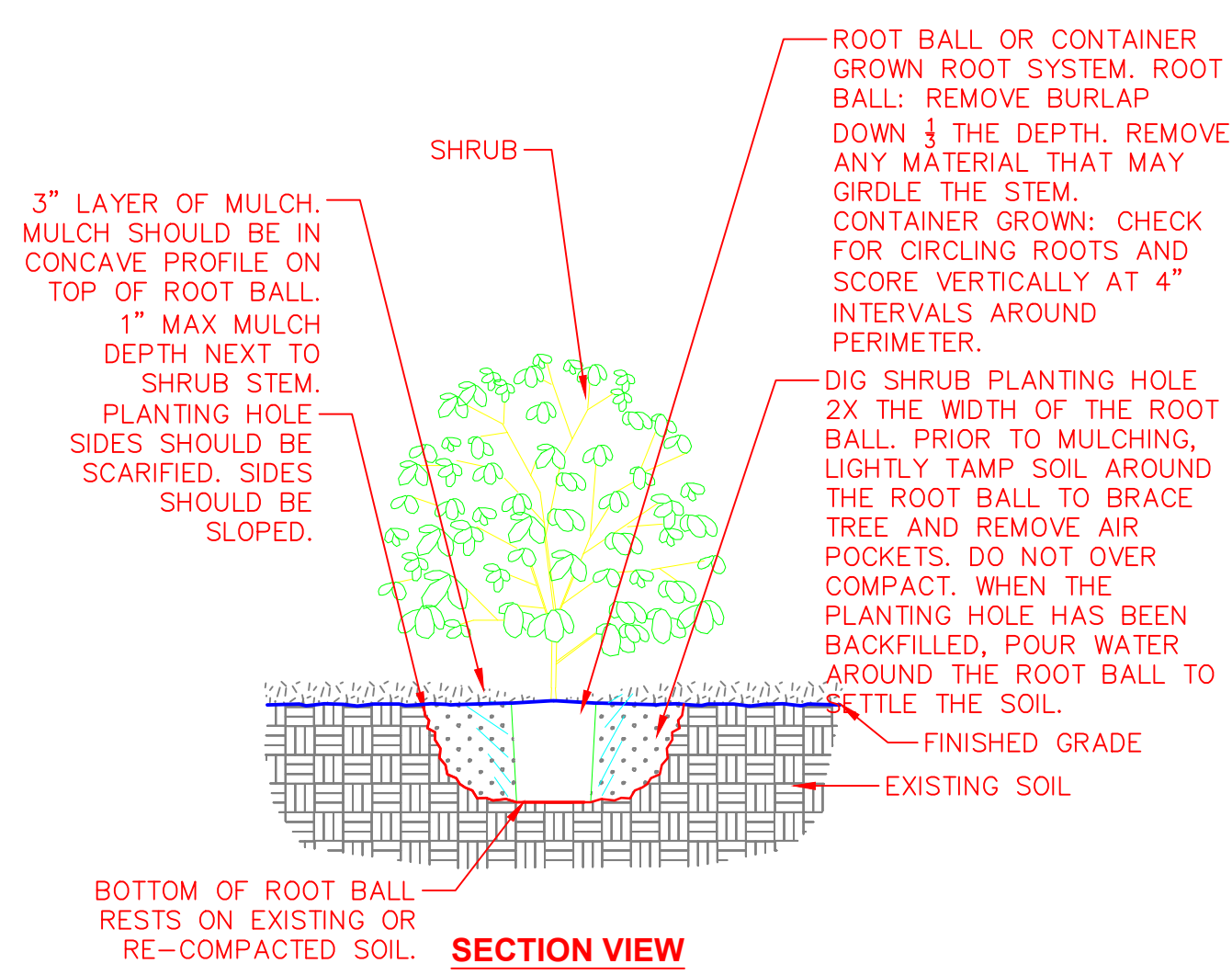
2 TREE PLANTING

NTS



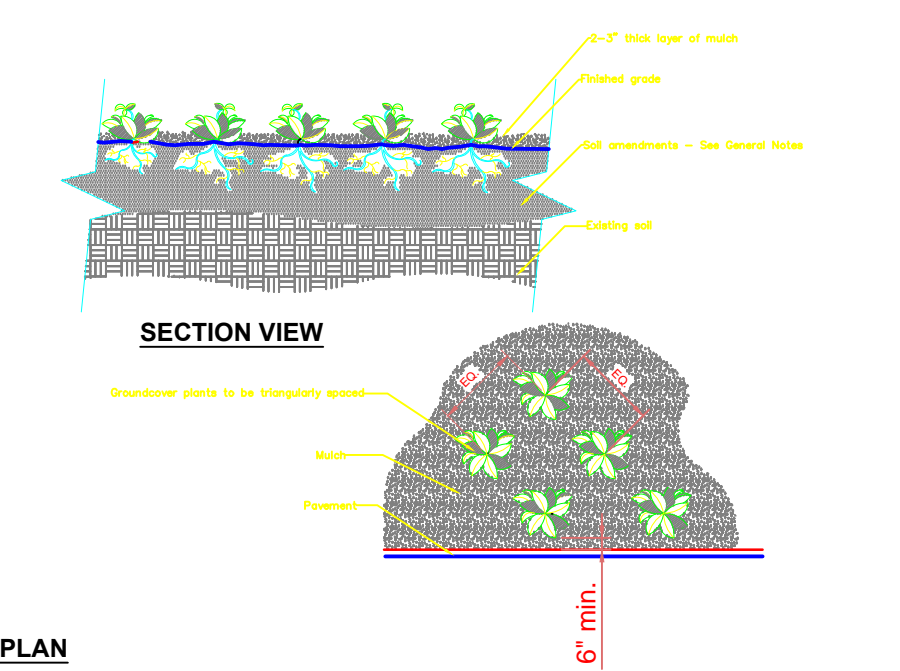
3 TREE STAKING

NTS



4 SHRUB PLANTING

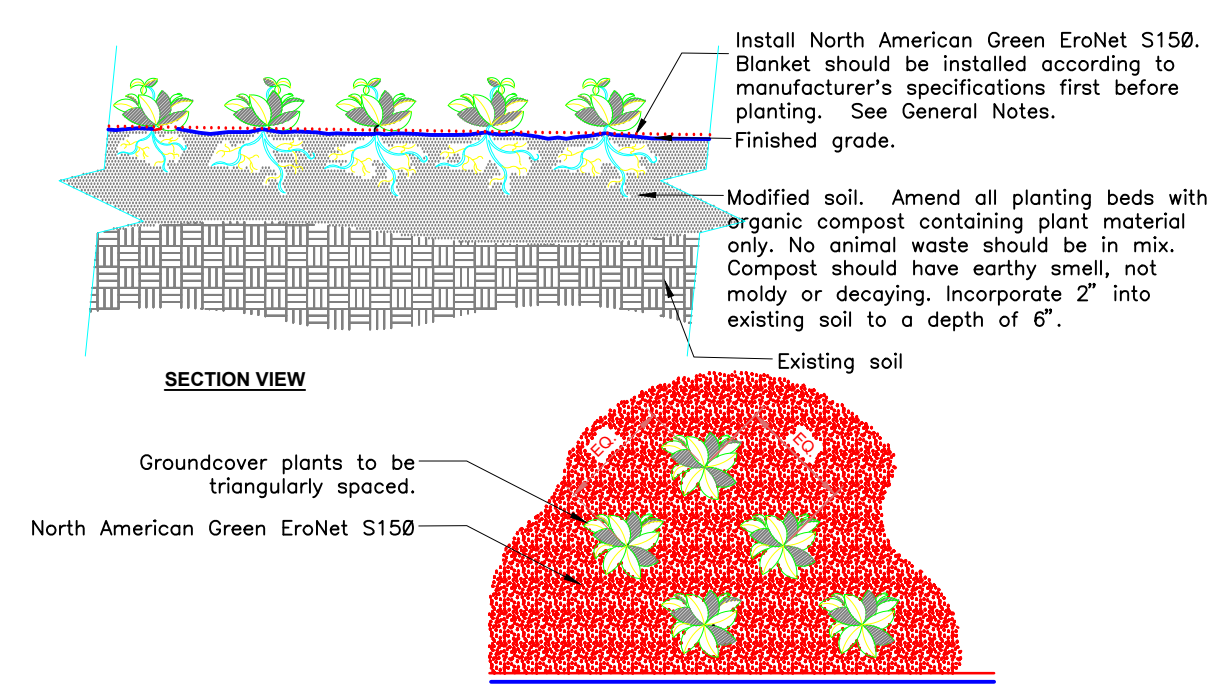
NTS



- PLAN**
1. See planting schedule for groundcover species, size, and spacing dimension.
 2. Small roots (1/4" or less) that grow around, up, or down the root ball periphery are considered a normal condition in container production and are acceptable however they should be eliminated at the time of planting. Roots on the periphery can be removed at the time of planting.
 3. Settle soil around root ball of each groundcover prior to mulching.

5 GROUNDCOVER PLANTING

NTS



- PLAN**
- 1- See planting schedule for plant species, size, and spacing dimension.
 - 2- Small roots (1/4" or less) that grow around, up, or down the root ball periphery are considered a normal condition in container production and are acceptable however they should be eliminated at the time of planting. Roots on the periphery can be removed at the time of planting.
 - 3- Settle soil around root ball of each plant.

6 BIOSWALE PLANTING

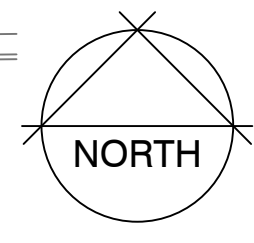
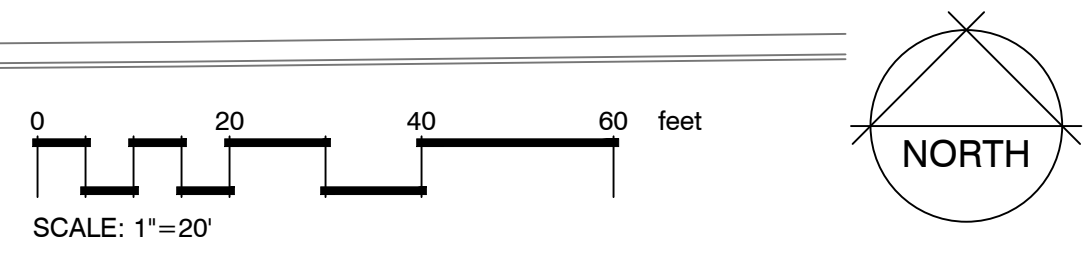
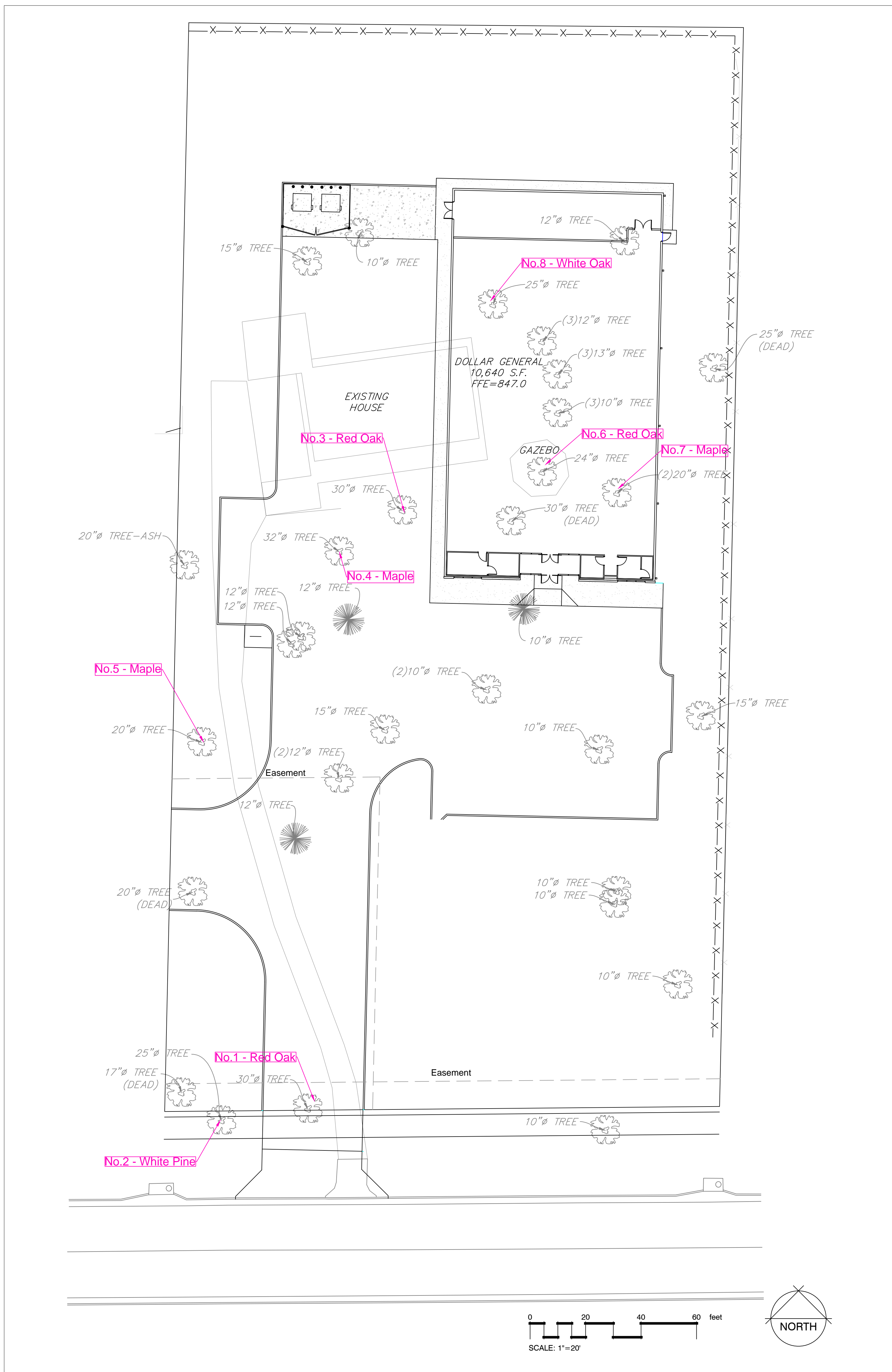
NTS



Dollar General
5905 East St. Charles Rd., Columbia, MO 65202
LANDSCAPE PLAN - Details

No.	Revision/Issue	Date

Drawn S. Maag	Sheet L-6
Checked	
Project No. C112	
Date 03/20/2022	
Scale	



SIGNIFICANT TREE REPLACEMENT					3 TREE REPLACEMENT REQUIREMENT PER SIGNIFICANT TREE		REPLACE 25% SIGNIFICANT TREES
CODE	SIGNIFICANT TREE TBR	DBH	TREE CREDIT	QTY			
1	Red Oak (in easement)	30					
2	White Pine (in easement)	25					
3	Red Oak	30		1	3		
4	Maple	32		1	3		
5	Maple	20		1	3		
6	Red Oak	24		1	3		
7	Maple	20		1	3		
8	White Oak	25		1	3		
			0	6	18	4.5	

NOTES

1. Tree inventory analysis is derived from survey provided by engineering group.
2. 20 DBH ash tree is not included in inventory due to 100% mortality of the emerald ash borer insect.

Drawn S. Maag	Sheet L-7
Checked	
Project No.	
Date 03/20/2022	
Scale 1" = 20'	



No.	Revision/Issue	Date

Dollar General
 5909 East St. Charles Dr., Columbia, MO 65202

TREE INVENTORY

SLM Consulting

susan@slmconsult.com cell: 636-357-1890
 SLM Consulting, LLC 1856 Queen Anne Ct. Wentzville, MO 63385