



## Case # 134-2024 - 3307 Barberry Avenue Final Plat & Design Adjustment



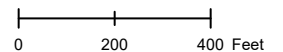
 City Zoning  Parcels

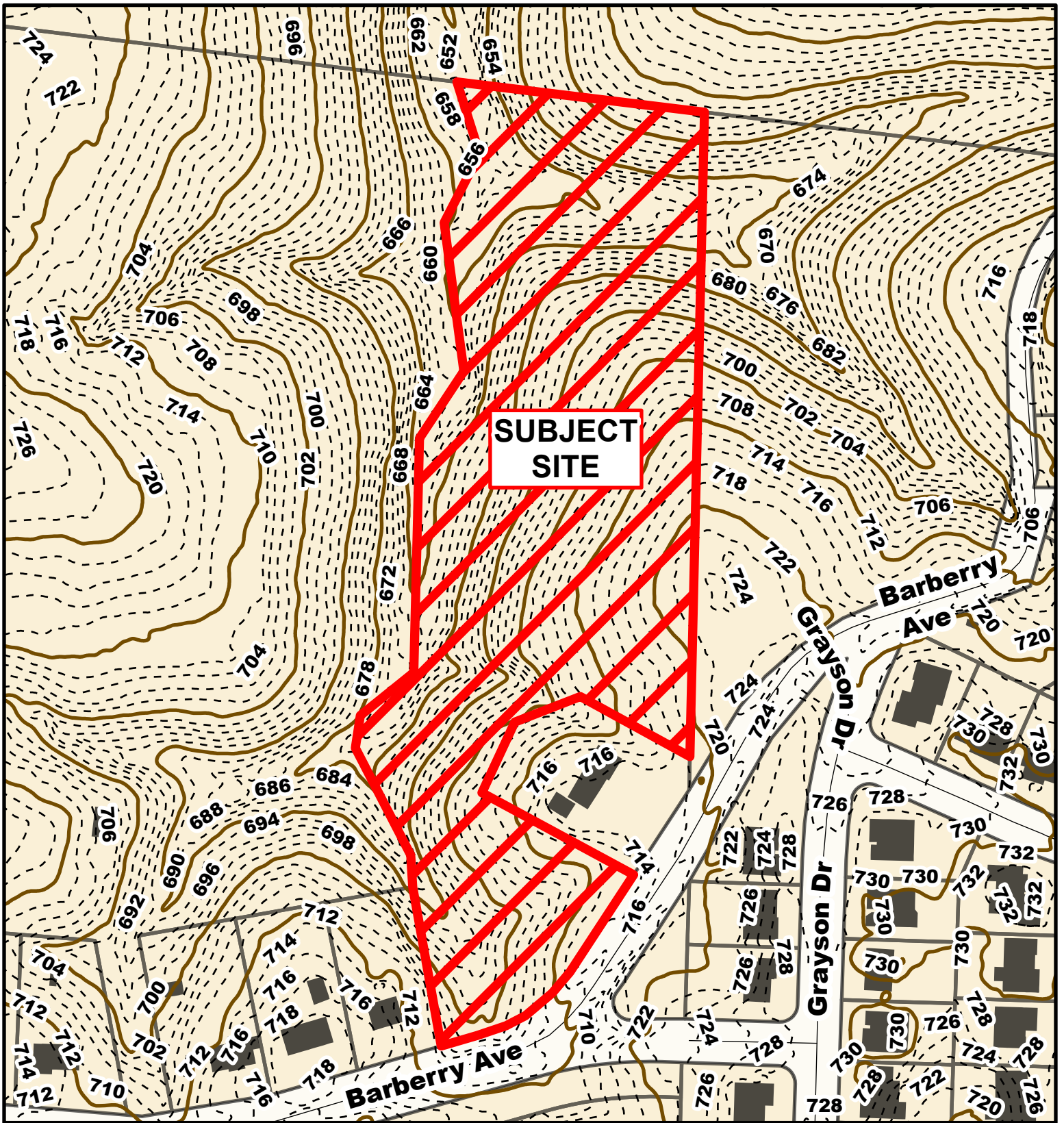


Parcel Data Source: Boone County Assessor

Created by The City of Columbia - Community Development Department

2022 Imagery: NearMap

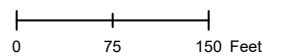


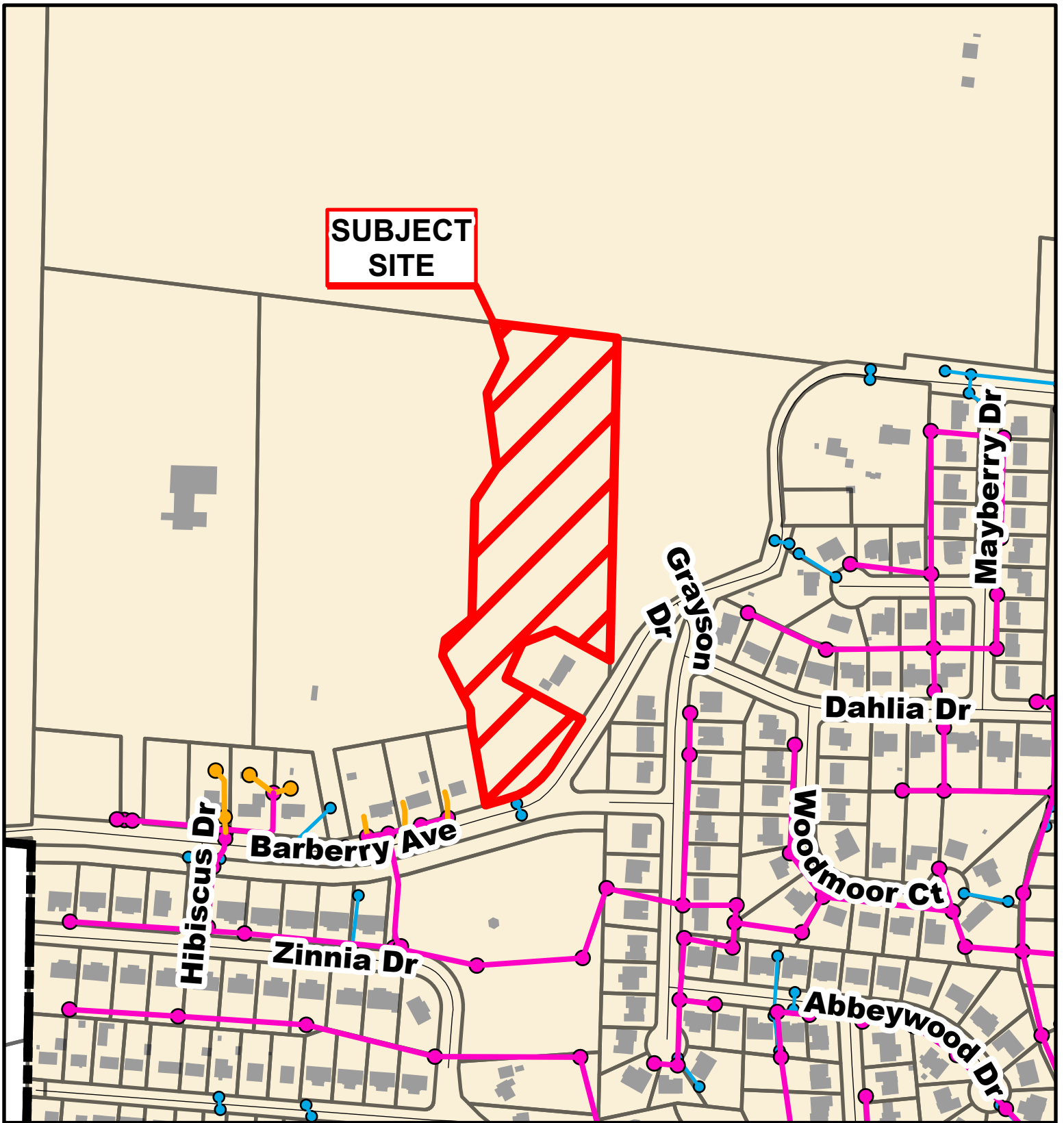


**Case # 134-2024 - 3307 Barberry Avenue**  
**Final Plat & Design Adjustment**



- 10 Foot Contour Lines
- 2 Foot Contour Lines
- Parcels





**Case # 134-2024 - 3307 Barberry Avenue**  
**Final Plat & Design Adjustment**



- City Sanitary Line
- City Storm Lines
- Private Sanitary Line
- Parcels

