





## Case # 187-2024 - Gentry Estates Lots 2 & 3 Final Plat



 City Zoning  Parcels

Parcel Data Source: Boone County Assessor

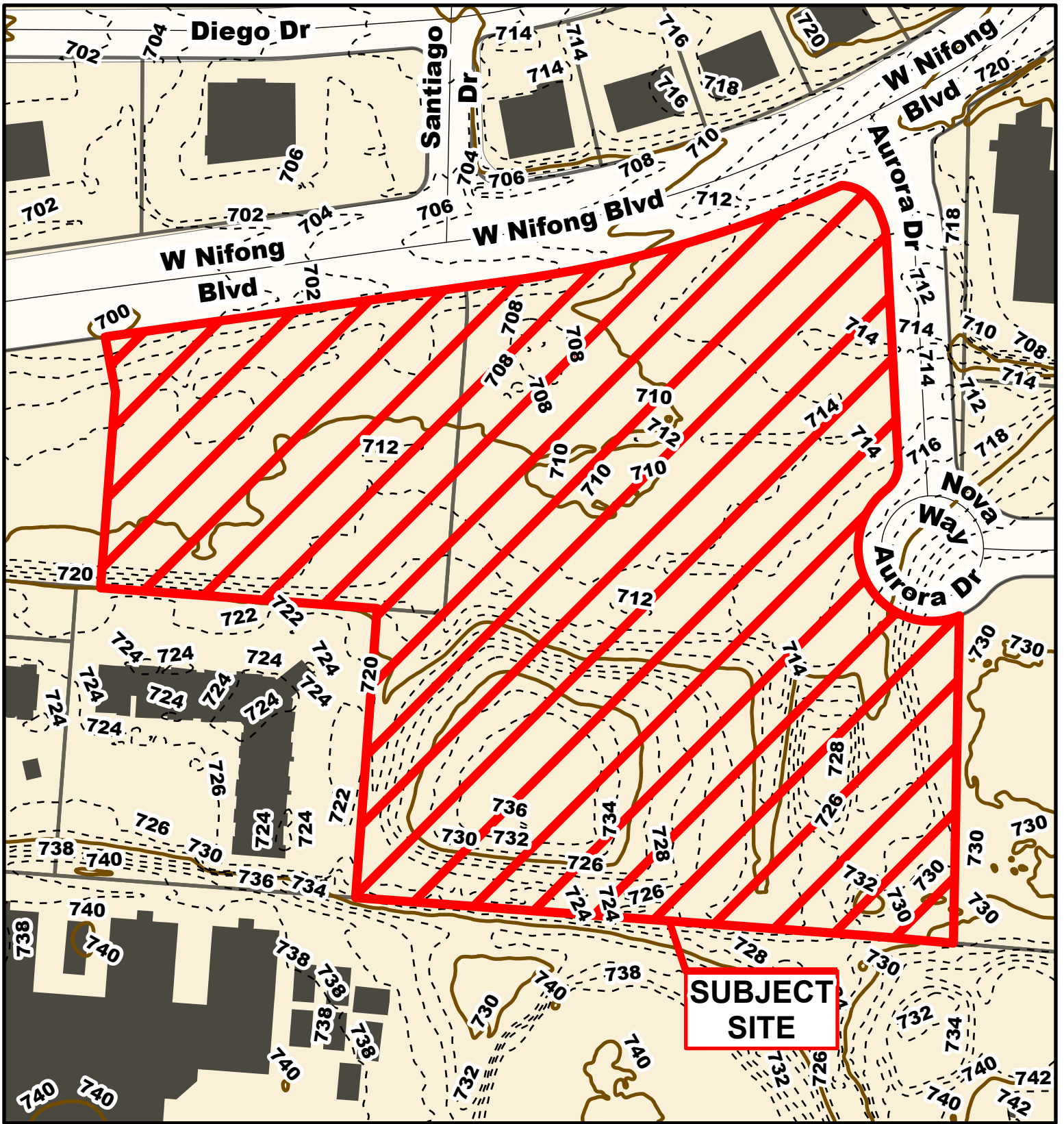
Created by The City of Columbia - Community Development Department

2022 Imagery: NearMap

0 200 400 Feet

N

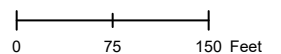


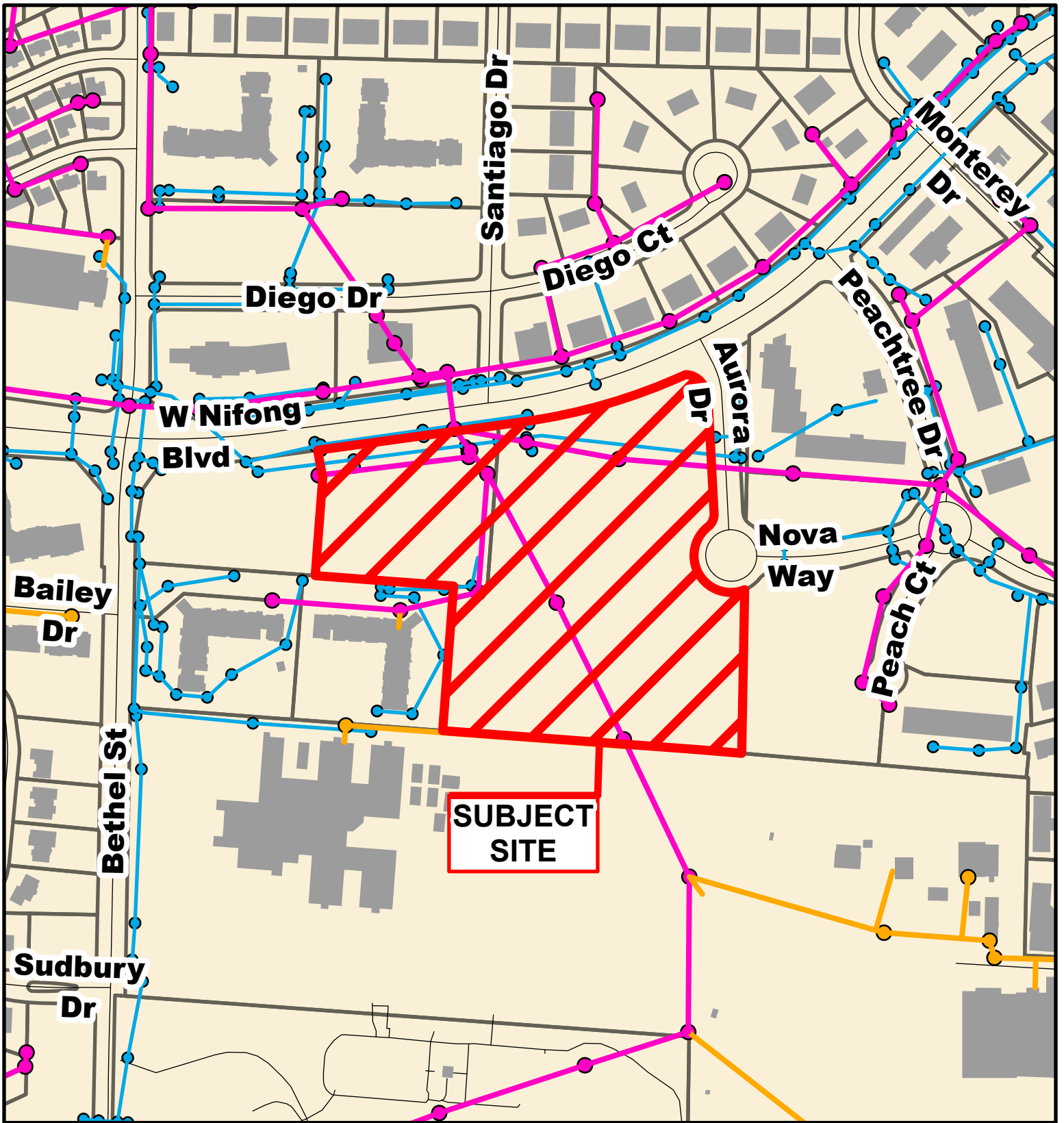


## Case # 187-2024 - Gentry Estates Lots 2 & 3 Final Plat



- 10 Foot Contour Lines
- 2 Foot Contour Lines
- Parcels





## Case # 187-2024 - Gentry Estates Lots 2 & 3 Final Plat



- City Sanitary Line
- City Storm Lines
- Private Sanitary Line
- Parcels

