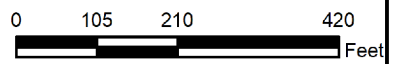


Source: Nearmap. <https://www.nearmap.com/us/en>

Case # 115-2022 - Bluff Creek Plat No. 10

Final Plat and Design Adjustments

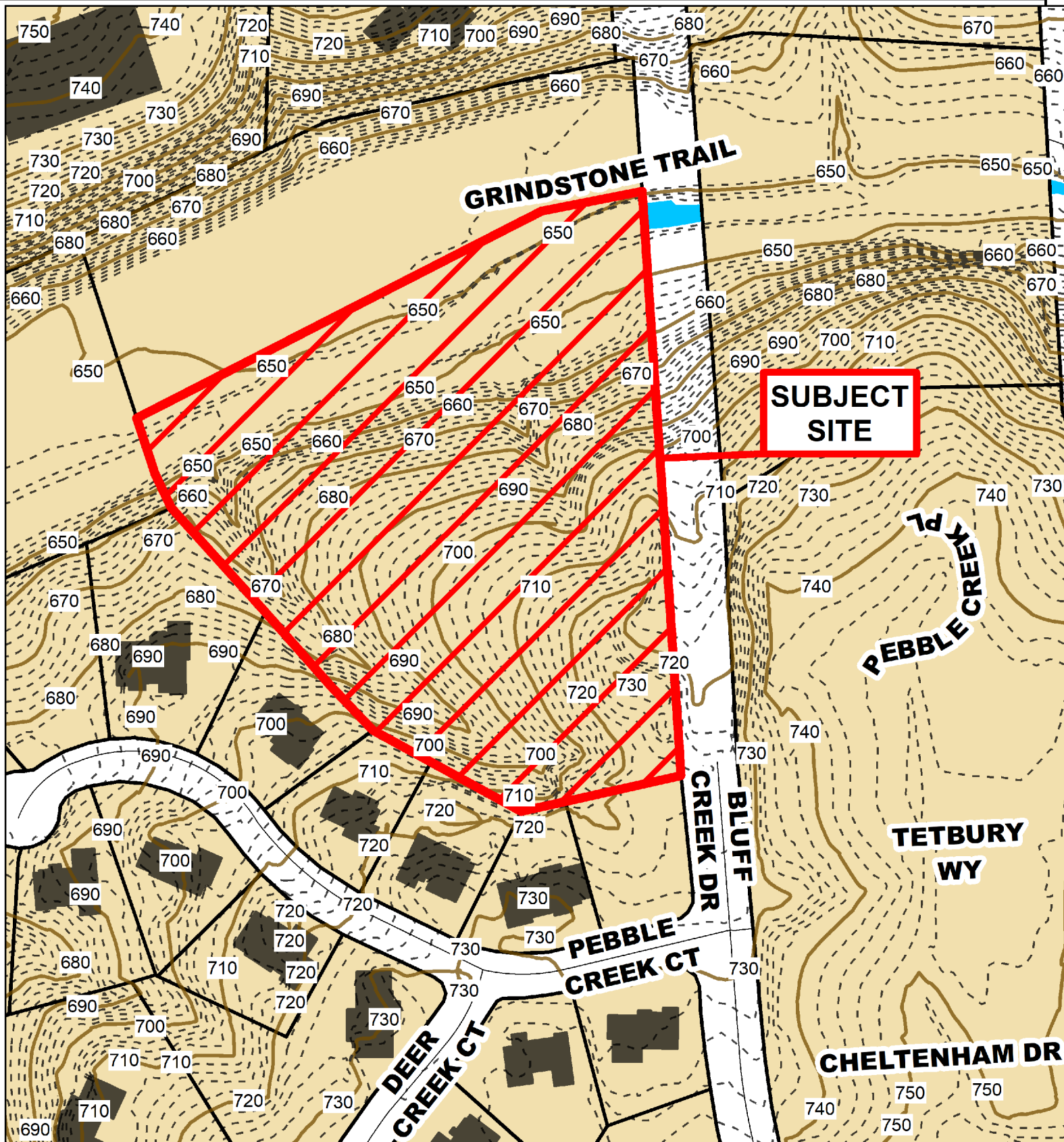
 Parcels



1 inch = 250 feet

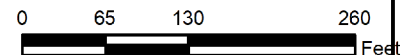
2021 NearMap Aerial Photo
Parcel Data Source: Boone County Assessor

Created by The City of Columbia - Community Development Department



Case # 115-2022 - Bluff Creek Plat No. 10 Final Plat

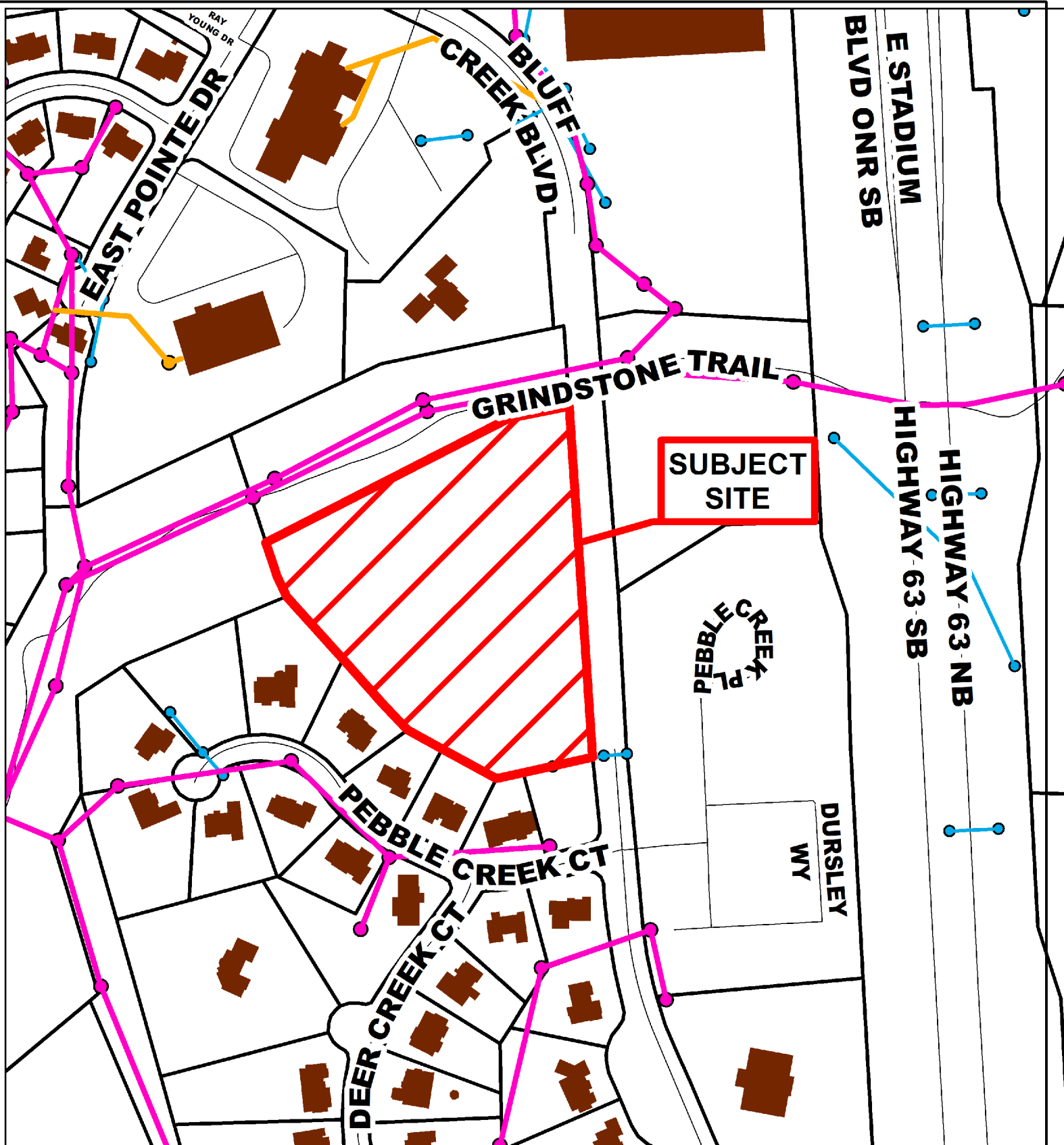
- 10 Foot Contour Lines
- 2 Foot Contour Lines
- Parcels



Parcel Data Source: Boone County Assessor

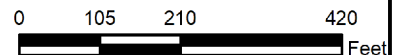
Created by The City of Columbia - Community Development Department

1 inch = 150 feet



**Case # 115-2022 - Bluff Creek Plat No. 10
Final Plat**

- City Sanitary Line
- City Storm Lines
- Private Sanitary Line
- Parcels



1 inch = 250 feet