

Case # 95-2023 - SE Corner Veterans United & S. Providence

Preliminary



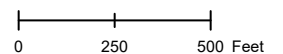
- Columbia City Limits
- City Zoning
- City Property
- Parcels

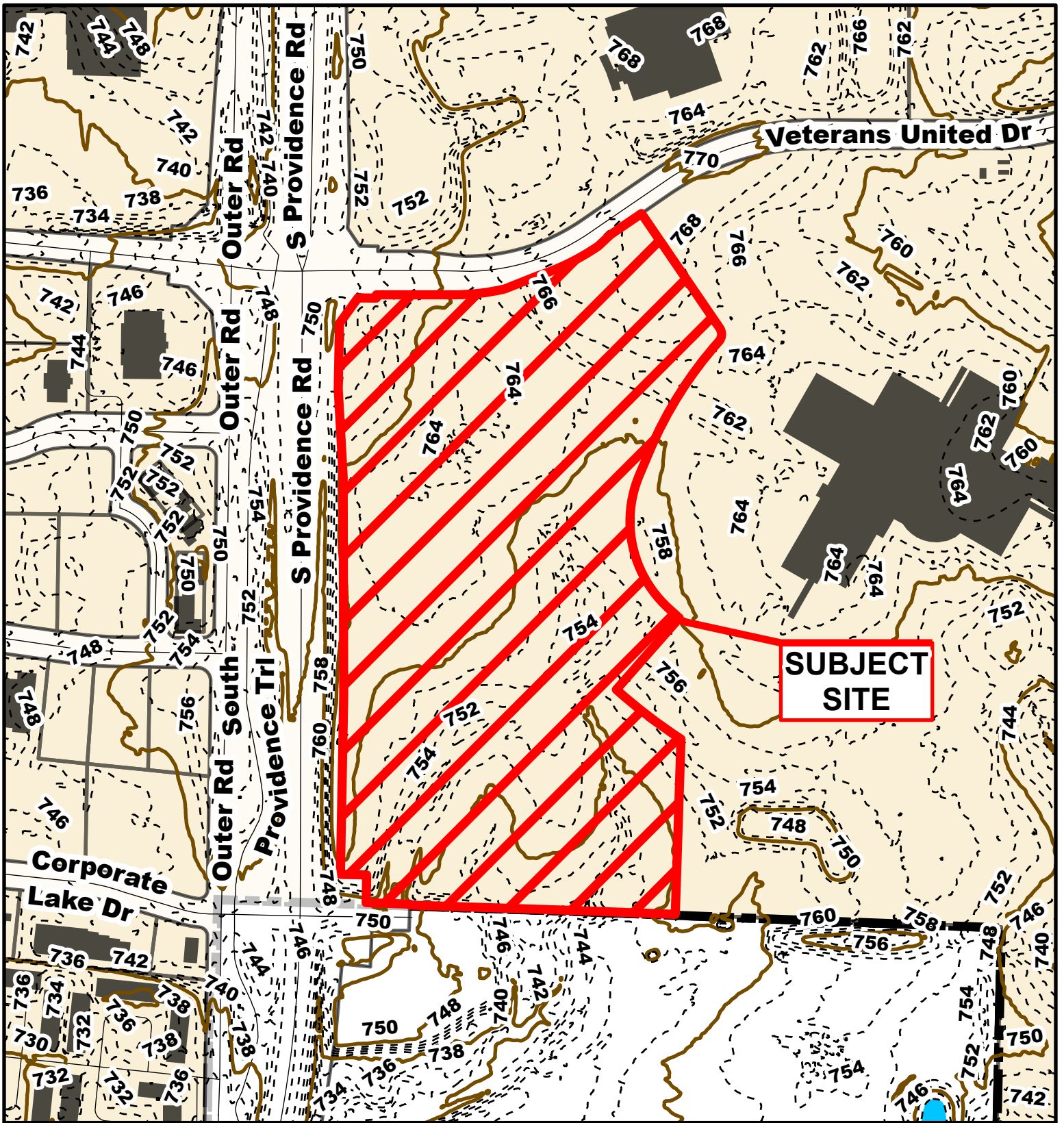


Parcel Data Source: Boone County Assessor

Created by The City of Columbia - Community Development Department

2022 Imagery: NearMap



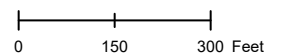


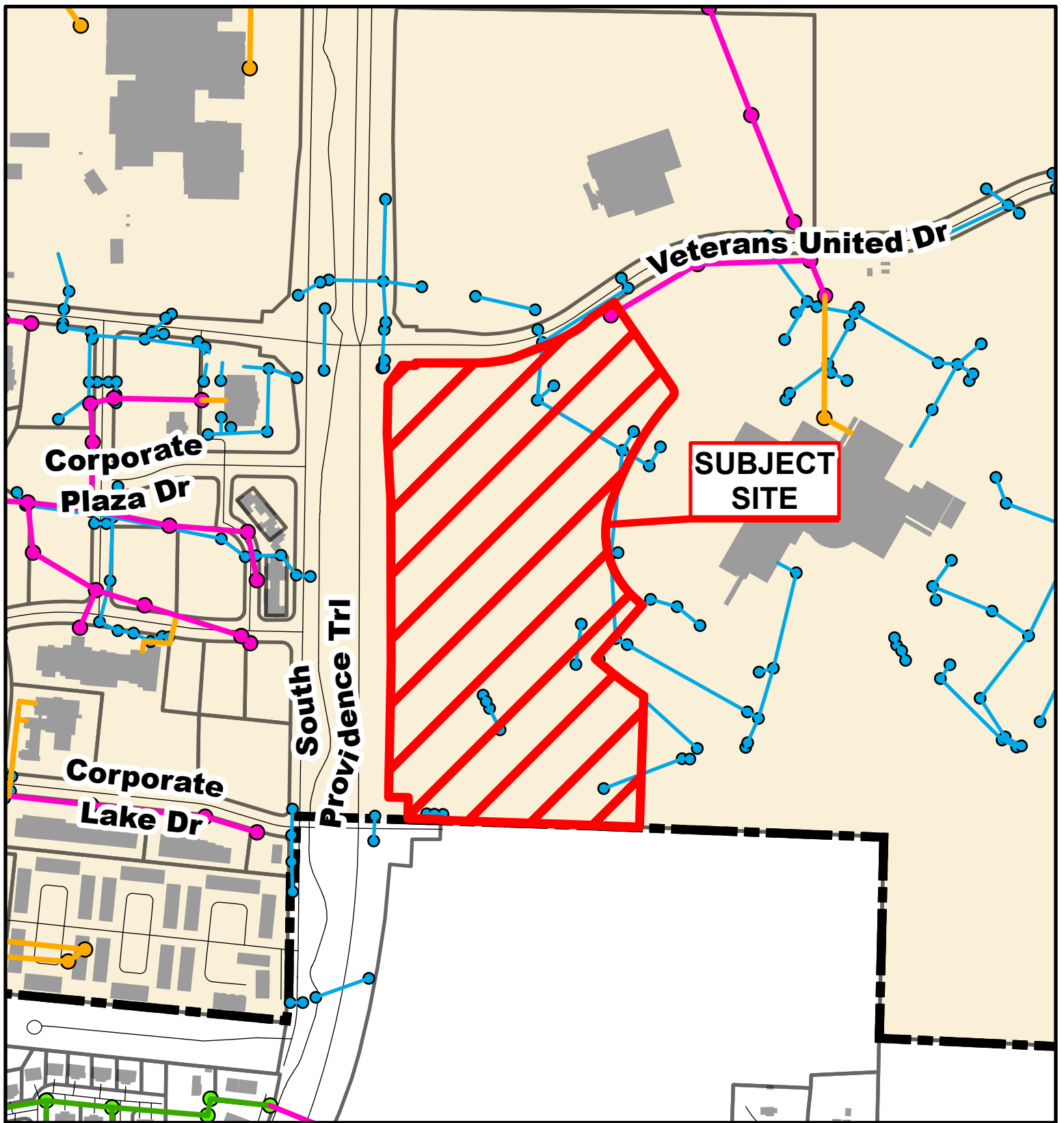
Case # 95-2023 - SE Corner Veterans United & S. Providence

Preliminary



- 10 Foot Contour Lines
- 2 Foot Contour Lines
- Parcels
- City of Columbia





Case # 95-2023 - SE Corner Veterans United & S. Providence
Preliminary



- City Sanitary Line
- City Storm Lines
- BCRSD Sanitary Line
- Parcels
- Private Sanitary Line
- Columbia City Limits

