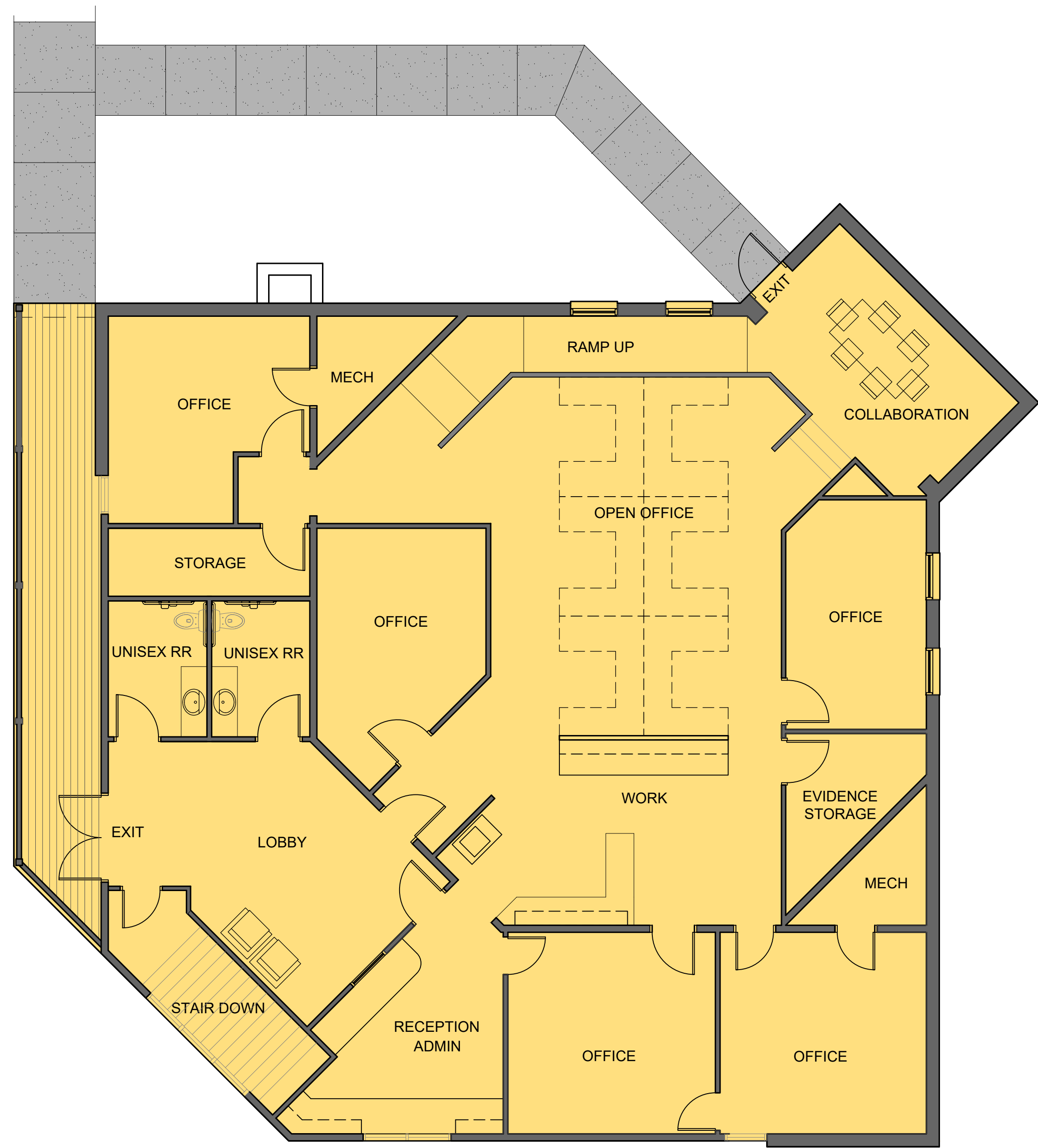


**City of Columbia Fire Department**  
**Conceptual Fire Marshal & Interim FS#11 Plans**

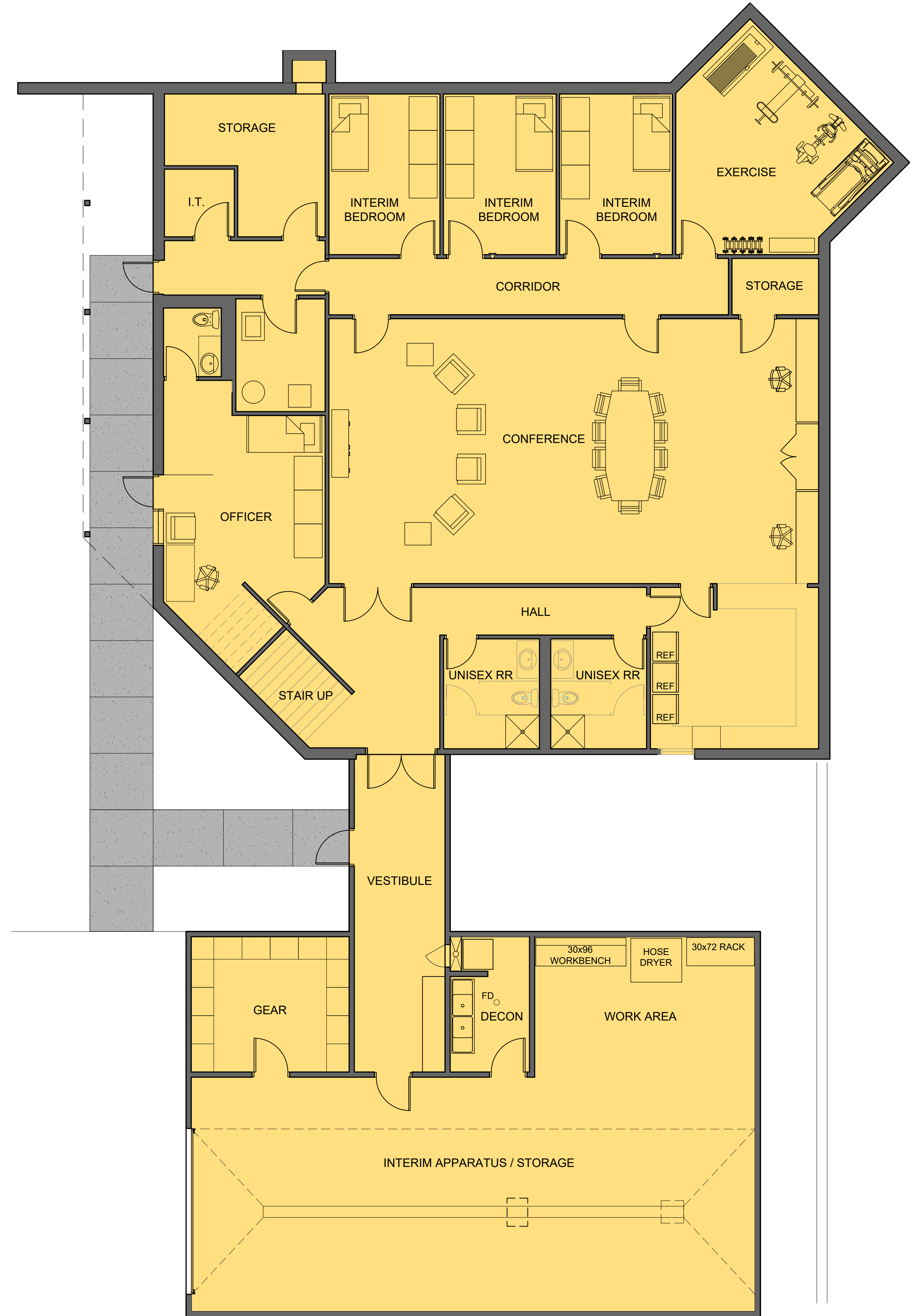
The city plans to renovate and modernize this 7,429 square foot building for the new offices for the Fire Marshals Division on the main level and an interim station on the lower level. In addition to the renovations, an 1,880 square foot addition will be provided for the interim firefighting apparatus vehicle and equipment.

The renovations and addition will provide economical, reliable, sustainable, and innovative organizational and infrastructure foundations for the efficient delivery of municipal services to meet the current and future needs of our residents and visitors.

- Renovations & additions that are resilient to anticipated future conditions.
- Use the highest recycled content materials and regionally source materials to the highest extent possible where possible.
- Reduce landfill waste by diverting construction and demolition waste.
- Development / replacement of entryways to accessible access to building.
- Replacement of vinyl siding and roof surface.
- Concrete slab on-grade construction with shallow foundations.
- Concrete paving.
- Wood framing with structural steel support & wood roof trusses
- Renovations & additions with highest feasible energy efficiency with on-site renewable energy HVAC & lighting systems and control installations that exceed code minimum requirements.
- Renovations & additions with air conditioning units to use refrigerants with low global warming potentials (e.g., carbon dioxide or ammonia instead of hydrofluorocarbons).
- Systems designed to manage energy demand to reduce peak energy use.
- Design facilities using water conservation fixtures, such as low-flow urinals toilets, showers and faucets where possible.



**A1** FIRE MARSHAL'S OFFICE - UPPER LEVEL FLOOR PLAN  
 NOT TO SCALE



**A2** INTERIM FIRE STATION - LOWER LEVEL FLOOR PLAN  
 NOT TO SCALE

No.	Date	By	Revision

**COLUMBIA FIRE DEPARTMENT**  
 1020 S. EL CHAPARRAL AVE.  
 INTERIM FIRE STATION # 10 FLOOR PLANS

City of Columbia, Missouri  
 Public Works

File No.	
Scale:	NO SCALE
Date:	03/11/2024
Des.	
Dwn.	
Chk.	