






Case # 78-2026 - 1801 Hanover Boulevard Rezoning

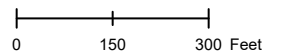


Parcel Data Source: Boone County Assessor
Created by The City of Columbia - Community Development Department

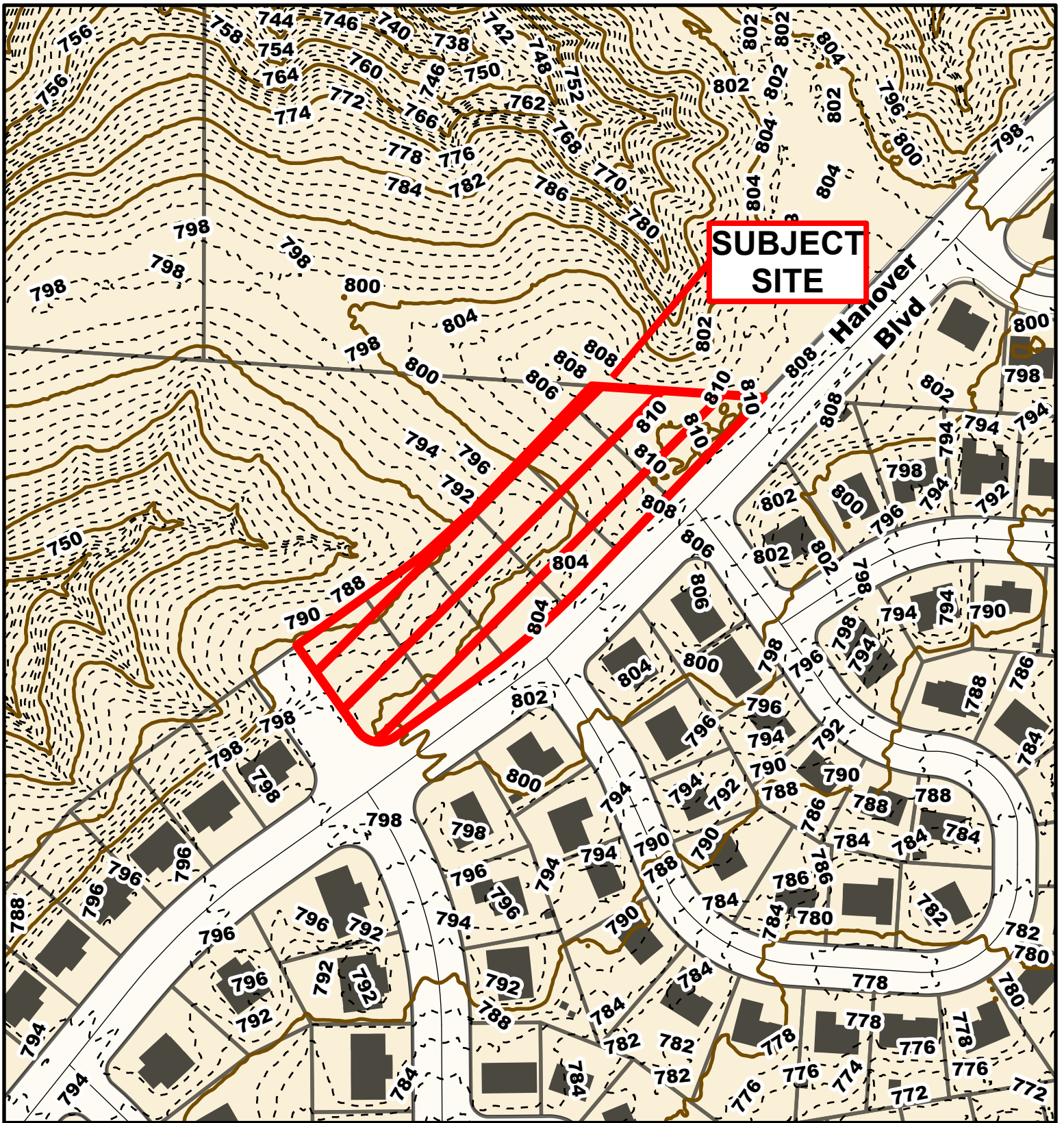
-  City Property
-  Parcels
-  City Zoning



2024 Imagery: NearMap



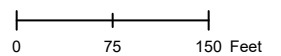
Source: Nearmap. <https://www.nearmap.com/us/en>

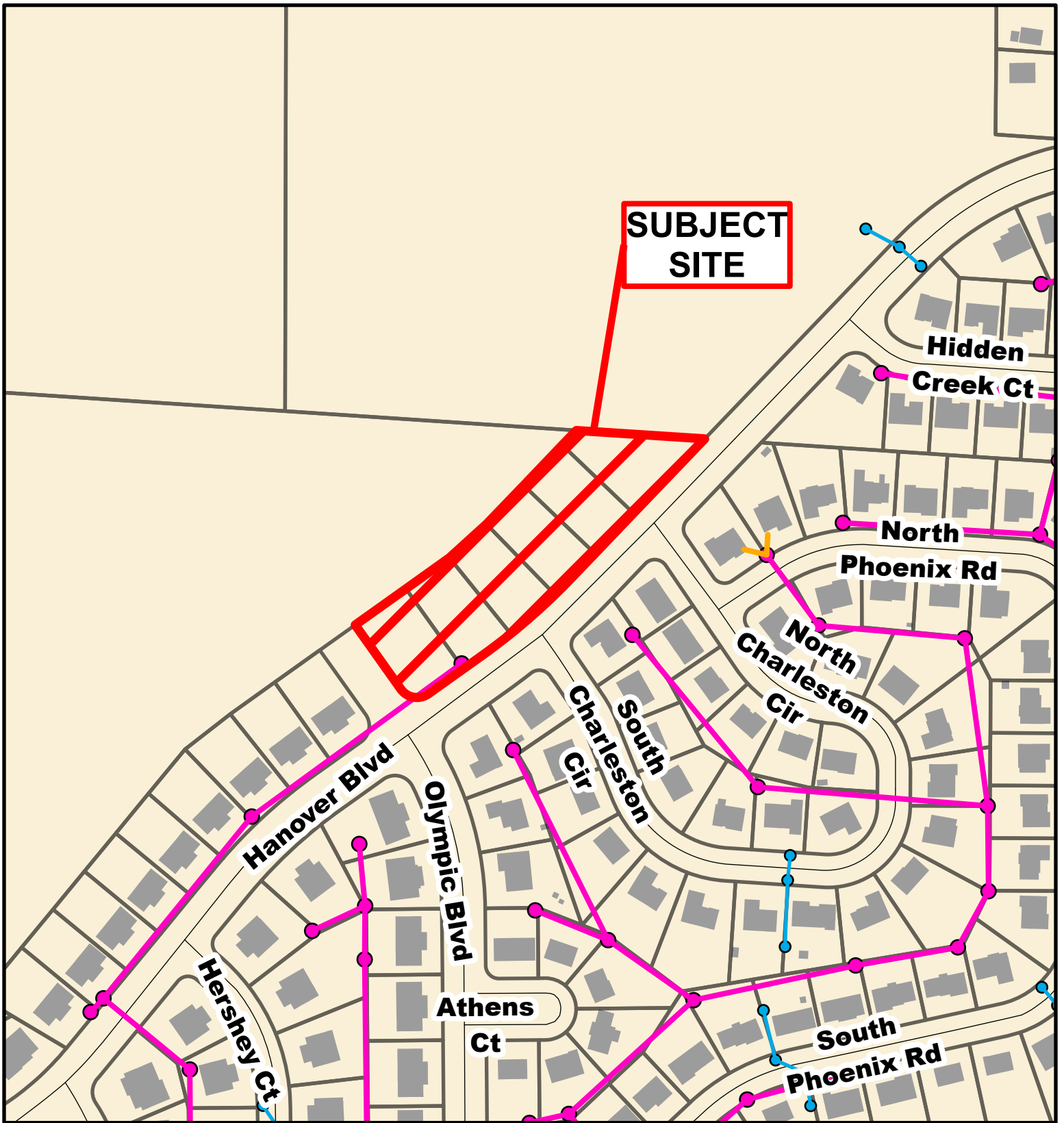


Case # 78-2026 - 1801 Hanover Boulevard Rezoning



- 10 Foot Contour Lines
- 2 Foot Contour Lines
- Parcels
- Columbia City Limit



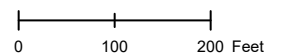


SUBJECT SITE

**Case # 78-2026 - 1801 Hanover Boulevard
Rezoning**



- City Sanitary Line
- City Storm Lines
- Private Sanitary Line
- Parcels
- Columbia City Limit



Case # 78-2026
1801 Hanover Blvd
Rezoning

