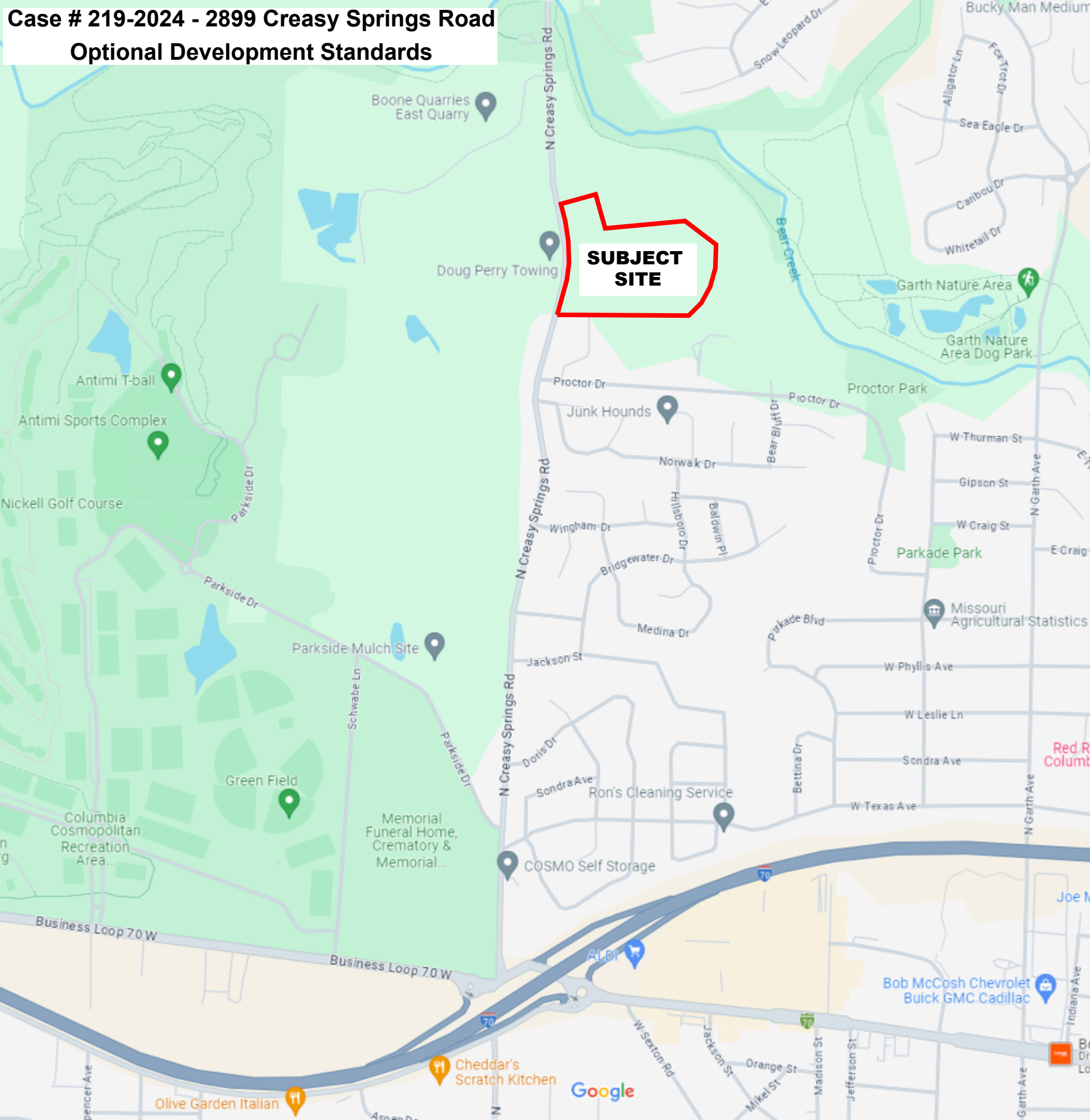
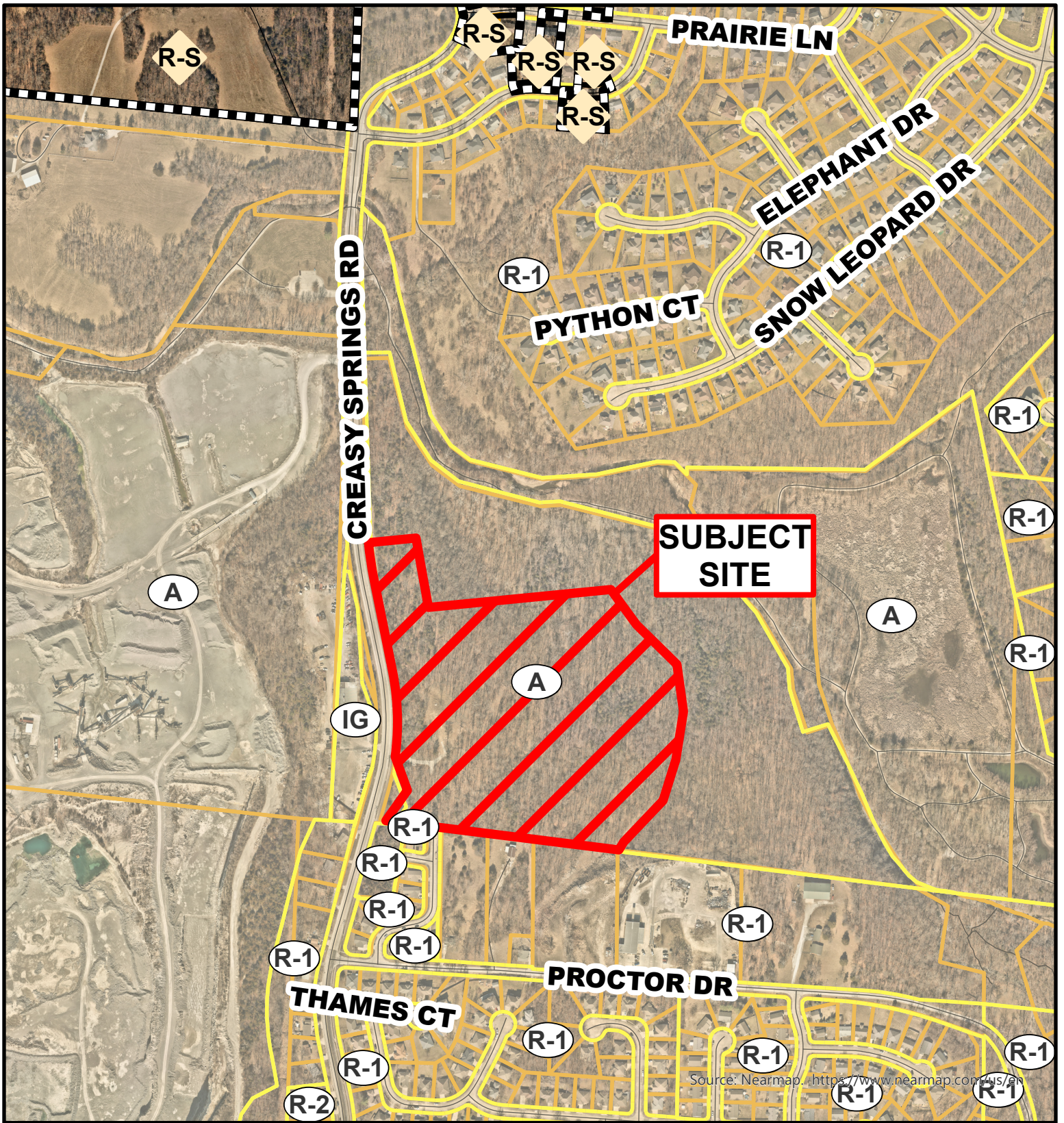


Case # 219-2024 - 2899 Creasy Springs Road
Optional Development Standards



SUBJECT SITE



Case # 219-2024 - 2899 Creasy Springs Road

Optional Development Standards



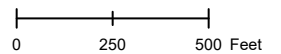
- Columbia City Limit
- City Property
- City Zoning
- Parcels

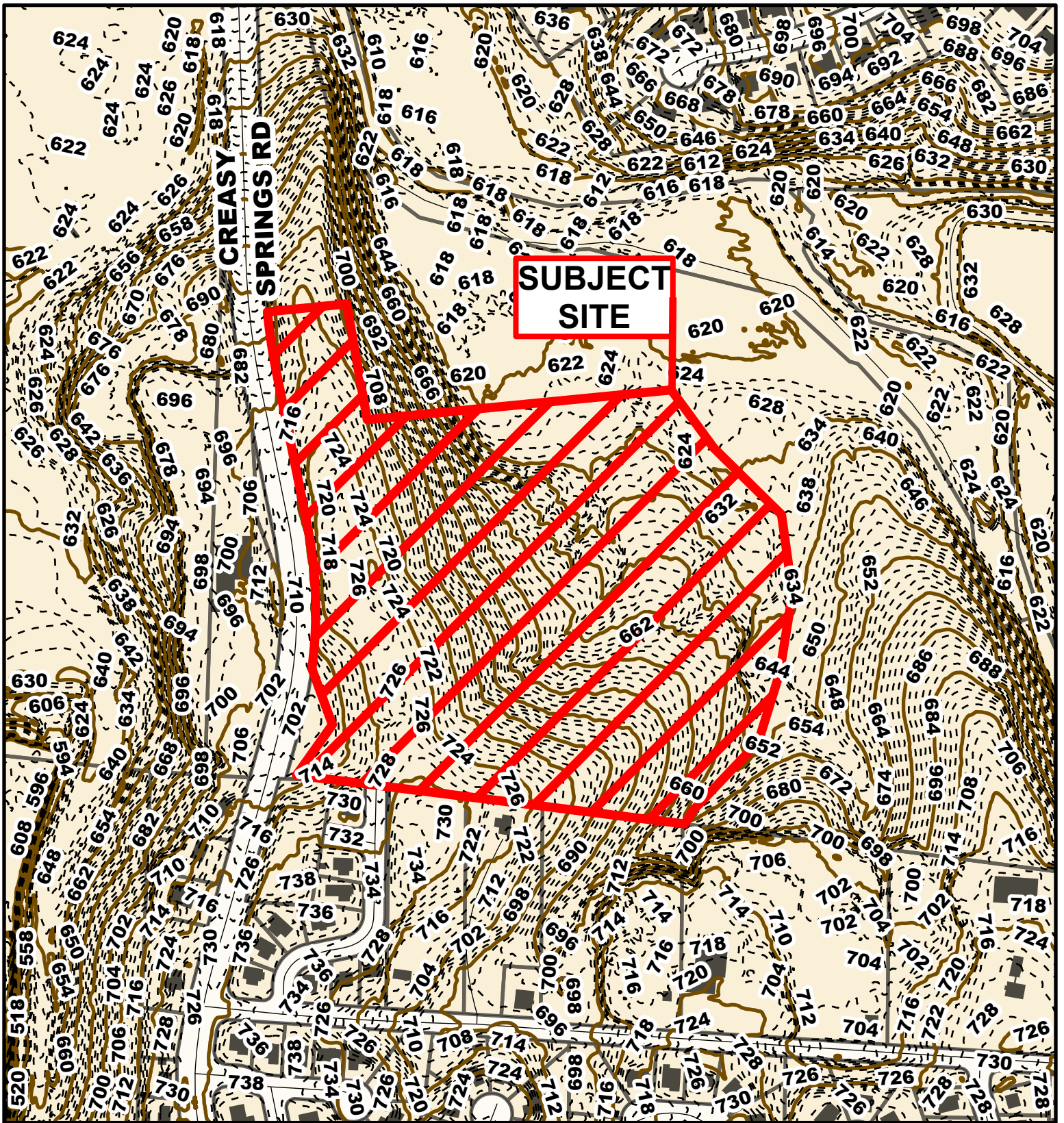


Parcel Data Source: Boone County Assessor

Created by The City of Columbia - Community Development Department

2024 Imagery: NearMap



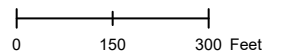


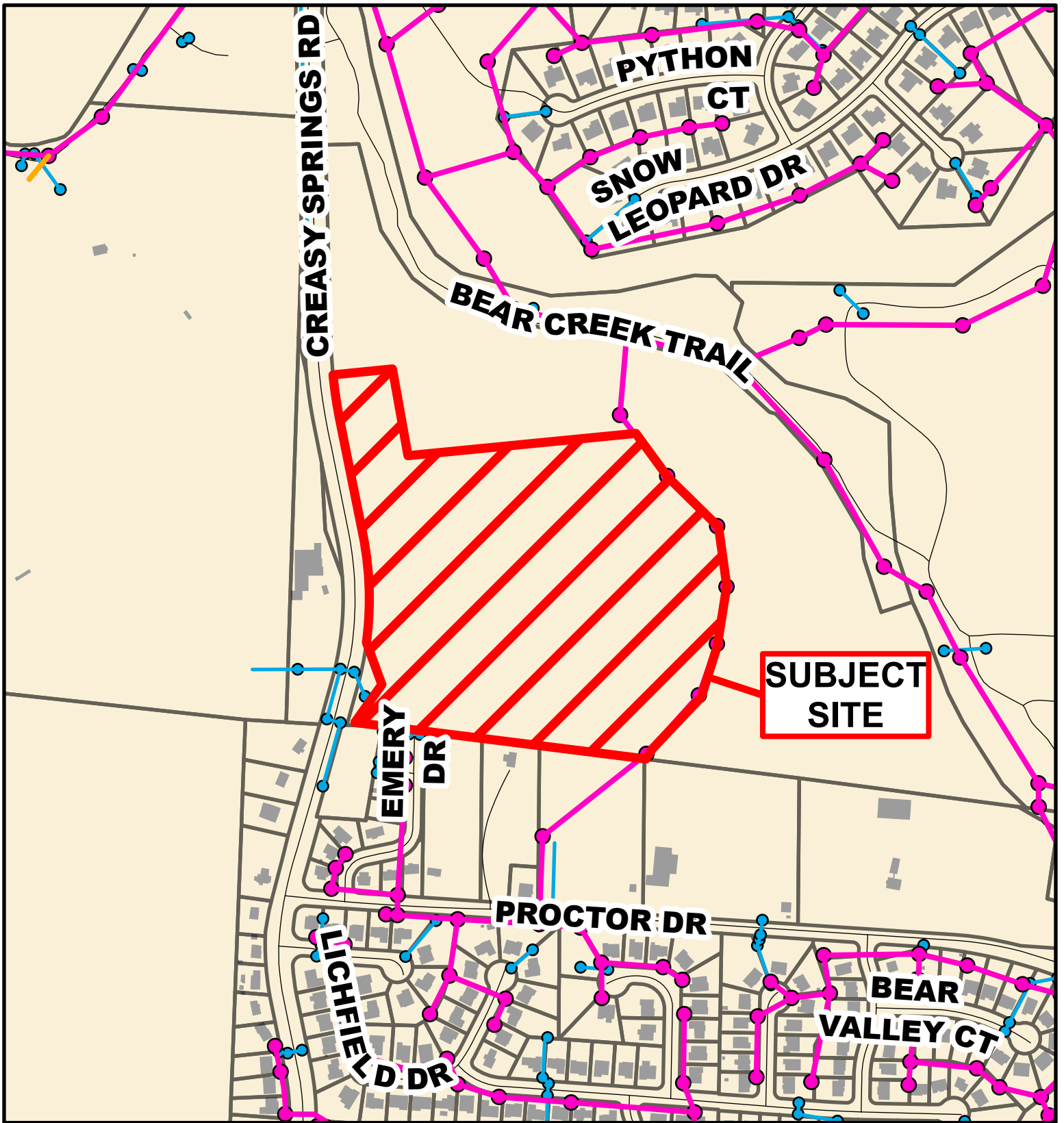
Case # 219-2024 - 2899 Creasy Springs Road

Optional Development Standards



- 10 Foot Contour Lines
- 2 Foot Contour Lines
- City of Columbia
- Parcels





Case # 219-2024 - 2899 Creasy Springs Road

b



- City Sanitary Line
- City Storm Lines
- Private Sanitary Line
- Parcels
- Columbia City Limit

