

Source: Nearmap, <https://www.nearmap.com/us/en>

Case # 140-2024 - 5301 St. Charles Road Rezoning



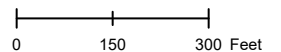
- Columbia City Limit
- City Zoning
- City Property
- Parcels

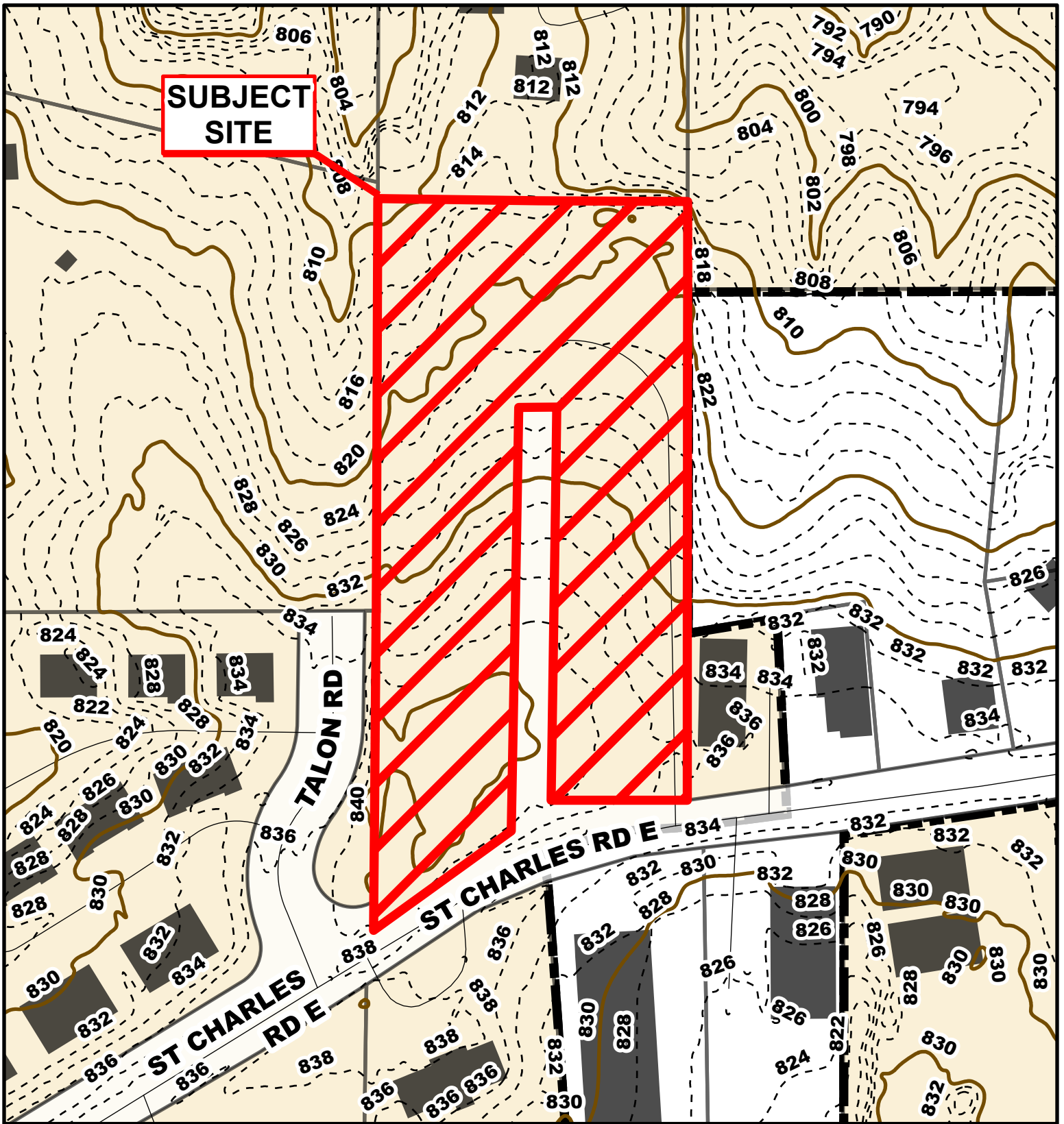


Parcel Data Source: Boone County Assessor

Created by The City of Columbia - Community Development Department





2022 Imagery: NearMap

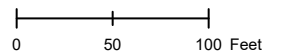


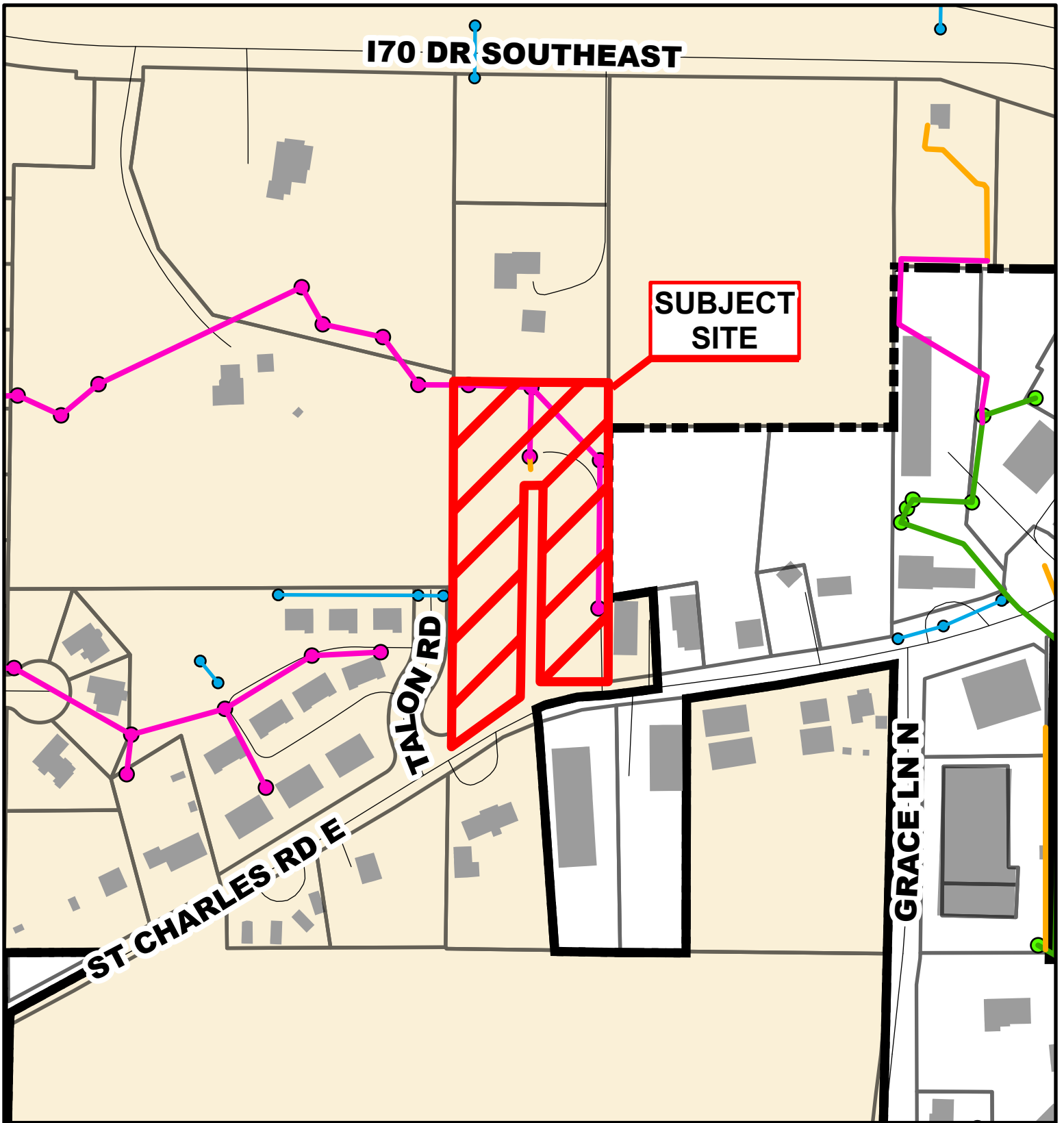


Case # 140-2024 - 5301 St. Charles Road Rezoning



-  10 Foot Contour Lines
-  2 Foot Contour Lines
-  City of Columbia
-  Parcels





Case # 140-2024 - 5301 St. Charles Road

Rezoning



- City Sanitary Line
- BCRSD Sanitary Line
- Private Sanitary Line
- City Storm Lines
- Parcels
- Columbia City Limit

