

## Case # 247-2023 - 3705 Gibbs Road

### Permanent Zoning



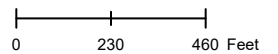
- Columbia City Limit
- City Zoning
- City Property
- Parcels

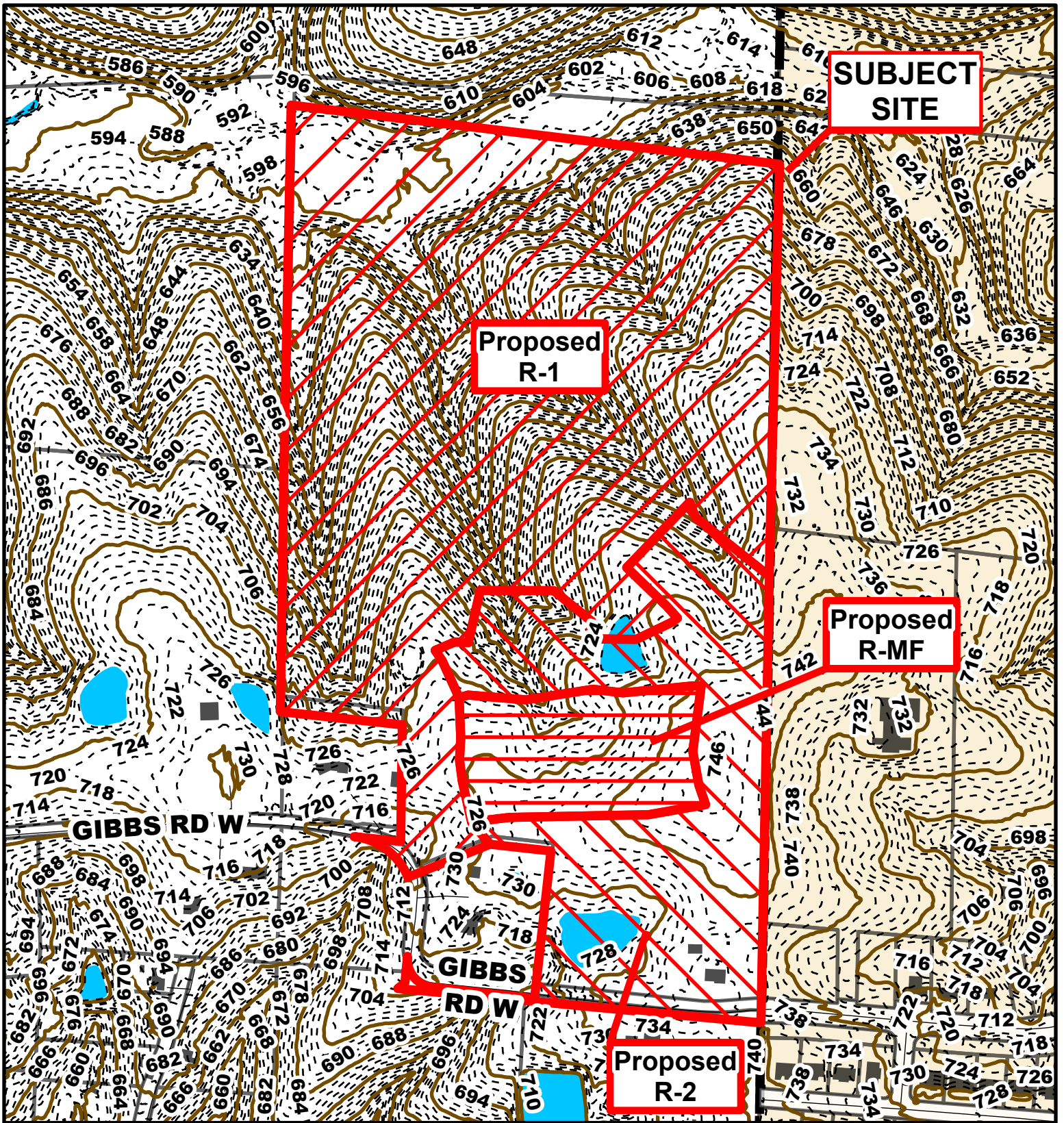


Parcel Data Source: Boone County Assessor

Created by The City of Columbia - Community Development Department

2022 Imagery: NearMap





## Case # 247-2023 - 3705 Gibbs Road Permanent Zoning

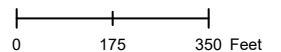


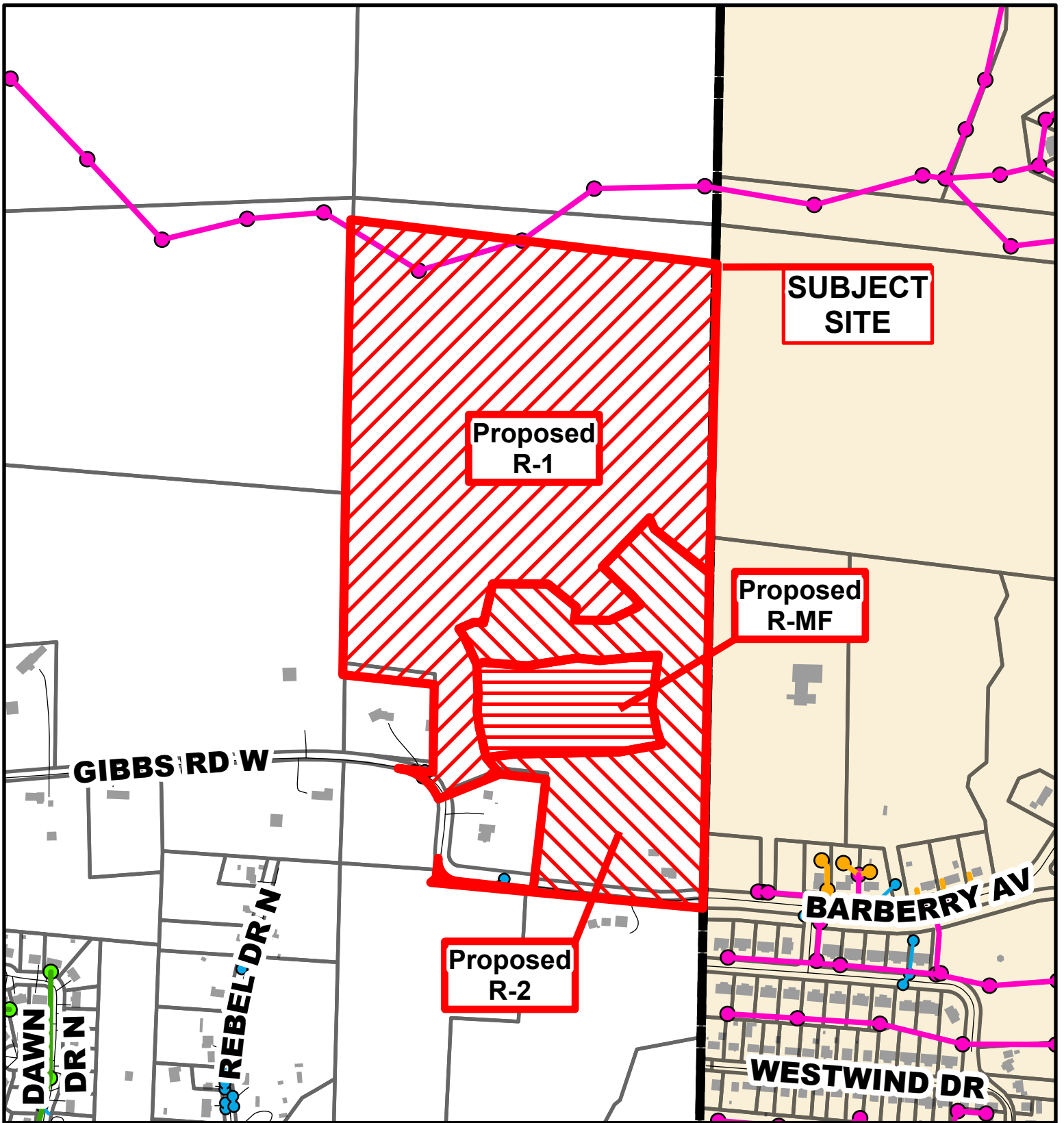
- 10 Foot Contour Lines
- 2 Foot Contour Lines
- City of Columbia
- Parcels



Parcel Data Source: Boone County Assessor

Created by The City of Columbia - Community Development Department





## Case # 247-2023 - 3705 Gibbs Road

### Permanent Zoning



- City Sanitary Line
- BCRSD Sanitary Line
- Private Sanitary Line
- City Storm Lines
- Parcels
- Columbia City Limits

