

Case # 192-2024 - 600 S Greenwood Ave Final Plat



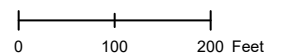
City Zoning
 Parcels

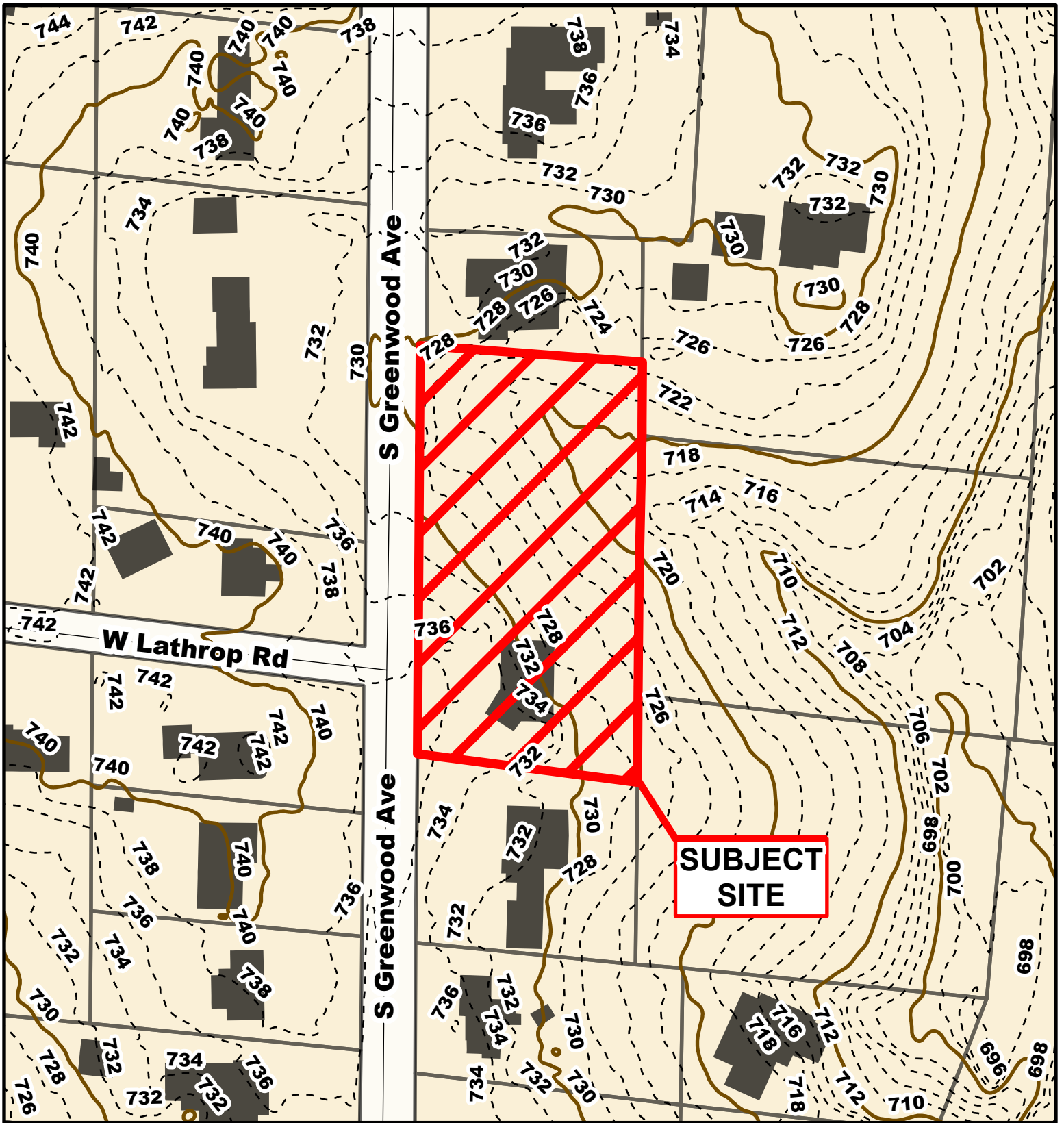


Parcel Data Source: Boone County Assessor

Created by The City of Columbia - Community Development Department

2022 Imagery: NearMap



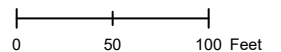


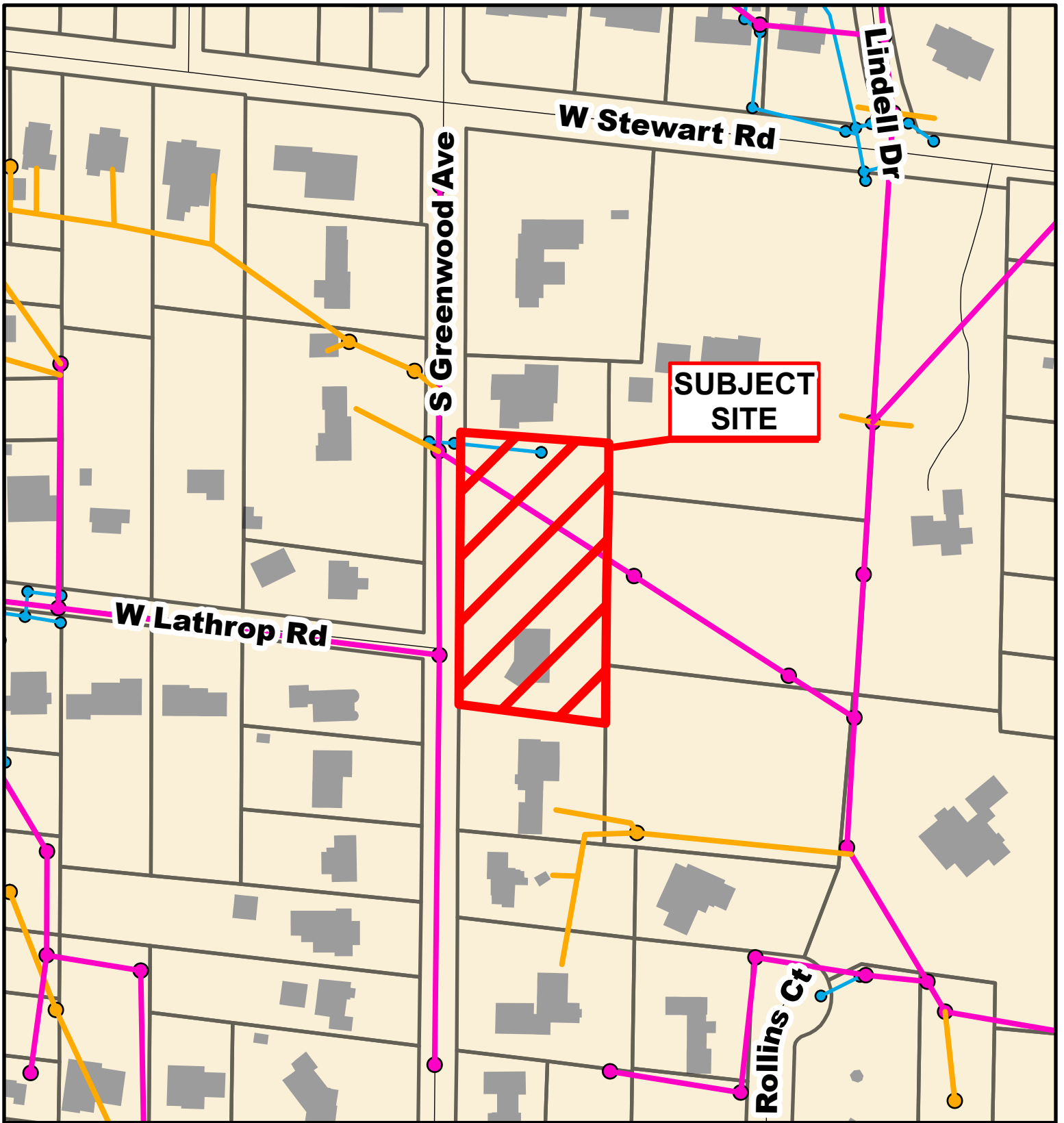
Case # 192-2024 - 600 S Greenwood Ave

Final Plat



- 10 Foot Contour Lines
- 2 Foot Contour Lines
- Parcels





Case # 192-2024 - 600 S Greenwood Ave
Final Plat



- City Sanitary Line
- City Storm Lines
- Private Sanitary Line
- Parcels

