

Case # 81-2024 - 4190 W. Vawter School Road

Final Plat



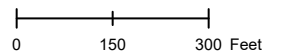
- Columbia City Limit
- City Property
- City Zoning
- Parcels

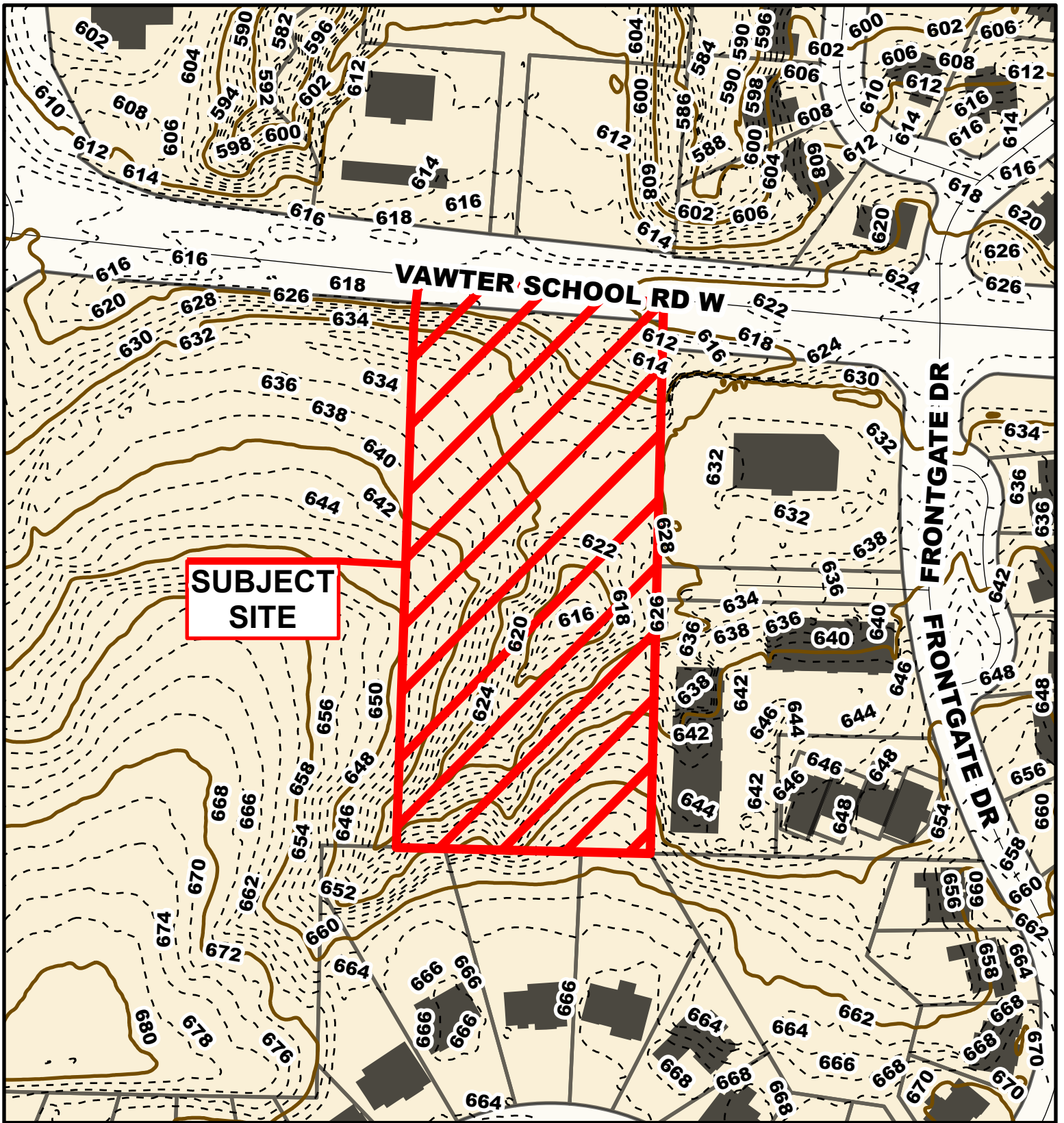


Parcel Data Source: Boone County Assessor

Created by The City of Columbia - Community Development Department

2022 Imagery: NearMap



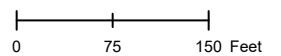


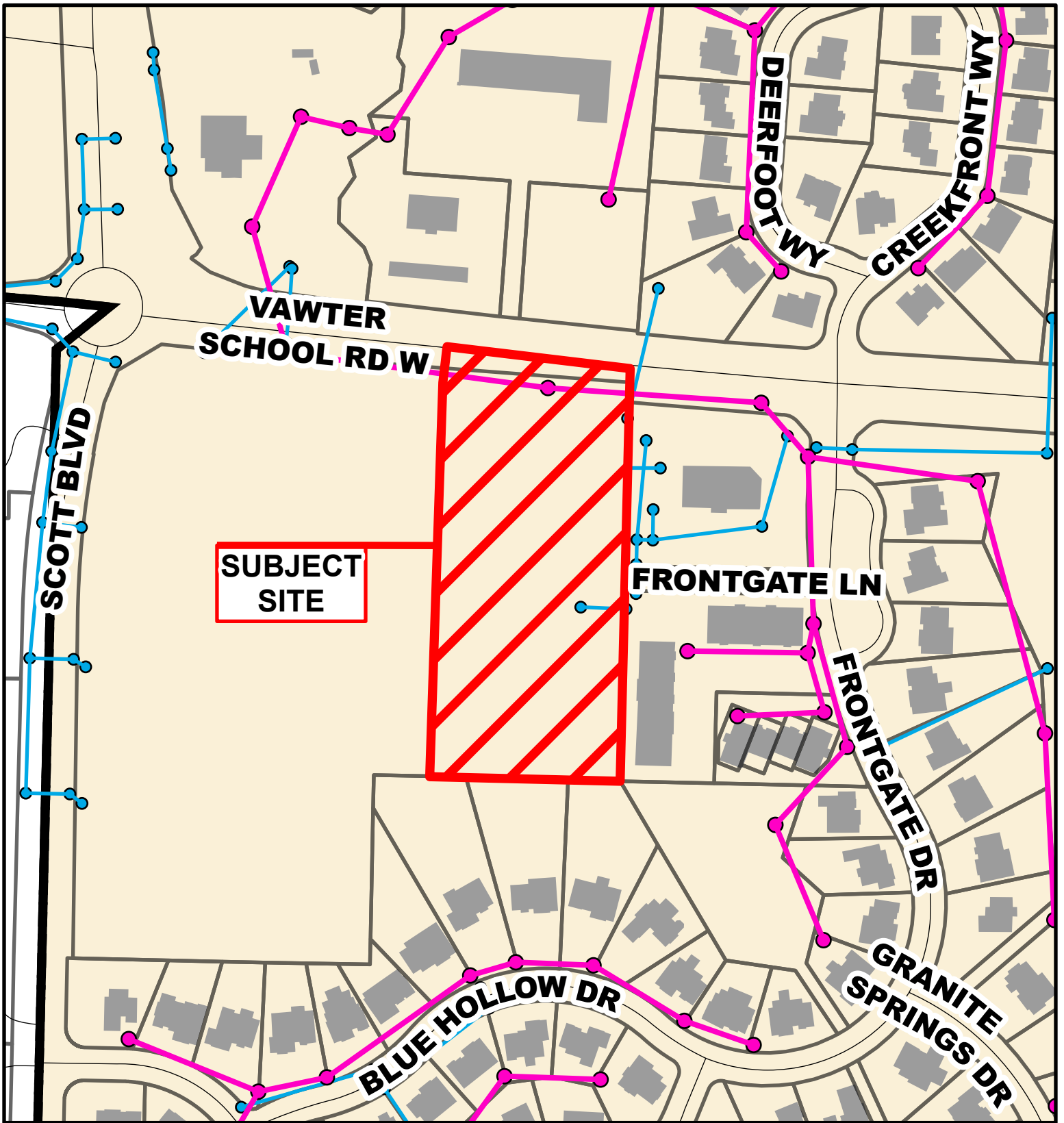
Case # 81-2024 - 4190 W. Vawter School Road

Final Plat



- 10 Foot Contour Lines
- 2 Foot Contour Lines
- City of Columbia
- Parcels





Case # 81-2024 - 4190 W. Vawter School Road

Final Plat



— City Sanitary Line

— City Storm Lines

▭ Parcels

▭ Columbia City Limits

N



Parcel Data Source: Boone County Assessor

Created by The City of Columbia - Community Development Department

