

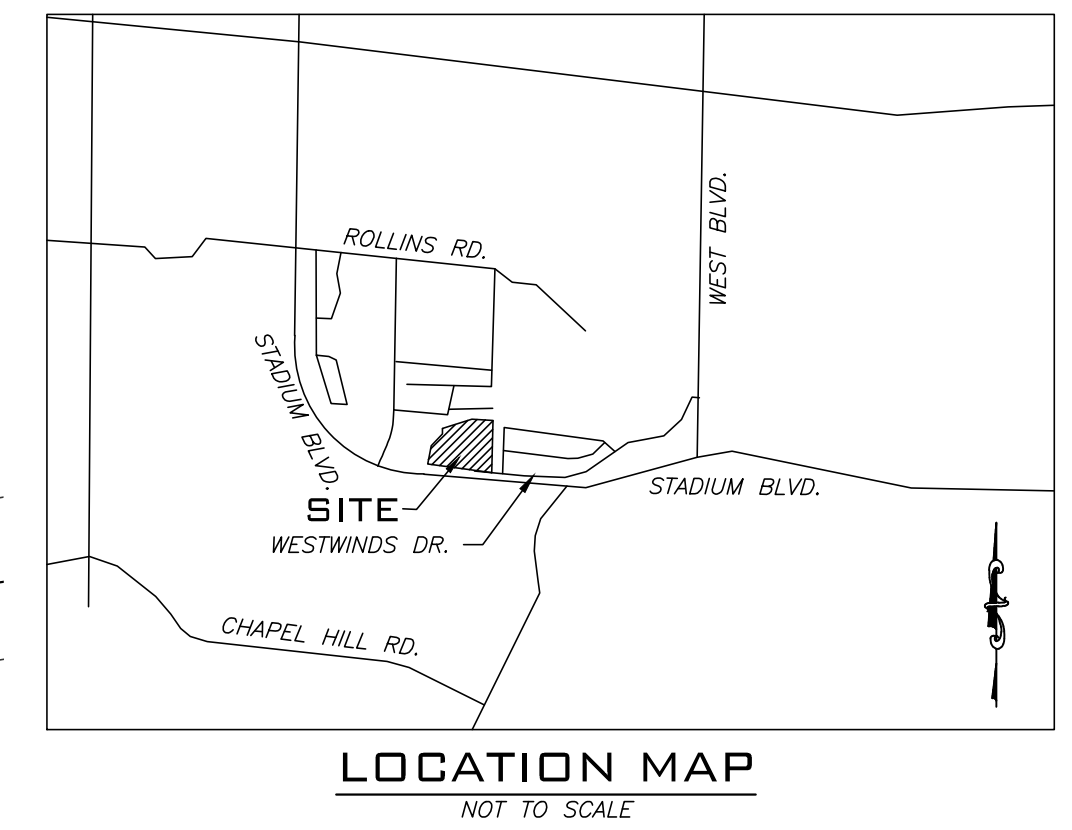
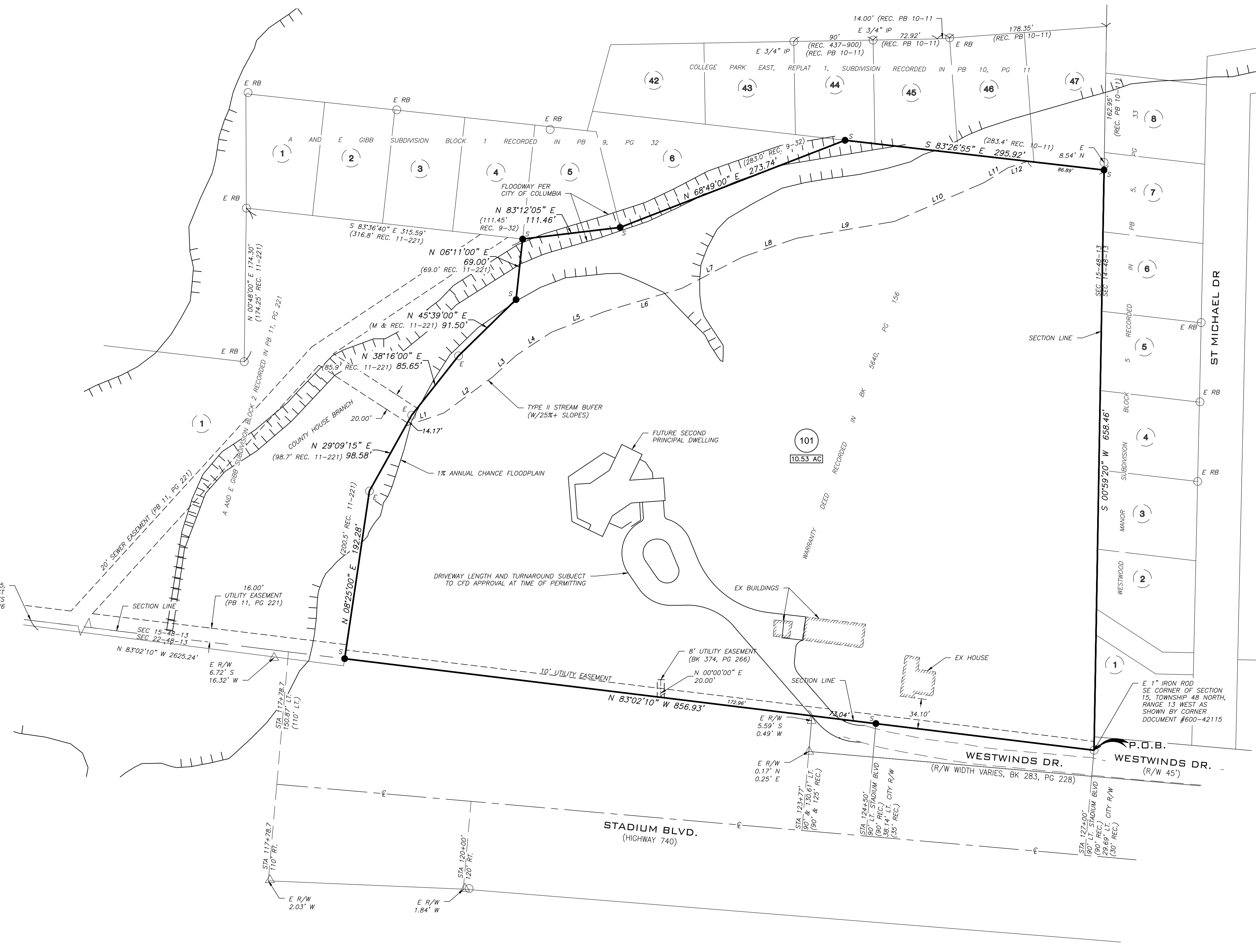
FILED FOR RECORD, BOONE COUNTY MISSOURI
BOB NOLTE, RECORDER OF DEEDS

EXHIBIT HIDDEN HAVEN PLAT 1

LEGEND

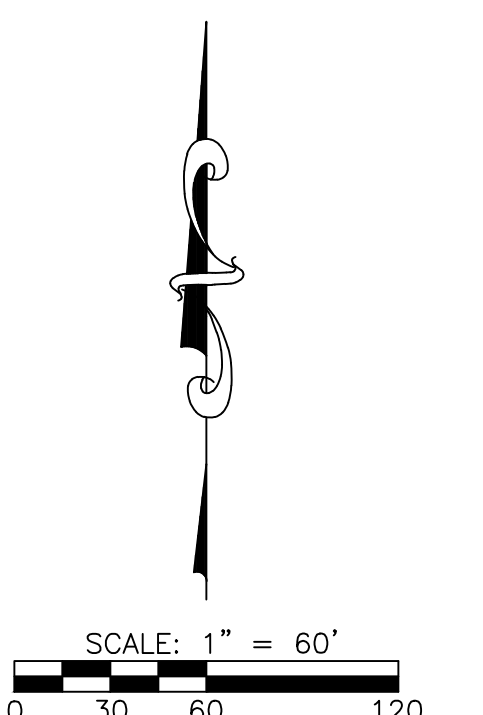
- 1/2" IRON PIPE W/ CAP #2001006115
(SET UNLESS NOTED OTHERWISE)
- E EXISTING
- S SET
- (M) MEASURED
- (REC) RECORD
- IRON PIPE (1/2" UNLESS NOTED OTHERWISE)
- REBAR (1/2" UNLESS NOTED OTHERWISE)
- PM PERMANENT MONUMENT
- 0.00 ACRES
- CL CENTERLINE
- R/W RIGHT-OF-WAY
- PB PLAT BOOK
- BK BOOK
- PG PAGE
- ESMT EASEMENT
- P.O.B. POINT OF BEGINNING
- P.O.C. POINT OF COMMENCEMENT

LINE #	DIRECTION	LENGTH
L1	N71°09'00"E	45.86'
L2	N53°30'55"E	68.94'
L3	N47°30'55"E	36.36'
L4	N56°45'45"E	47.88'
L5	N68°46'35"E	64.47'
L6	N73°18'20"E	91.47'
L7	N62°39'45"E	77.59'
L8	N70°57'45"E	65.77'
L9	N80°16'25"E	112.10'
L10	N66°34'25"E	110.41'
L11	N58°18'10"E	32.26'
L12	N71°59'50"E	23.81'



SOUTH QUARTER CORNER OF SECTION 15,
TOWNSHIP 48 NORTH, RANGE 13 WEST
CALCULATED FROM LAKE SHORE ESTATES
SUBDIVISION RECORDED IN PLAT BOOK 7, PAGE 26

E 1" IRON ROD
SE CORNER OF SECTION
15, TOWNSHIP 48 NORTH,
RANGE 13 WEST AS
SHOWN BY CORNER
DOCUMENT #600-42115



BEARINGS ARE REFERENCED TO GRID NORTH OF
THE MISSOURI STATE PLANE COORDINATE
SYSTEM NAD83(2011), EPOCH DATE 2010.00,
CENTRAL ZONE, BY GPS OBSERVATIONS, USING
MODOT VRS NETWORK

X:\Project\HWNK - KYLE HENDERSON\1607 WESTWINDS DRAWINGS\HWNK3-02 New & Old Houses.dwg FP-2022-08-29