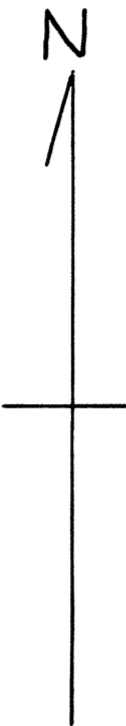


EAST BROADWAY



BASS AVE

ANN STREET

MOSS AVE

GENTRY'S REVISION
of
FYFER
SUBDIVISION
of
COLUMBIA, MISSOURI

LOTS 6 to 10 INCLUSIVE, BLOCK 2
LOTS 6 to 14 INCLUSIVE, BLOCK 4

SURVEYED - JULY 21 1949

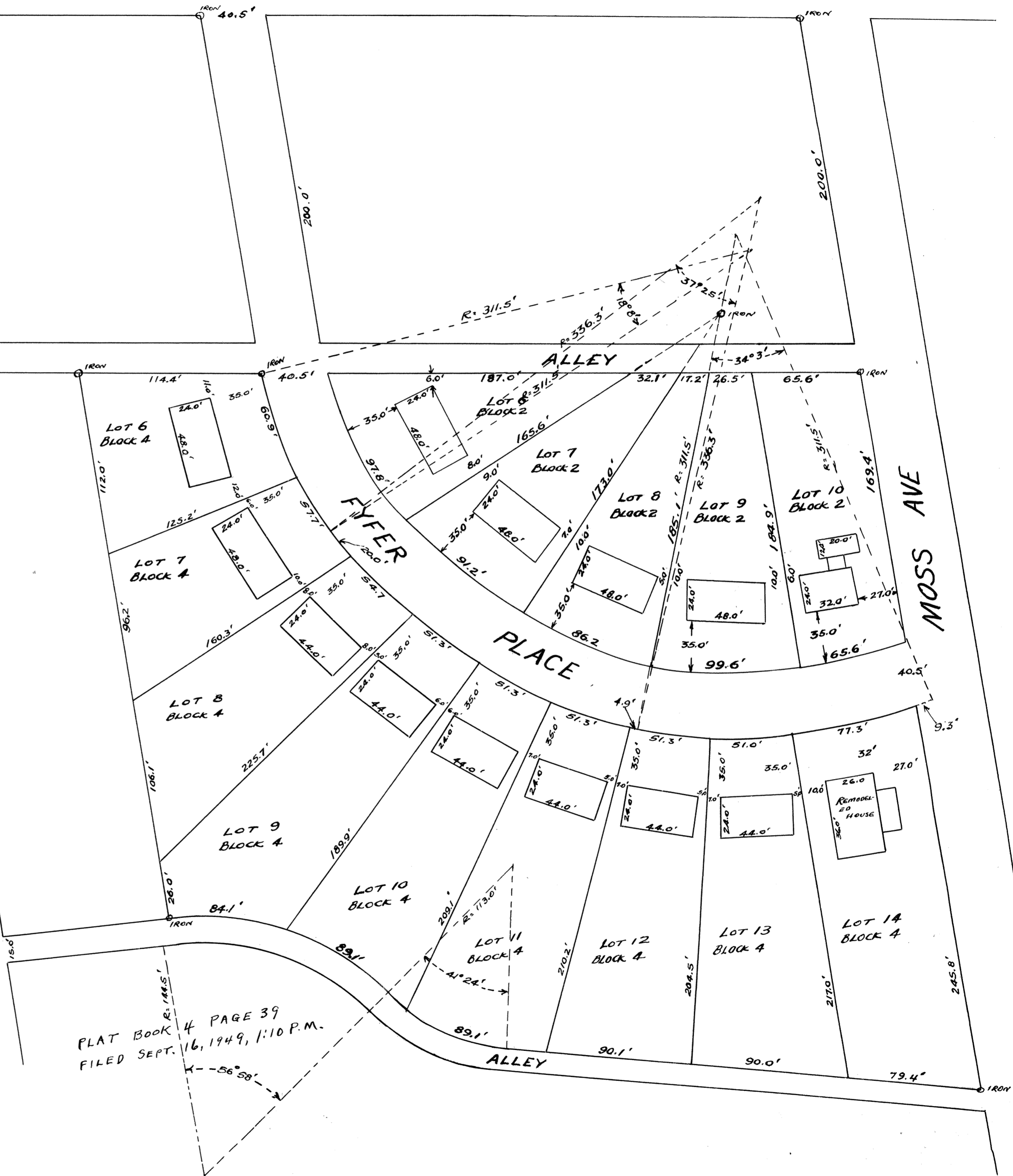
BY
SCALE 1" = 50'
R. Gentry
E-625

THIS PLAT OF A PORTION OF FYFER
SUBDIVISION AS DELINEATED ABOVE SHOWS
LOT DIMENSION CHANGES NECESSITATED
BY AN ERROR IN THE LENGTH OF FYFER
PLACE ON ORIGINAL PLAT.

SUBSCRIBED AND SWORN TO BEFORE
ME THIS 16TH DAY OF SEPTEMBER 1949.

Samuel D. Gentry
NOTARY PUBLIC

MY COMMISSION EXPIRES MAY 16, 1953



PLAT BOOK 4 PAGE 39
FILED SEPT. 16, 1949, 1:10 P.M.

State of Missouri
County of Boone
Sept 16 1949
at 10 o'clock A.M.
Recorded in Book No. 4 Page 39
Attest:
[Signature]
Recorder

**GENTRY'S REVISION
OF A PART OF
FYFER'S SUBDIVISION of FYFER'S ADDITION**

DEDICATION of PLATT

KNOW ALL MEN BY THESE PRESENTS THAT WE, R. SHELDON GENTRY AND EDITH VIRGINIA GENTRY, HUSBAND AND WIFE, OF BOONE COUNTY, MISSOURI, BEING THE OWNERS IN FEE SIMPLE OF THE LOTS DESCRIBED AS FOLLOWS, TO WIT:

LOTS SIX (6), SEVEN (7), EIGHT (8), AND NINE (9) EXCEPT THE WEST THIRTY-THREE (33) FEET OF SAID LOTS AND LOTS TEN (10), ELEVEN (11), TWELVE (12), THIRTEEN (13), AND FOURTEEN (14), ALL IN BLOCK FOUR (4); ALSO LOTS SIX (6), SEVEN (7), EIGHT (8), NINE (9), AND (10), ALL IN BLOCK TWO (2), ALL IN FYFER'S SUBDIVISION OF FYFER'S ADDITION TO THE CITY OF COLUMBIA, BOONE COUNTY, MISSOURI.

AND WHEREAS, WE, THE UNDERSIGNED, ARE DESIROUS OF REPLATTING SAID LOTS AND CHANGING THEIR DIMENSIONS, WE HAVE CAUSED SAID ABOVE DESCRIBED LOTS TO BE SURVEYED AND REPLATTED WITH SUCH REVISIONS AS APPEAR UPON THE ACCOMPANYING PLATT AND TO BE FOREVER KNOWN AS GENTRY'S REVISION OF A PART OF FYFER'S SUBDIVISION OF FYFER'S ADDITION.

THE DIMENSIONS OF LOTS TOGETHER WITH THE DIMENSIONS OF BLOCKS, STREETS, AND ALLEYS ARE AS INDICATED ON THE PLATT AS WELL AS COURSES AND DISTANCES.

NO DWELLING IN THIS AREA SHALL CONTAIN LESS THAN 768 SQ. FT. FLOOR SPACE LESS GARAGE, PORCHES, AND BASEMENT.

BUILDING LOCATION SHALL BE MINIMUM OF 35' (FEET) TO FRONT LOT LINE, 20' (FEET) TO SIDE STREET LINE, 5' (FEET) TO INTERIOR LOT LINE, AND 5' (FEET) TO REAR LOT LINE.

WITNESS OUR HANDS AND SEALS THIS 25TH DAY OF NOVEMBER 1949.

R. Sheldon Gentry
Edith Virginia Gentry

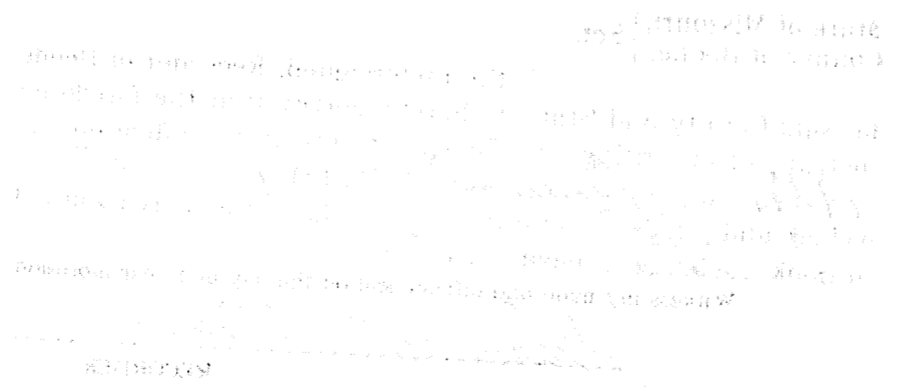
F-9

STATE OF MISSOURI ss
COUNTY OF BOONE

ON THIS 25TH DAY OF NOVEMBER 1949 BEFORE ME, PERSONALLY APPEARED R. SHELDON GENTRY AND EDITH VIRGINIA GENTRY, HIS WIFE, TO ME KNOWN TO BE THE PERSONS DESCRIBED IN AND WHO EXECUTED THE FOREGOING INSTRUMENT AND ACKNOWLEDGED THAT THEY EXECUTED THE SAME AS THEIR FREE ACT AND DEED. IN TESTIMONY WHEREOF, I HAVE HEREUNTO SET MY HAND AND AFFIXED MY OFFICIAL SEAL AT MY OFFICE IN SAID COUNTY, THE DAY AND YEAR FIRST ABOVE WRITTEN.

MY TERM OF OFFICE AS A NOTARY PUBLIC WILL EXPIRE 16TH MAY, 1953.

Harry L. Gentry
NOTARY PUBLIC



APPROVED BY THE PLANNING AND ZONING COMMISSION Nov. 29, 1949

L. L. Mott
CHAIRMAN

APPROVED Nov. 25, 1949

Oral W. James
CITY ENGINEER

ACCEPTED BY ORDINANCE OF THE CITY COUNCIL
APPROVED Dec 17, 1949

Roy Sappin
MAYOR

ATTEST: F. L. Boggs
CITY CLERK

(F9)