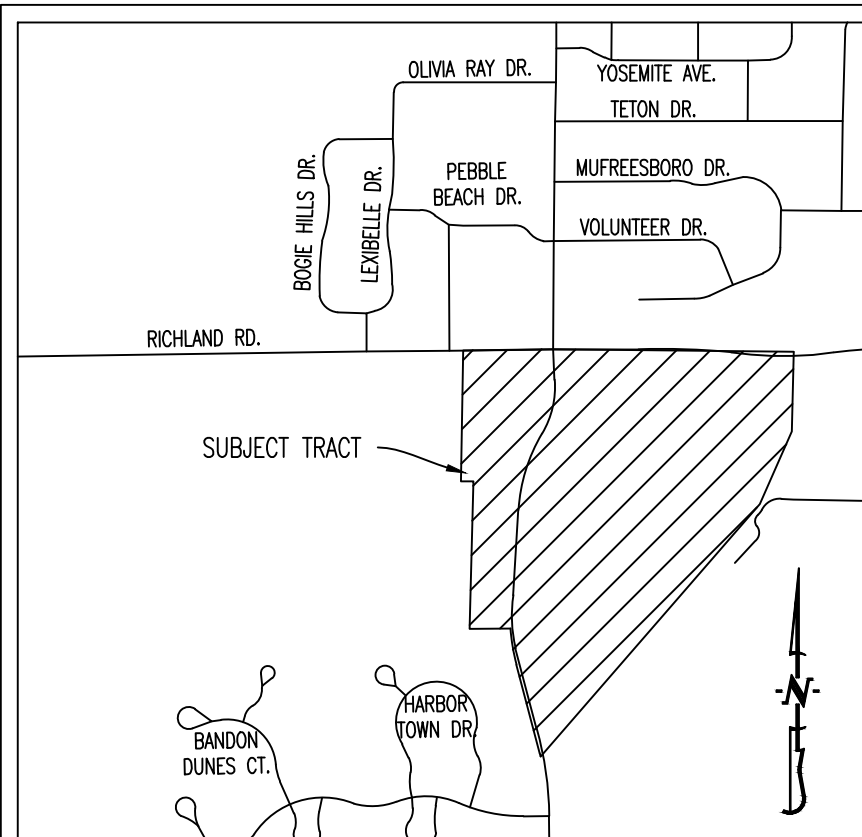


TREE PRESERVATION PLAN FOR THE VANTAGE

A MAJOR SUBDIVISION LOCATED IN THE NORTHWEST HALF OF SECTION 15, TOWNSHIP 48 NORTH, RANGE 12 WEST COLUMBIA, BOONE COUNTY, MISSOURI
DECEMBER 12, 2025

OWNER:
TORI - BEN FARMS, LLC
1002 HAMPTON DR.
CENTRALIA, MO 65240

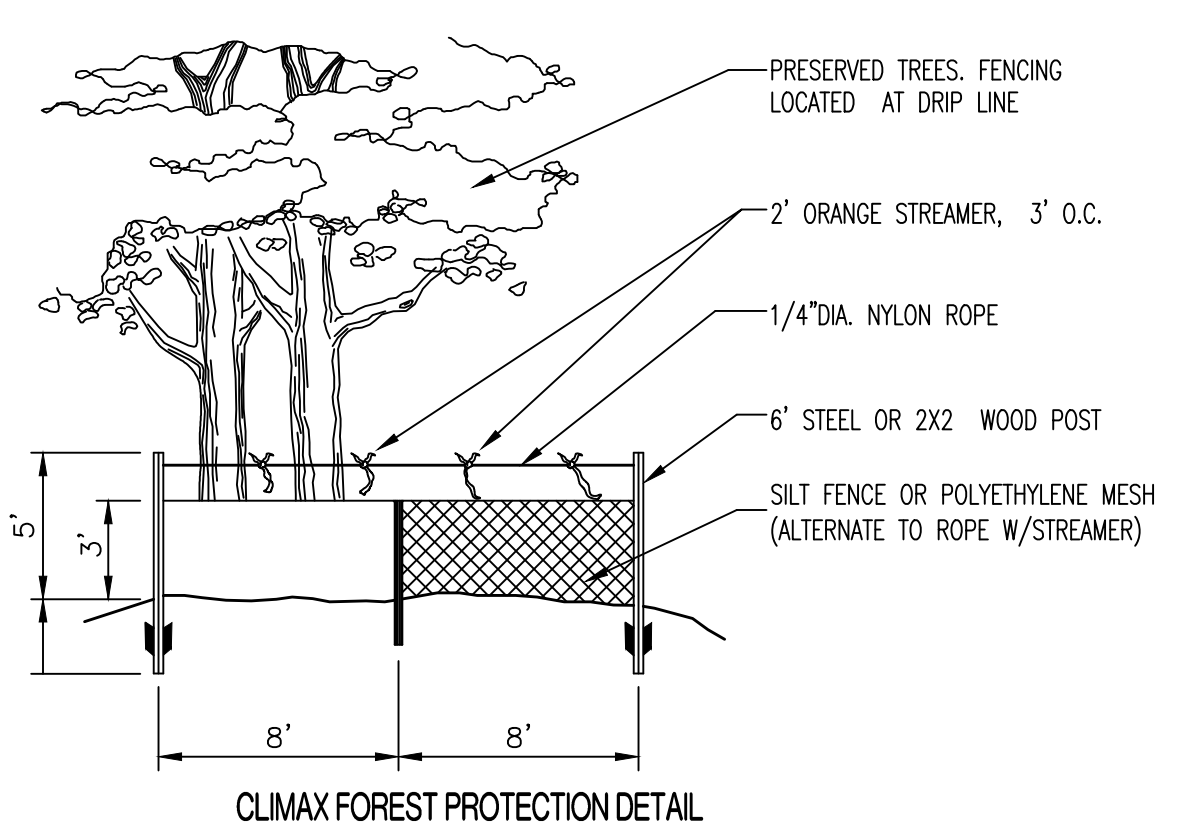
DEVELOPER:
VANTAGE APARTMENTS LLC
5661 TELEGRAPH ROAD, STE 4B
ST. LOUIS, MO 63129-4275



SCALE: 1"=100'
0 50 100 200
BEARINGS ARE REFERENCED TO GRID NORTH, OF THE MISSOURI STATE PLANE COORDINATE SYSTEM (CENTRAL ZONE), OBTAINED FROM GPS OBSERVATION.



- EXISTING CLIMAX FOREST = 8.28 AC.
- EXISTING CLIMAX FOREST TO REMAIN = 2.07 AC. (25.00%)
- PROPOSED CLEARING LIMITS
- TREE PROTECTION BARRIER.
- SIGNIFICANT TREES : 28
- SIGNIFICANT TREES TO BE REMOVED: 20
- SIGNIFICANT TREES TO BE PRESERVED: 8 (29%)



- NOTES:**
- CONTRACTOR TO INSTALL TREE PRESERVATION SIGN 50' FROM CLIMAX FOREST TO BE PRESERVED. SIGN TO STATE "TREES BEYOND SIGN ARE WITHIN A PRESERVED CLIMAX FOREST PROTECTED BY CITY OF COLUMBIA ORDINANCES. CLEARING OF TREE IS NOT ALLOWED WITHIN PROTECTED AREA UNLESS TREE PRESERVATION PLAN IS UPDATED.
 - CLIMAX FOREST PRESERVATION AREAS MAY BE REVISED, MOVED AND/OR CHANGED. ANY SUCH CHANGES SHALL ONLY BE DONE WITH A MODIFIED TREE PRESERVATION PLAN SUBMITTED TO AND APPROVED BY THE CITY ARBORIST.

PREPARED BY:
CROCKETT
ENGINEERING CONSULTANTS
1000 West Nifong Blvd., Bldg. 1
Columbia, Missouri 65203
(573) 447-0292
www.crockettengineering.com



REVISION 1 01/12/2026
ORIGINAL 12/15/2025
CROCKETT JOB #250339