

Sidewalk Plan- Sta 0+95.50 to Sta 5+75.00

No.	Date	By	Revision

W. BROADWAY SIDEWALK
(MAPLEWOOD DR. TO WEST BLVD.)
 Plan Sheet 1

Mission
 Provide safe, sustainable
 infrastructure that promotes
 positive communities.

701 East Broadway
 P.O. Box 80115
 Columbia, MO 65205
 (573) 875-2489

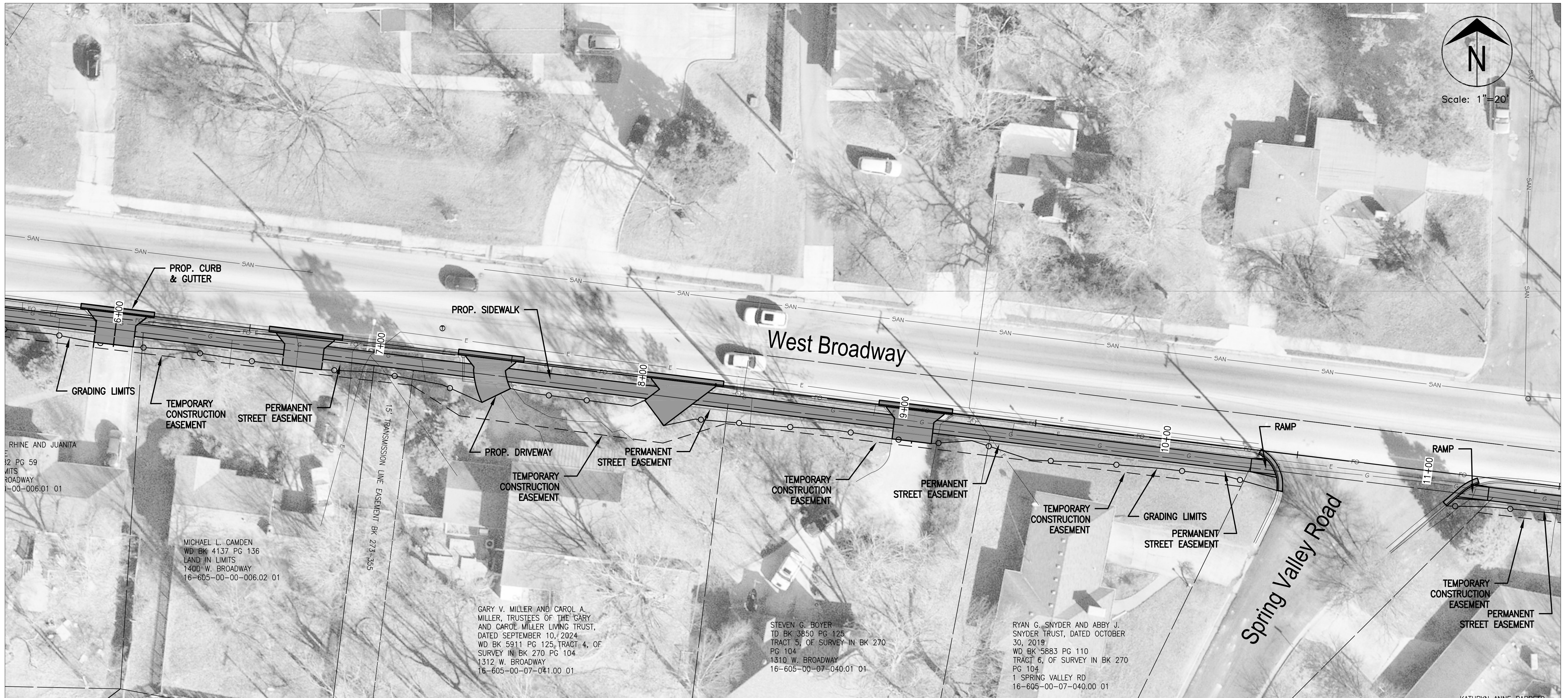


Shane Steven Creech
 Registered Professional
 Engineer
 PE-2007011061

File No.	C00759
Scale:	As Shown
Date:	6/12/2025
Des.	A.N.H.
Dwn.	A.N.H.
Chk.	A.A.A.

Sheet

1 of 4



Sidewalk Plan- Sta 5+75.00 to Sta 11+50.00

No.	Date	By	Revision

W. BROADWAY SIDEWALK
(MAPLEWOOD DR. TO WEST BLVD.)
 Plan Sheet 2

Mission
 Provide safe, sustainable infrastructure that promotes positive communities.

701 East Broadway
 P.O. Box 80115
 Columbia, MO 65205
 (573) 875-2489



Shane Steven Creech
 Registered Professional Engineer
 PE-2007011061

File No. C00759
 Scale: As Shown
 Date: 6/27/2025
 Des. A.N.H.
 Dwn. A.N.H.
 Chk. A.A.A.

C:\CADD\PROJECTS\2025\W. Broadway Sidewalk (Maplewood Dr. to West Blvd.)\DWG\W. Broadway Sidewalk (Maplewood Dr. to West Blvd.)_250625.dwg



Sidewalk Plan- Sta 11+50.00 TO Sta 16+50.00

No.	Date	By	Revision

W. BROADWAY SIDEWALK
(MAPLEWOOD DR. TO WEST BLVD.)
 Plan Sheet 3

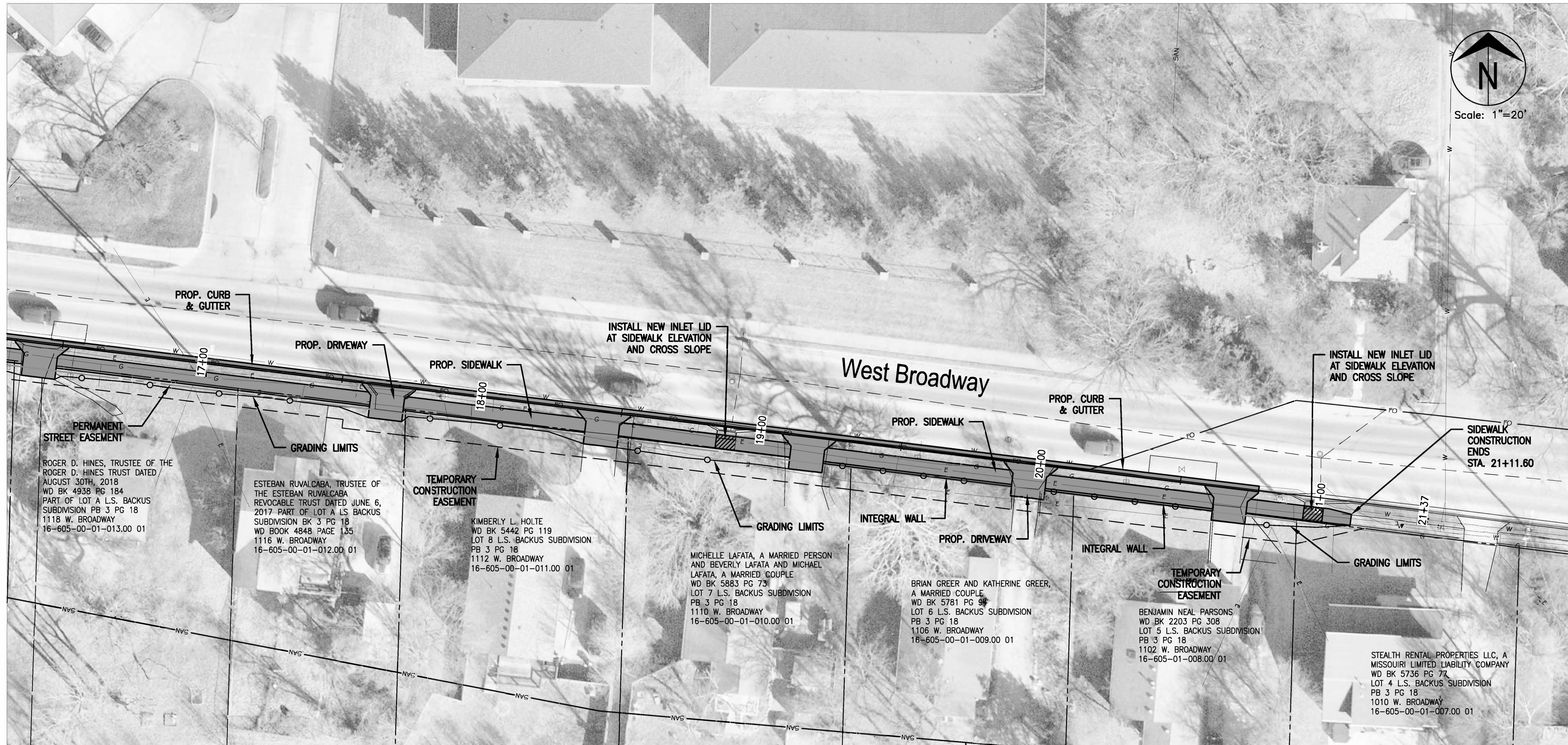
Mission
 Provide safe, sustainable
 infrastructure that promotes
 positive communities.



Shane Steven Creech
 Registered Professional
 Engineer
 PE-2007011061

File No.	C00759
Scale:	As Shown
Date:	6/12/2025
Des.	A.N.H.
Dwn.	A.N.H.
Chk.	A.A.A.

C:\CADD\PROJECTS\2025\W. Broadway Sidewalk (Maplewood to West Blvd) - 6/12/2025 12:46:16 PM



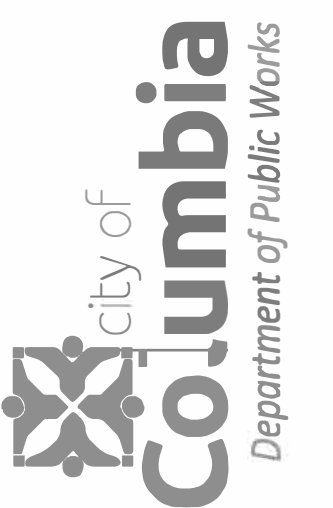
Sidewalk Plan- Sta 16+50.00 TO Sta 21+11.60

No. Date By Revision

W. BROADWAY SIDEWALK
 (MAPLEWOOD DR. TO WEST BLVD.)
 Plan Sheet 4

Mission
 Provide safe, sustainable
 infrastructure that promotes
 positive communities.

701 East Broadway
 P.O. Box 8015
 Columbia, MD 21045
 (410) 739-2488



Shane Steven Creech
 Registered Professional
 Engineer
 PE-2007011061

File No. C00759
 Scale: As Shown
 Date: 6/12/2025
 Des. A.N.H.
 Dwn. A.N.H.
 Chk. A.A.A.

Sheet
 4 of 4