



CITY OF COLUMBIA  
MUNICIPAL SERVICES CENTER  
SOUTH

CONCEPT PHASE 1 PLAN

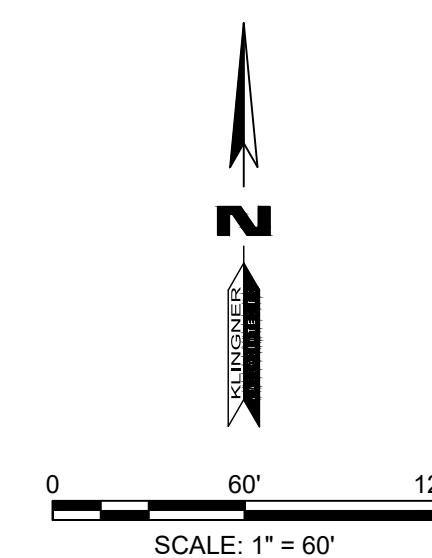
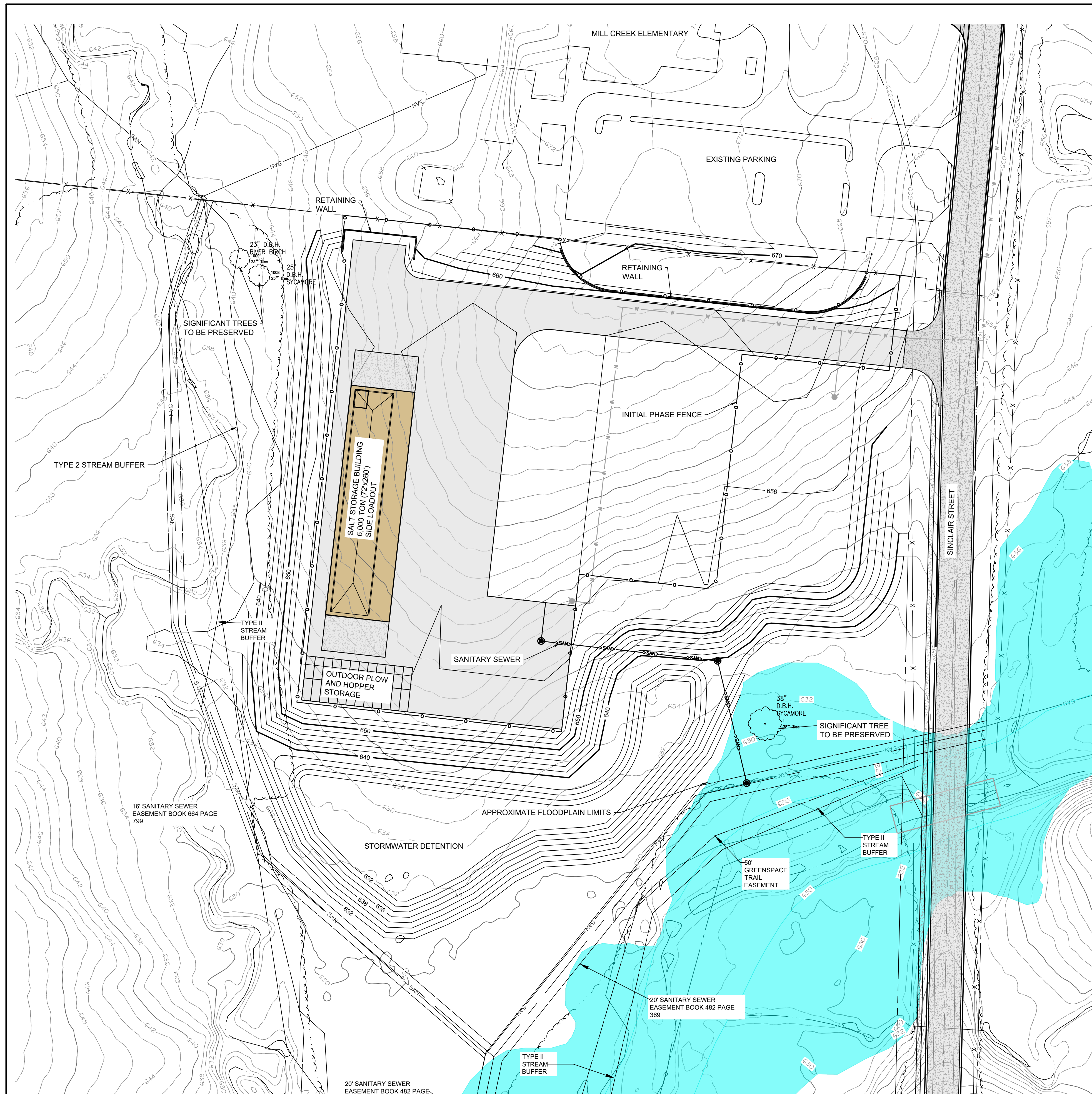
FEBRUARY 2024

**NARRATIVE:**

THE INITIAL PROJECT PHASE INVOLVES CONSTRUCTION OF A NEW SALT STORAGE FACILITY ALONG SOUTH SINCLAIR STREET, JUST SOUTH OF MILL CREEK ELEMENTARY SCHOOL. A FACILITY IN THIS LOCATION WILL ALLOW FOR IMPROVED STREET MAINTENANCE DURING WINTER BY REDUCING THE DISTANCE FOR STREET CREWS TO ACCESS SALT.

**BELOW ARE SOME KEY ITEMS PROPOSED:**

- 1) BUILDING SIZE: 18,720 SF (72' x 260')
- 2) SALT STORAGE VOLUME: 6,000 TON
- 3) APPROXIMATE AREA DISTURBED: 10.7 ACRES
- 4) APPROXIMATE CUBIC YARDS OF EARTHWORK: 70,000
- 5) OUTDOOR FLOW AND HOPPER STORAGE SPACE TO ACCOMMODATE AS NEEDED
- 6) FACILITY TO UTILIZE CITY UTILITIES. ELECTRIC UPGRADES ALREADY PLANNED FOR THE AREA.
- 7) A TREE AUDIT WAS COMPLETED BY THE CITY AND SIGNIFICANT TREES WILL BE PRESERVED.
- 8) THE ADJACENT FLOOD PLAIN AND STREAM BUFFER CORRIDORS WILL BE PRESERVED.
- 9) BUILDING ROOF, WHERE POSSIBLE, WILL BE DESIGNED TO SUPPORT PHOTOVOLTAIC PANELS FOR ELECTRIC GENERATION ON SITE.
- 10) FUTURE DEVELOPMENT ON SITE MAY INCLUDE ELECTRIC VEHICLE CHARGING STATIONS.



**KLINGNER**  
**& ASSOCIATES, P.C.**  
Engineers • Architects • Surveyors  
www.klingner.com

Columbia, Missouri  
3622 Endeavor Ave., Ste 117  
573.355.5988

Quincy, IL Hannibal, MO  
Burlington, IA Galesburg, IL Peella, IA  
Davenport, IA Carbondale, IL