

Source: Nearmap, <https://www.nearmap.com/us/en>

Case # 140-2024 - 5301 St. Charles Road Rezoning



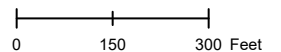
- Columbia City Limit
- City Property
- City Zoning
- Parcels

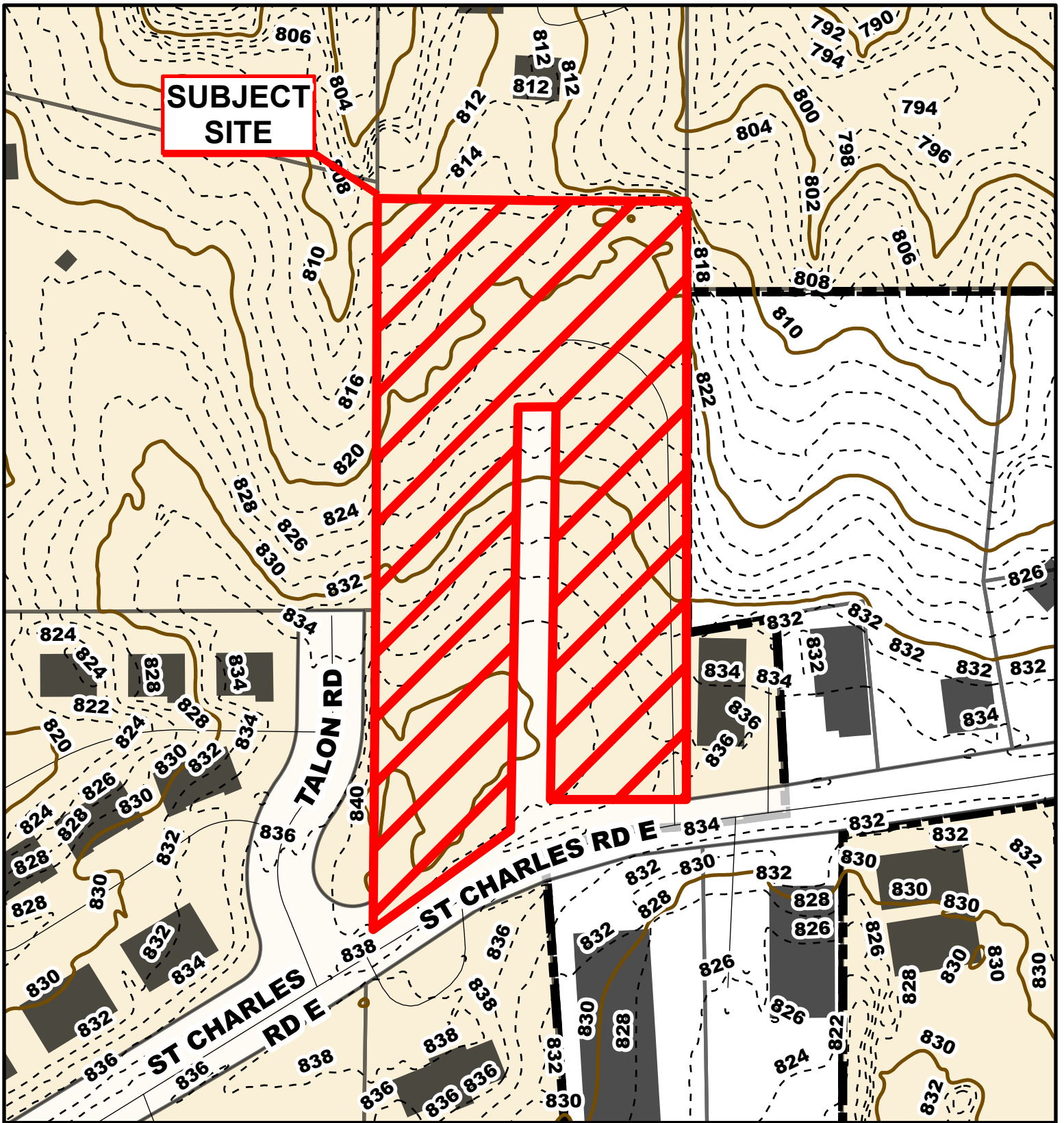


Parcel Data Source: Boone County Assessor

Created by The City of Columbia - Community Development Department

2022 Imagery: NearMap





Case # 140-2024 - 5301 St. Charles Road Rezoning

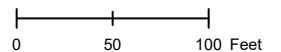


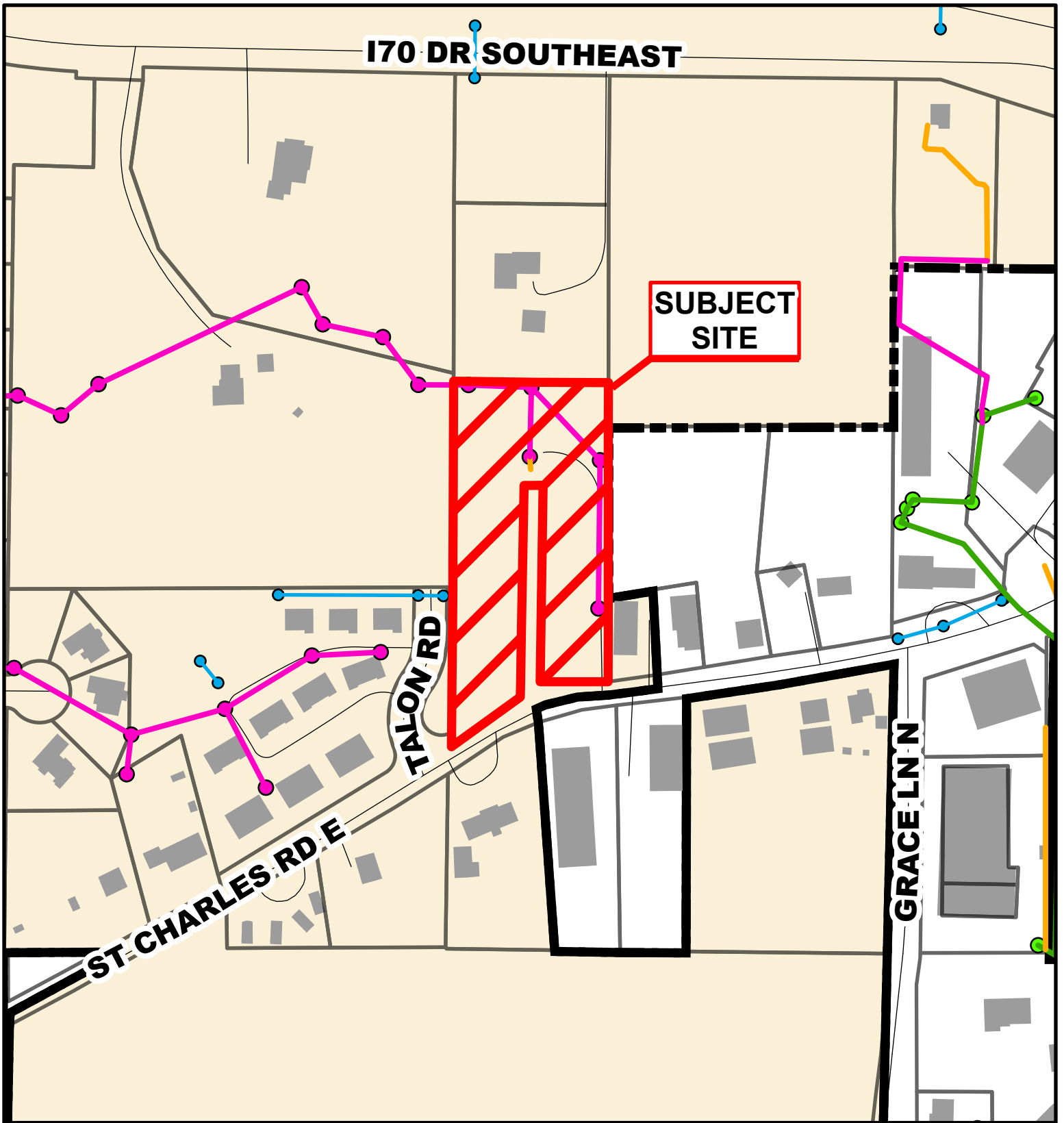
- 10 Foot Contour Lines
- 2 Foot Contour Lines
- City of Columbia
- Parcels



Parcel Data Source: Boone County Assessor

Created by The City of Columbia - Community Development Department





Case # 140-2024 - 5301 St. Charles Road

Rezoning



- City Sanitary Line
- BCRSD Sanitary Line
- Private Sanitary Line
- City Storm Lines
- Parcels
- Columbia City Limit

