



**Case # 28-2025 - 700 W. Green Meadows Road  
STR Conditional Use Permit**

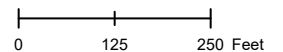


 City Zoning  Parcels

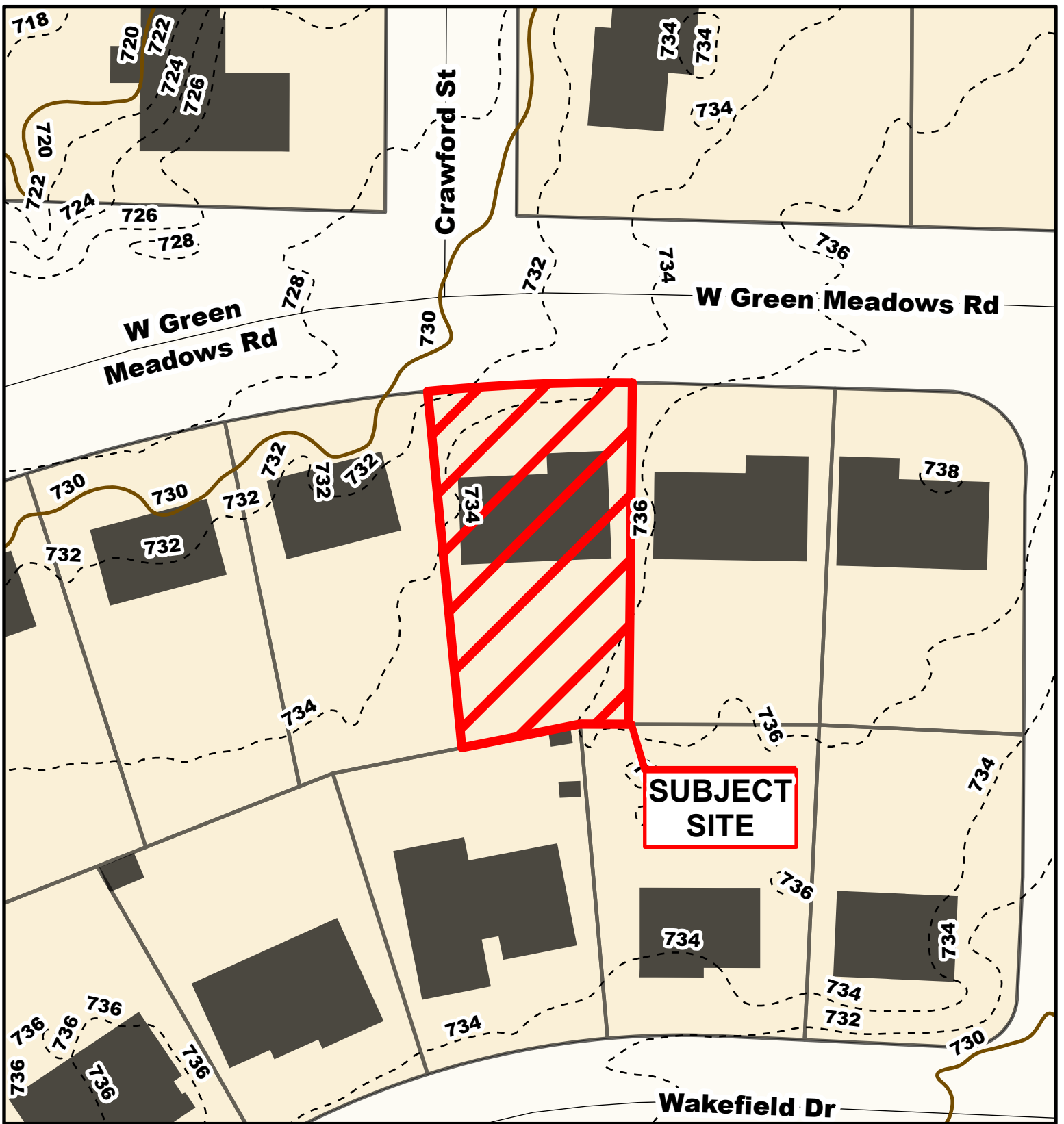
Parcel Data Source: Boone County Assessor

Created by The City of Columbia - Community Development Department

2022 Imagery: NearMap





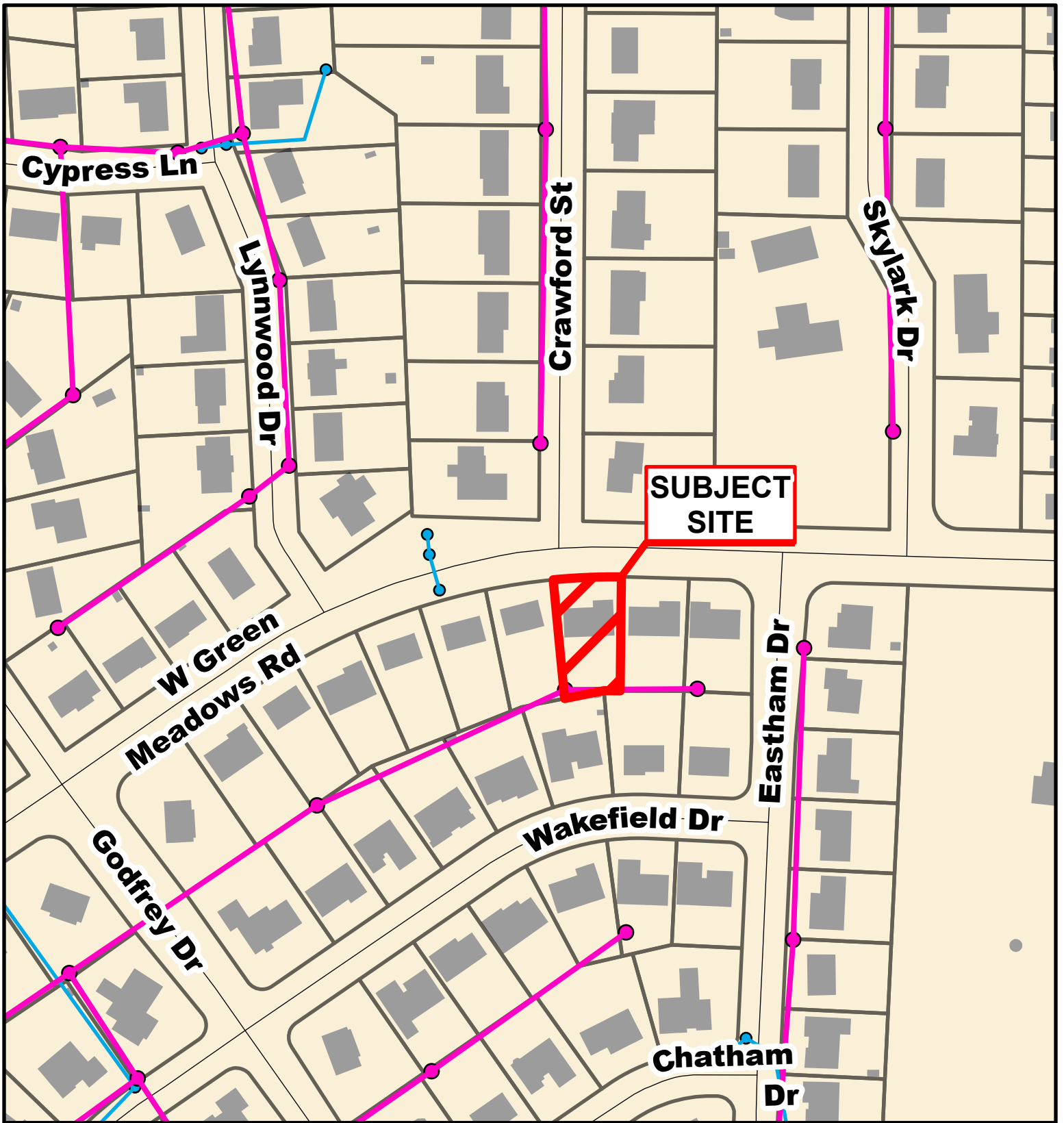


**Case # 28-2025 - 700 W. Green Meadows Road  
STR Conditional Use Permit**



— 10 Foot Contour Lines    □ Parcels  
- - - 2 Foot Contour Lines





**Case # 28-2025 - 700 W. Green Meadows Road**  
**STR Conditional Use Permit**



- City Sanitary Line
- City Storm Lines
- Parcels

