



Source: Nearmap. <https://www.nearmap.com/us/en>

# Case # 223-2023 - 3100-3109 Keene Court

## Right of Way Vacation



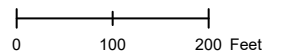
City Zoning  Parcels

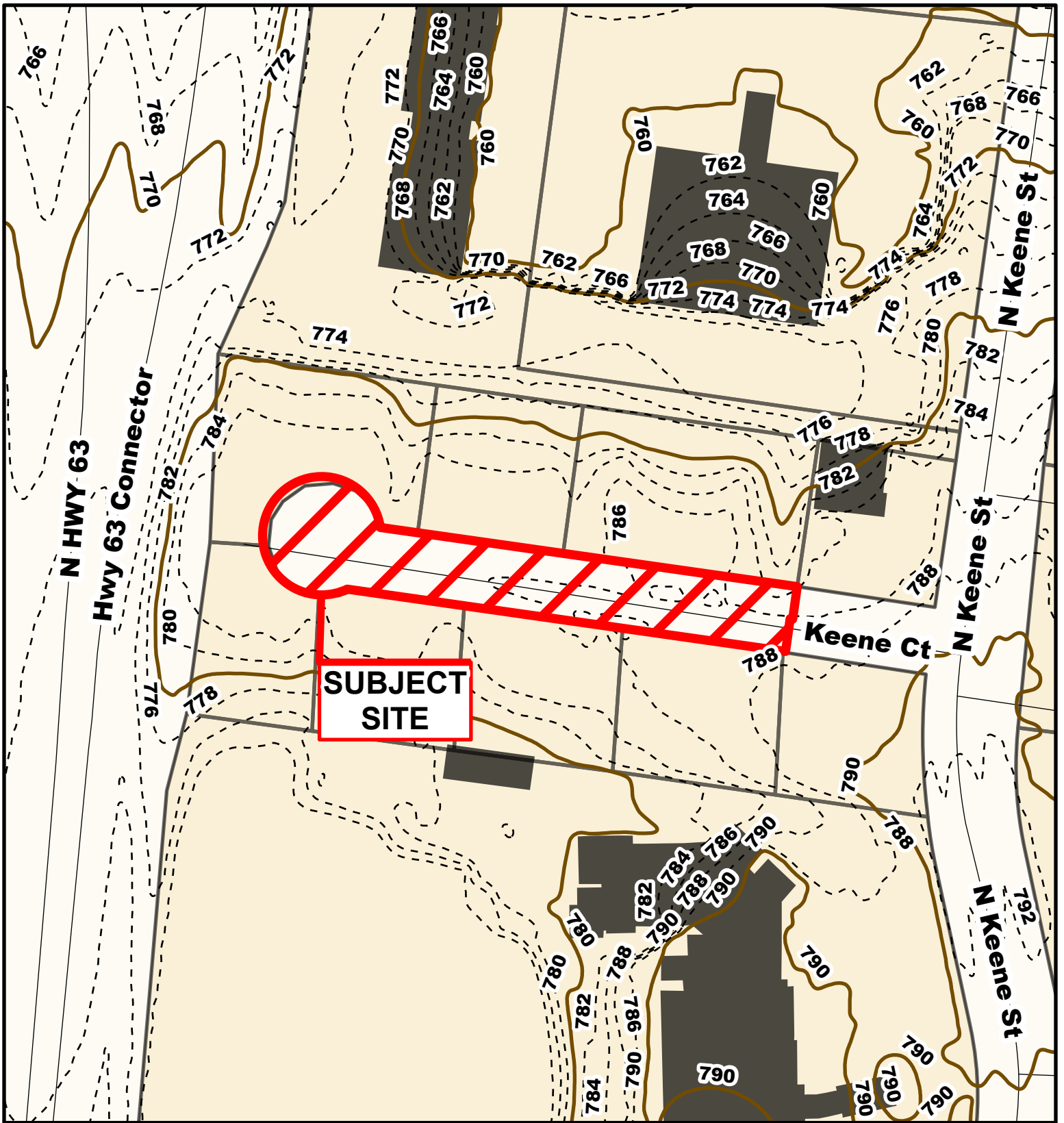


Parcel Data Source: Boone County Assessor

Created by The City of Columbia - Community Development Department

2022 Imagery: NearMap



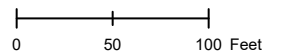


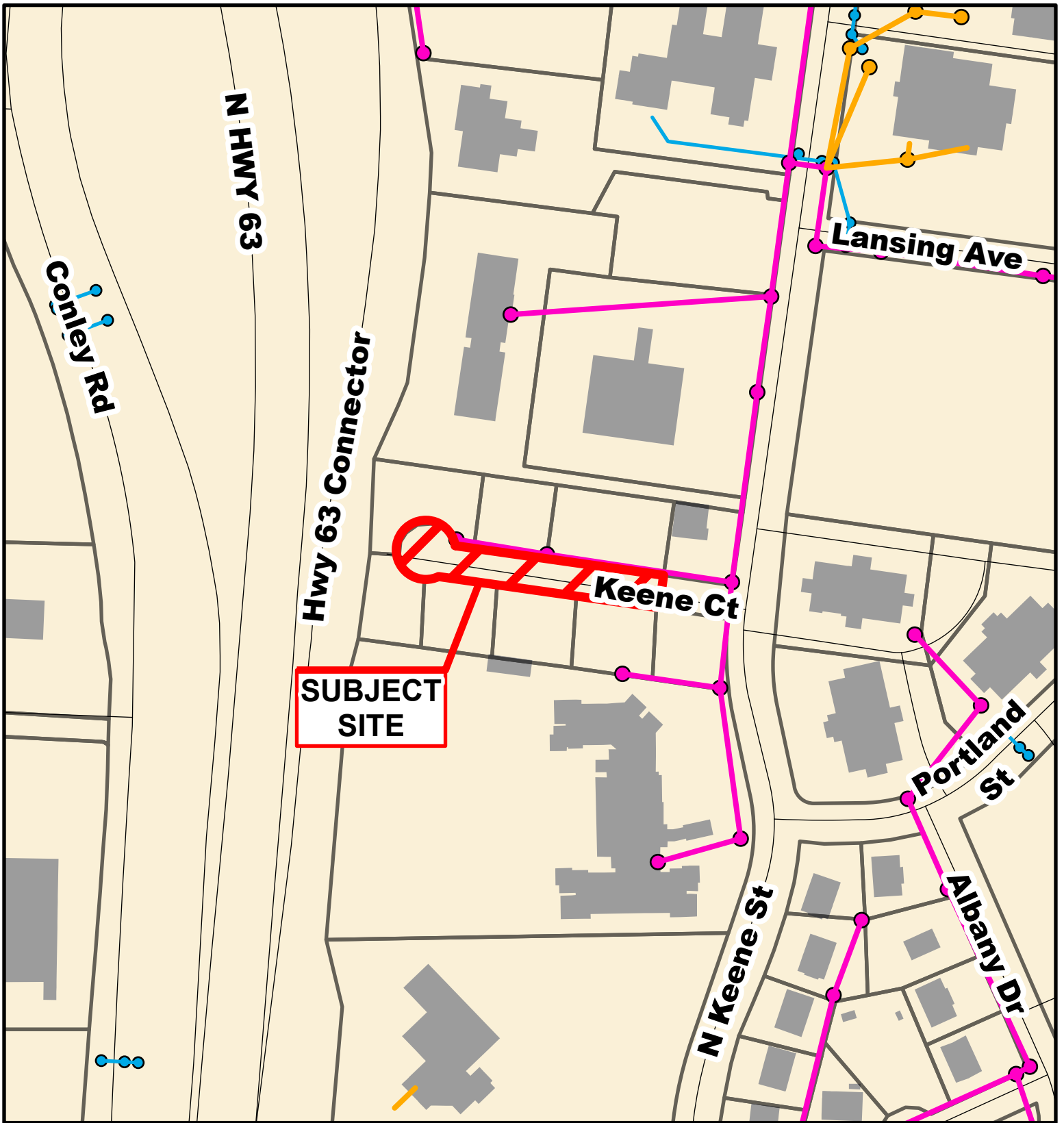
**Case # 223-2023 - 3100-3109 Keene Court  
Right of Way Vacation**



Parcel Data Source: Boone County Assessor  
Created by The City of Columbia - Community Development Department

- 10 Foot Contour Lines
- 2 Foot Contour Lines
- Parcels





**Case # 223-2023 - 3100-3109 Keene Court**  
**Right of Way Vacation**



- City Sanitary Line
- City Storm Lines
- Private Sanitary Line
- Parcels

