

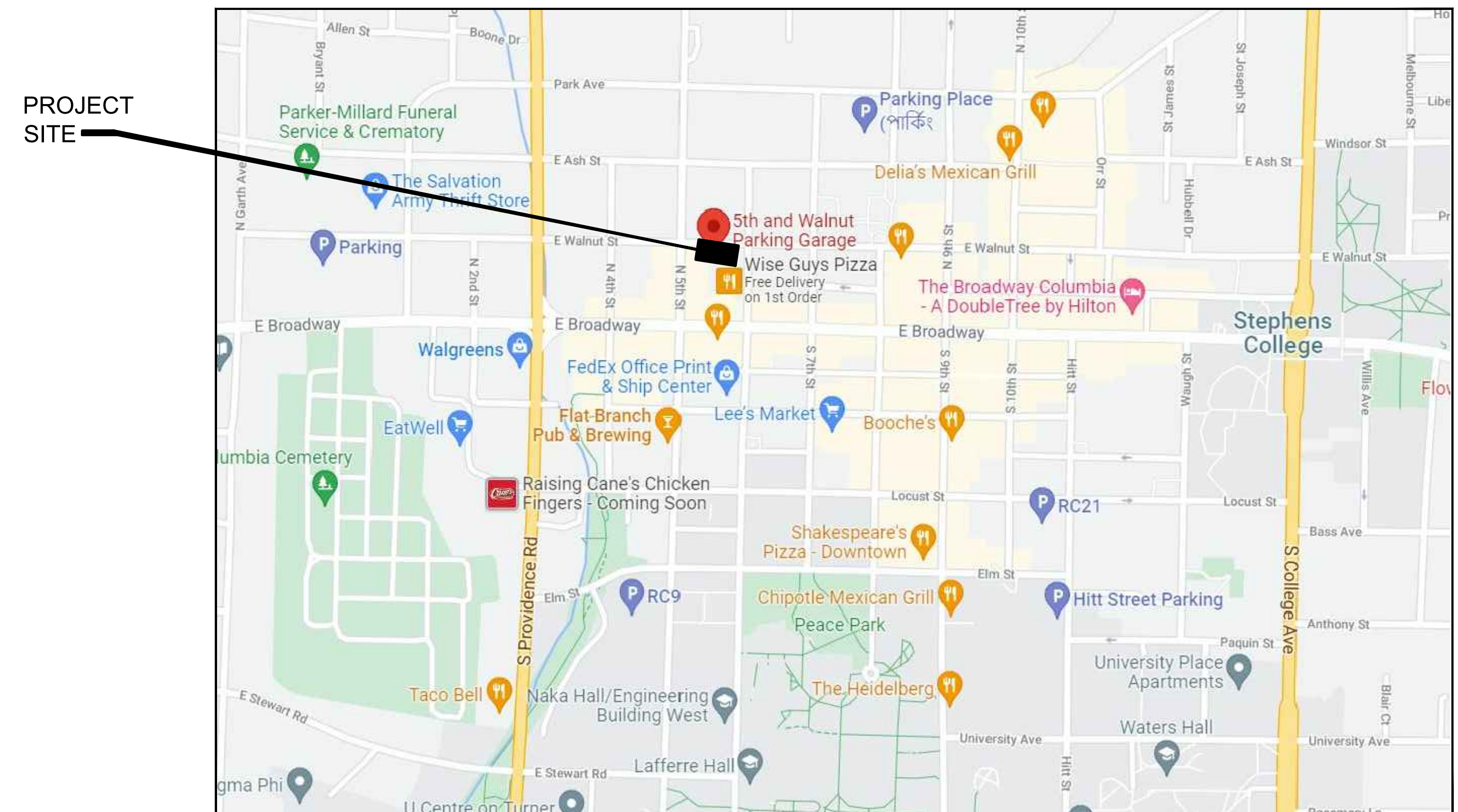
5TH AND WALNUT COVERED LEVELS FACADE PANEL SCREENS

COLUMBIA, MISSOURI
PROJECT No: 31-008641.00



2895 Greenspoint Parkway
Suite 600
Hoffman Estates, IL 60169
847.697.2640 Ph
www.walkerconsultants.com

| | |
|------|---|
| A000 | COVER SHEET, SHEET INDEX, LOCATION MAP |
| A001 | GENERAL NOTES & ADMINISTRATION REQUIREMENTS |
| A201 | NORTH ELEVATION |
| A202 | WEST ELEVATION |
| A203 | SOUTH ELEVATION |
| A204 | EAST ELEVATION AND WALL SECTION |
| A501 | NOT USED |
| A502 | DETAILS |
| A503 | TYPE 2 SCREEN REFERENCE |
| A504 | TYPE 3 SCREEN REFERENCE |



ISSUED FOR BID
FEBRUARY 11, 2022

GENERAL NOTES

A. CONSTRUCTION

1. The Contractor shall perform Work in accordance with all applicable Federal, State, and Local Codes, Laws and Ordinances. The Contractor shall promptly notify the Engineer of any known nonconformity with the intent of the Construction Documents and as-built conditions to the applicable Codes, Laws or Ordinances and request clarification from the Engineer prior to proceeding with Work which is deemed in conflict with the applicable Codes, Laws or Ordinances.
2. Fire Safety during construction, alteration or demolition shall comply with 2006 NFPA 1.
3. Prior to fabrication of any material or placement of concrete, field verify all existing dimensions and conditions shown on Drawings. Report all discrepancies to the Engineer immediately.
4. Do Not Scale Drawings.

B. CONSTRUCTION DOCUMENTS

1. Construction documents consist of these drawings and separately bound specifications.
2. Work shall be performed in coordination with construction observations by the Engineer to determine if the exposed existing construction is as assumed in the design.
3. Dimensions shown on plans are based on original construction documents. The Contractor is required to field verify all conditions for the purpose of preparing the bid and performing the Work.
4. Refer to Specifications for material specifications.

C. EXISTING SERVICES AND UTILITIES

1. Contractor shall review all existing conditions to determine all Electrical and Mechanical services and Utilities affected by the repair work.
2. Contractor shall coordinate with the City to have any conduits or other obstructions temporarily relocated.

D. CONSTRUCTION PHASING, SEQUENCING AND TRAFFIC MAINTENANCE

1. Work sequence shall be coordinated with the Owner's representative and all identified project representatives.
2. Owner will continue to use the parking structure during the Work.
3. Contractor shall not remove from service more parking than is needed to perform the work at any point in time. Contractor shall coordinate with the City to determine number of spaces that may be removed from service at any one time for completion of work.
4. Contractor is responsible for providing all temporary traffic control, barricades, and signage required to complete the work.
5. The Contractor is responsible for collection and removal of all construction debris on a daily basis, and the site shall be left in a neat and orderly condition, satisfactory to the Owner.
6. The Contractor is responsible for protecting all adjacent structures, landscaping, and other surfaces and items which could be affected by the Work.

E. POST-INSTALLED ANCHORS

1. Contractor shall locate existing embedded reinforcement using non-destructive testing prior to fabrication of attachments or drilling of holes. Notify Engineer of obstructions that will prevent installation of anchors at design locations.
2. Post-installed Anchors must be installed using the spacing and edge distances given on the plans or details. If field conditions dictate that the anchor spacing or edge distance be modified, the Contractor shall submit a field sketch to the Engineer for review prior to making any modifications.
3. Post-installed anchor holes shall be drilled per manufacturer's written instructions.
4. Adhesive Anchors shall be installed by an ACI-CRSI Certified "Adhesive Anchor Installer"

ADMINISTRATIVE REQUIREMENTS

A. CONTRACTUAL

1. Contractor shall perform the work in accordance with the executed contract with the Owner and these Contract Documents.
2. All the provisions of the AIA Document A201 "GENERAL CONDITIONS OF THE CONTRACT FOR CONSTRUCTION," 2017 Edition, Articles 1 through 15 inclusive is hereby made a part of the Contract Documents. When an Owner/Contractor Agreement is in conflict with the provisions of the AIA Document A201, the more stringent requirements shall apply.

A. SUMMARY OF WORK

1. Project consists of providing all materials, labor, equipment, supervision and delegated design services to install screening within the precast façade panel openings as shown.

B. PROJECT MANAGEMENT AND COORDINATION

1. Coordinate construction to ensure efficient and orderly installation of each part of the Work.
2. Schedule a Pre-Construction Kick-Off Meeting with Owner and Engineer.
3. Schedule Progress Meetings with Owner and Engineer at intervals appropriate to allow the work to be observed in progress for general conformance with the design intent.

C. SUBMITTAL PROCEDURES

1. Shop Drawing / Material Date Sheets: Prior to start of the Work, submit to Engineer for review shop drawings sealed by license design professional engaged by the Contractor and material data sheets for each product to be used on the project.
 - a. Coordinate each submittal with fabrication, purchasing, testing, delivery, other submittals, and related activities that require sequential activity.
 - b. No extension of the Contract Time will be authorized because of failure to transmit submittals enough in advance of the Work to permit processing.
 - c. Engineer will not accept submittals from sources other than Contractor.
 - d. Engineer will not accept submittals without review and stamp by the Contractor.
 - e. Identify deviations from the Contract Documents.

D. TEMPORARY FACILITIES AND CONTROLS

1. Provide field offices, storage trailers, and other support facilities as necessary for the Work.
2. Collect waste daily and, when containers are full, legally dispose of waste off-site.
3. Barricades, Warning Signs, Traffic Control, and Lights: Comply with industry standards, code requirements and applicable laws and regulations of the authorities having jurisdiction for erection of structurally adequate barricades. Provide all required barriers to prevent vehicles or pedestrians from entering construction work areas. Paint with appropriate colors, and provide graphic signs to inform personnel and public of hazard being protected against. When appropriate and needed provide lighting, including red or amber lights.
4. Electricity: Contractor shall provide portable generators to provide all electricity required for performing the Work.
5. Water: Contractor may use water supplied by the building from exterior hose bibs. Contractor shall limit water usage to prevent water waste.

E. PRODUCT REQUIREMENTS

1. Provide products of same kind from a single source. The term "product" includes the terms "material," "equipment," "system," and similar terms.
2. Deliver, store, and handle products using means and methods that will prevent damage, deterioration, and loss, including theft. Comply with manufacturer's written instructions.
3. Provide products that comply with the Contract Documents, are undamaged, and are new at the time of installation.
 - a. Provide products complete with accessories, trim, finish, and other devices and components needed for a complete installation and the intended use and effect.
4. Select products to comply with all of the following that are applicable:
 - a. Where only a single product or manufacturer is named, provide the item indicated. No substitutions will be permitted.
 - b. Where two or more products or manufacturers are named, provide one of the items indicated. No substitutions will be permitted.
 - c. Where products are specified by name, accompanied by the term "available products" or "available manufacturers," provide one of the named items or comply with provisions for "comparable product" to obtain approval for use of an unnamed product or manufacturer.



**5TH AND WALNUT
COVERED LEVELS FACADE PANEL SCREENS
PARKING STRUCTURE**

MISSOURI

COLUMBIA

| MARK | DATE | DESCRIPTION |
|------|------|-------------|
| | | |
| | | |
| | | |
| | | |
| | | |
| | | |
| | | |
| | | |
| | | |
| | | |
| | | |
| | | |
| | | |
| | | |
| | | |
| | | |
| | | |
| | | |
| | | |
| | | |
| | | |
| | | |
| | | |

PROJECT NO: 31-008641.00

DRAWN BY: SPK

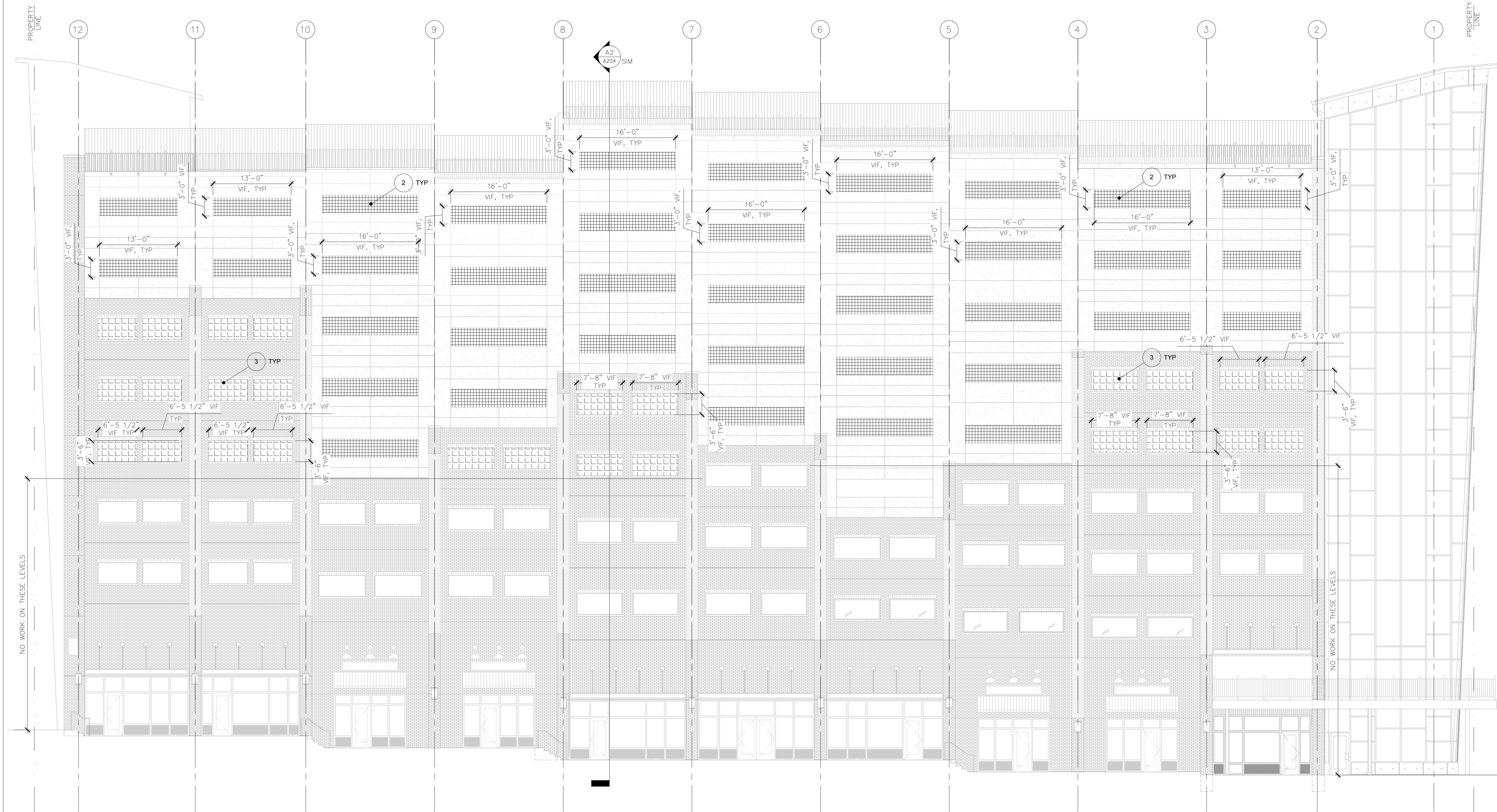
CHECKED BY: RAC

SHEET TITLE:

**GENERAL NOTES
& ADMIN
REQUIREMENTS**

A001

J:\31-008641-00-5TH_AND_WALNUT_ST_PS\ACAD\05-ARCH\A201-2-3-4 - TYPE 2 & 3 ONLY.DWG 2/9/2022 10:40:45 AM KOLTON, STEVE



SHEET NOTES:

- CONTRACTOR SHALL FIELD VERIFY ALL OPENING SIZES AND PREPARE SCREEN SHOP DRAWINGS FOR ENGINEER REVIEW PRIOR TO FABRICATION. NOTIFY ENGINEER OF CONFLICTS.

LEGEND:

- [Grid Pattern] TYPE 2 SCREEN REFER TO A502, A503
- [Cross-hatch Pattern] TYPE 3 SCREEN REFER TO A502, A504

WALKER CONSULTANTS
 2895 Greenspoint Parkway
 Suite 600
 Hoffman Estates, IL 60169
 847.697.2640 Ph
 www.walkerconsultants.com

5TH AND WALNUT
COVERED LEVELS FACADE PANEL SCREENS
PARKING STRUCTURE

COLUMBIA MISSOURI

| MARK | DATE | DESCRIPTION |
|------|------|-------------|
| | | |
| | | |
| | | |

PROJECT NO: 31-008641.00
 DRAWN BY: CWM
 CHECKED BY:
 SHEET TITLE:

NORTH ELEVATION

A201

A1 NORTH ELEVATION
 SCALE: 1/8" = 1'-0"

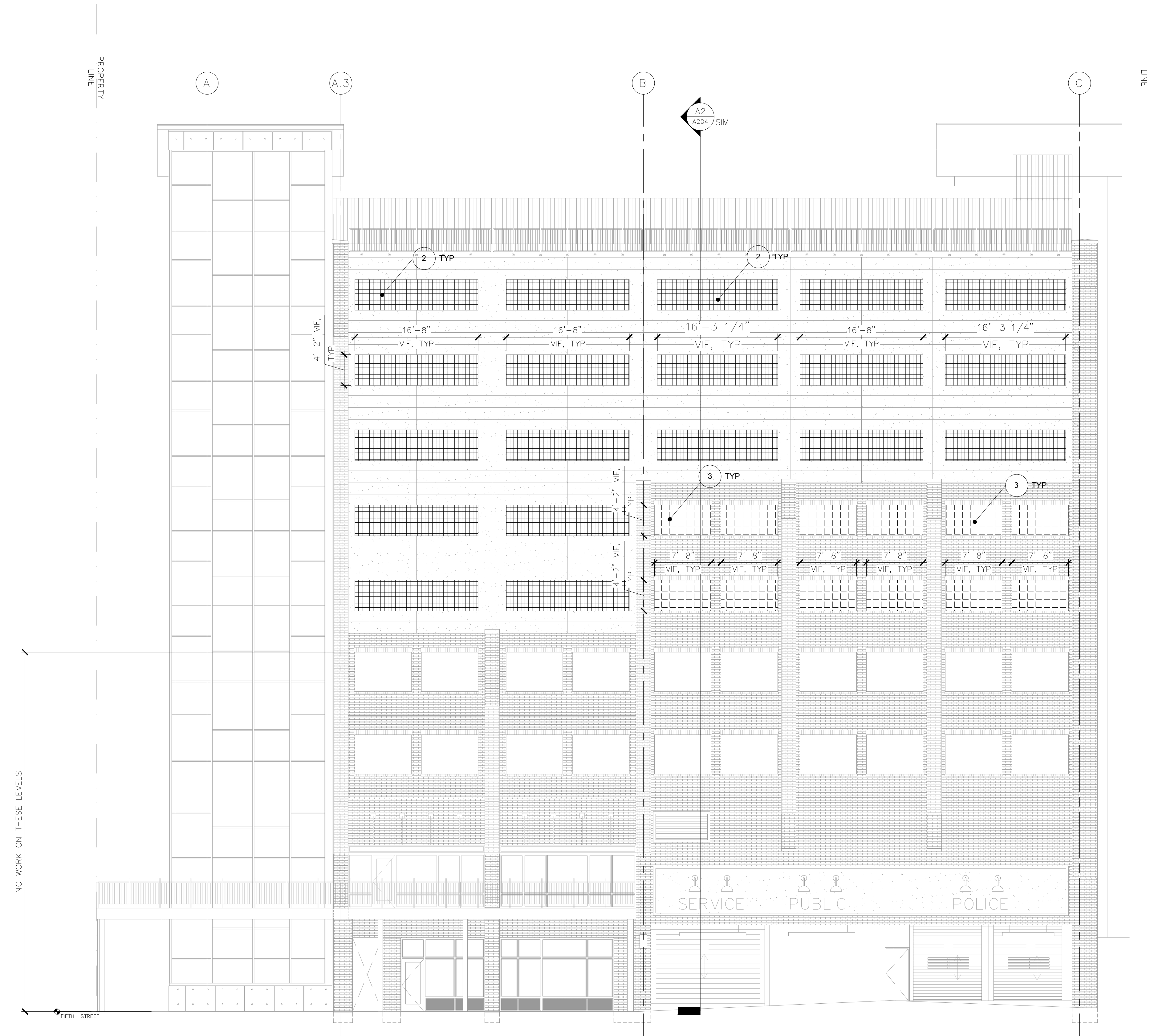
J:\31-008641-00-5TH_AND_WALNUT_ST_PS\ACAD\05-ARCH\A201-2-3-4 - TYPE 2 & 3 ONLY.DWG 2/8/2022 8:26:14 AM KOLTON, STEVE

SHEET NOTES:

- CONTRACTOR SHALL FIELD VERIFY ALL OPENING SIZES AND PREPARE SCREEN SHOP DRAWINGS FOR ENGINEER REVIEW PRIOR TO FABRICATION. NOTIFY ENGINEER OF CONFLICTS.

LEGEND:

- TYPE 2 SCREEN REFER TO A502, A503
- TYPE 3 SCREEN REFER TO A502, A504



A1 WEST ELEVATION
SCALE: 1/8" = 1'-0"

5TH AND WALNUT
COVERED LEVELS FACADE PANEL SCREENS
PARKING STRUCTURE

COLUMBIA MISSOURI

| MARK | DATE | DESCRIPTION |
|------|------|-------------|
| | | |
| | | |
| | | |
| | | |

PROJECT NO: 31-008641.00
DRAWN BY: CWM
CHECKED BY: DR
SHEET TITLE:

WEST ELEVATION


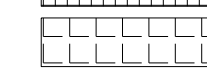
A202

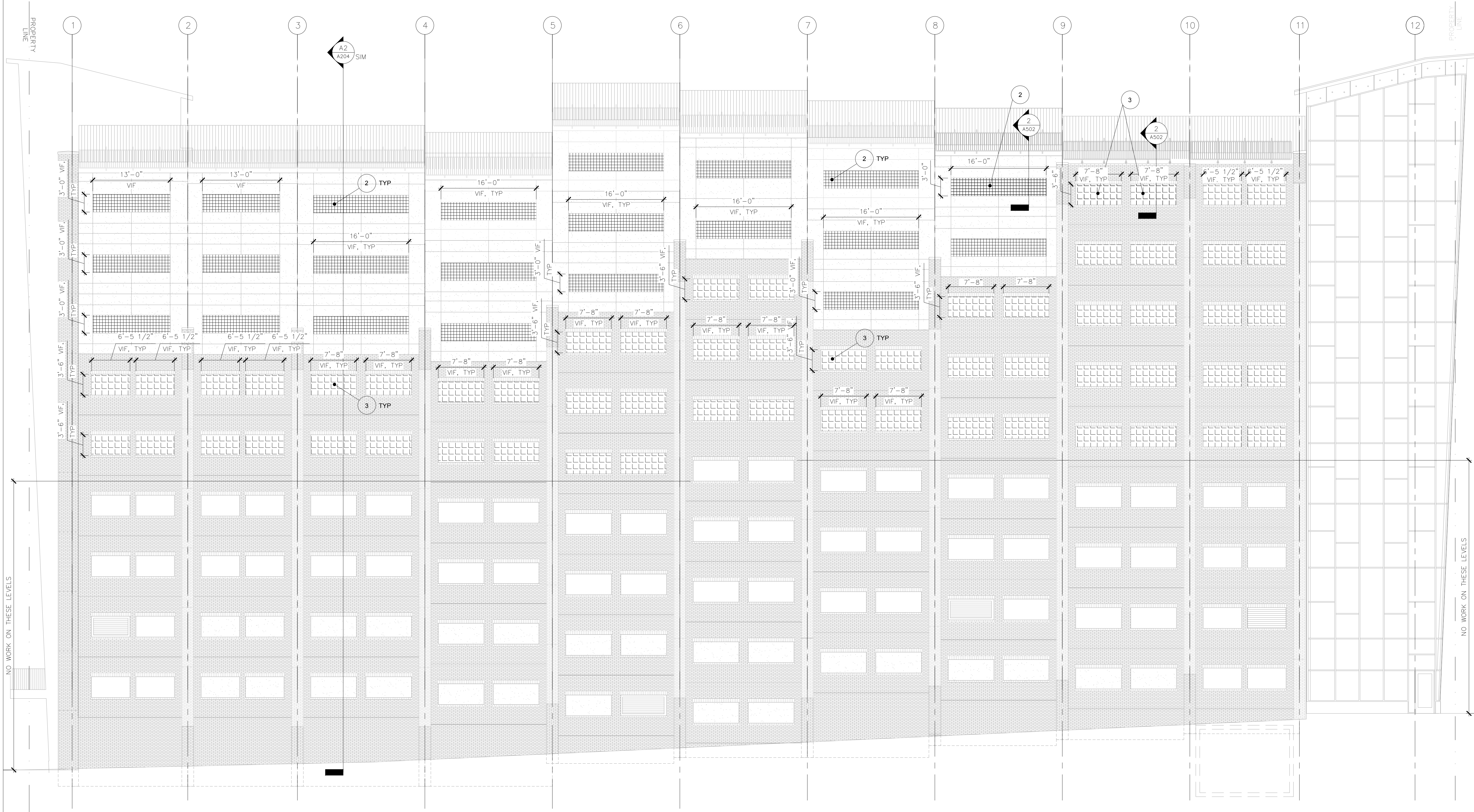
J:\31-008641-00-5TH_AND_WALNUT_ST_PS\ACAD\05-ARCH\A201-23-4 - TYPE 2 & 3 ONLY.DWG 2/9/2022 10:40:45 AM KOLTON, STEVE

SHEET NOTES:

- CONTRACTOR SHALL FIELD VERIFY ALL OPENING SIZES AND PREPARE SCREEN SHOP DRAWINGS FOR ENGINEER REVIEW PRIOR TO FABRICATION. NOTIFY ENGINEER OF CONFLICTS.

LEGEND:

-  TYPE 2 SCREEN REFER TO A502, A503
-  TYPE 3 SCREEN REFER TO A502, A504



A1 SOUTH ELEVATION
SCALE: 1/8" = 1'-0"

**5TH AND WALNUT
COVERED LEVELS FACADE PANEL SCREENS
PARKING STRUCTURE**

COLUMBIA MISSOURI

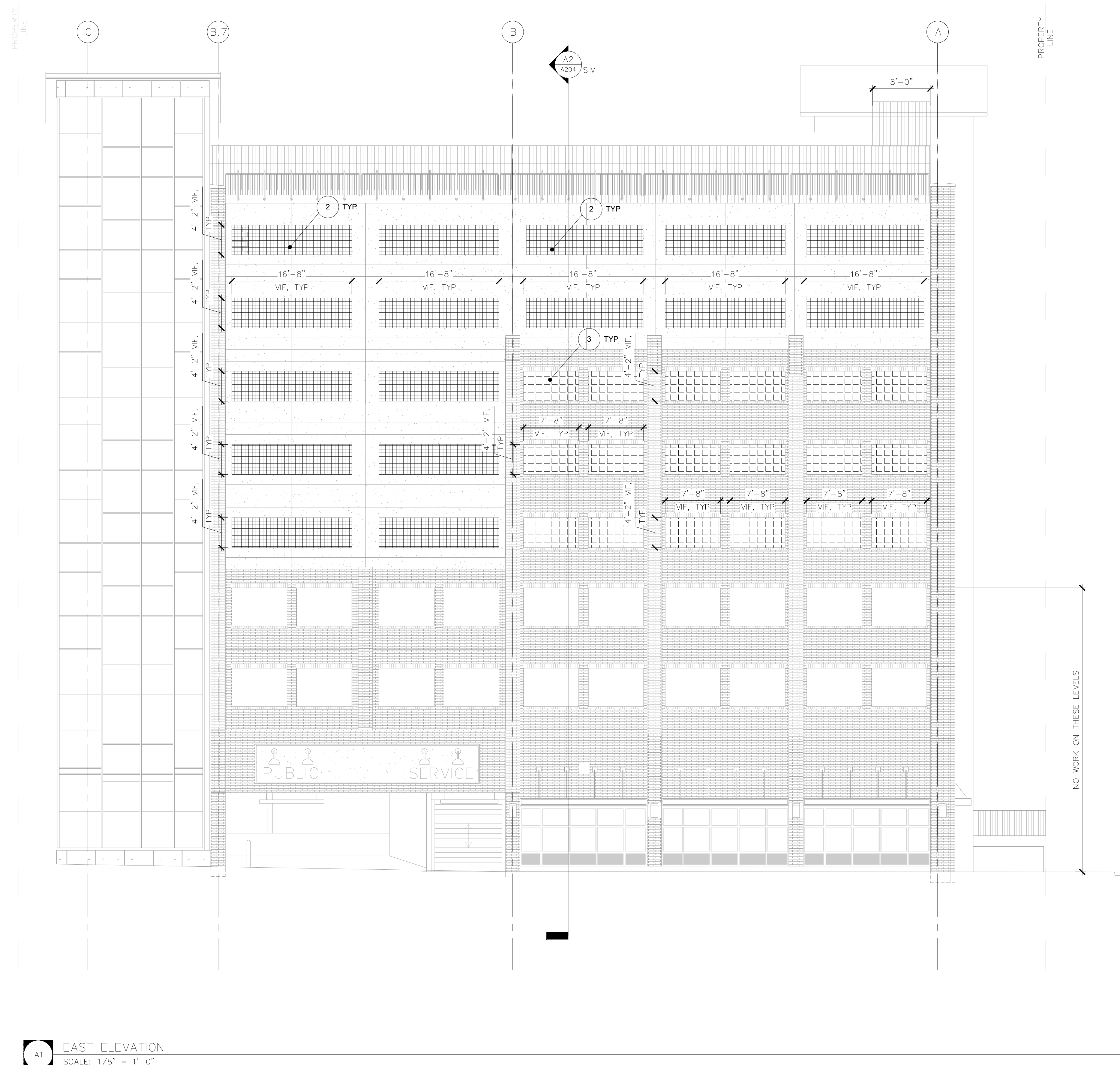
| MARK | DATE | DESCRIPTION |
|------|------|-------------|
| | | |
| | | |
| | | |

PROJECT NO: 31-008641.00
DRAWN BY: CWM
CHECKED BY: DR
SHEET TITLE:

SOUTH ELEVATION

A203

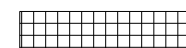

J:\31-008641-00-5TH_AND_WALNUT_ST_PS\ACAD\05-ARCH\A201-2-3-4 - TYPE 2 & 3 ONLY.DWG 2/8/2022 8:26:14 AM KOLTON, STEVE

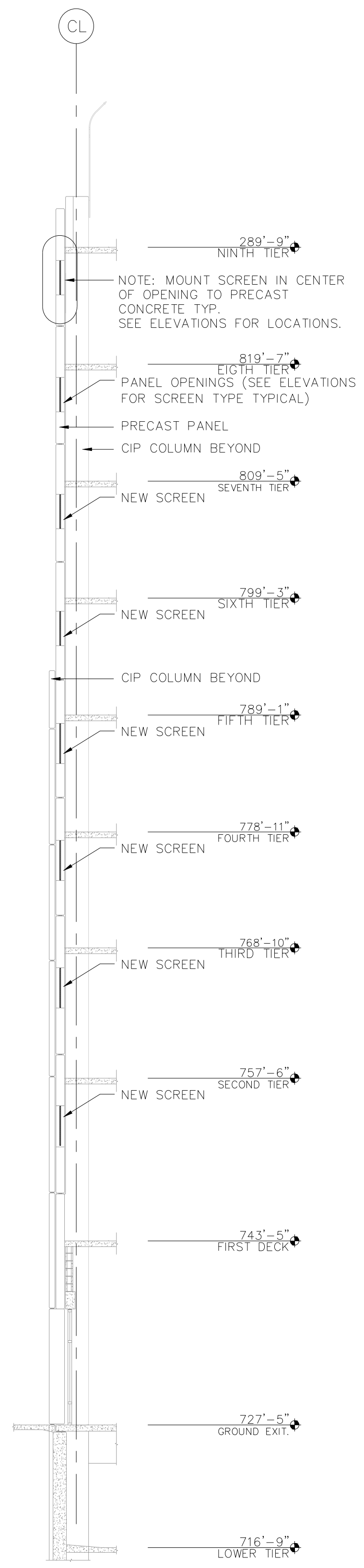


A1 EAST ELEVATION
SCALE: 1/8" = 1'-0"

A2 WALL SECTION - TYP
SCALE: 1/8" = 1'-0"

SHEET NOTES:
1. CONTRACTOR SHALL FIELD VERIFY ALL OPENING SIZES AND PREPARE SCREEN SHOP DRAWINGS FOR ENGINEER REVIEW PRIOR TO FABRICATION. NOTIFY ENGINEER OF CONFLICTS.

LEGEND:
 TYPE 2 SCREEN REFER TO A502, A503
 TYPE 3 SCREEN REFER TO A502, A504



ELEVATIONS SHOWN AT CUT. ELEVATIONS VARY w/ SLOPE OF DECK.

**5TH AND WALNUT
COVERED LEVELS FACADE PANEL SCREENS
PARKING STRUCTURE**

**EAST
ELEVATION AND
WALL SECTION**

| | |
|--------------|--------------|
| PROJECT NO: | 31-008641.00 |
| DRAWN BY: | CWM |
| CHECKED BY: | DR |
| SHEET TITLE: | |

| MARK | DATE | DESCRIPTION |
|------|------|-------------|
| | | |
| | | |
| | | |
| | | |

COLUMBIA MISSOURI

A204

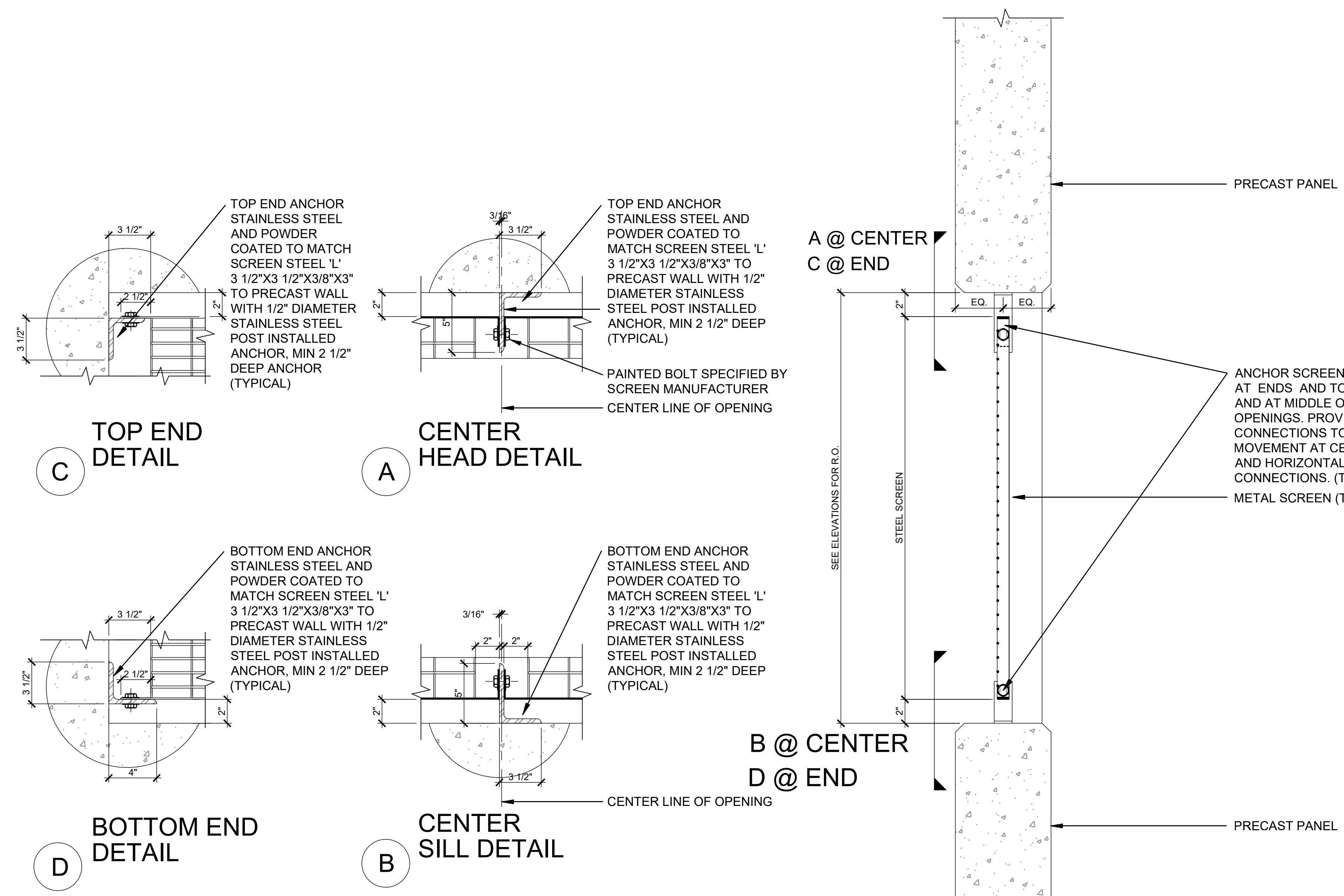


J:\31-008641-00-5TH_AND_WALNUT_ST_PSI\ACAD\05-ARCH\A502.DWG 2/8/2022 8:44:07 AM KOLTON, STEVE

**5TH AND WALNUT
COVERED LEVELS FACADE PANEL SCREENS
PARKING STRUCTURE**

MISSOURI

COLUMBIA



- NOTES:**
1. SEE ELEVATIONS FOR OPENING SIZES. (VERIFY IN FIELD).
 2. DETAILS OF SCREEN AND SCREEN CONNECTIONS ARE SHOWN FOR GENERAL CONCEPTS AND MINIMUM DESIGN REQUIREMENTS ONLY. SCREENS AND CONNECTIONS ARE DELEGATED PERFORMANCE DESIGN TO THE CONTRACTOR =
 3. USE EQUAL SIZE PANELS FOR LARGEST PANELS POSSIBLE.
 4. CONNECTION DESIGN SHALL INCLUDE FIELD ADJUSTABILITY TO AVOID EMBEDDED REINFORCEMENT WITHIN EXISTING BEAMS.
 5. CONTRACTOR SHALL USE NON-DESTRUCTIVE TESTING TO LOCATE EMBEDDED REPAIR WITHIN EXISTING CONCRETE PRIOR TO FABRICATION. NOTIFY ENGINEER OF CONFLICTS.
 6. CONTRACTOR SHALL PROVIDE SHOP DRAWINGS SEALED BY LICENSED DESIGN PROFESSIONAL ENGAGED BY THE CONTRACTOR OF CONNECTIONS AND SCREEN TO ENGINEER FOR REVIEW PRIOR TO FABRICATIONS.

1 WALL SECTION AT SCREEN

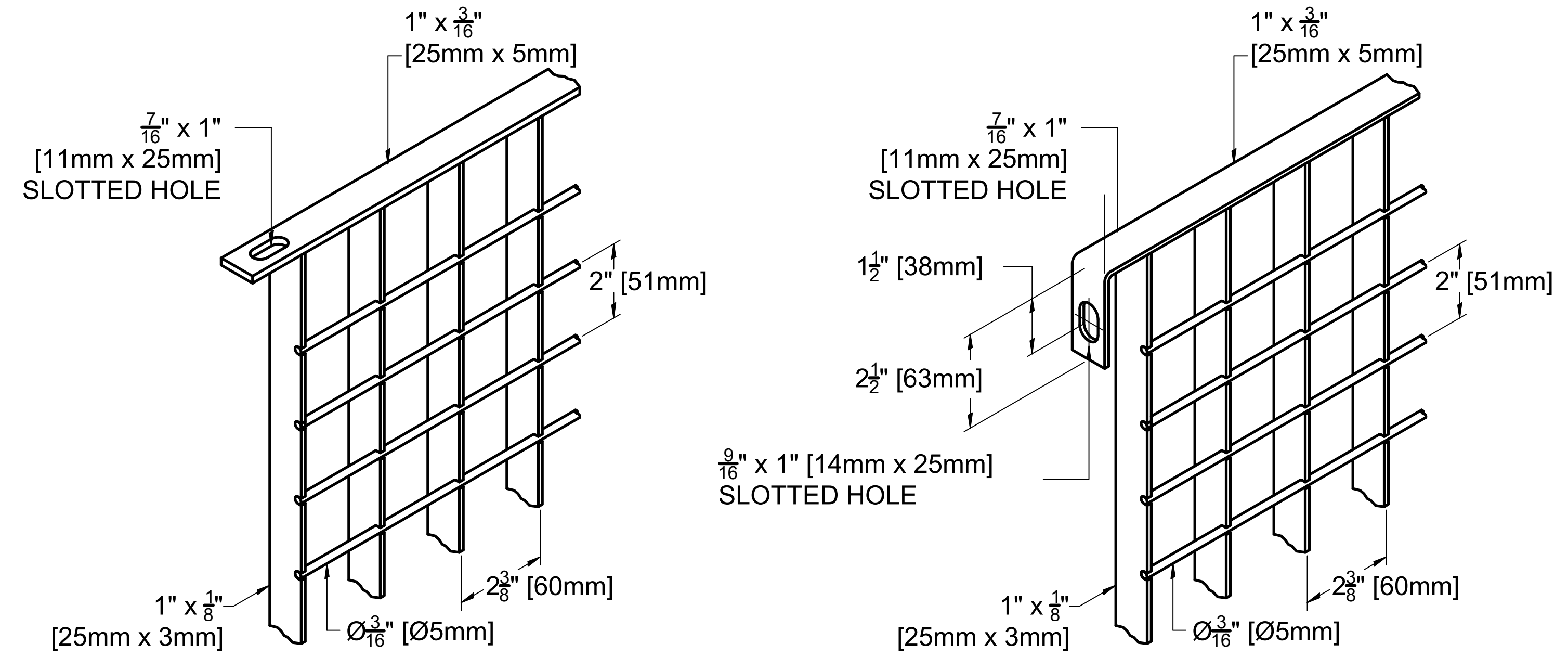
| MARK | DATE | DESCRIPTION |
|------|------|-------------|
| | | |
| | | |
| | | |

| | |
|-------------|--------------|
| PROJECT NO: | 31-008641.00 |
| DRAWN BY: | CWM |
| CHECKED BY: | DR |

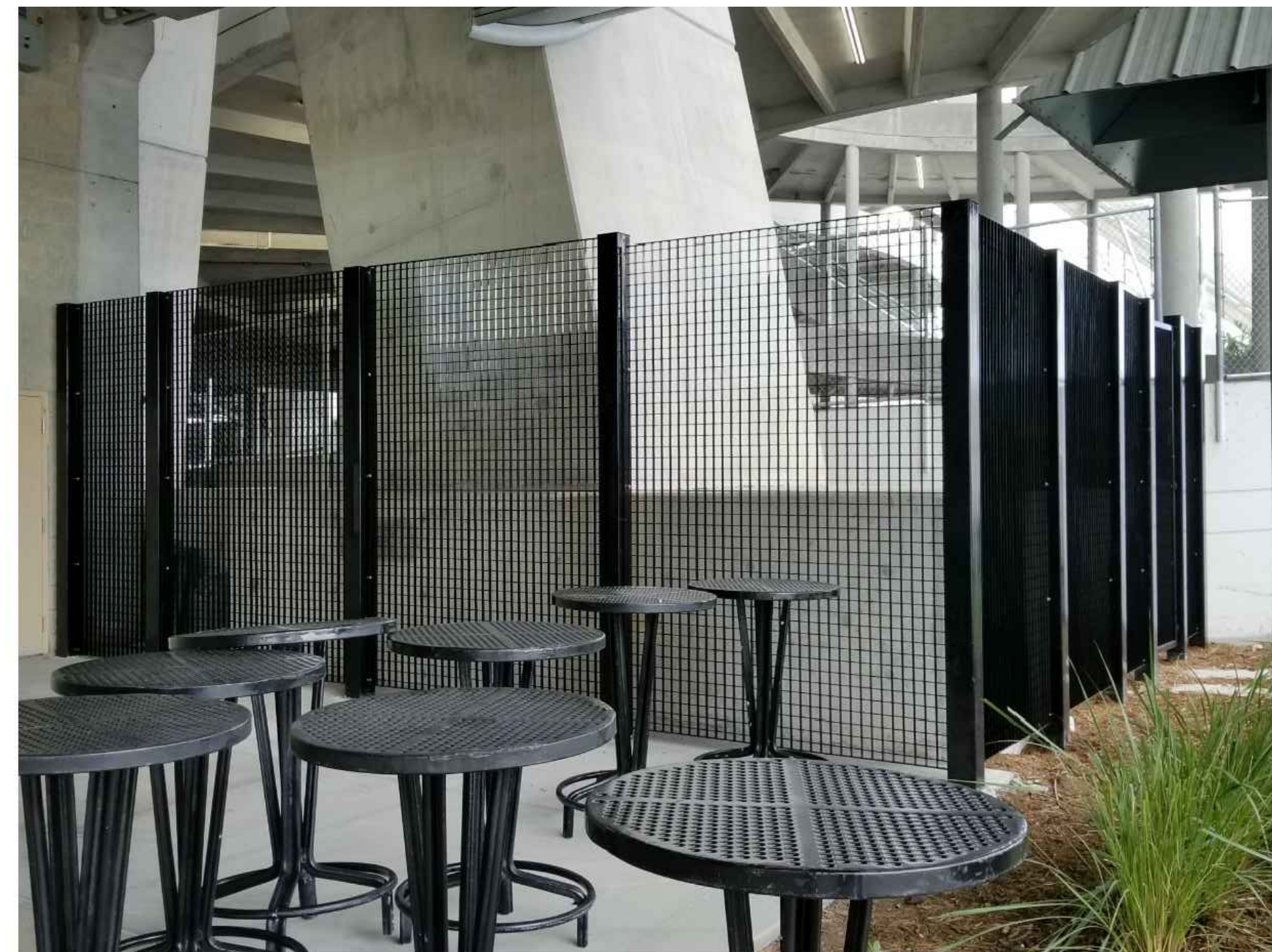
SHEET TITLE:
DETAILS

A502

TYPE 2 SCREEN - REFERENCE
(MFR MANUFACTURING CORP, INC. METALCO
PRODUCTS DIVISION - "GRIGLIATO B" OR EQUAL)



PANEL: DETAIL "GRIGLIATO "B" "
NOTE: END CONDITIONS VARY - SEE DETAILS



5TH AND WALNUT
COVERED LEVELS FACADE PANEL SCREENS
PARKING STRUCTURE

MISSOURI

COLUMBIA

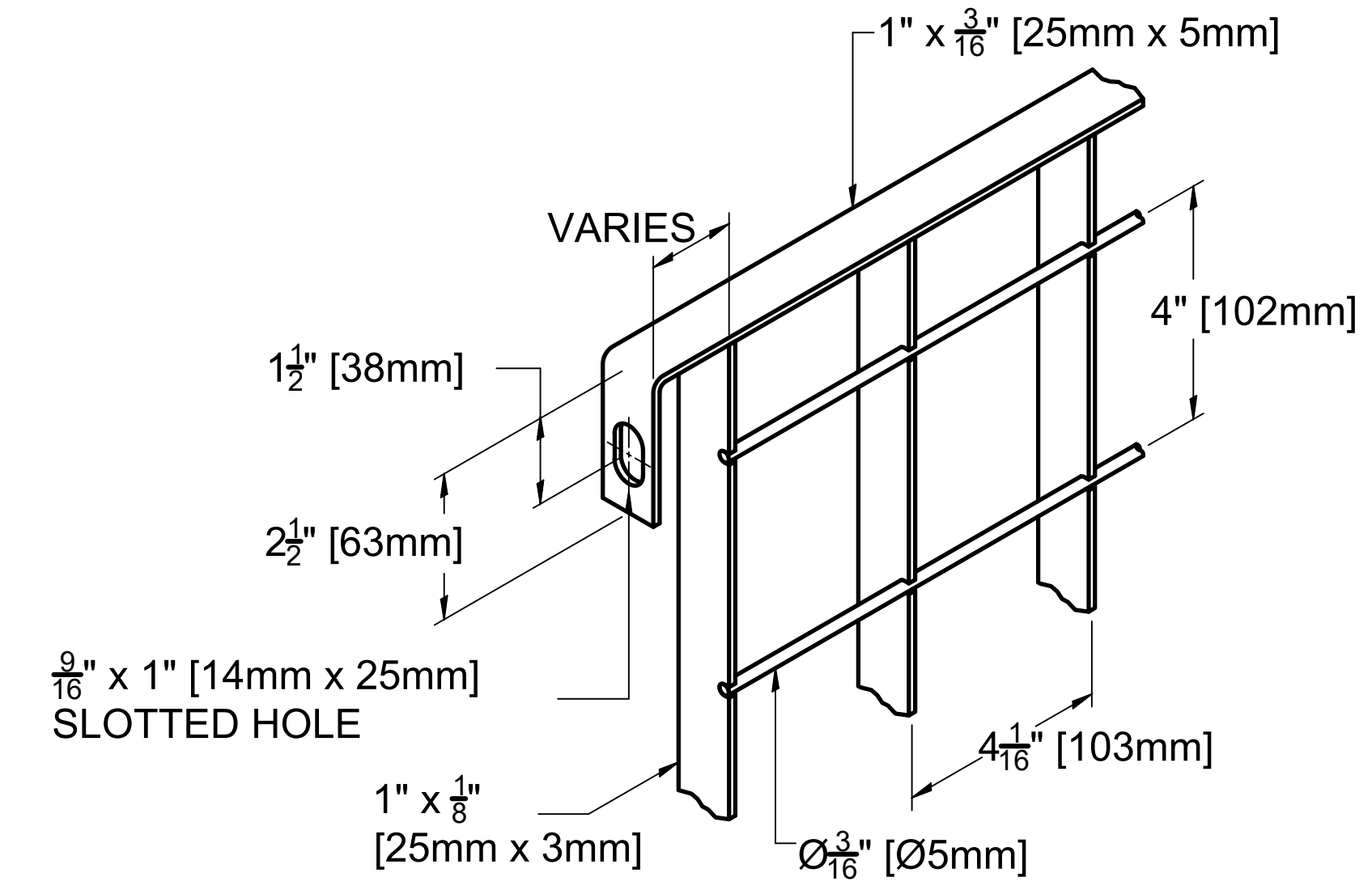
| MARK | DATE | DESCRIPTION |
|------|------|-------------|
| | | |
| | | |
| | | |

PROJECT NO: 31-008641.00
DRAWN BY: SPK
CHECKED BY: RAC

SHEET TITLE:
**TYPE 2 SCREEN
DETAILS**

A503

TYPE 3 SCREEN - REFERENCE
(MFR MANUFACTURING CORP, INC. METALCO
PRODUCTS DIVISION - "GRIGLIATO C" OR EQUAL)



PANEL: DETAIL "GRIGLIATO "C" "
NOTE: END CONDITIONS VARY - SEE DETAILS



5TH AND WALNUT
COVERED LEVELS FACADE PANEL SCREENS
PARKING STRUCTURE

COLUMBIA MISSOURI

| MARK | DATE | DESCRIPTION |
|------|------|-------------|
| | | |
| | | |
| | | |
| | | |

PROJECT NO: 31-008641.00
DRAWN BY: SPK
CHECKED BY: RAC
SHEET TITLE:
**TYPE 3 SCREEN
DETAILS**

A504

J:\31-008641-00-5TH_AND_WALNUT_ST_PSI\ACAD\05-ARCH\A504.DWG 2/8/2022 8:28:23 AM KOLTON, STEVE