

THE VILLAGE OF CHERRY HILL MAJOR AMENDMENT TO PD PLAN

LOT 3B - THE VILLAGE OF CHERRY HILL

FEBRUARY 5, 2024

PROPERTY DESCRIPTION

A TRACT OF LAND LOCATED IN THE SOUTHWEST QUARTER OF SECTION 21, TOWNSHIP 48 NORTH, RANGE 13 WEST, COLUMBIA, BOONE COUNTY, MISSOURI, BEING LOT 3B OF THE VILLAGE OF CHERRY HILL PLAT 3, RECORDED IN PLAT BOOK 33, PAGE 62, RECORDS OF BOONE COUNTY, AND CONTAINING 0.41 ACRES.

PROPERTY OWNER

COLUMBIA SOUTH REAL ESTATE, LLC
308 S. 9TH STREET
COLUMBIA, MO 65201

LANDSCAPE NOTE

- SITE AREA:
 - BUILDING 0.16 ACRES (39%)
 - PAVEMENT 0.02 ACRES (5%)
 - LANDSCAPED 0.23 ACRES (56%)
 - TOTAL 0.41 ACRES
- CLIMAX FOREST: THIS SITE DOES NOT CONTAIN CLIMAX FOREST AS DEFINED BY 29-4.4 OF THE UNIFIED DEVELOPMENT ORDINANCE. NO TREE PRESERVATION PLAN IS REQUIRED.
- SIGNIFICANT TREES: THIS SITE DOES NOT CONTAIN SIGNIFICANT TREES AS DEFINED BY 29-4.4 OF THE UNIFIED DEVELOPMENT ORDINANCE. NO TREE PRESERVATION PLAN IS REQUIRED.
- PARKING LOT LANDSCAPING: NO NEW PARKING AREA IS PROPOSED, THEREFORE NO ADDITIONAL TREES, SHRUBS, OR SCREENING IS REQUIRED FOR THE PARKING LOT PER 29-4.4 OF THE UNIFIED DEVELOPMENT CODE.
 - STREET TREES:
 - REQUIRED: 1 TREE/60 LF @ 206 LF OF FRONTAGE = 4 TREES
 - PROVIDED: 5 TREES
 - TREES SHALL BE A MIX OF MEDIUM AND LARGE TREES
 - PROPERTY EDGE BUFFERING: LEVEL 2 PROPERTY EDGE BUFFERING ON SOUTH PROPERTY LINE AS REQUIRED PER 29-4.4 OF THE UNIFIED DEVELOPMENT CODE.
 - 4 CATEGORIES OF MATERIAL
 - 1 TREE/200 SF * 800 SF = 4 TREES
 - 50% OF AREA COVERED WITH SHRUBS & FLOWERS



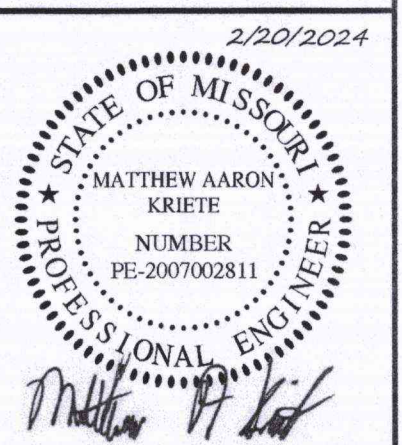
Engineering Surveys & Services
DELIVERING YOUR VISION™

1115 Fay Street, Columbia, MO 65201
873-448-2848
802 El Dorado Drive, Jefferson City, MO 65101
873-436-3303
1776 West Main Street, Sedalia, MO 65201
866-926-8818
www.es-inc.com
MO Engineering Corp. # 200405018



SCALE: 1" = 20'

THE VILLAGE OF CHERRY HILL - LOT 3B
CORONA ROAD
COLUMBIA, BOONE COUNTY, MISSOURI



MATTHEW A. KRIEE
PROFESSIONAL ENGINEER
PE-200702811

IF ORIGINAL SIGNATURE OR DIGITAL AUTHENTICATION IS NOT PRESENT THIS MEDIA SHOULD NOT BE CONSIDERED A CERTIFIED DOCUMENT.

Date

SEPTEMBER 7, 2023

Revised
 OCTOBER 4, 2023
 OCTOBER 16, 2023
 NOVEMBER 1, 2023
 NOVEMBER 6, 2023
 JANUARY 17, 2024
 FEBRUARY 5, 2024
 FEBRUARY 20, 2024

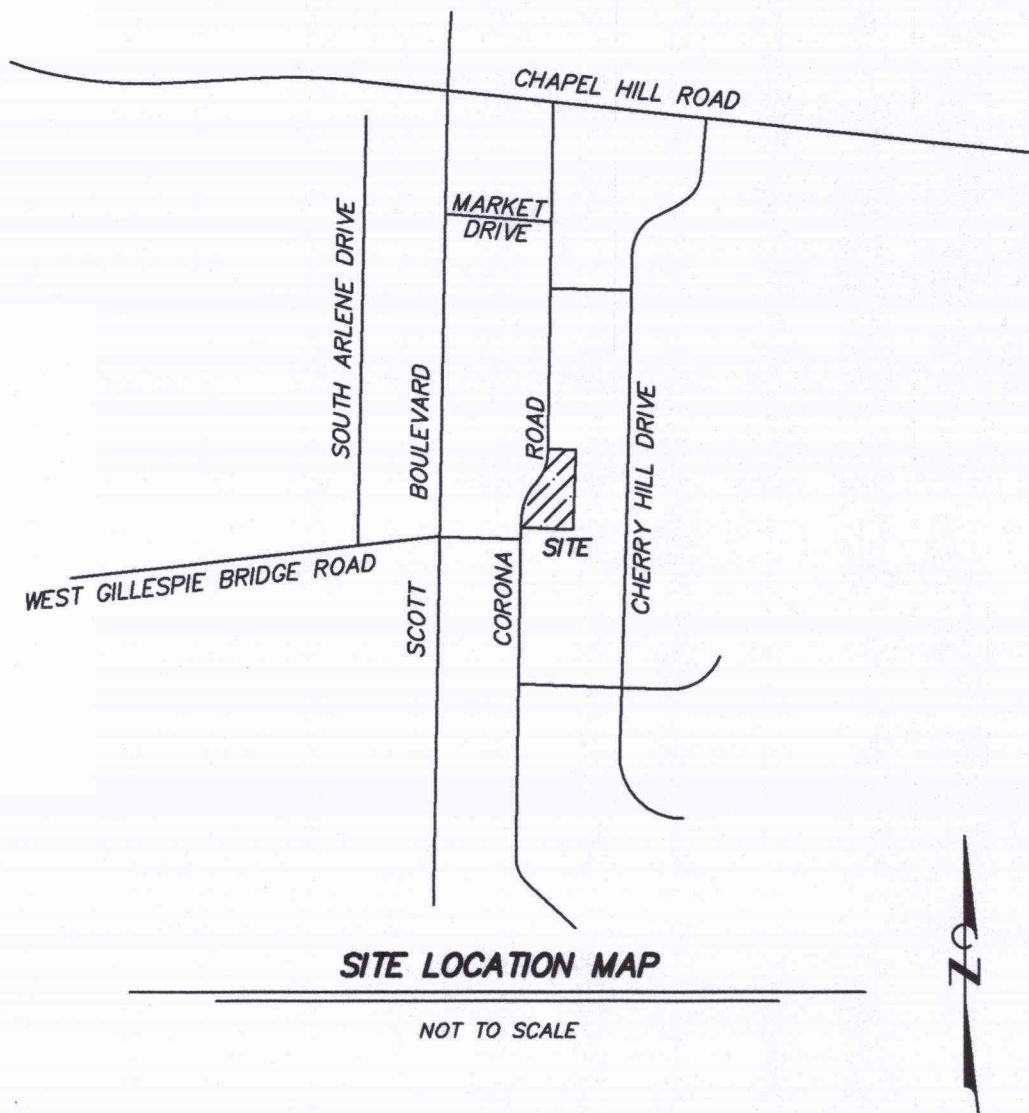
Design: MJS Drawn: MJS

PD PLAN

Sheet

C-1

ES&S PROJECT NO. 15845



ZONING NOTE

THIS PROPERTY IS ZONED "PD", PLANNED DEVELOPMENT

FLOOD PLAIN NOTE

THIS PROPERTY IS LOCATED IN ZONE "X" AREAS DETERMINED TO BE OUTSIDE THE 0.2% ANNUAL CHANCE FLOODPLAIN, AS SHOWN BY FLOOD INSURANCE RATE MAP NUMBER 29019C0267E, DATED APRIL 19, 2017.

STREAM BUFFER NOTE

THIS SITE DOES NOT CONTAIN STREAM BUFFERS AS DEFINED BY CHAPTER 12A OF CITY OF COLUMBIA ORDINANCES.

LEGEND

---	PROPERTY LINE
---	UNDERGROUND ELECTRIC LINE
---	UNDERGROUND TELECOMMUNICATIONS LINE
---	SANITARY SEWER LINE
---	STORM SEWER LINE
---	GAS LINE
---	WATER LINE
---	EXISTING CONTOUR
---	CORRUGATED METAL PIPE
---	FIRE HYDRANT
---	LIGHT STANDARD
---	POLYVINYL CHLORIDE PIPE
---	TELECOMMUNICATIONS PEDESTAL
---	CONCRETE SIDEWALK
---	BACK OF CURB
---	FIRE DEPARTMENT CONNECTION
---	LIGHT STANDARD
---	FINISH CONTOUR
---	PROPOSED SANITARY SEWER LINE
---	PROPOSED WATER LINE
---	PROPOSED GAS LINE
---	PROPOSED UNDERGROUND ELECTRIC
---	PROPOSED UNDERGROUND TELEPHONE
---	PROPOSED STORM SEWER
---	PROPOSED FIRE HYDRANT & VALVE
---	PROPOSED CONCRETE SIDEWALK
---	PROPOSED HEAVY DUTY CONCRETE
---	PROPOSED LARGE TREE
---	PROPOSED SMALL TREE
---	PROPOSED EVERGREEN SHRUB
---	PROPOSED DECIDUOUS SHRUB
---	PROPOSED PLANTING BED

PARKING NOTE (LOT 3B)

REQUIRED PARKING		
RESIDENTIAL		
ONE BEDROOM	12 UNITS AT 1.5 SPACE/ UNIT	= 18 SPACES
TWO BEDROOM	12 UNITS AT 2 SPACES/ UNIT	= 24 SPACES
VISITOR	1 SPACE/ 5 UNITS	= 5 SPACES
	REQUIRED = 47 SPACES	
	BIKE CREDIT = (4) SPACES	
	TOTAL REQUIRED = 43 SPACES	

STORM WATER NOTE

STORM WATER MANAGEMENT SHALL CONFORM TO THE VILLAGE OF CHERRY HILL C-P DEVELOPMENT PLAN, DATED DECEMBER 11, 2014.

SITE LIGHTING NOTE

EXISTING PARKING AREAS ON LOT 6 WILL BE ILLUMINATED BY 20-FT TALL FULL CUT-OFF POLE MOUNTED LIGHT. THIS LIGHT WILL PROVIDE MORE THAN 0.5 FC AT THE ADJACENT PROPERTY TO LOTS 3A, 3C, AND 3D. OTHERWISE, THIS LIGHT WILL COMPLY WITH UDC 29-4.5. ADDITIONAL PEDESTRIAN LEVEL LIGHTING MAY BE PROVIDED THAT COMPLIES WITH UDC 29-4.5.

EASEMENT VACATION NOTE

- THE EXISTING EASEMENT WITHIN THE BUILDING FOOTPRINT AS CROSSED HATCHED BELOW IS PROPOSED TO BE VACATED BY SEPARATE INSTRUMENT
- A PROPOSED 20' UTILITY EASEMENT IS PROPOSED TO BE DEDEDICATED BY SEPARATE INSTRUMENT ALONG THE SOUTHERN PROPERTY LINE OF LOT 3B
- ALL OTHER EXISTING EASMENTS ARE PROPOSED TO REMAIN.

ELECTRIC RELOCATION NOTE

EXISTING UNDERGROUND ELECTRIC WITHIN THE PROPOSED BUILDING FOOTPRINT SHALL BE DESIGNED BY WATER AND LIGHT. RELOCATION COSTS SHALL BE THE RESPONSIBILITY OF THE OWNER.

BUILDING NOTE

- ALL SIDE OF THE BUILDING FACADE SHALL BE OF CONSISTENT MATERIAL
- THE BUILDING FACADE, EXCLUSIVE OF FENESTRATIONS, SHALL BE PREDOMINATELY BRICK AND/OR STONE WITH NO MORE THAN 10% CEMENT BOARD SIDING.

PARKING NOTE (VILLAGE OF CHERRY HILL)

TOTAL AREA OF RETAIL = 43,175 SQ. FT.
 RETAIL/OFFICE AREA = 17,400 SQ. FT.
 TOTAL AREA OF OFFICE = 30,048 SQ. FT.
 TOTAL NUMBER OF RESIDENTIAL UNITS = 112
 TOTAL PARKING REQUIRED = 657 SPACES
 OFF-STREET PARKING PROVIDED = 494 SPACES
 ON-STREET PARKING PROVIDED = 135 SPACES
 TOTAL PARKING PROVIDED = 630 SPACES
 INCLUDING 29 ACCESSIBLE SPACES

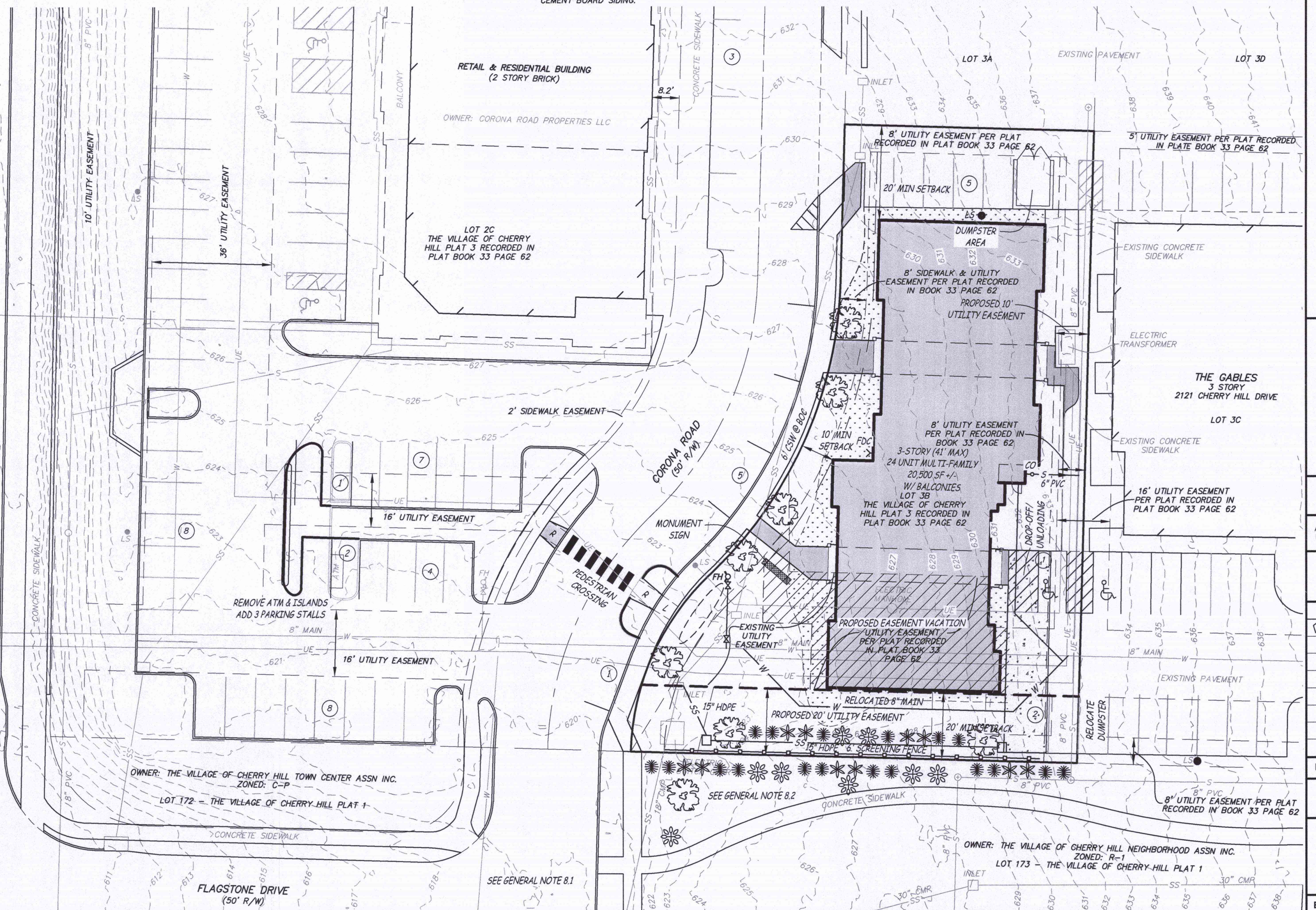
LOT NO.	LOT SIZE	BUILDING HEIGHT	NO. OF FLOORS	AREA OF FLOORS	USAGE BY FLOORS	PARKING REQUIRED PER FLOOR	TOTAL BUILDING AREA	TOTAL REQUIRED PARKING FOR BUILDING	COMMENTS
1A	18,090 S.F.	30 FT.	2	4,000 S.F.	1ST OFFICE/BANK 2ND OFFICE	16 SPACES	8,000 S.F.	32 SPACES	DRIVE THRU FOR BANKING FACILITY
1B	12,430 S.F.	30 FT.	2	3,500 S.F.	1ST OFFICE 2ND OFFICE	14 SPACES	7,000 S.F.	28 SPACES	
1	17,860 S.F.	45 FT.	4	8-8,800 S.F. 1ST-8,800 S.F. 2ND-8,220 S.F. 3RD-8,220 S.F.	BASEMENT-OFFICE/RETAIL 1ST-OFFICE/RETAIL 2ND-RESIDENTIAL (8 UNITS) 3RD-RESIDENTIAL (8 UNITS)	28.3 SPACES 28.7 SPACES 15 SPACES 15 SPACES	33,840 S.F. INCLUDING BASEMENT	92 SPACES	THIS AMENDMENT REDUCED NUMBER OF PARKING SPACES PROVIDED BY 28 SPACES
1E	7,250 S.F.	40 FT.	3	2,600 S.F.	BASEMENT 1,400 S.F. OFFICE 1ST OFFICE 2ND OFFICE	5.6 SPACES 0.6 SPACES 10.4 SPACES	7,800 S.F.	27 SPACES	
1F	36,040 S.F.	40 FT.	3	6,300 S.F.	COMMON AREA	0 SPACES	18,900 S.F.	0 SPACES	COMMON AREA
2A	26,640 S.F.	40 FT.	3	6,300 S.F.	BASEMENT-PARKING 12 SPACES 1ST RETAIL 2ND OFFICE	0 SPACES 42 SPACES 28.2 SPACES	18,900 S.F. INCLUDING BASEMENT	67.2 SPACES	
2B	1.02 AC.	45 FT.	3	11,200 S.F.	BASEMENT (12 SPACES) 1ST RETAIL 2ND RESIDENTIAL (12 UNITS)	0 SPACES 24.67 SPACES 24 SPACES	33,600 S.F. INCLUDING BASEMENT	98.77 SPACES	(2ND FLOOR RES. UNITS ARE TWO STORY)
2C	1.23 AC.	40 FT.	2	10,030 S.F.	1ST RETAIL 2ND RESIDENTIAL (12 UNITS)	50 SPACES 21 SPACES	20,060 S.F.	71 SPACES	
3A	7,500 S.F.	40 FT.	2	3,300 S.F.	1ST RETAIL 2ND RESIDENTIAL (4 UNITS)	22 SPACES 8 SPACES	6,600 S.F.	30 SPACES	
3B	18,000 S.F.	41 FT.	3	6,833 S.F. 6,833 S.F. 6,833 S.F.	1ST RESIDENTIAL (8 UNITS) 2ND RESIDENTIAL (8 UNITS) 3RD RESIDENTIAL (8 UNITS)	14.33 PER FLOOR 14.33 PER FLOOR 14.33 PER FLOOR	20,500 S.F.	43 SPACES	
3C	14,180 S.F.	40 FT.	3	5,000 S.F.	TERRACE RESIDENTIAL (4 UNITS) 1ST RESIDENTIAL (4 UNITS) 2ND RESIDENTIAL (4 UNITS)	8 SPACES 8 SPACES 8 SPACES	15,000 S.F.	24 SPACES	
3D	7,500 S.F.	30 FT.	2	3,300 S.F. 3,800 S.F.	1ST RETAIL 2ND RESIDENTIAL (4 UNITS)	22 SPACES 8 SPACES	7,200 S.F.	30 SPACES	
4A	6,250 S.F.	30 FT.	2	3,800 S.F.	1ST RETAIL 2ND RESIDENTIAL (4 UNITS)	25.33 SPACES 8 SPACES	7,600 S.F.	33.33 SPACES	
501	27,350 S.F.	30 FT.	2	7,300 S.F.	1ST RESIDENTIAL (5 UNITS) 2ND RESIDENTIAL (6 UNITS)	10 SPACES 12 SPACES	14,600 S.F.	22 SPACES	
502	14,775 S.F.	40 FT.	2	N/A	RESIDENTIAL (8 UNITS)	18 SPACES	N/A	18 SPACES	
40	15,225 S.F.	30 FT.	2	N/A	RESIDENTIAL (5 UNITS)	10 SPACES	N/A	10 SPACES	2 PARKING SPACES IN TWO CAR GARAGE PER UNIT
4E	15,365 S.F.	30 FT.	2	N/A	RESIDENTIAL (5 UNITS)	10 SPACES	N/A	10 SPACES	2 PARKING SPACES IN TWO CAR GARAGE PER UNIT
4F	10,320 S.F.	30 FT.	2	N/A	1ST 875 S.F. RETAIL 2ND RESIDENTIAL	5.6 PER UNIT 2 PER UNIT	N/A	23.40 SPACES	2 PARKING SPACES IN TWO CAR GARAGE PER UNIT
5A	20,940 S.F.	40 FT.	3	6,924 S.F.	BASEMENT-PARKING 24 SPACES 1ST OFFICE 2ND OFFICE	0 SPACES 27.7 SPACES 27.7 SPACES	20,772 S.F.	55.40 SPACES	
5B	18,340 S.F.	30 FT.	3	N/A	RESIDENTIAL (5 UNITS)	10 SPACES	N/A	10 SPACES	2 PARKING SPACES IN TWO CAR GARAGE PER UNIT
5C	30,030 S.F.	N/A	N/A	N/A	N/A	N/A	N/A	N/A	COMMON AREA
6	30,030 S.F.	N/A	N/A	N/A	N/A	N/A	N/A	N/A	COMMON AREA
7	31,210 S.F.	N/A	N/A	N/A	N/A	N/A	N/A	N/A	COMMON AREA
142A	11,189 S.F.	16 FT.	1	900 S.F. 1,300 S.F.	REST ROOM/CONCESSION POOL	9 SPACES 13.5 SPACES	N/A	22.50 SPACES	POOL COMMON AREA

GENERAL NOTES

- BUILDINGS SHALL BE ALLOWED BUILDING PROTRUSIONS AND 7 FOOT WIDE BALCONIES AND AWNINGS OVERHANGING THE SIDEWALK AND SIDEWALK EASEMENT. THESE PROTRUSIONS AND BALCONIES/AWNINGS SHALL BE BUILT TO CITY CODES EXCEPT FOR CODES REFERRING TO BUILDING IN EASEMENTS.
- BIKE RACKS AND FENCES SHALL BE ALLOWED WITHIN THE SIDEWALK AND UTILITY EASEMENTS.
- THE PD PLAN REVISION APPLIES ONLY TO LOT 3B.
- NO PLANTING ACTION REQUIRED. NO RIGHT-OF-WAY PROPOSED.
- THE DEVELOPER RESERVES THE RIGHT OF WIDEN SIDEWALKS UP TO THE CURB IN AREAS TO PROVIDE ACCESS TO THE CURB AND PROVIDE ADDITIONAL OUTDOOR PAVED SPACE.
- THE TOWN CENTER DECLARATION RECORDED IN BOOK 1592 PAGE 354 - SECTION 5.1 PROVIDE ALL OWNERS WITHIN THE VILLAGE OF CHERRY HILL A NON-EXCLUSIVE EASEMENT FOR THE APPROPRIATE AND INTENDED USE OF COMMONS INCLUDING PARKING, WALKWAYS, AMENITIES, ETC.
- SITE LIGHTING: ALL NEW SITE LIGHTING SHALL BE COMPLETED IN CONFORMANCE WITH 29-4.5 OF UNIFIED DEVELOPMENT CODE.
- A PRIVATE AGREEMENT BETWEEN THE VILLAGE OF CHERRY HILL HOME OWNERS ASSOCIATION AND THE OWNER OF LOT 3B REQUIRES THE FOLLOWING:
 - RESIDENTS OF THE LOT 3B DWELLING UNITS SHALL NOT UTILIZE ON-STREET PARKING SOUTH OF FLAGSTONE DRIVE.
 - THE DEVELOPER OF LOT 3B SHALL REMOVE LOCUST TREES ON LOT 173 AND INSTALL ADDITIONAL TREES AND SHRUBS ON LOT 173.

SIGN NOTE

SIGNAGE SHALL CONFORM TO 29-4.6 OF THE UNIFIED DEVELOPMENT CODE AND WILL CONSIST OF ONE MONUMENT SIGN.



APPROVED BY THE PLANNING AND ZONING COMMISSION,

COLUMBIA, MISSOURI, ON February 22, 2024

SHARON GEUEA JONES, CHAIRPERSON

ACCEPTED BY ORDINANCE OF THE CITY COUNCIL OF

COLUMBIA, MISSOURI, THIS 18th DAY OF March, 2024

BARBARA BUFFALO, MAYOR

SHEELA AMIN, CITY CLERK