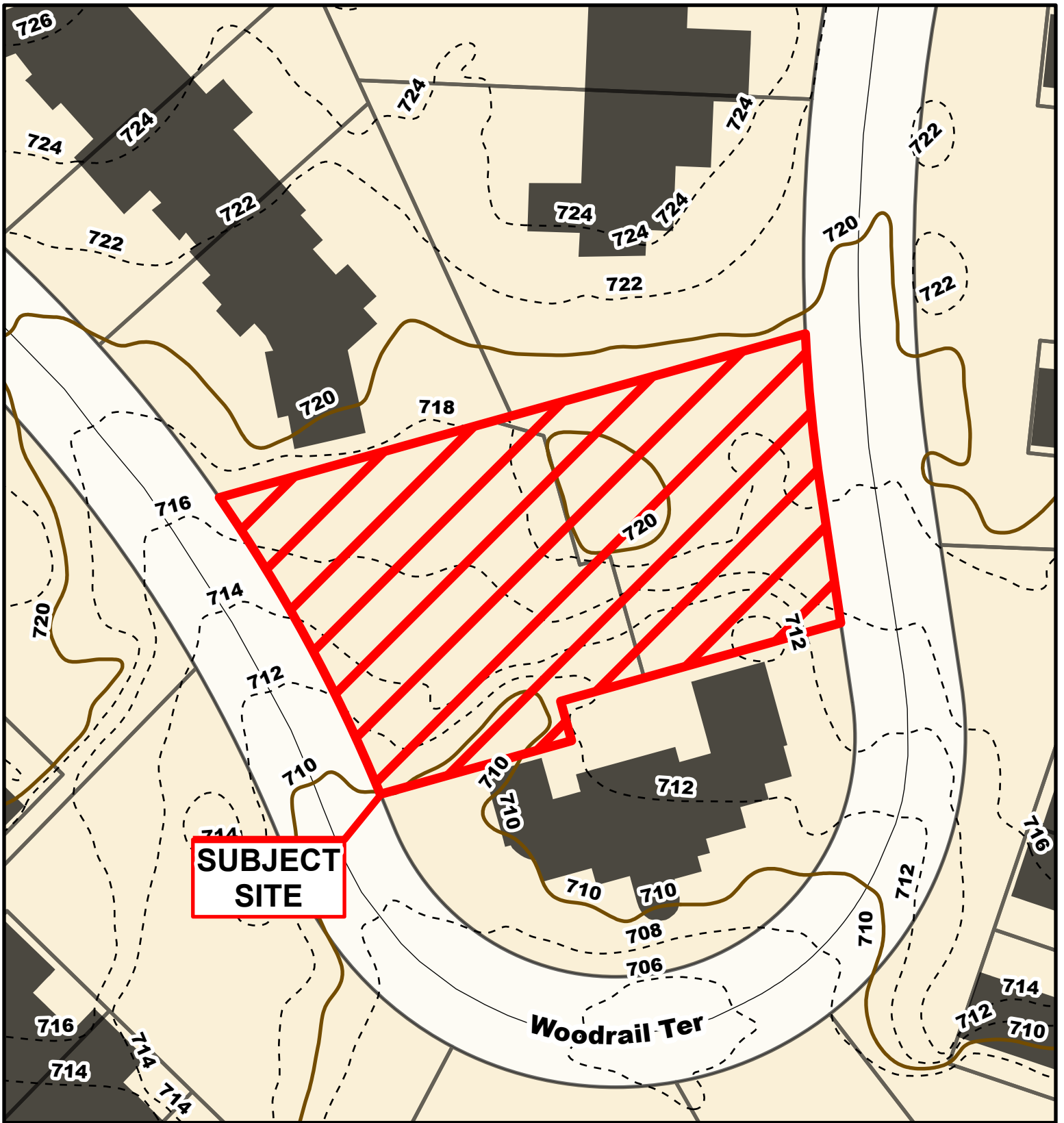


Case # 222-2023 - Lots 14B & C Woodrail Subdivision Plat 3 PD Plan



City Zoning Parcels



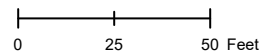


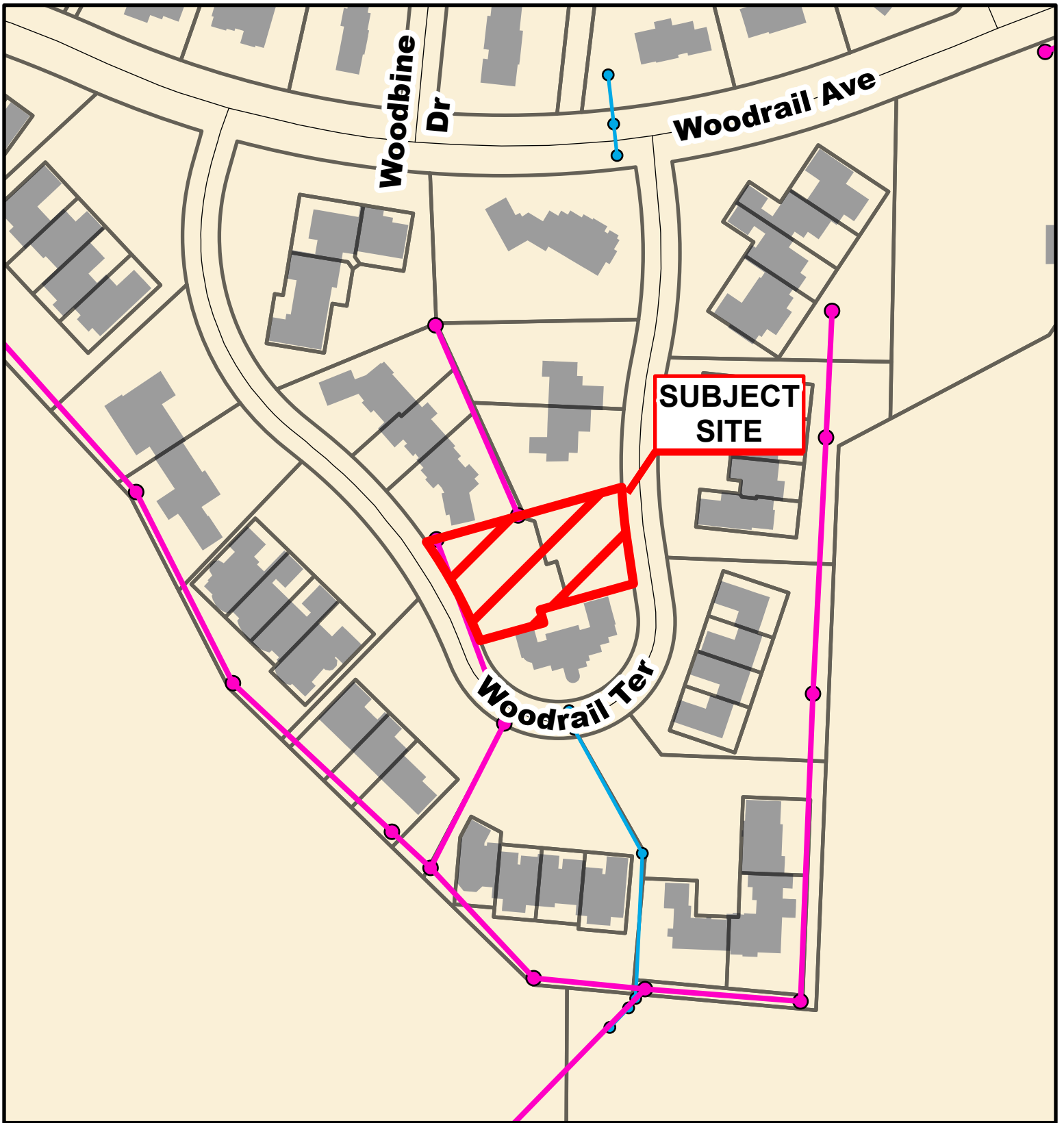
Case # 222-2023 - Lots 14B & C Woodrail Subdivision Plat 3 PD Plan



Parcel Data Source: Boone County Assessor
Created by The City of Columbia - Community Development Department

- 10 Foot Contour Lines
- 2 Foot Contour Lines
- Parcels





Case # 222-2023 - Lots 14B & C Woodrail Subdivision Plat 3 PD Plan



- City Sanitary Line
- City Storm Lines
- Parcels

