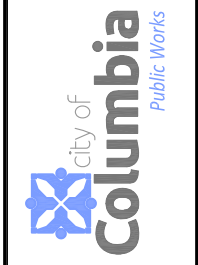


c:\cadd\proj\sidewalk\oakland-gravel-blue-ridge-to-smiley\oakland-city-topo & aerial.dwg

No.	Date	By	Revision

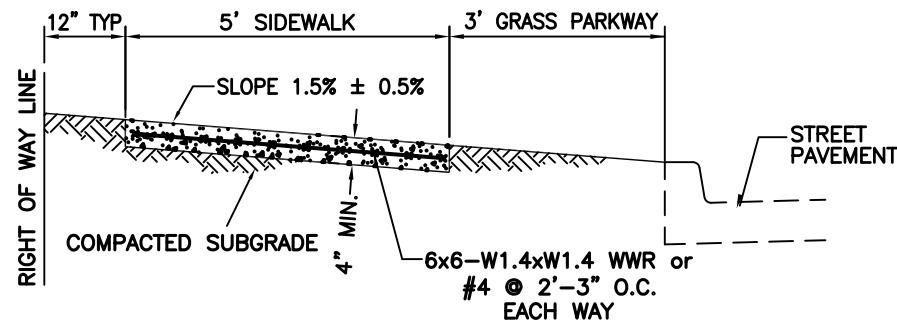
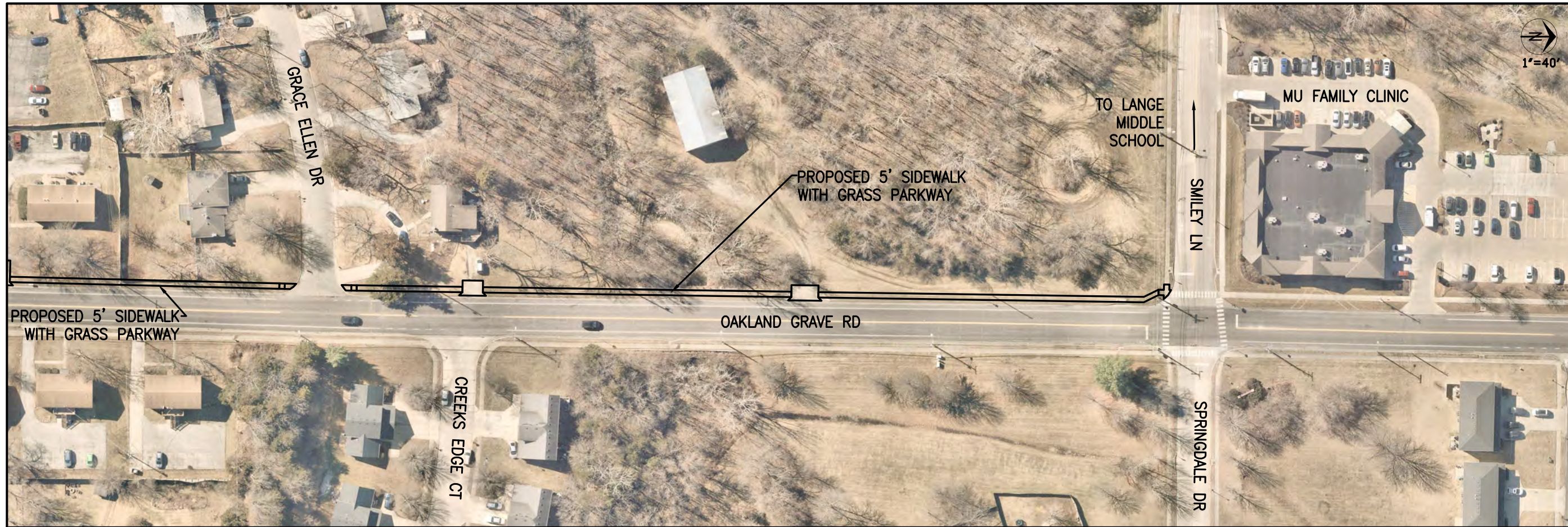
**OAKLAND GRAVEL RD SIDEWALK
BLUE RIDGE TO SMILEY
PROPOSED SIDEWALK LAYOUT 1**

Mission
Provide safe, sustainable infrastructure that promotes positive communities.
701 East Broadway
P.O. Box 8015
Columbia, MO 65205
(573) 875-2489



Shane Steven Cresch
Registered Professional Engineer
PE-2037011081

File No. _____
Scale: 1"=40'
Date: 07/18/2023
Des. A.A.A.
Dwn. _____
Chk. _____



SIDEWALK WITH GRASS PARKWAY

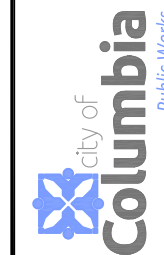
(NOT TO SCALE)

NOTE:

1. SIDEWALK SHALL BE 4" THICK MoDOT PAVEMENT CONCRETE.
2. INSTALL 1/2" EXPANSION JOINTS AT INTERSECTIONS, RAMPS, STRUCTURES, DRIVEWAY APPROACHES, OR EVERY 100'.
3. INSTALL TRANSVERSE SAW JOINTS AT SPACING EQUAL TO SIDEWALK WIDTH.
4. STANDARD SIDEWALK PLACEMENT IS 12" FROM RIGHT OF WAY LINE.
5. NO STEEL TO BE PLACED THROUGH EXPANSION JOINT.
6. SIDEWALK CROSS SLOPE SHALL NOT EXCEED 2.00%.
7. WWR OR REBAR SHALL BE ACCURATELY PLACED AND FIRMLY HELD IN PLACE DURING CONCRETE PLACEMENT BY APPROVED METHODS, SEE SECTION 238.9.

Mission
Provides safe, sustainable infrastructure that promotes positive communities.

701 East Broadway
P.O. Box 6015
Columbia, MO 65205
(573) 875-2489



Shane Steven Creech
Registered Professional Engineer
PE-2007011061

File No.
Scale: 1"=40'
Date: 07/18/2023
Des. A.A.A.
Dwn.
Chk.

Sheet
2 of 2

**OAKLAND GRAVEL RD SIDEWALK
BLUE RIDGE TO SMILEY
PROPOSED SIDEWALK LAYOUT 2**

No.	Date	By	Revision