

Case # 159-2024 - 1003 E. Brown School Road

Preliminary Plat



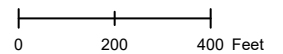
- Columbia City Limit
- City Zoning
- City Property
- Parcels

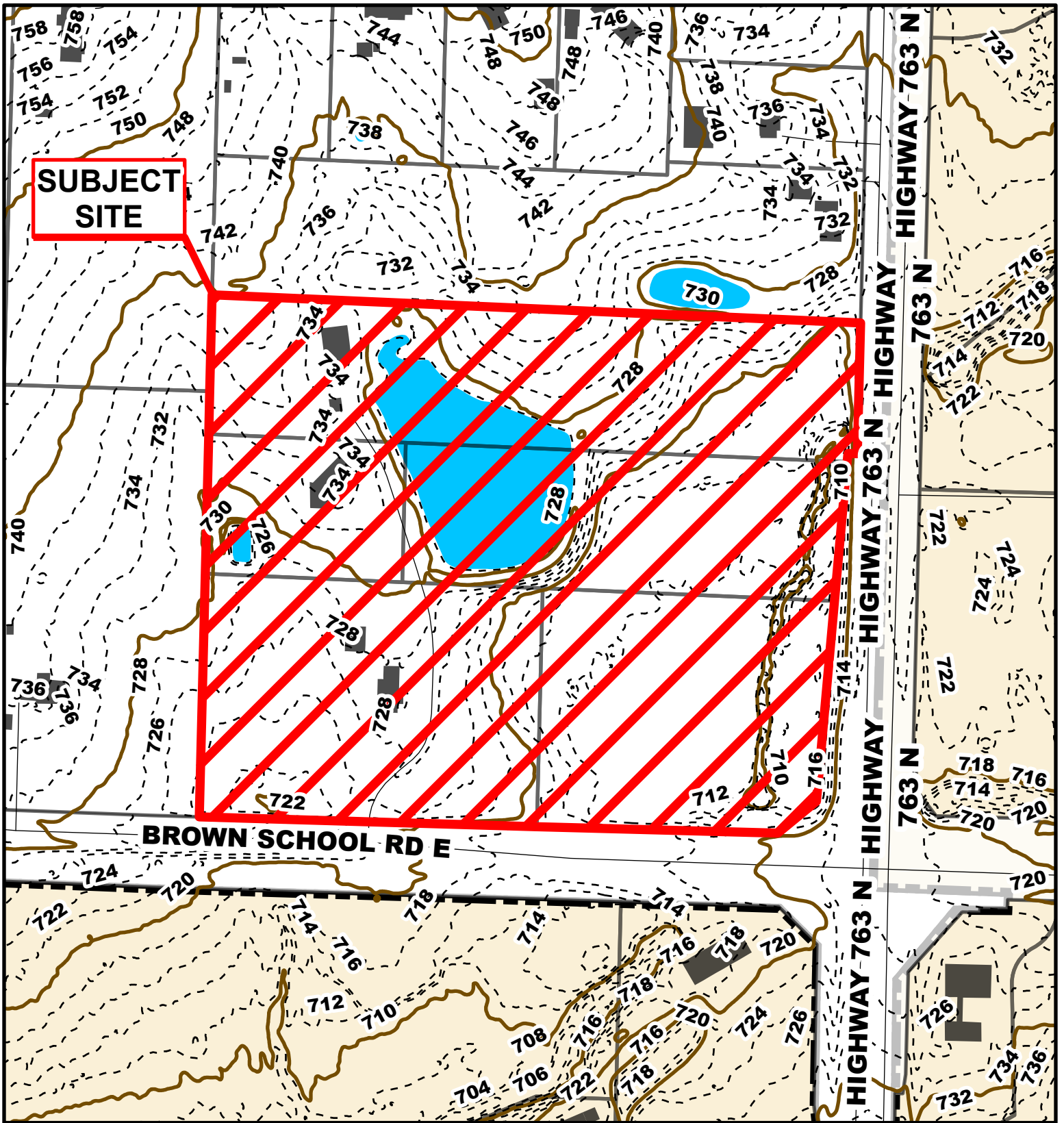


Parcel Data Source: Boone County Assessor

Created by The City of Columbia - Community Development Department

2022 Imagery: NearMap





Case # 159-2024 - 1003 E. Brown School Road

Preliminary Plat

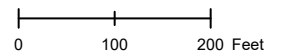


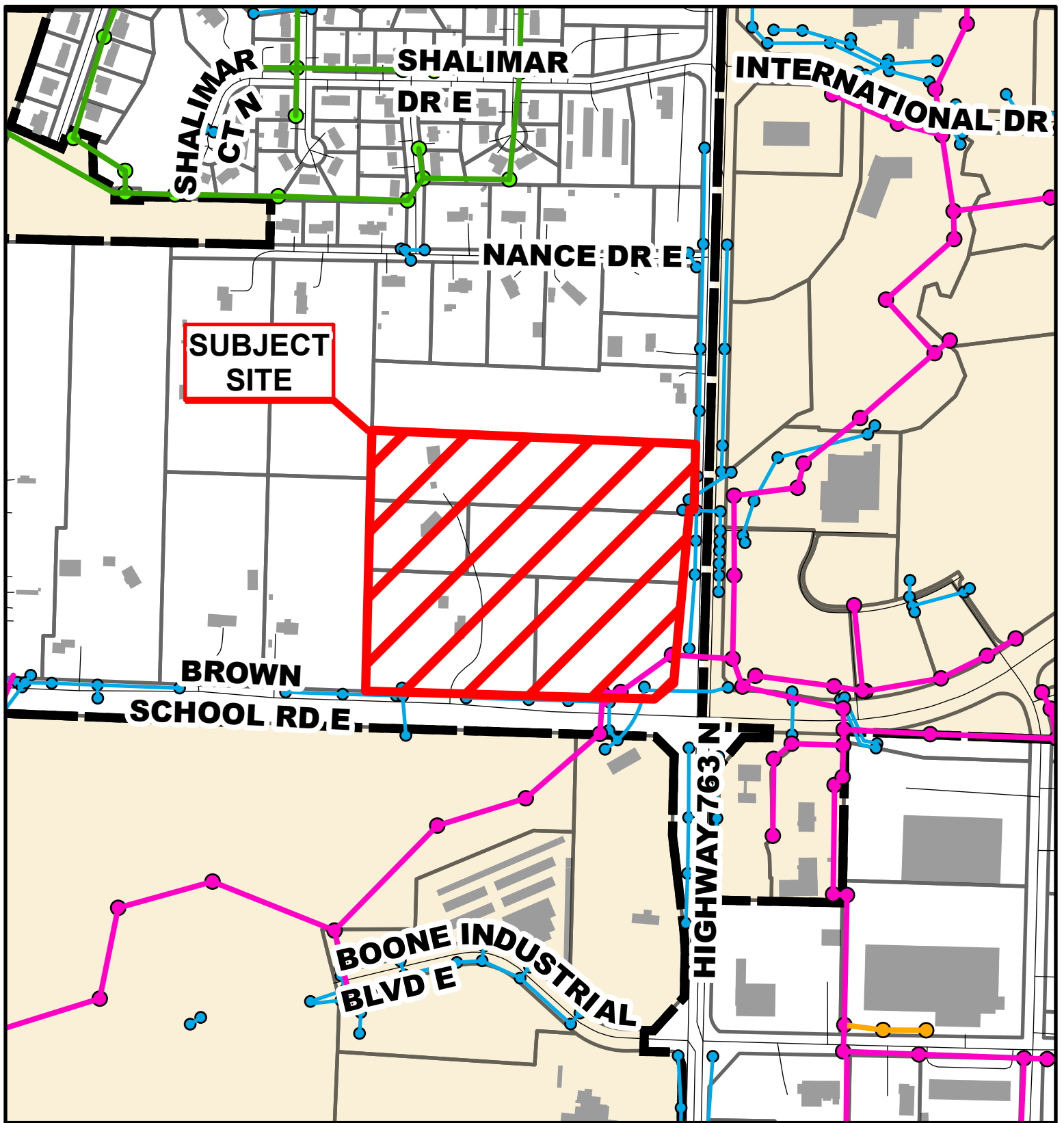
- 10 Foot Contour Lines
- - - 2 Foot Contour Lines
- City of Columbia
- Parcels



Parcel Data Source: Boone County Assessor

Created by The City of Columbia - Community Development Department





Case # 159-2024 - 1003 E. Brown School Road

Preliminary Plat



- City Sanitary Line
- City Storm Lines
- BCRSD Sanitary Line
- Parcels
- Private Sanitary Line
- Columbia City Limit

