

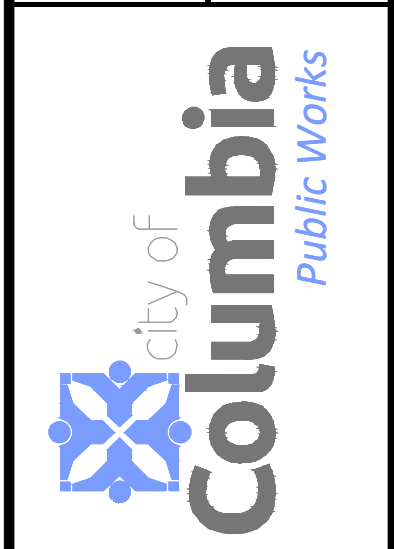
c:\caddpro\traffic\calming\hulen_dr_traffic_calming.dwg

No.	Date	By	Revision

HULEN DRIVE TRAFFIC CALMING PLAN

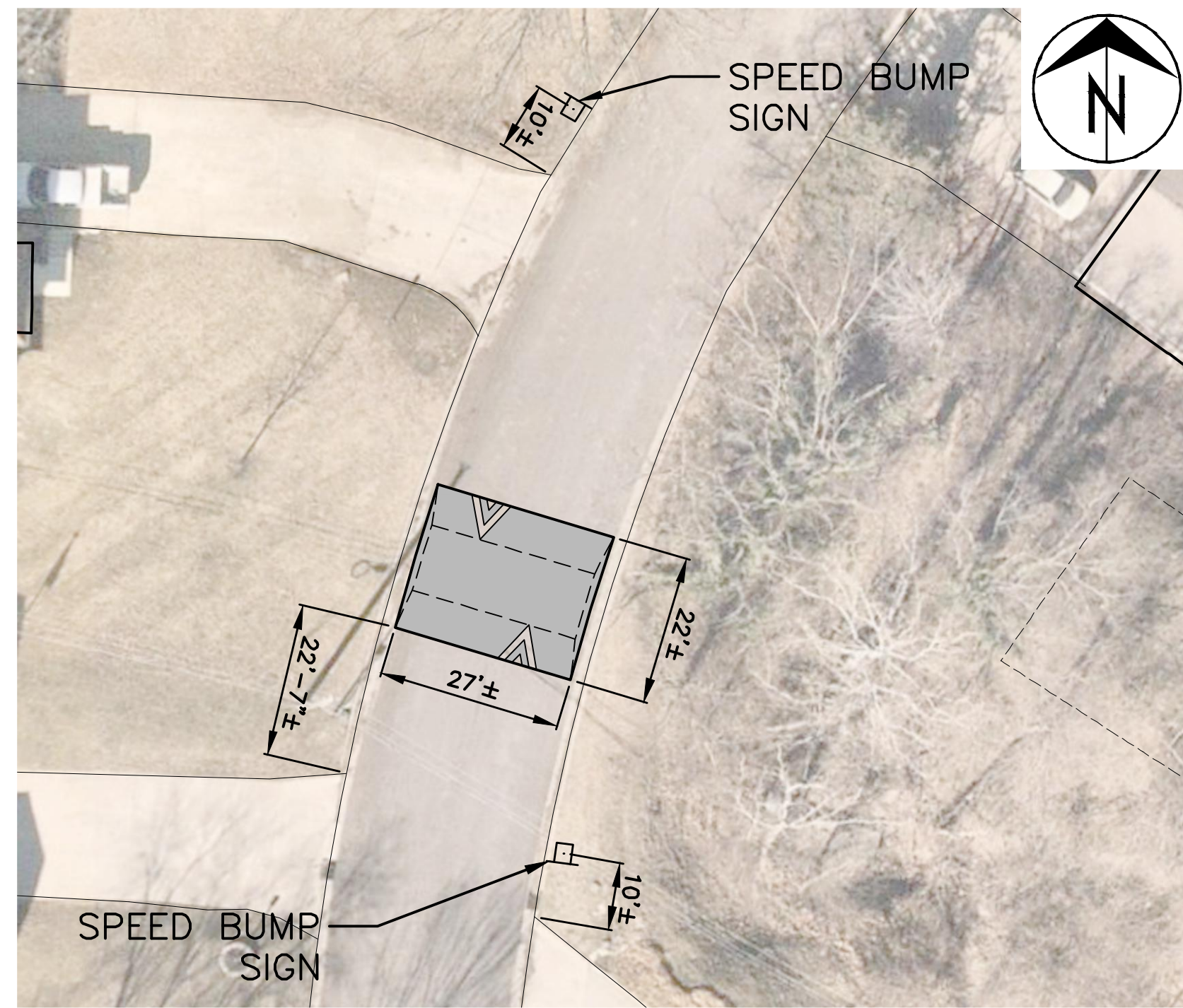
Mission
Provide safe, sustainable infrastructure that promotes positive communities.

701 East Broadway
P.O. Box 6015
Columbia, MO 65205
(573) 875-2489

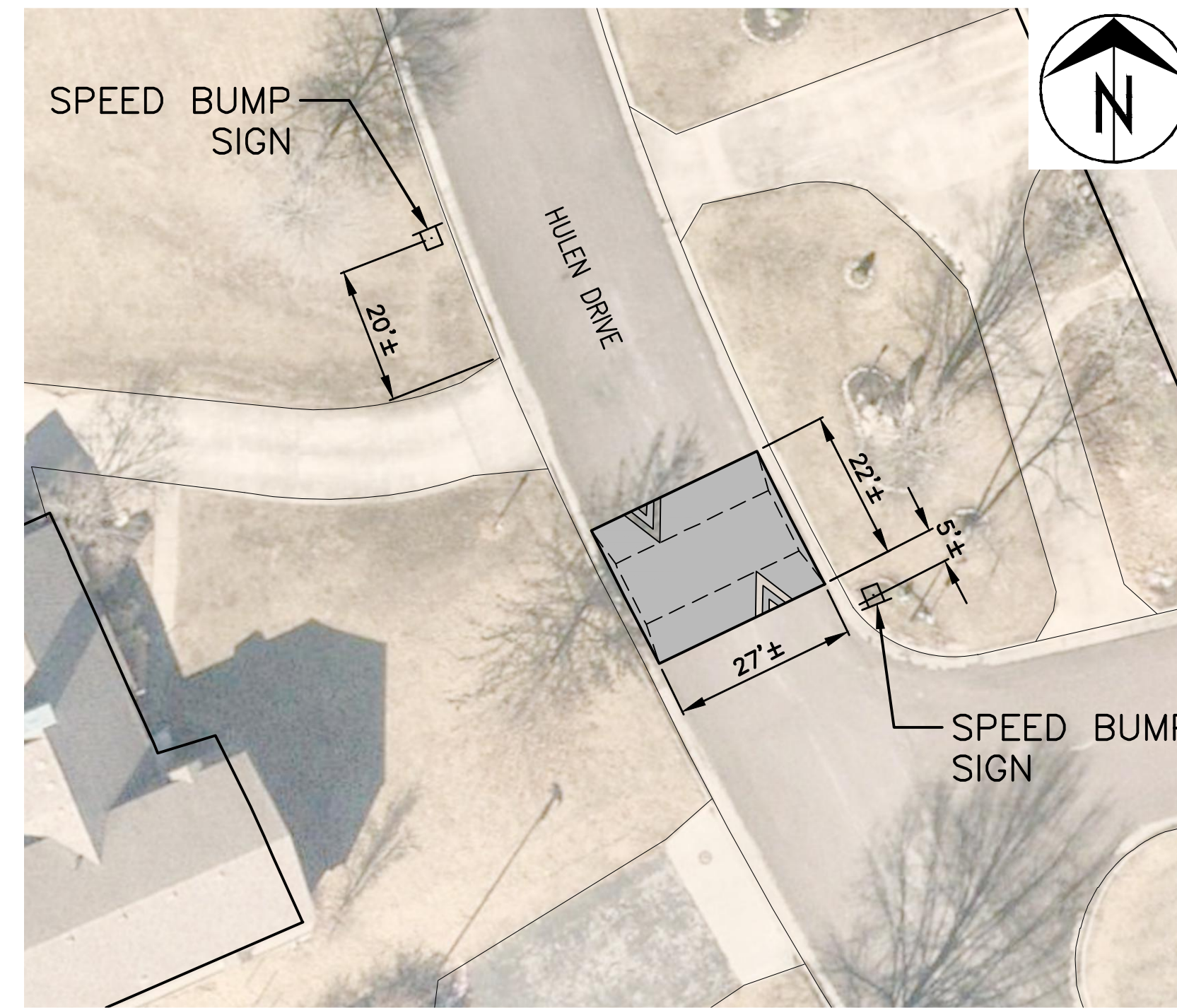


Shane Steven Crech
Registered Professional Engineer
PE-2007011061

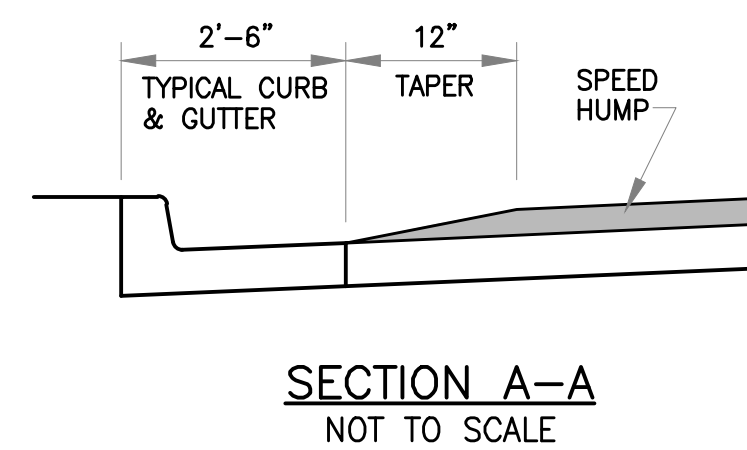
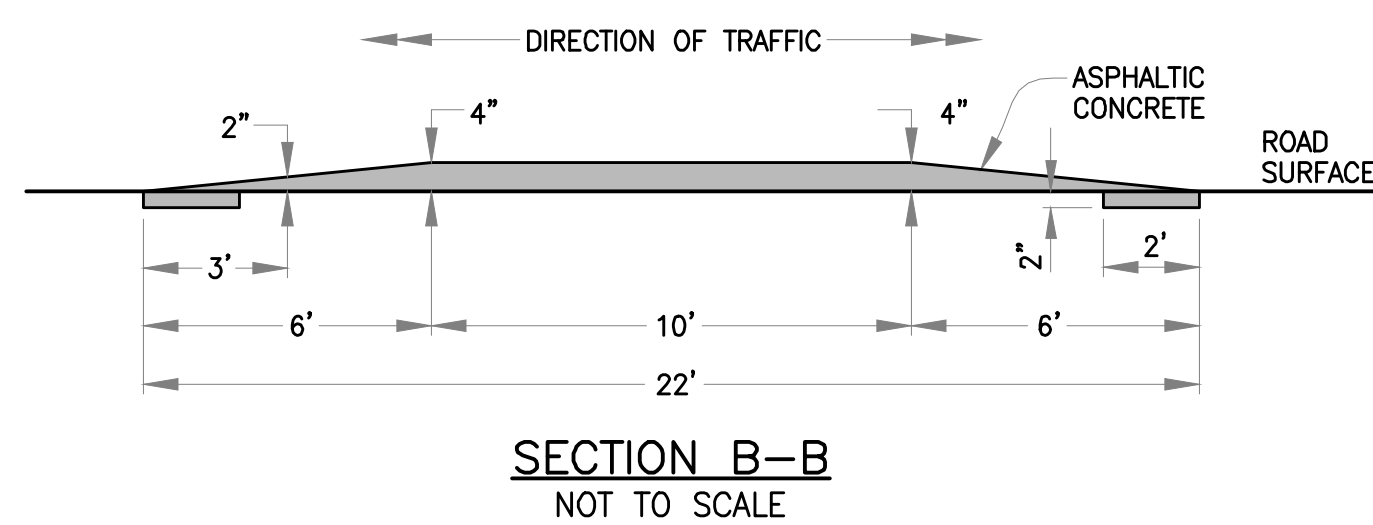
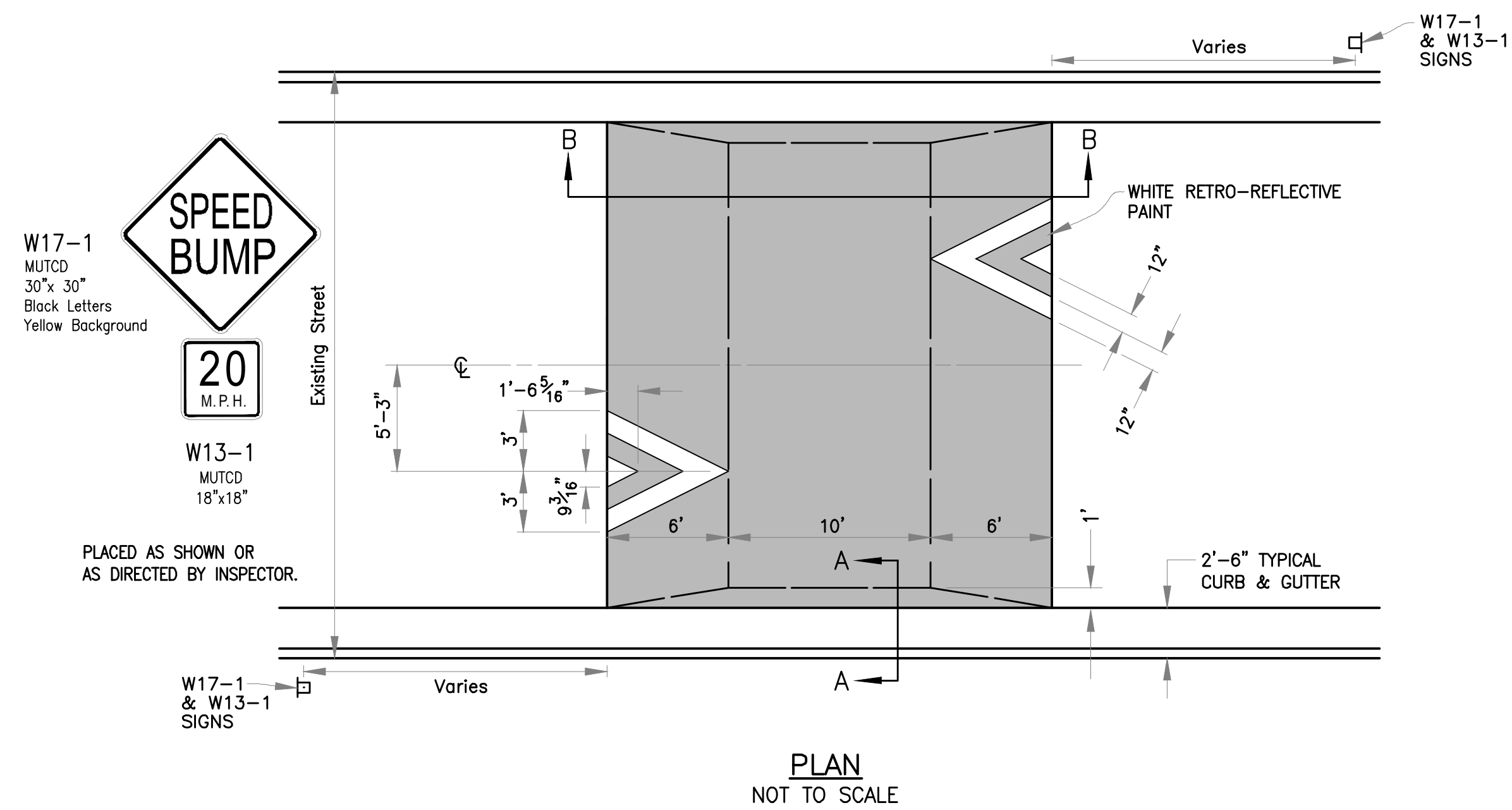
File No.
Scale: 1"=30'
Date: 10/26/2023
Des. A.S.B.
Dwn. S.A.W.
Chk. J.D.R.



907 HULEN DRIVE
1" = 20'



1104 HULEN DRIVE
1" = 20'



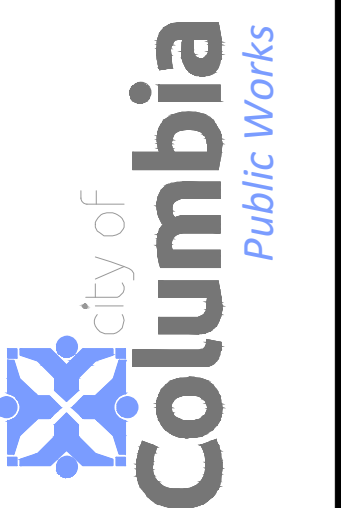
SPEED HUMP
NOT TO SCALE

No.	Date	By	Revision

HULEN DRIVE TRAFFIC CALMING
Speed Humps

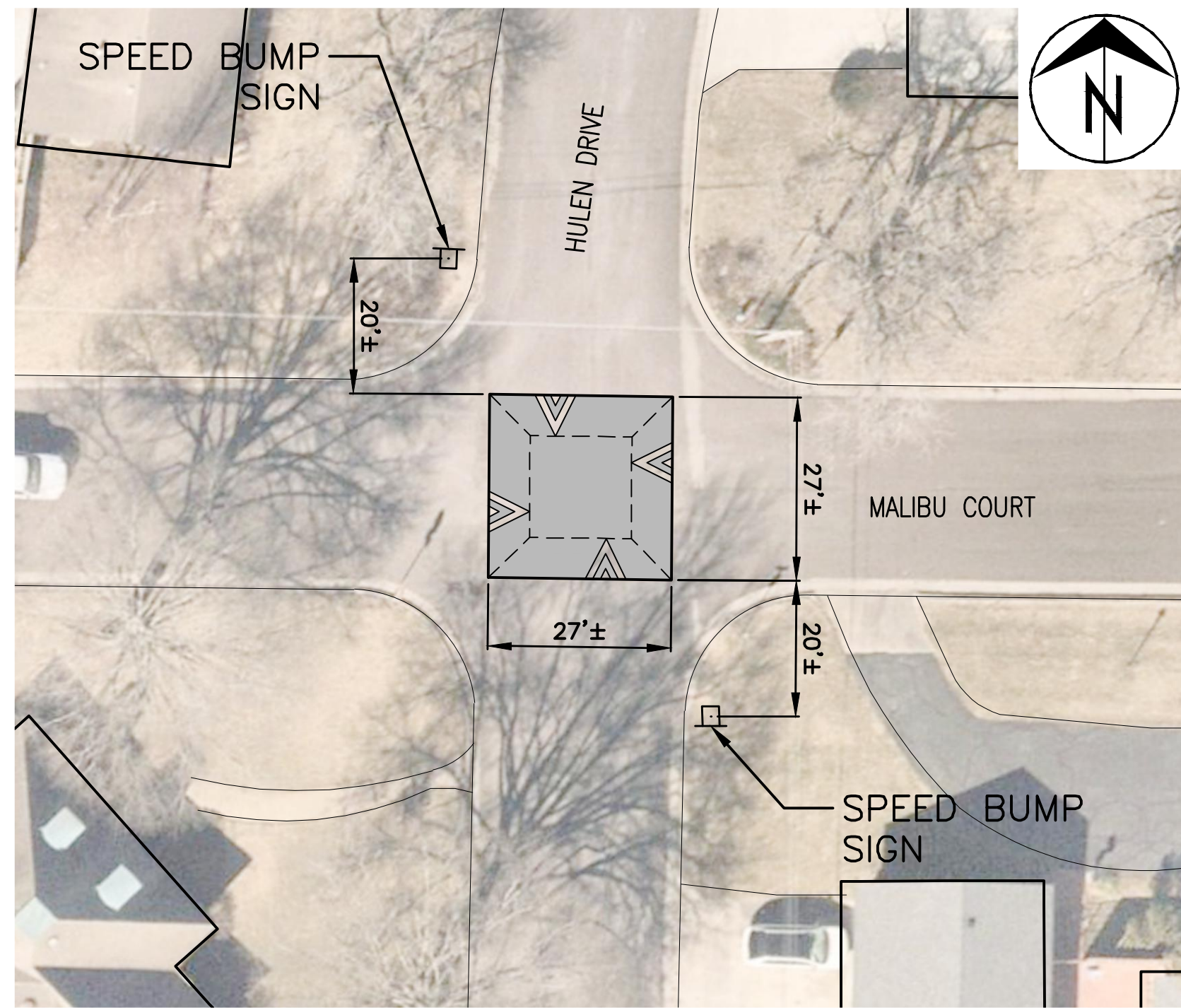
Mission
Provide safe, sustainable infrastructure that promotes positive communities.

701 East Broadway
P.O. Box 6015
Columbia, MO 65205
(573) 875-2489



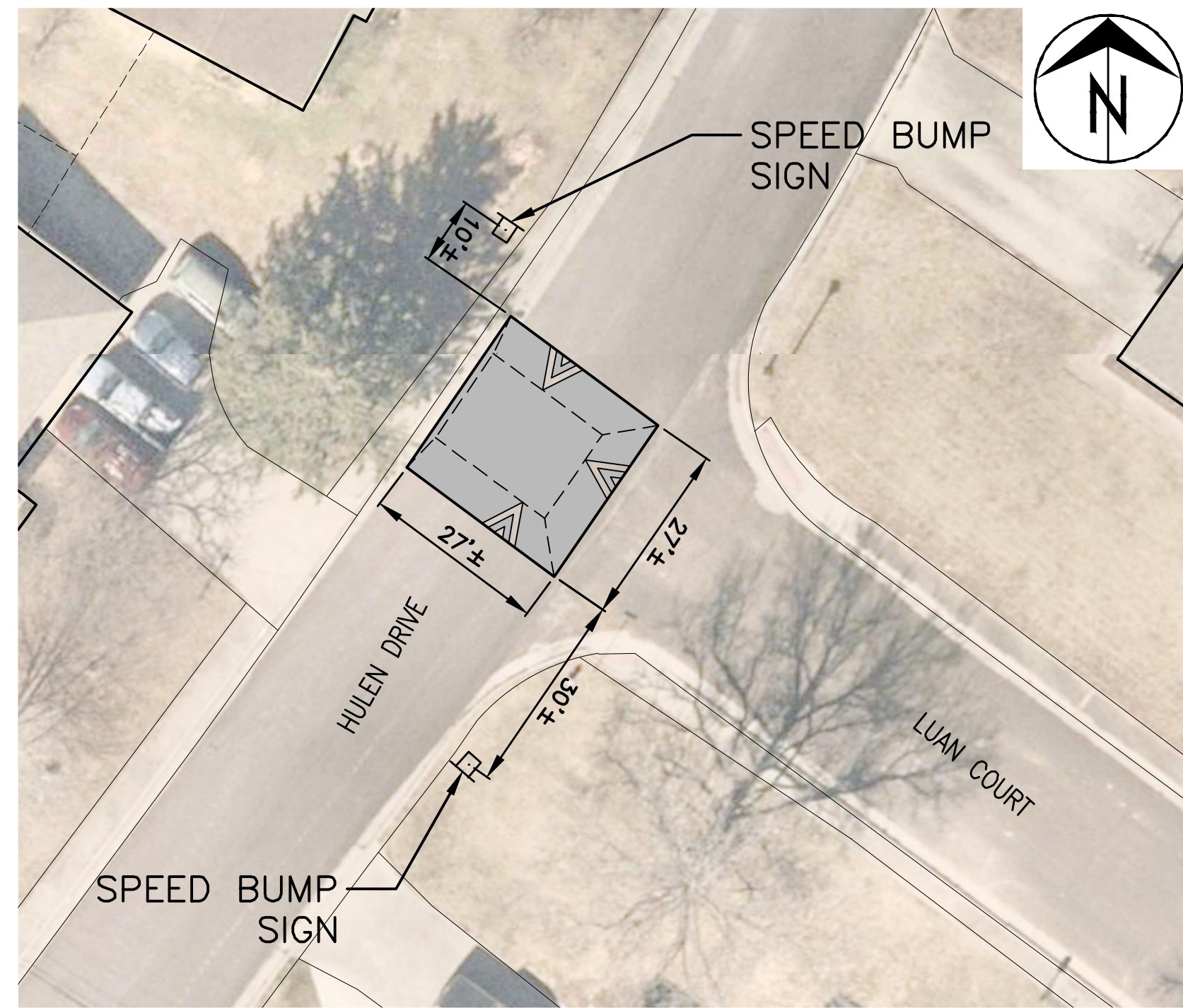
Shane Steven Creech
Registered Professional Engineer
PE-2007011061

File No.	
Scale:	As Shown
Date:	10/26/2023
Des.	A.S.B.
Dwn.	S.A.W.
Chk.	J.D.R.



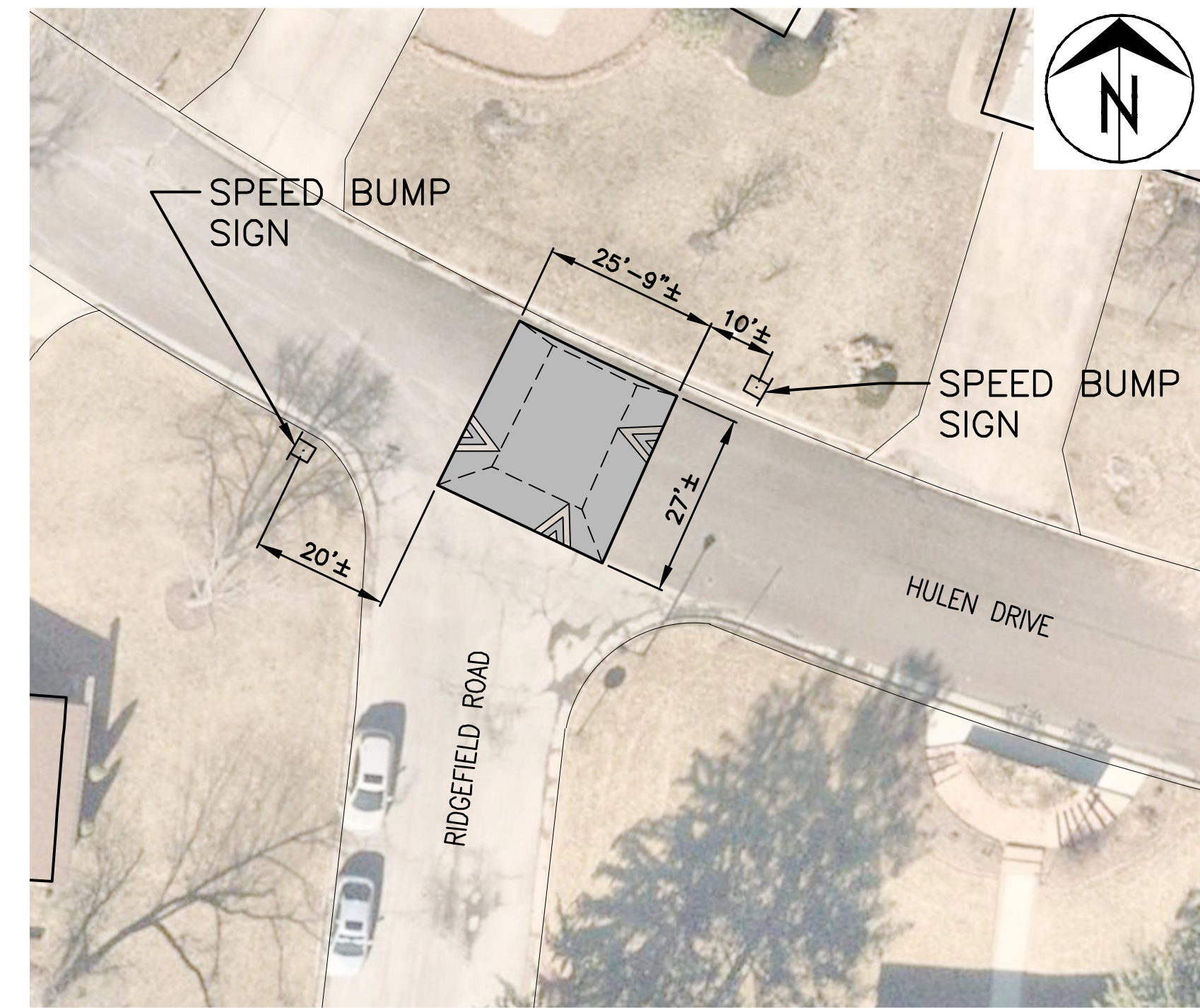
HULEN DRIVE AND MALIBU COURT

1"=20'



HULEN DRIVE AND LUAN COURT

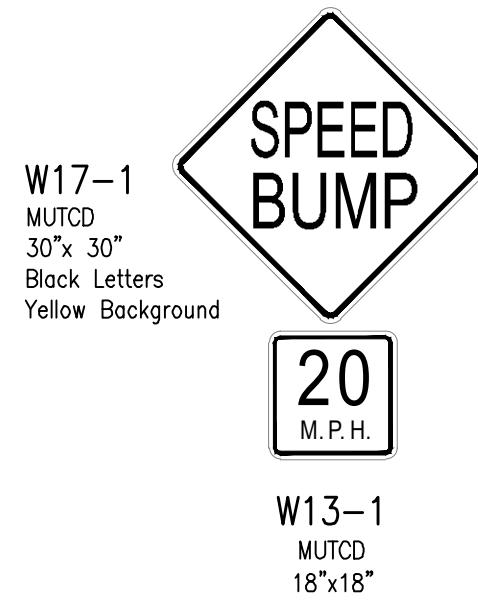
1"=20'



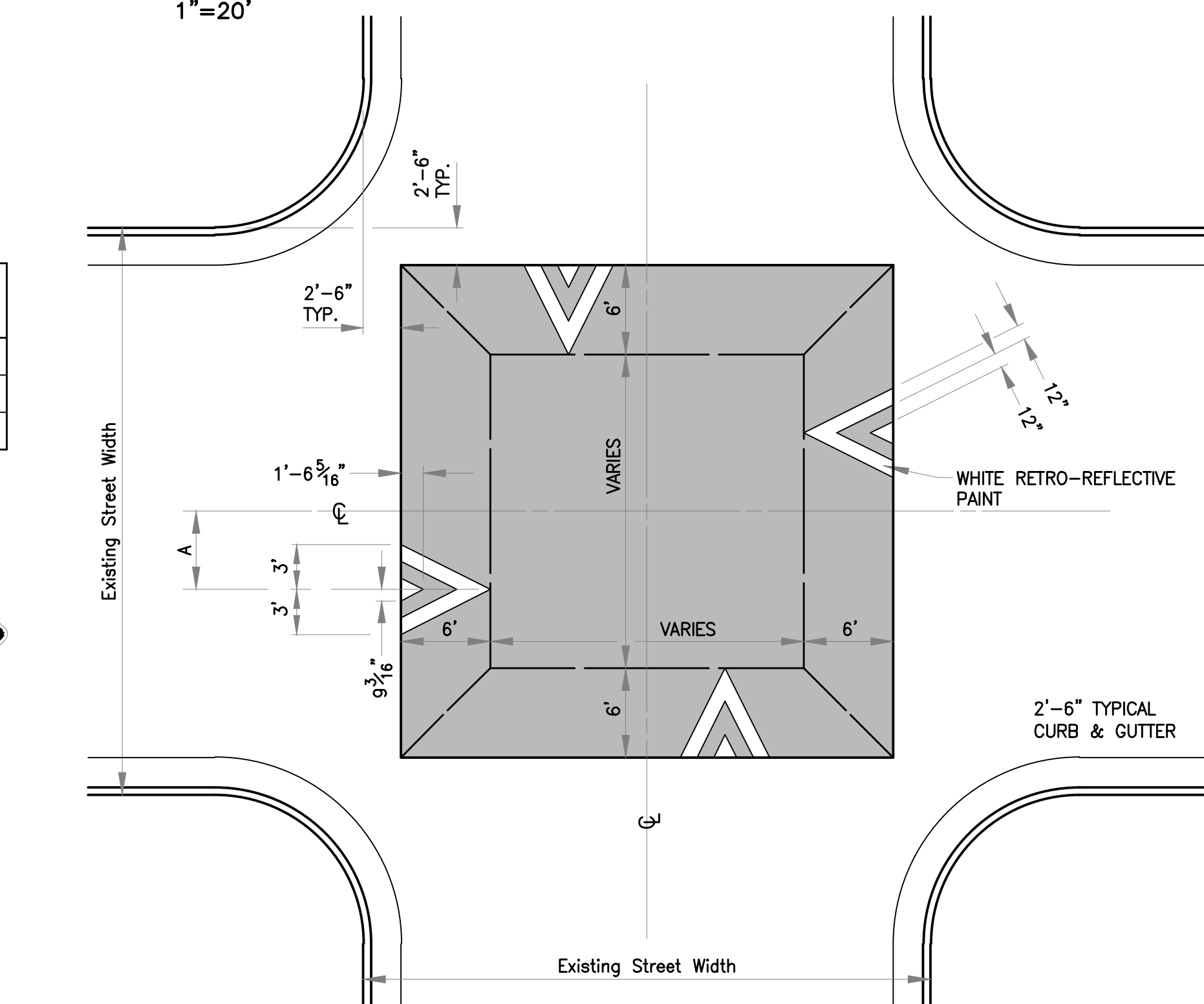
HULEN DRIVE AND RIDGEFIELD ROAD

1"=20'

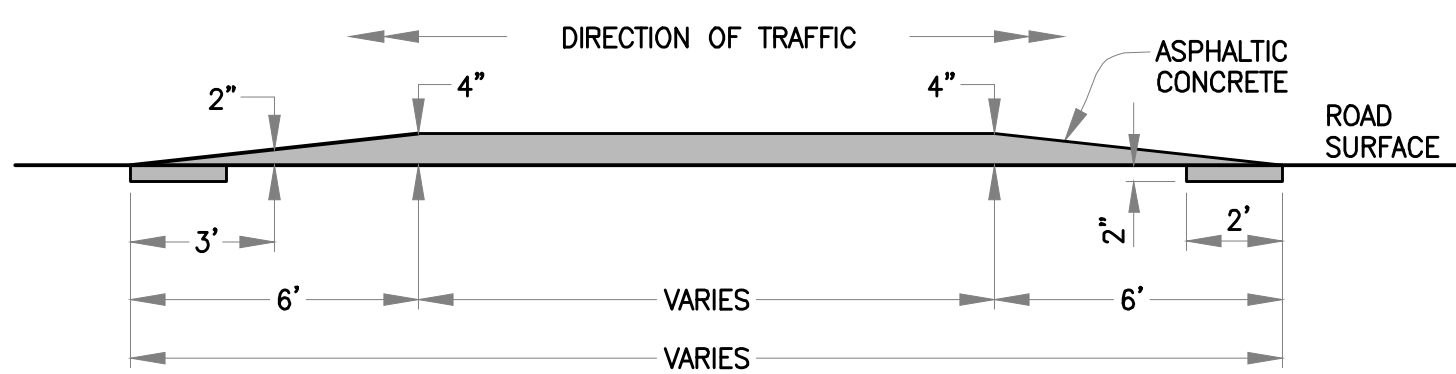
Existing Street Width (Back of Curb to Back of Curb)	A
38' & wider	5'-3"
between 32' & 38'	3'-9"
32' & narrower	3'-2"



PLACED APPROX. 30'
BEFORE TABLE OR AS
DIRECTED BY INSPECTOR.

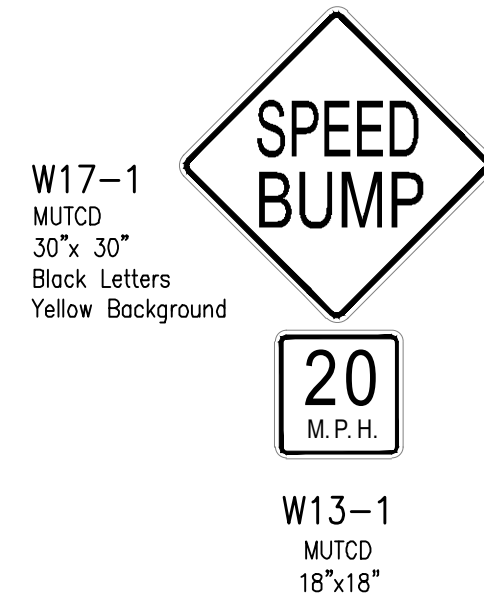


PLAN
NOT TO SCALE

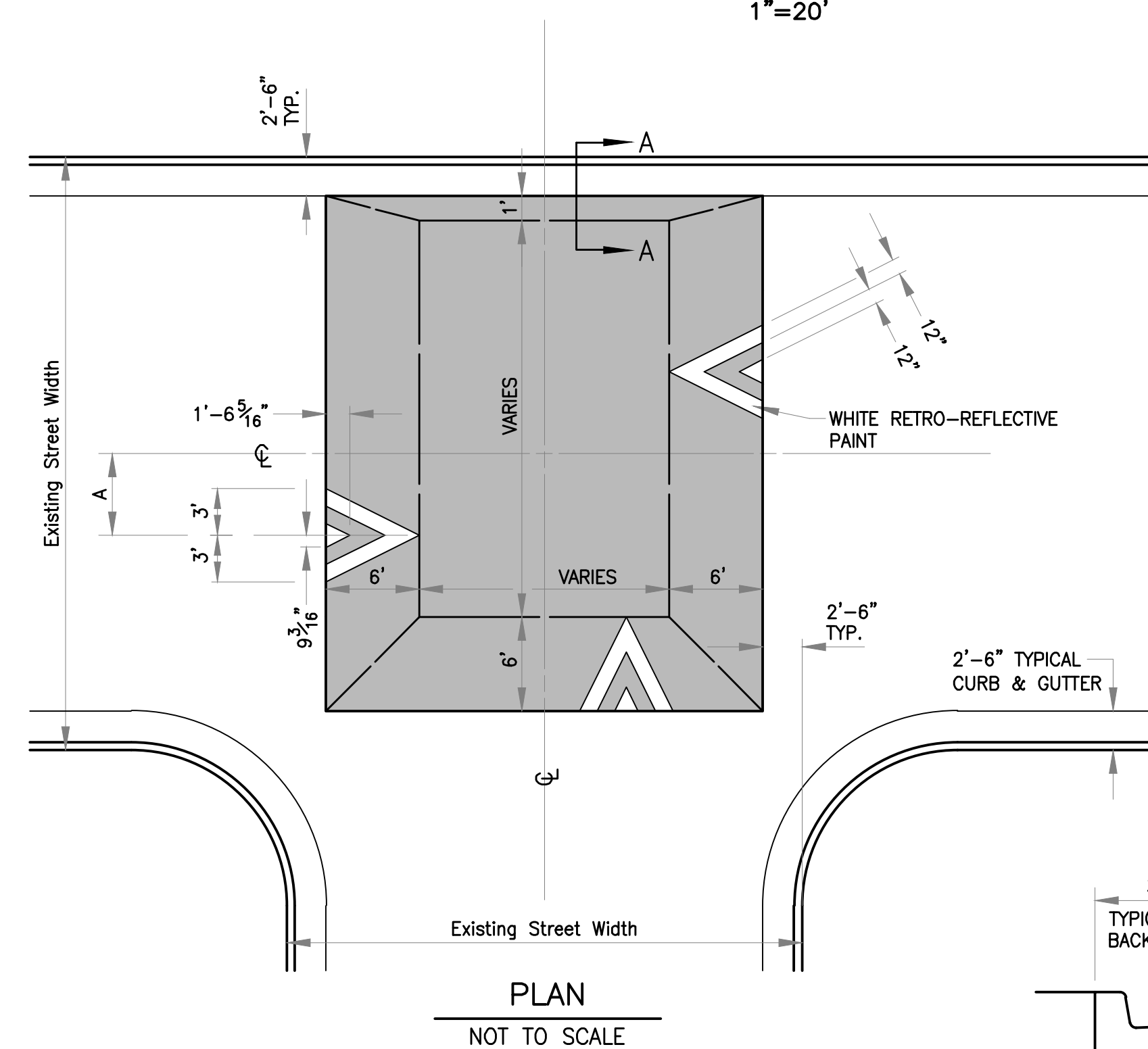


SPEED TABLE
NOT TO SCALE

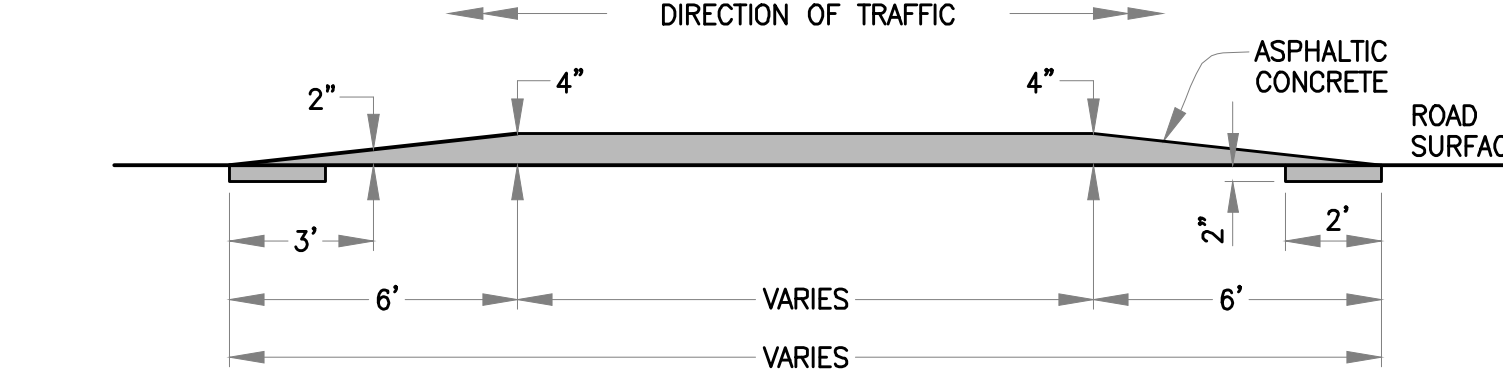
Existing Street Width (Back of Curb to Back of Curb)	A
38' & wider	5'-3"
between 32' & 38'	3'-9"
32' & narrower	3'-2"



PLACED APPROX. 30'
BEFORE TABLE OR AS
DIRECTED BY INSPECTOR.

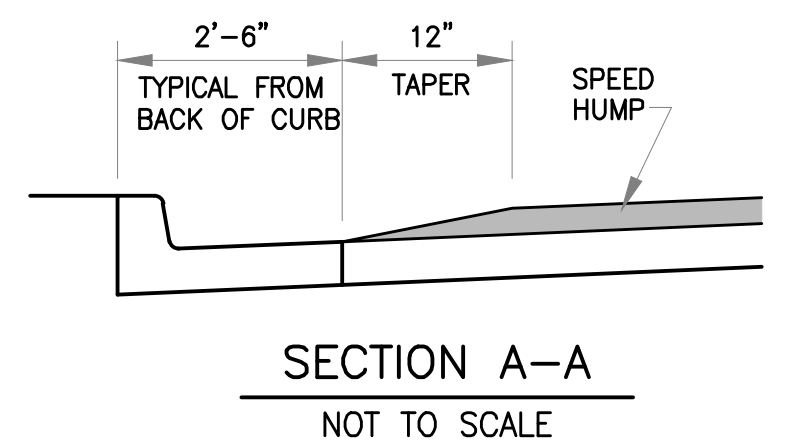


PLAN
NOT TO SCALE



PROFILE
NOT TO SCALE

SPEED TABLE - T-INTERSECTION



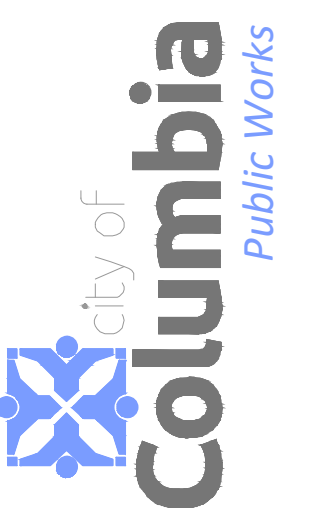
SECTION A-A
NOT TO SCALE

No.	Date	By	Revision

HULEN DRIVE TRAFFIC CALMING
Speed Tables

Mission
Provide safe, sustainable infrastructure that promotes positive communities.

701 East Broadway
P.O. Box 6015
Columbia, MO 65205
(573) 875-2489



Shane Steven Crech
Registered Professional Engineer
PE-2007011061

File No.	
Scale:	1"=20'
Date:	10/26/2023
Des.	A.S.B.
Dwn.	S.A.W.
Chk.	J.D.R.

©\vectors\Traffic Calming\hulen_dr_traffic_calming.dwg

2015 Orthophoto Source: Boone County Assessor