

Source: Nearmap. <https://www.nearmap.com/us/en>

# Case # 191-2023 - 1215 E. Nifong Boulevard Rezoning



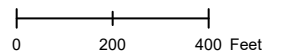
 City Zoning  Parcels

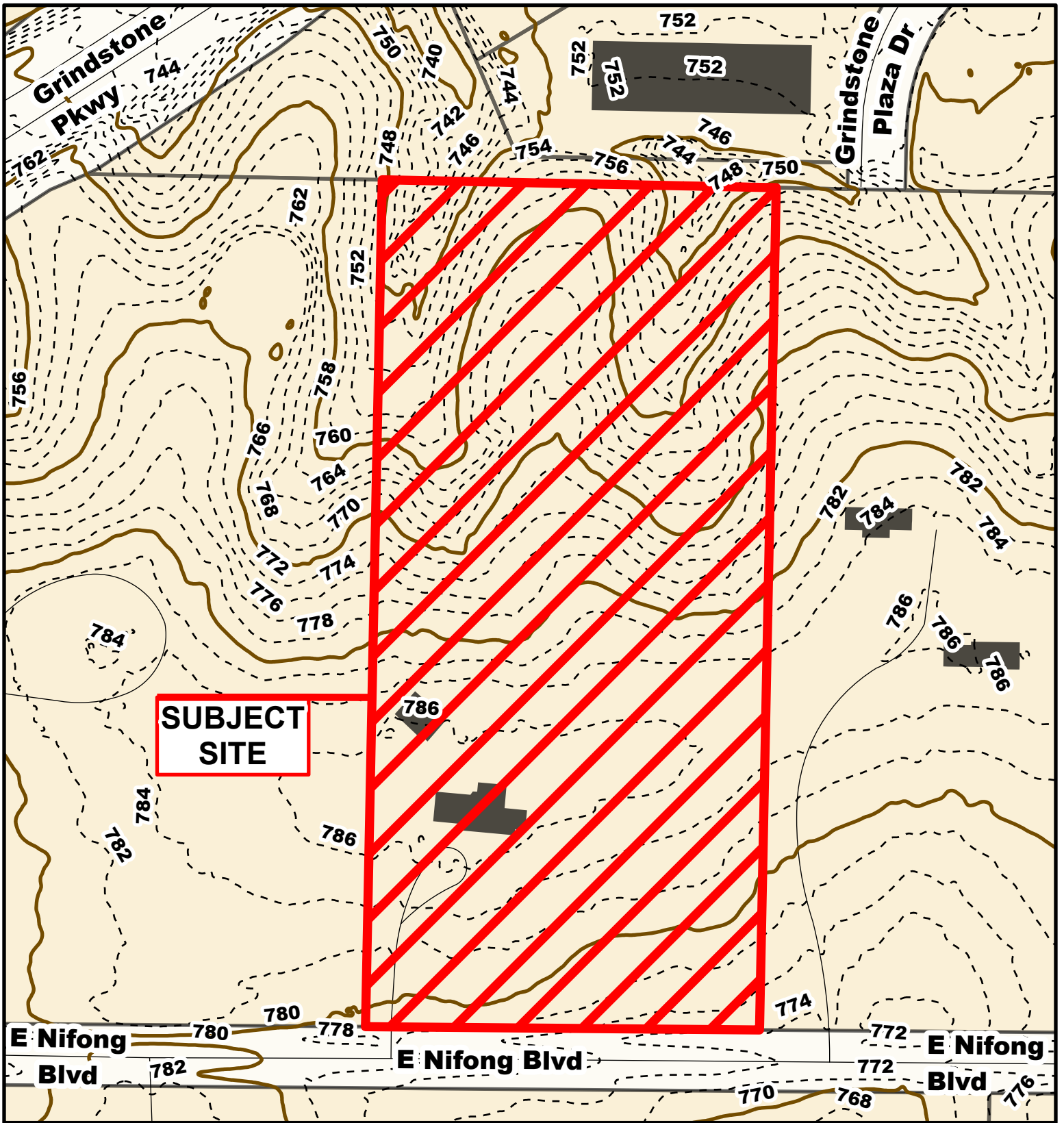


Parcel Data Source: Boone County Assessor

Created by The City of Columbia - Community Development Department

2022 Imagery: NearMap



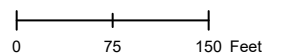


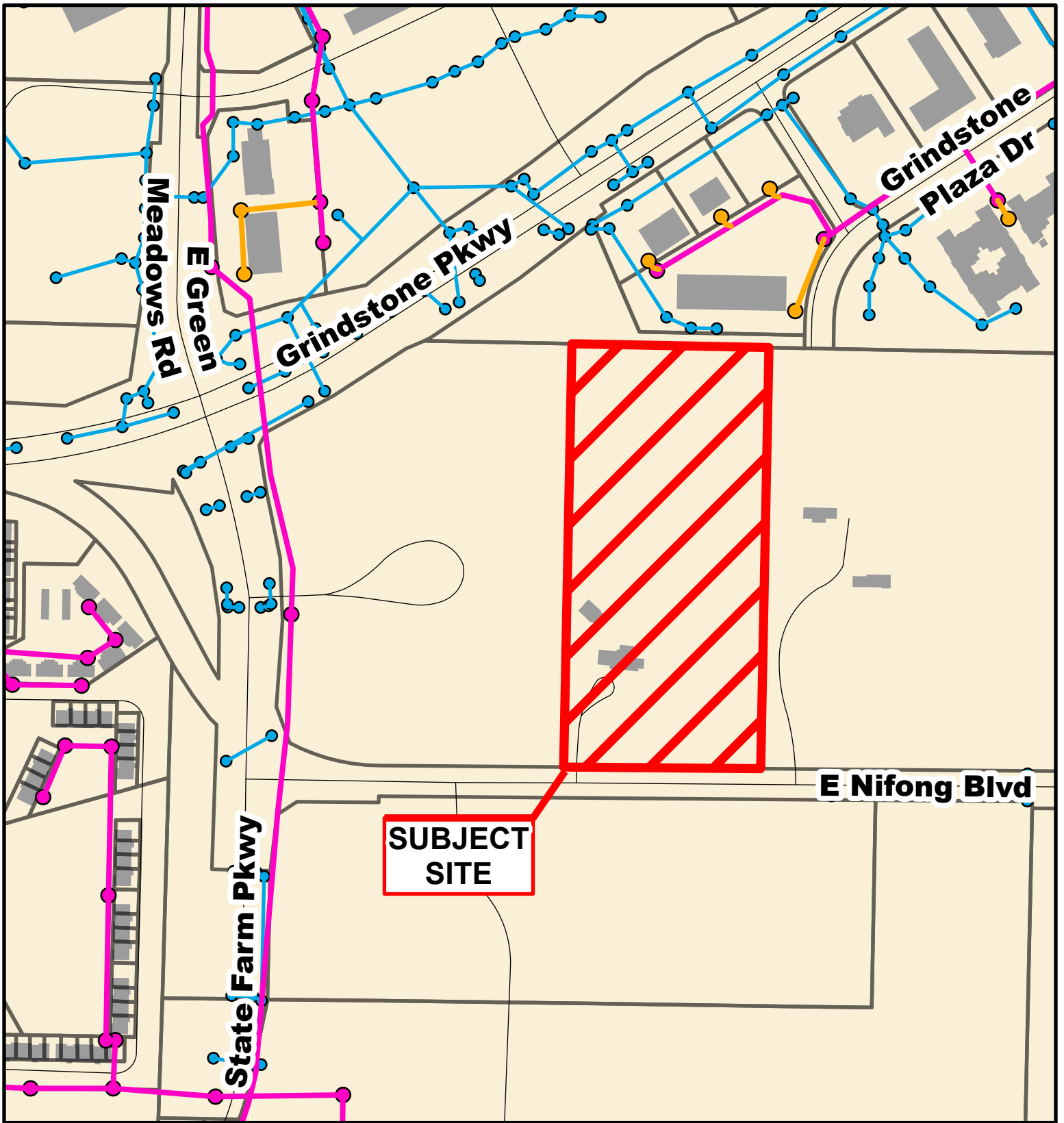
# Case # 191-2023 - 1215 E. Nifong Boulevard Rezoning



Parcel Data Source: Boone County Assessor  
Created by The City of Columbia - Community Development Department

- 10 Foot Contour Lines
- 2 Foot Contour Lines
- Parcels





# Case # 191-2023 - 1215 E. Nifong Boulevard

## Rezoning



- City Sanitary Line
- City Storm Lines
- Private Sanitary Line
- Parcels

