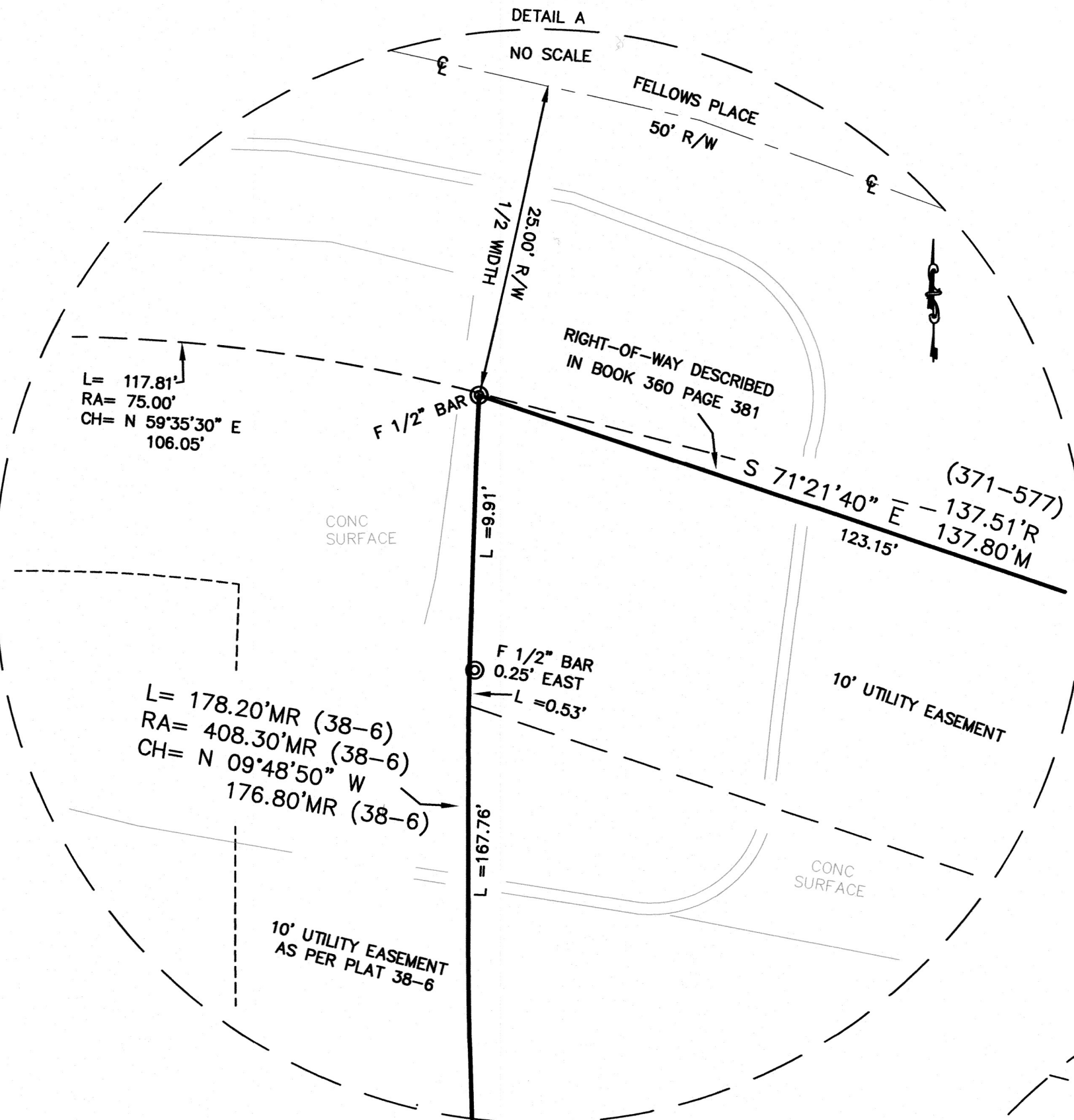


AREA CALCULATIONS - SEE NOTE 4

TOTAL AREA	23420 SQ. FEET
NEW R/W	16 SQ. FEET
AREA OF LOT	23404 SQ. FEET



KNOW ALL MEN BY THESE PRESENTS:  
THAT, OSARAONE INC., A MISSOURI CORPORATION, IS THE SOLE OWNER OF THE ABOVE  
DESCRIBED TRACT AND HAS CAUSED SAID TRACT TO BE SURVEYED, SUBDIVIDED AND  
PLATTED AS SHOWN ON THE PLAT. ADDITIONAL RIGHT-OF-WAY SHOWN UPON THE ATTACHED  
PLAT IS HEREBY DEDICATED TO THE CITY OF COLUMBIA FOREVER. THE PUBLIC UTILITY  
EASEMENTS OF THE TYPES AND AT THE LOCATIONS AS SHOWN, ARE HEREBY DEDICATED TO  
THE CITY OF COLUMBIA AND ITS SUCCESSORS AND ASSIGNS IN, ON, UPON, ACROSS, OVER,  
UNDER, AND THROUGH THE UTILITY EASEMENTS SHOWN ON THE PLAT FOR THE PURPOSE OF  
INSTALLING, CONSTRUCTING, INSPECTING, OPERATING, REPLACING, RENOVATING, ALTERING,  
ENLARGING, REMOVING, REPAIRING, CLEANING AND MAINTAINING PUBLIC UTILITIES OF ANY KIND  
OR TYPE WHATSOEVER (INCLUDING WITHOUT LIMITATION, ELECTRIC, WATER, SEWER, DRAINAGE,  
FIBER, CABLE TELEVISION, STORMWATER AND ALL APPURTENANCES THERETO) UNLESS  
SPECIFICALLY LIMITED BY SUCH DEDICATION AND DESIGNATION ON THE PLAT TO A  
PARTICULAR TYPE OF UTILITY, TOGETHER WITH THE RIGHT OF ACCESS ACROSS SAID PUBLIC  
UTILITY EASEMENTS FOR THE NECESSARY PERSONNEL AND EQUIPMENT TO PERFORM SUCH  
WORK. SUCH RIGHTS INCLUDE THE RIGHT TO CUT DOWN, TRIM OR REMOVE ANY TREES,  
SHRUBS, OR OTHER PLANTS THAT INTERFERE WITH THE OPERATION OF OR ACCESS TO ANY  
CITY OR PUBLIC UTILITY FACILITIES IN, ON, UPON, ACROSS, OVER, UNDER, OR THROUGH SAID  
PUBLIC UTILITY EASEMENTS. NO PERMANENT BUILDINGS, STRUCTURES, OR IMPROVEMENTS  
SHALL BE PLACED ON SAID EASEMENTS WHICH WOULD INTERFERE WITH THE OPERATION OF  
OR ACCESS TO SUCH PUBLIC UTILITY EASEMENTS. ANY CITY OR PUBLIC UTILITY FACILITIES IN,  
ON, UPON, ACROSS, OVER, UNDER, OR THROUGH SAID PUBLIC UTILITY EASEMENTS

DURGESH PATEL PRESIDENT

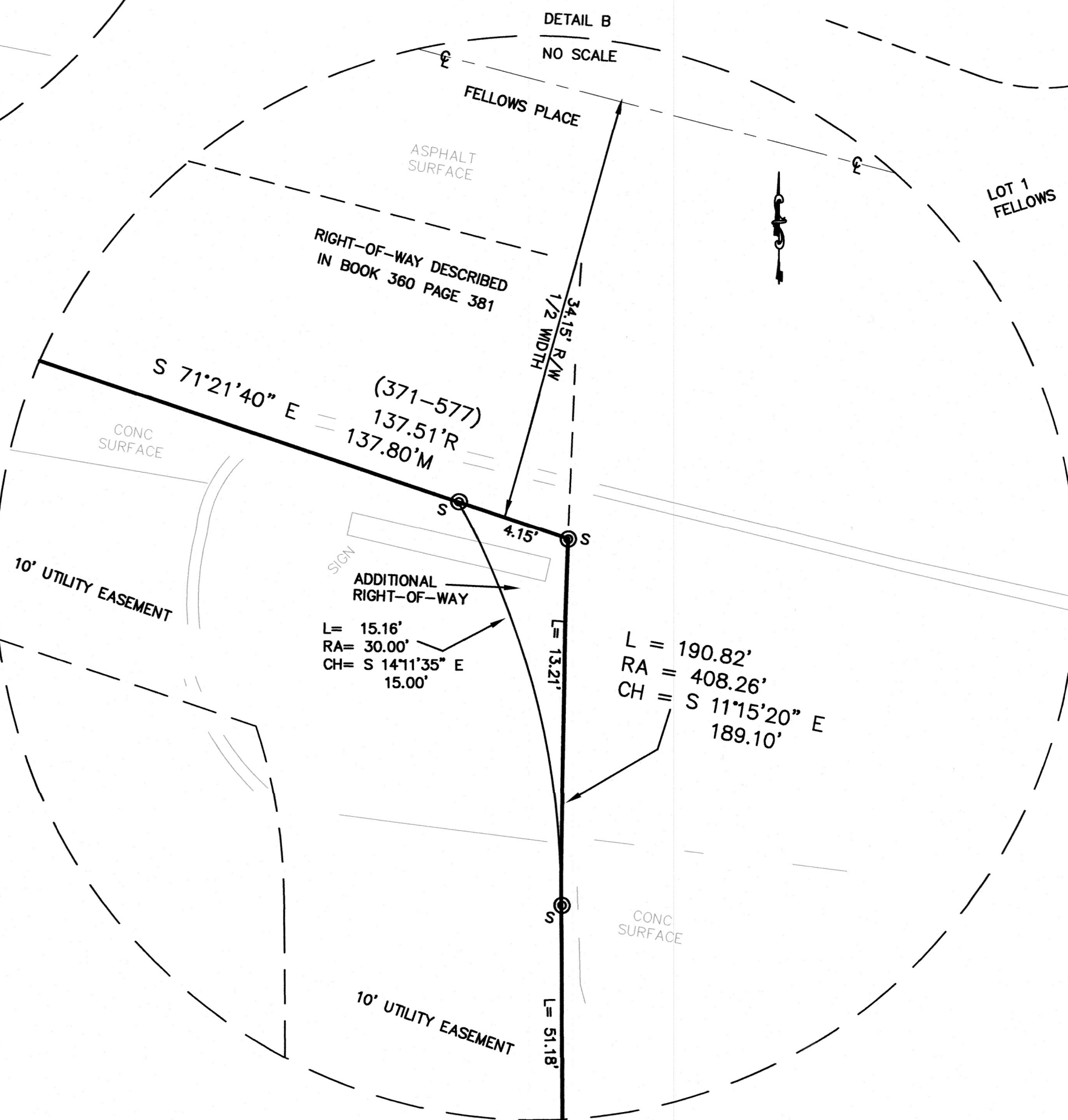
SHILPA PATEL SECRETARY

STATE OF MISSOURI }  
COUNTY OF BOONE }

ON THIS \_\_\_\_\_ DAY OF \_\_\_\_\_, 2025  
BEFORE ME APPEARED, DURGESH PATEL AND SHILPA PATEL, PRESIDENT AND  
SECRETARY OF OSARAONE INC., A MISSOURI CORPORATION, TO ME PERSONALLY  
KNOWN, WHO BY ME DULY SWORN DID SAY THAT THEY ARE THE PRESIDENT  
AND SECRETARY AS STATED ABOVE AND THAT THIS INSTRUMENT WAS SIGNED  
ON BEHALF OF SAID CORPORATION BY AUTHORITY OF ITS BOARD OF DIRECTORS  
AND SAID PRESIDENT AND SECRETARY ACKNOWLEDGED SAID INSTRUMENT TO BE  
THE FREE ACT AND DEED OF SAID CORPORATION IN TESTIMONY WHEREOF, I, A  
NOTARY PUBLIC, HAVE HEREUNTO SET MY HAND AND AFFIXED MY OFFICIAL  
SEAL AT MY OFFICE IN BOONE COUNTY, MISSOURI THE DAY AND YEAR FIRST  
ABOVE WRITTEN.

NOTARY PUBLIC

MY COMMISSION EXPIRES: \_\_\_\_\_



## FELLOWS ADDITION # 8

A MINOR SUBDIVISION  
NORTHWEST QUARTER OF SECTION 19,  
TOWNSHIP 48 NORTH, RANGE 12 WEST  
SUBMITTED DATE: JANUARY 13, 2025

