

# Case # 25-2025 - 1591 E. Prathersville Road

## Permanent Zoning

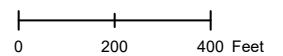


City Zoning
  Parcels

Parcel Data Source: Boone County Assessor

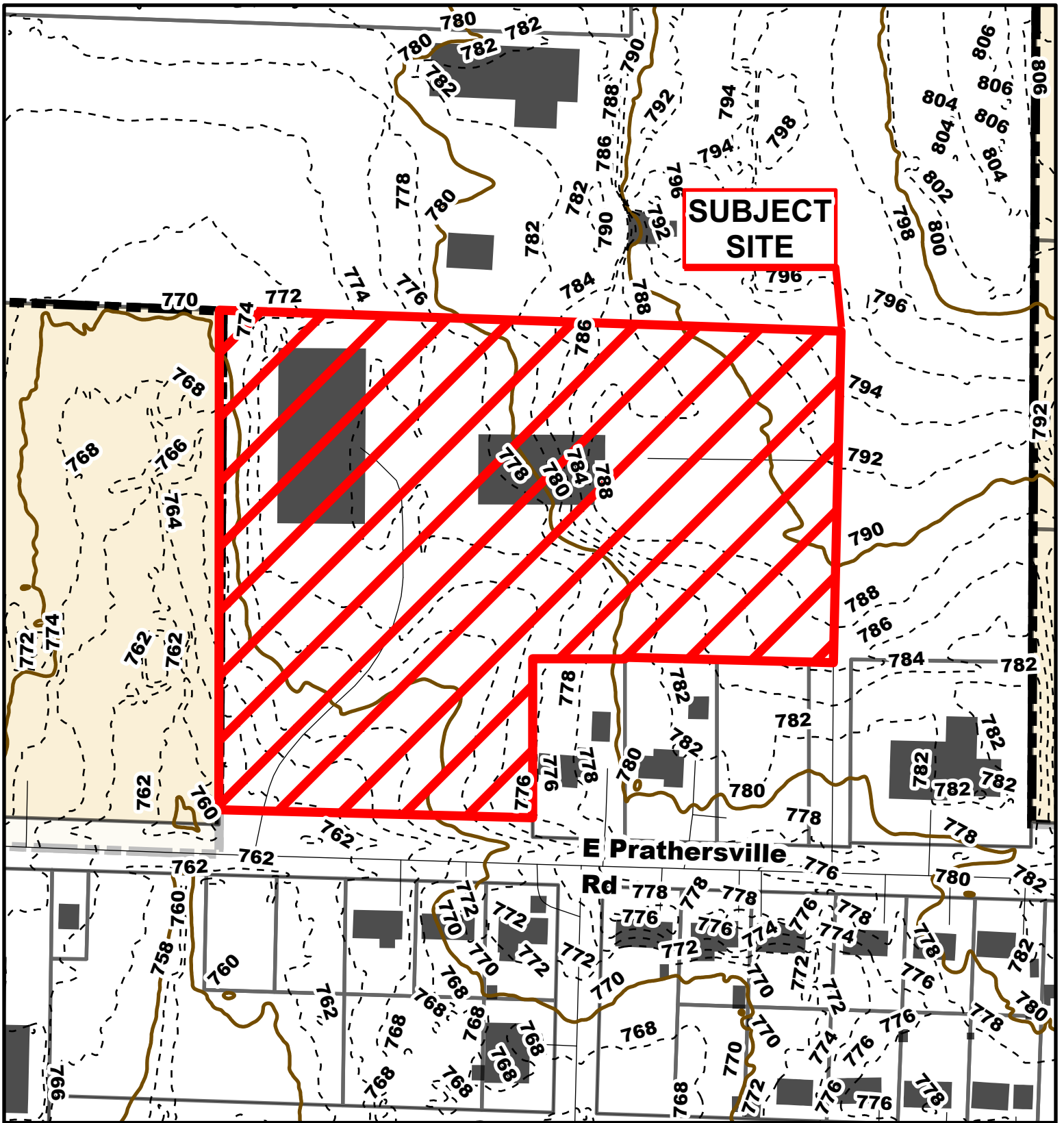
Created by The City of Columbia - Community Development Department

2022 Imagery: NearMap



Source: Nearmap. <https://www.nearmap.com/us/en/>





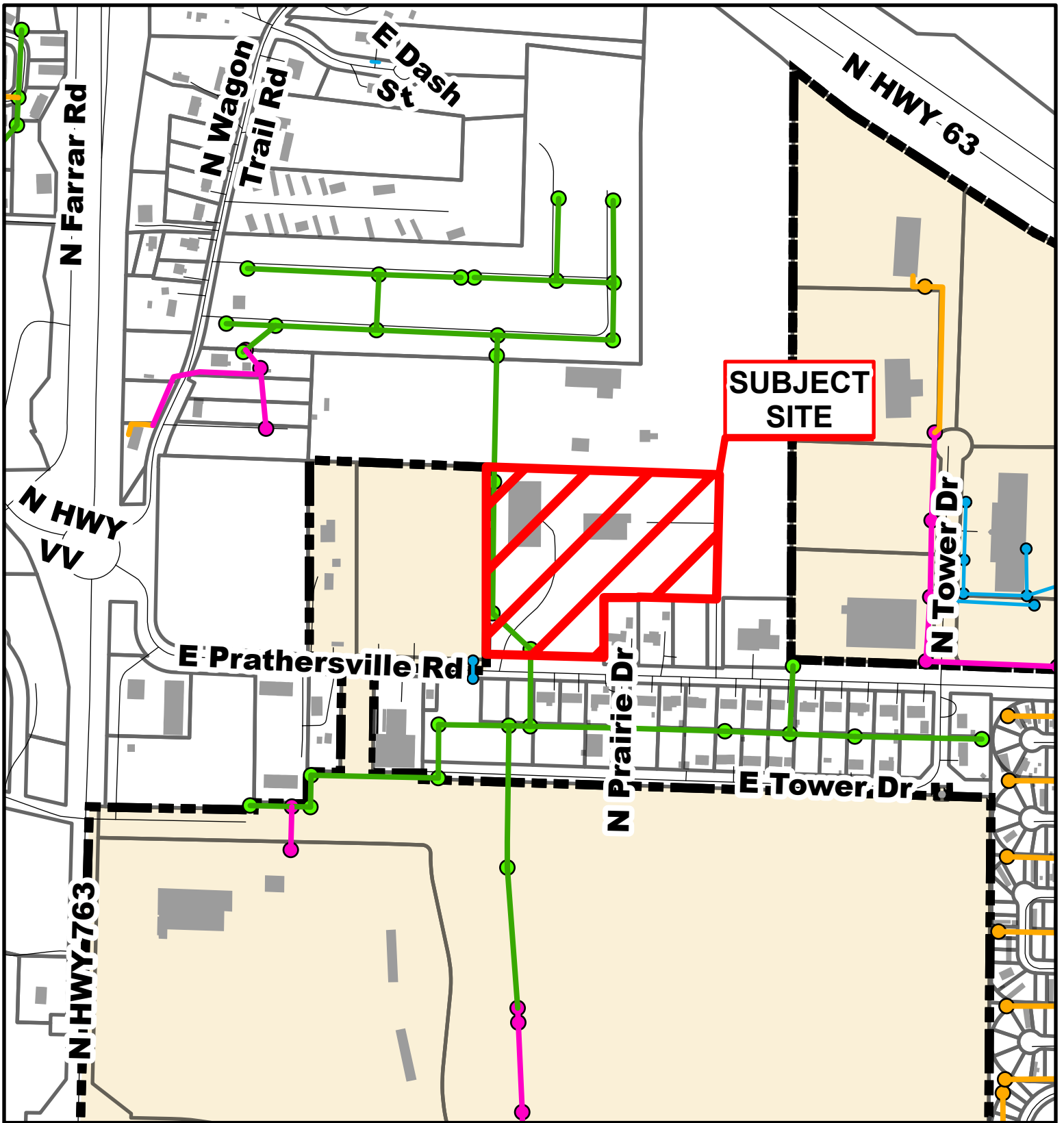
# Case # 25-2025 - 1591 E. Prathersville Road

## Permanent Zoning



- 10 Foot Contour Lines
- Parcels
- 2 Foot Contour Lines





## Case # 25-2025 - 1591 E. Prathersville Road

### Permanent Zoning



- City Sanitary Line
- BCRSD Sanitary Line
- Private Sanitary Line
- City Storm Lines
- Parcels

