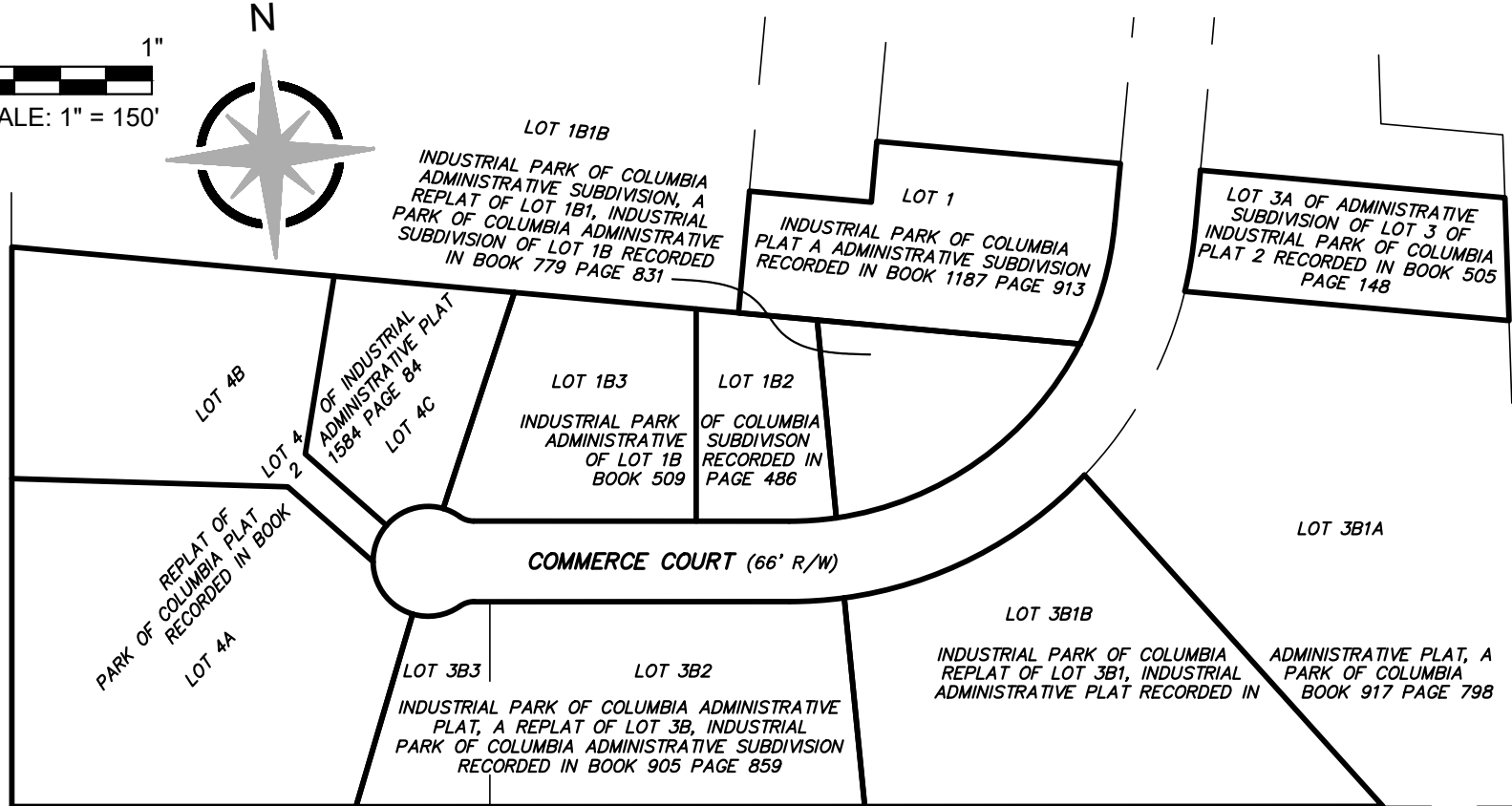
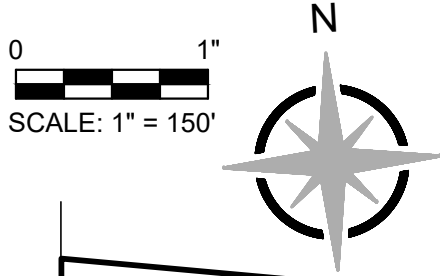


**INDUSTRIAL PARK OF COLUMBIA
MC-IG PROPERTIES DESCRIPTION**



INTERSTATE 70

INDUSTRIAL PARK OF COLUMBIA
SE 1/4 SECTION 1 T48N R13W
COLUMBIA, BOONE COUNTY, MISSOURI



ENGINEERING SURVEYS & SERVICES
1113 FAY STREET
COLUMBIA, MO 65201
PHONE: (573) 449-2646
MISSOURI L.S. CORP. #2004004672
FREDERICK E. CARROZ III
PROFESSIONAL LAND SURVEYOR
PLS - 2008016655
EMAIL: FCARROZ@ESS-INC.COM

EXHIBIT "A"
SHEET 2 OF 2
ES&S PROJECT NO. 16627

