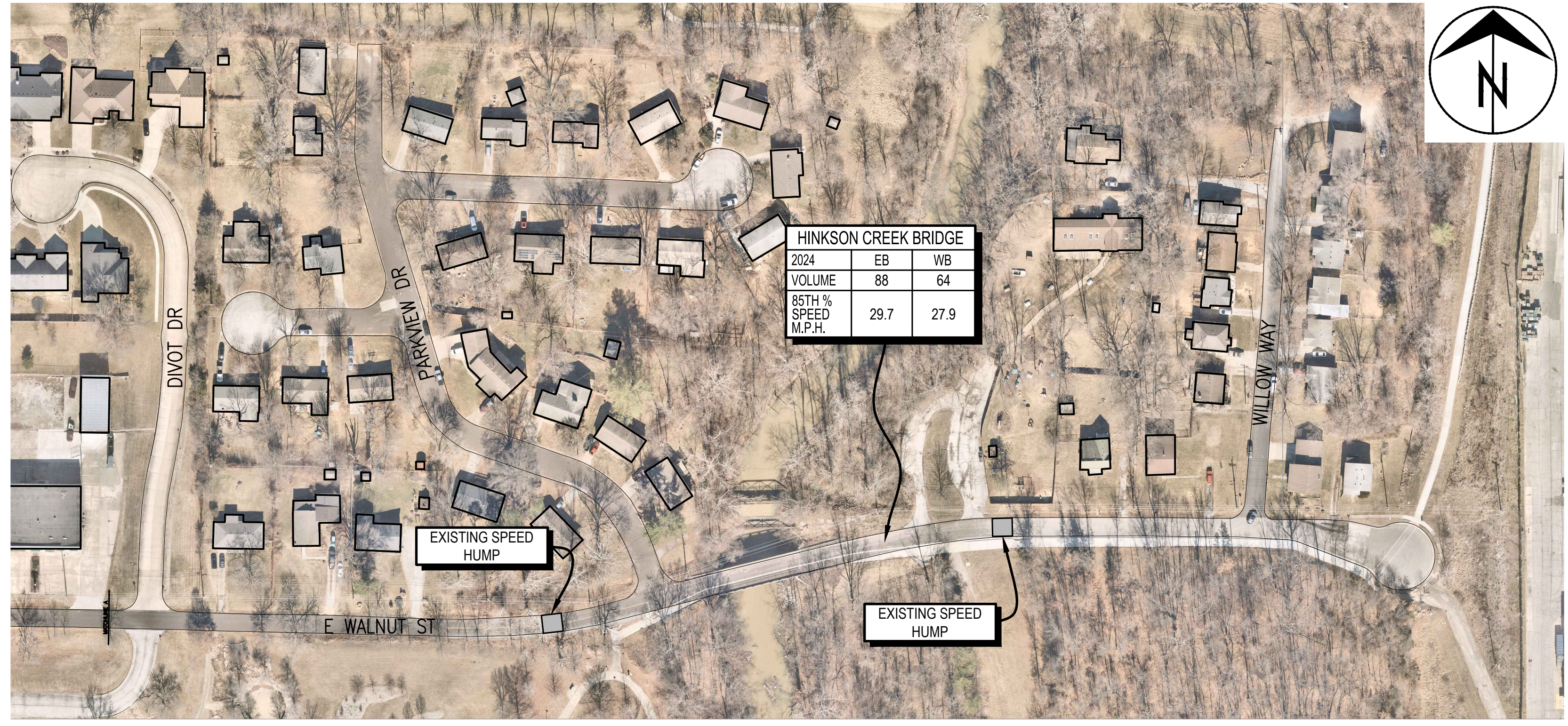


1911 E. WALNUT ST.		
2024	EB	WB
VOLUME	814	795
85TH % SPEED M.P.H.	38.9	38.9

2103 E WALNUT ST		
2024	EB	WB
VOLUME	578	595
85TH % SPEED M.P.H.	41.0	43.4

2311 E WALNUT ST		
2024	EB	WB
VOLUME	337	414
85TH % SPEED M.P.H.	38.9	39.3



HINKSON CREEK BRIDGE		
2024	EB	WB
VOLUME	88	64
85TH % SPEED M.P.H.	29.7	27.9

EXISTING SPEED HUMP

EXISTING SPEED HUMP

o:\external\traffic\calming\east\_walnut\_traffic\_calming.dwg

2015 Orthophoto Source: Boone County Assessor

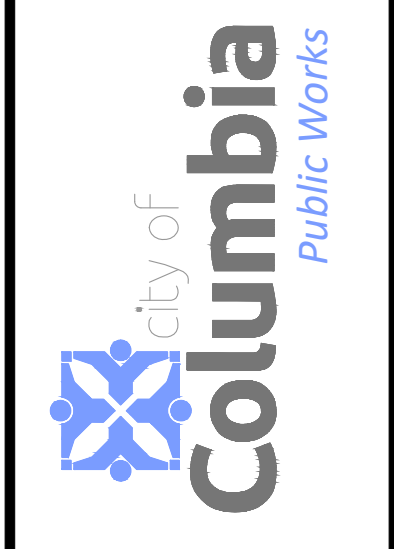
No.	Date	By	Revision

# EAST WALNUT TRAFFIC CALMING

Speed and Volume Data

**Mission**  
Provide safe, sustainable infrastructure that promotes positive communities.

701 East Broadway  
P.O. Box 6015  
Columbia, MO 65205  
(573) 875-2493



Shane Steven Crech  
Registered Professional Engineer  
PE-2007011061

File No.  
Scale: 1" = 100'  
Date: 4/19/2024  
Des.  
Dwn. A.S.B.  
Chk.