

**Case # 141-2024 - Unaddressed 29-ac  
south of 251 S. Olivet Road**

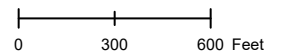
**Permanent Zoning**



Parcel Data Source: Boone County Assessor  
Created by The City of Columbia - Community Development Department

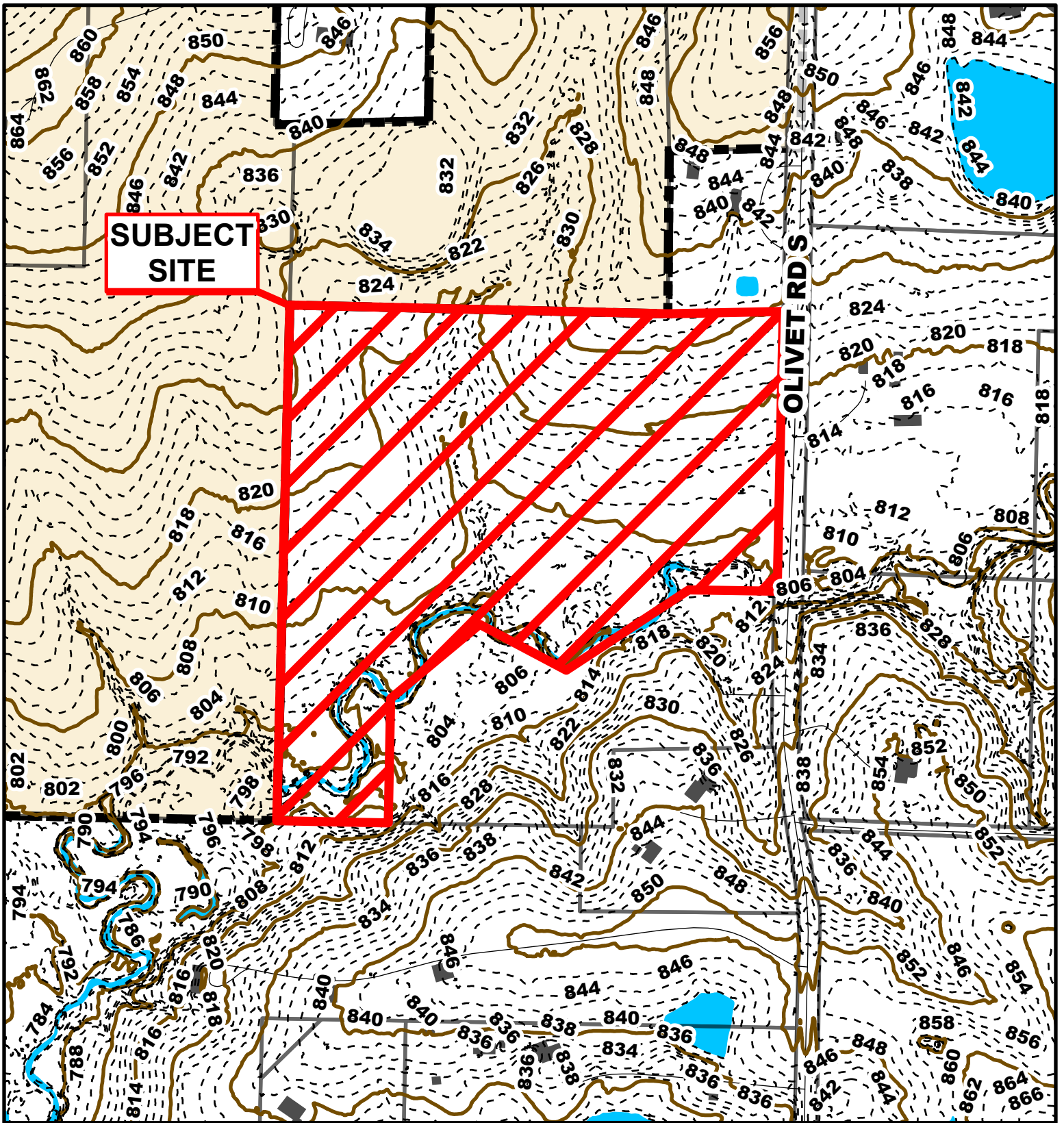
- Columbia City Limit
- City Zoning
- City Property
- Parcels

2022 Imagery: NearMap



Source: Nearmap <https://www.nearmap.com/us/en>





**Case # 141-2024 - Unaddressed 29-ac  
south of 251 S. Olivet Road**

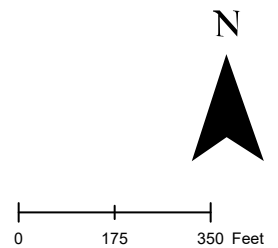
**Permanent Zoning**

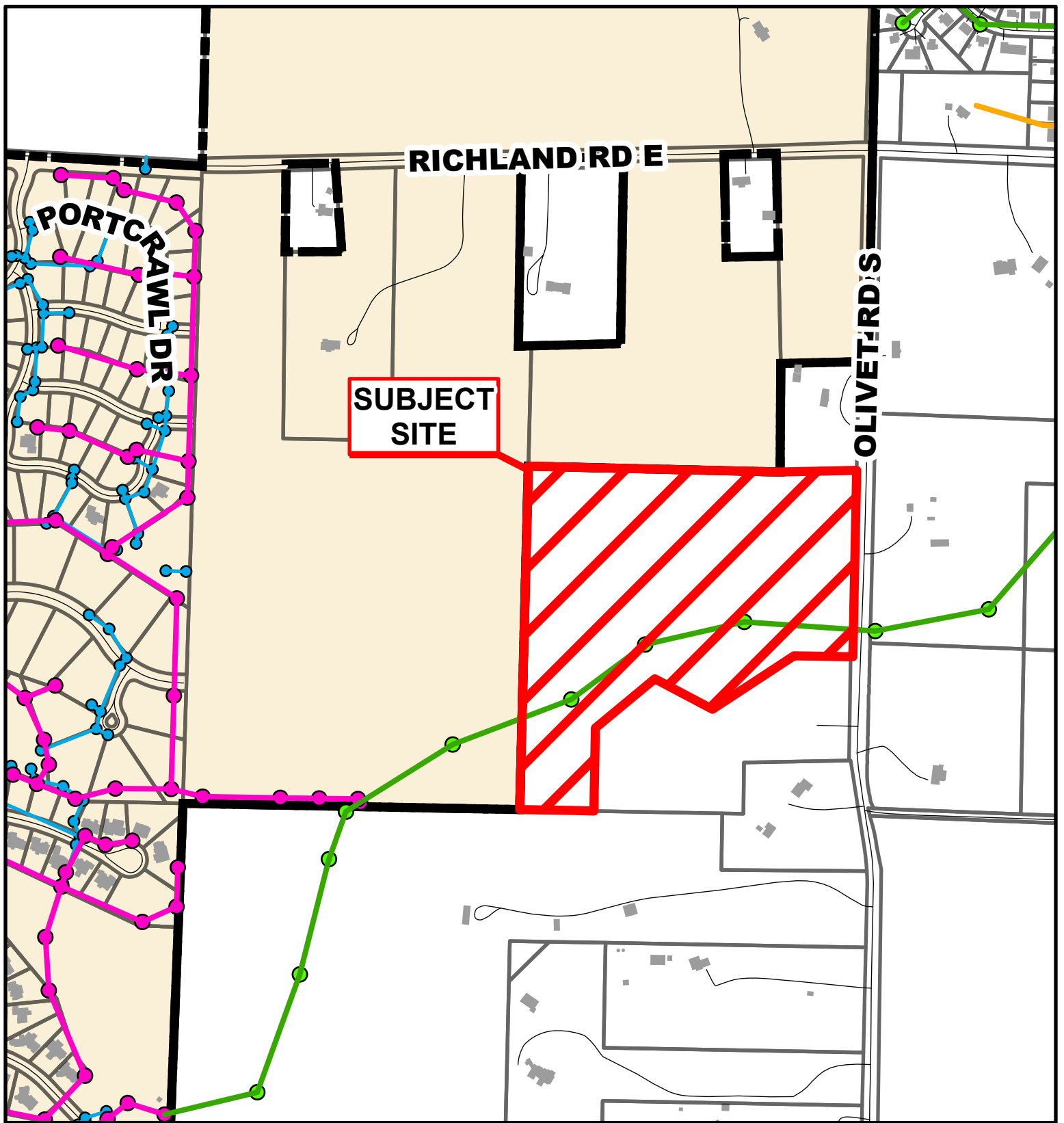


- 10 Foot Contour Lines
- 2 Foot Contour Lines
- City of Columbia
- Parcels

Parcel Data Source: Boone County Assessor

Created by The City of Columbia - Community Development Department





**Case # 141-2024 - Unaddressed 29-ac  
south of 251 S. Olivet Road**

**Permanent Zoning**



Parcel Data Source: Boone County Assessor  
Created by The City of Columbia - Community Development Department

- City Sanitary Line
- City Storm Lines
- BCRSD Sanitary Line
- Parcels
- Private Sanitary Line
- Columbia City Limit

