

Case # 186-2025 - 1409 Grindstone Pkwy Rezoning



Parcel Data Source: Boone County Assessor

Created by The City of Columbia - Community Development Department



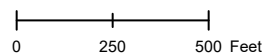
Columbia City Limit

City Property

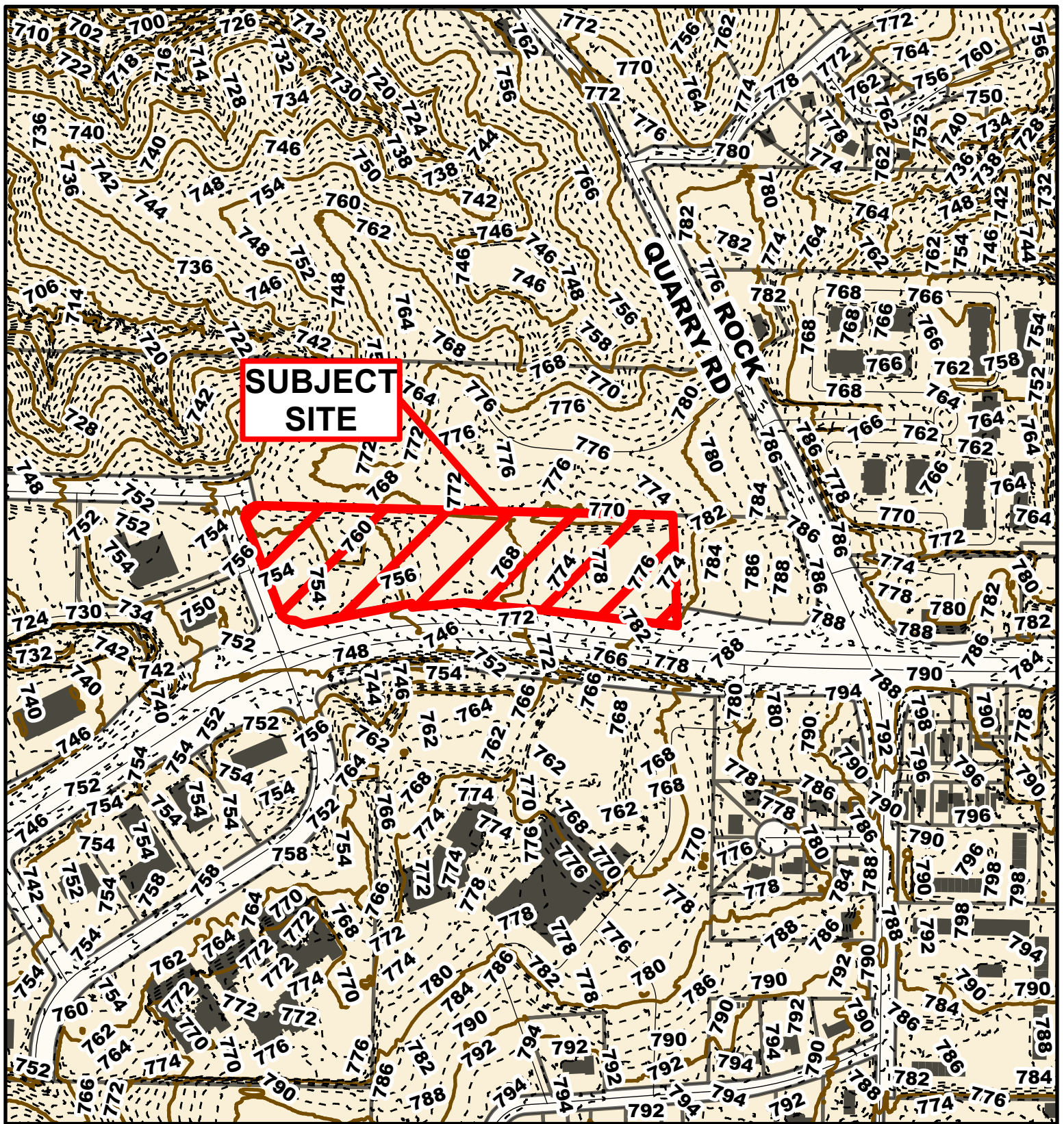
City Zoning

Parcels

N




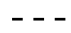
2024 Imagery: NearMap



Case # 186-2025 - 1409 Grindstone Pkwy

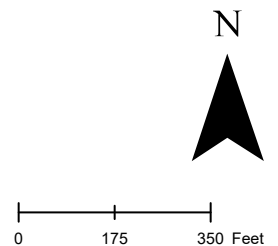
Rezoning

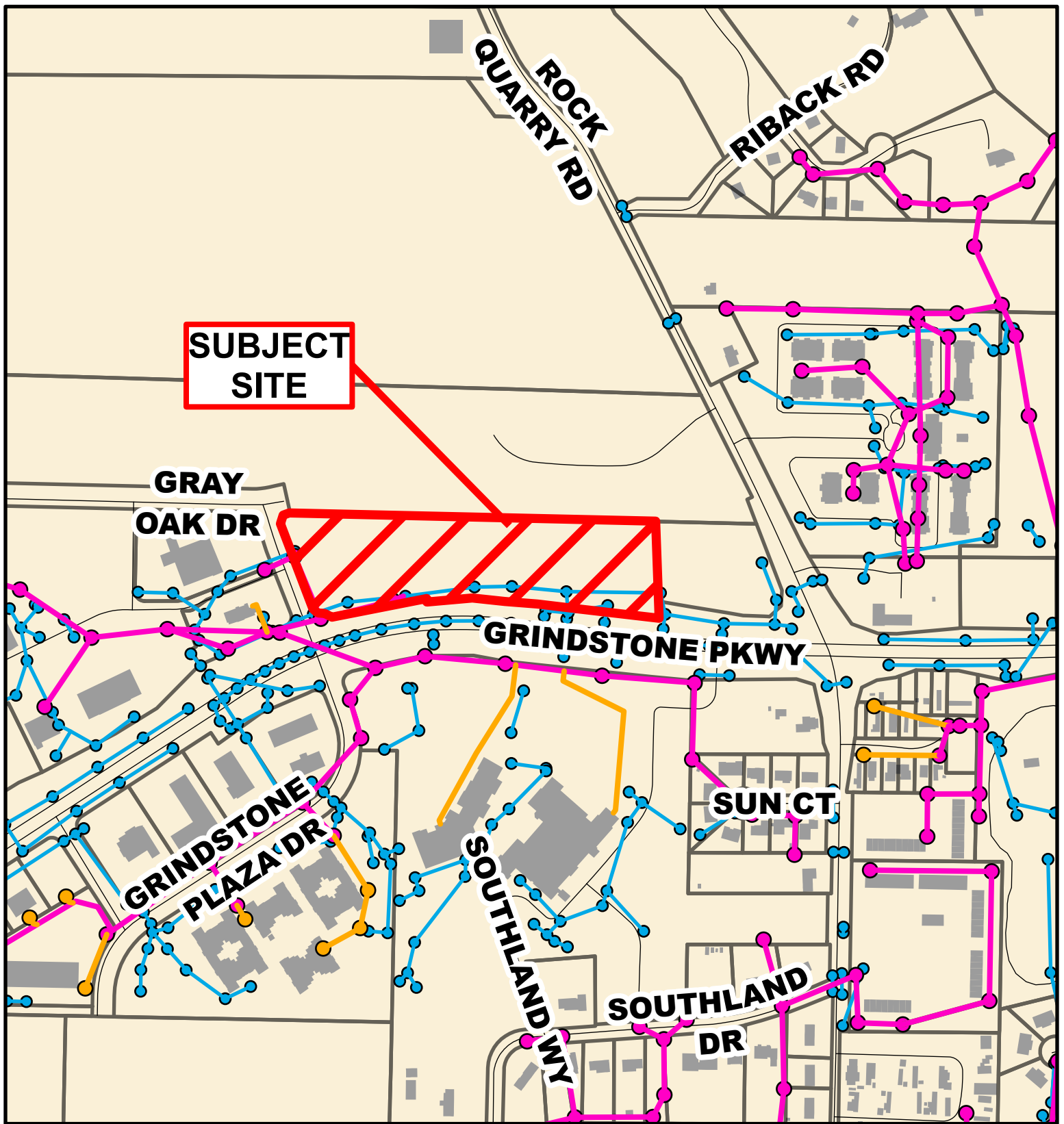


- 10 Foot Contour Lines
- - - 2 Foot Contour Lines
-  City of Columbia
-  Parcels

Parcel Data Source: Boone County Assessor

Created by The City of Columbia - Community Development Department





Case # 186-2025 - 1409 Grindstone Pkwy

Rezoning



- City Sanitary Line — City Storm Lines
- BCRSD Sanitary Line Parcels
- Private Sanitary Line Columbia City Limit

Parcel Data Source: Boone County Assessor

Created by The City of Columbia - Community Development Department

