

Case # 36-2025 - SE corner S. Bethel Church Rd & Route K Annexation Agreement Modification



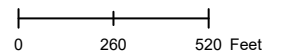
- Columbia City Limit
- City Zoning
- City Property
- Parcels



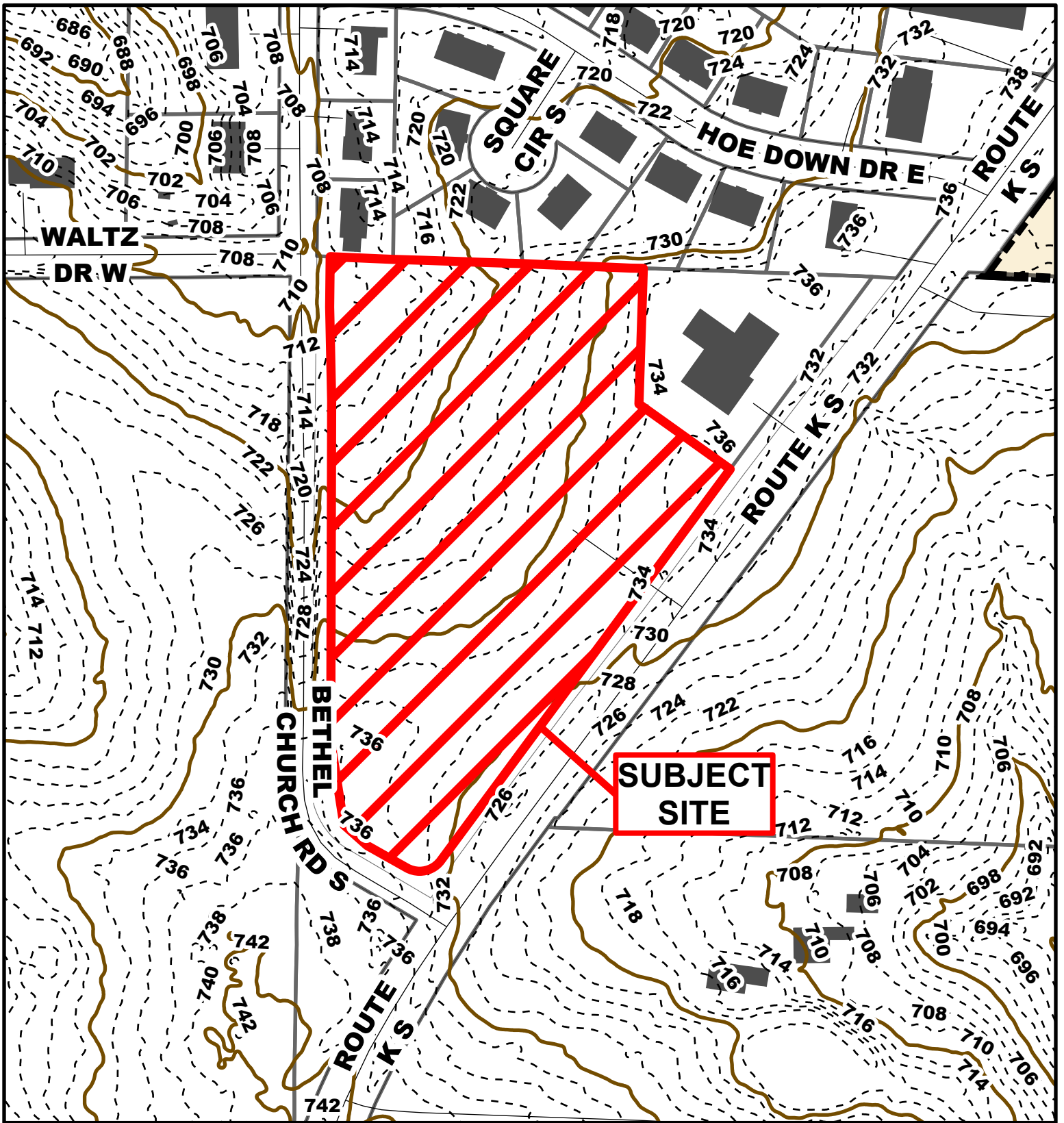
Parcel Data Source: Boone County Assessor

Created by The City of Columbia - Community Development Department

2024 Imagery: NearMap



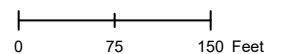
Source: Nearmap. <https://www.nearmap.com/us/en>

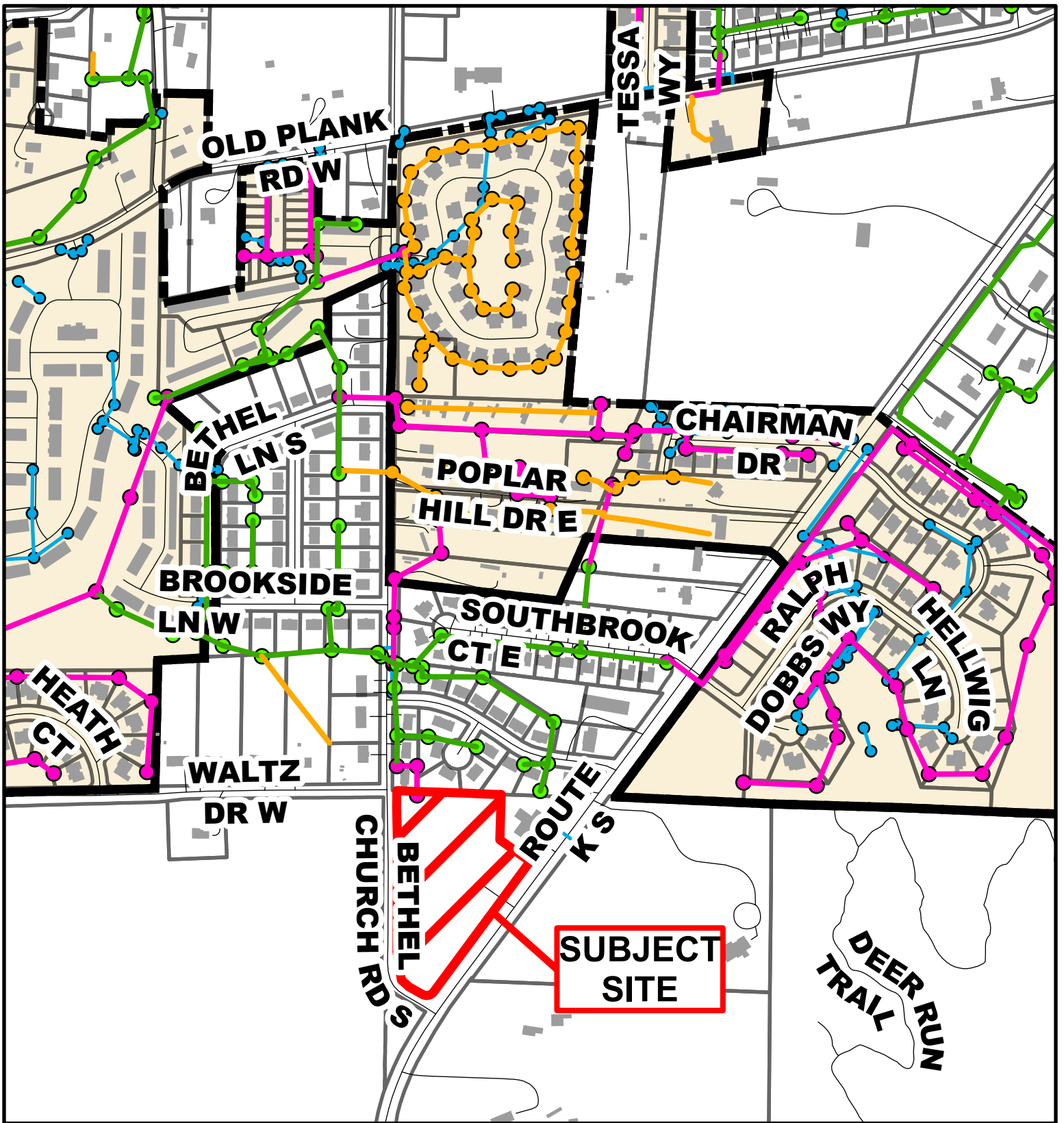


Case # 36-2025 - SE corner S. Bethel Church Rd & Route K Annexation Agreement Modification



- 10 Foot Contour Lines
- City of Columbia
- 2 Foot Contour Lines
- Parcels





Case # 36-2025 - SE corner S. Bethel Church Rd & Route K

b



- City Sanitary Line
- BCRSD Sanitary Line
- Private Sanitary Line
- City Storm Lines
- Parcels
- Columbia City Limit

N

