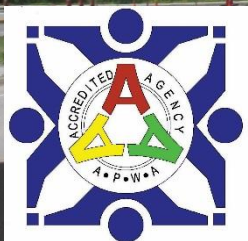


# Public Works Street and Sidewalk FY 2023 CIP Construction Projects

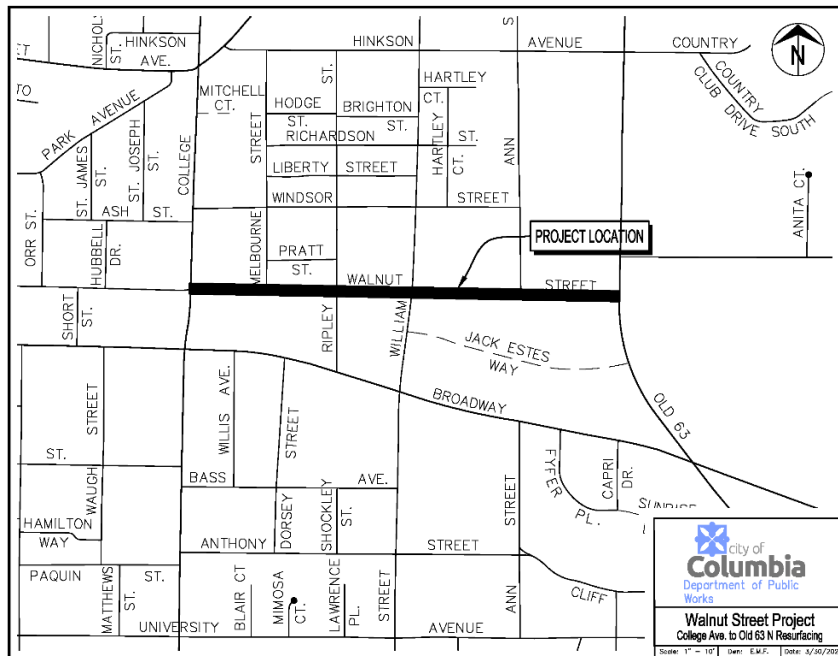


May 2022

# Walnut Street Improvements

(College to Old Highway 63)

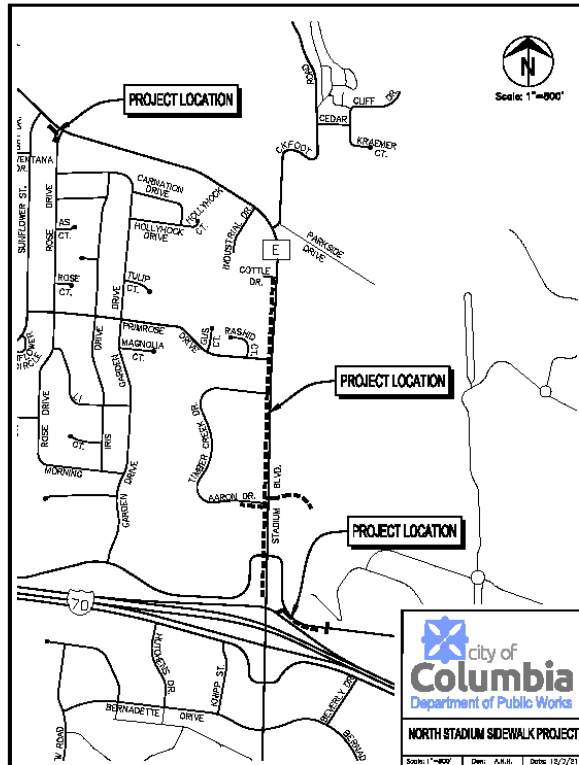
- *Curb, gutter, sidewalk, and subgrade replacement.*
- *Asphalt overlay.*



# North Stadium Sidewalk

(I-70 Overpass to Break Time)

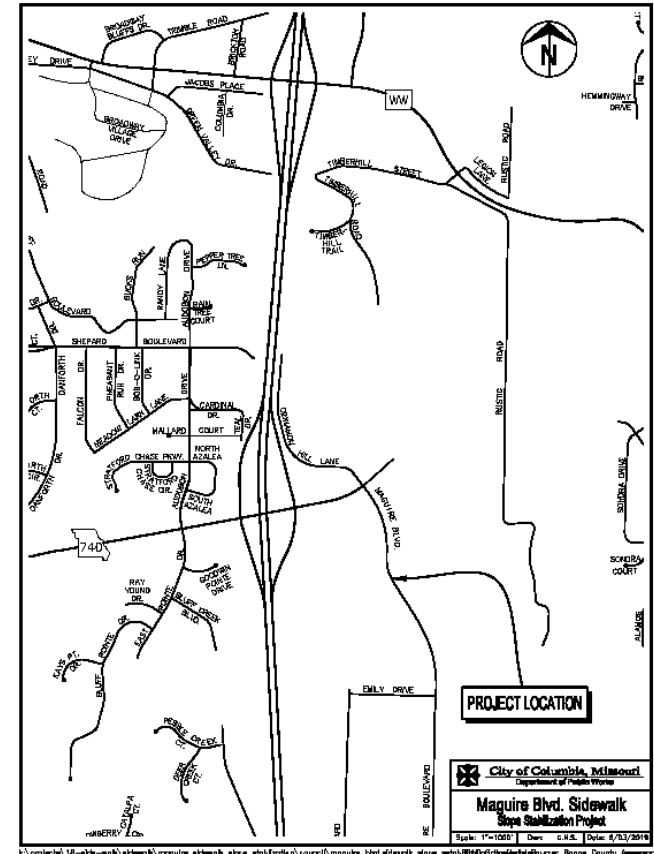
- Sidewalk construction west side of Stadium to fill in sidewalk gaps.
- Crossing/sidewalk connection to Cosmo Fitness Trail.
- Sidewalk connection at Rose.
- Crossing/sidewalk connection along Business Loop to the park.



# Maguire Blvd Slope Stabilization

(Between the two bridges/Both sides of road)

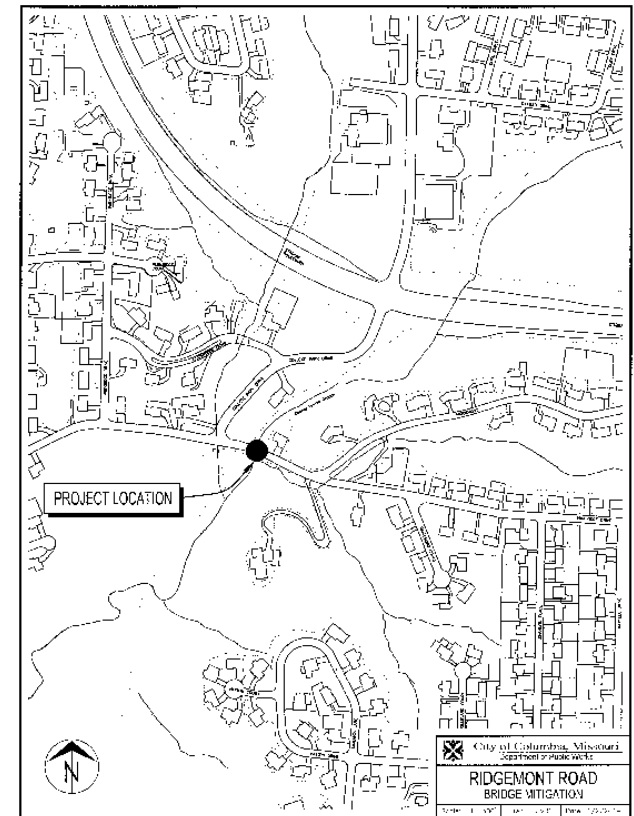
- *Rock cut slope stabilization.*
- *Sidewalk replacement.*



# Ridgemont Bridge Replacement

(East of College Park)

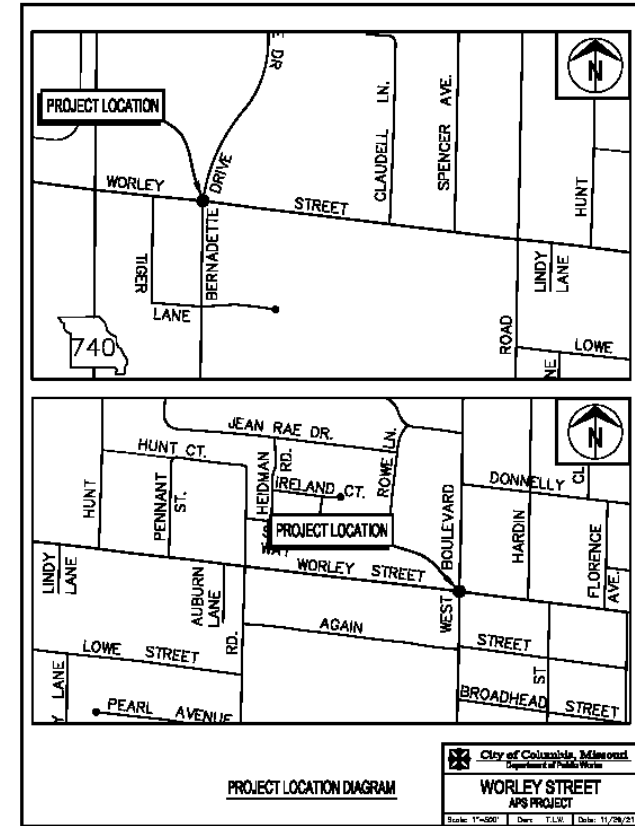
- *Bridge replacement over County House Branch to remove the 3-ton restriction.*



City of Columbia, Missouri  
Department of Public Works  
RIDGEMONT ROAD BRIDGE MITIGATION  
Scale: 1" = 50' (1" = 100' New 12/20/14)

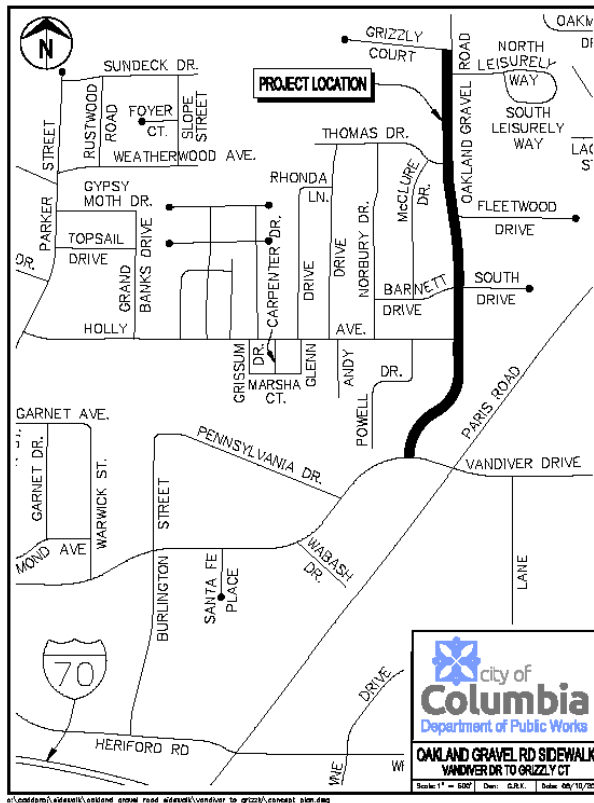
# Worley Intersection Improvements (Worley/West and Worley/Bernadette)

- Signs upgrades to include audible pedestrian signals.
- Sidewalks/crosswalks improvements.



# Oakland Gravel Road Sidewalk (Vandiver to Grizzly)

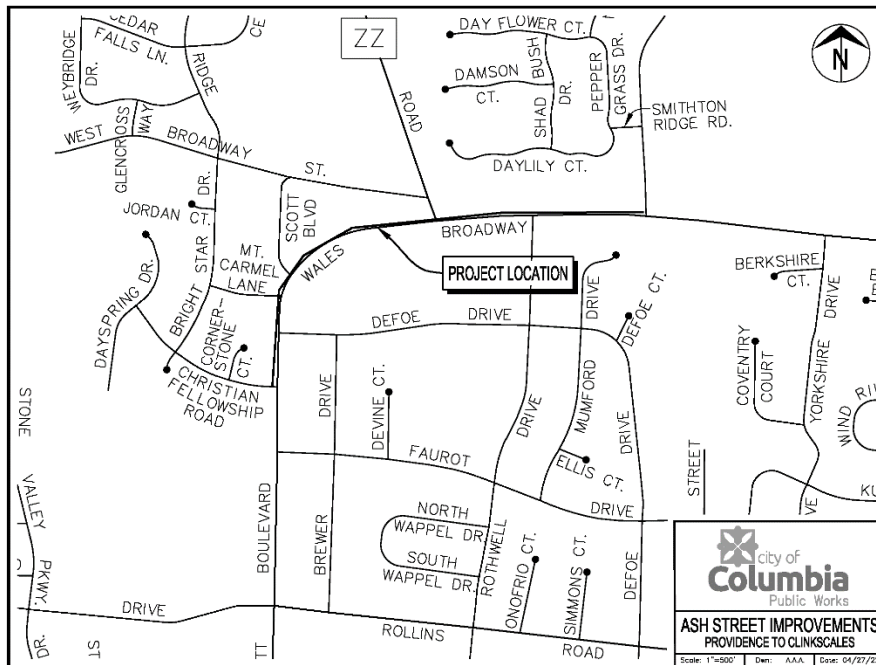
- *Sidewalk construction west side of road to fill in sidewalk gaps.*
- *Crosswalk/pedestrian signal improvement at Vandiver.*



# Scott/Broadway Sidewalk

(Silvey to Christian Fellowship)

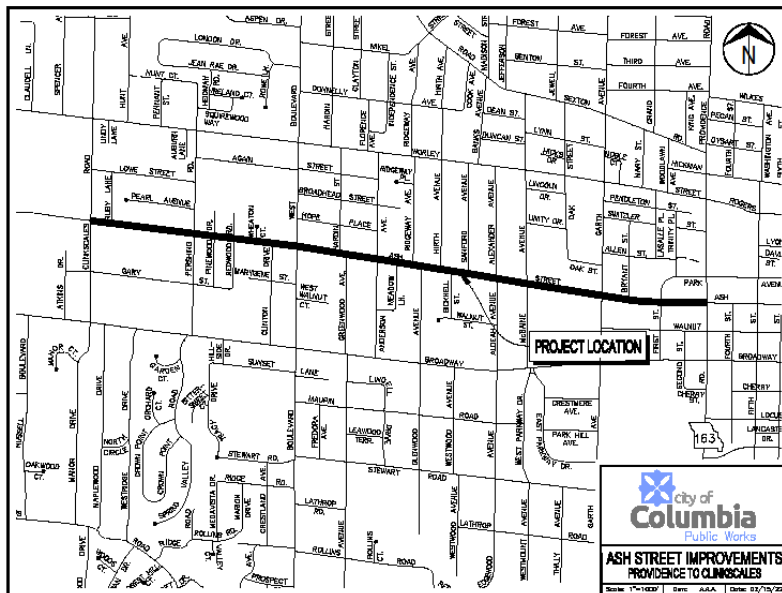
- *Asphalt shoulder removal and concrete sidewalk construction along northwest side of road.*





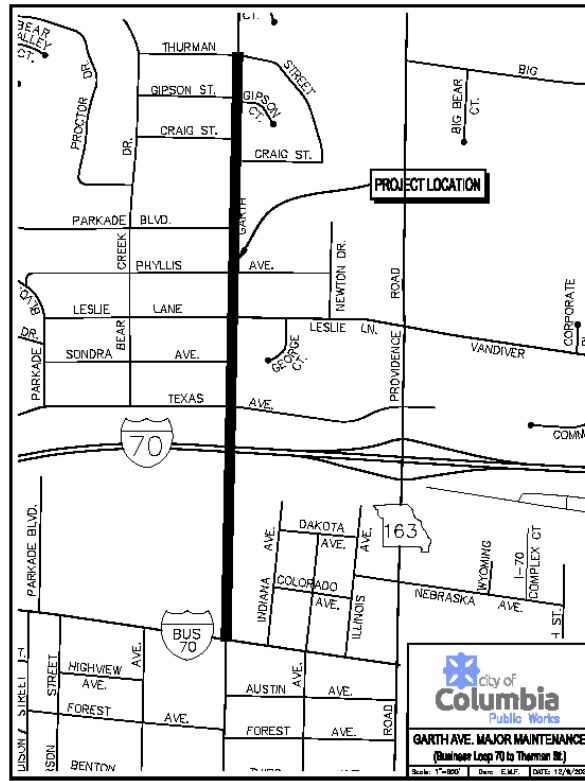
# Ash Street Improvement (Clinkscales to Providence)

- *Non-motorized improvements.*
- *Intersection improvements.*
- *Construction 2024.*



# Garth Avenue Improvements (Business Loop to Thurman)

- *Concrete panel repair.*
- *Asphalt overlay.*
- *Sidewalk repair.*
- *Pedestrian intersection crossing improvements.*
- *Construction 2024.*



# FY 2023 - Traffic Calming Projects

- Ridgefield Road/Ridgemont
- Audubon Drive/Shepard Boulevard
- Manor Drive
- Northland Drive
- Russell Boulevard
- South Garth Avenue

