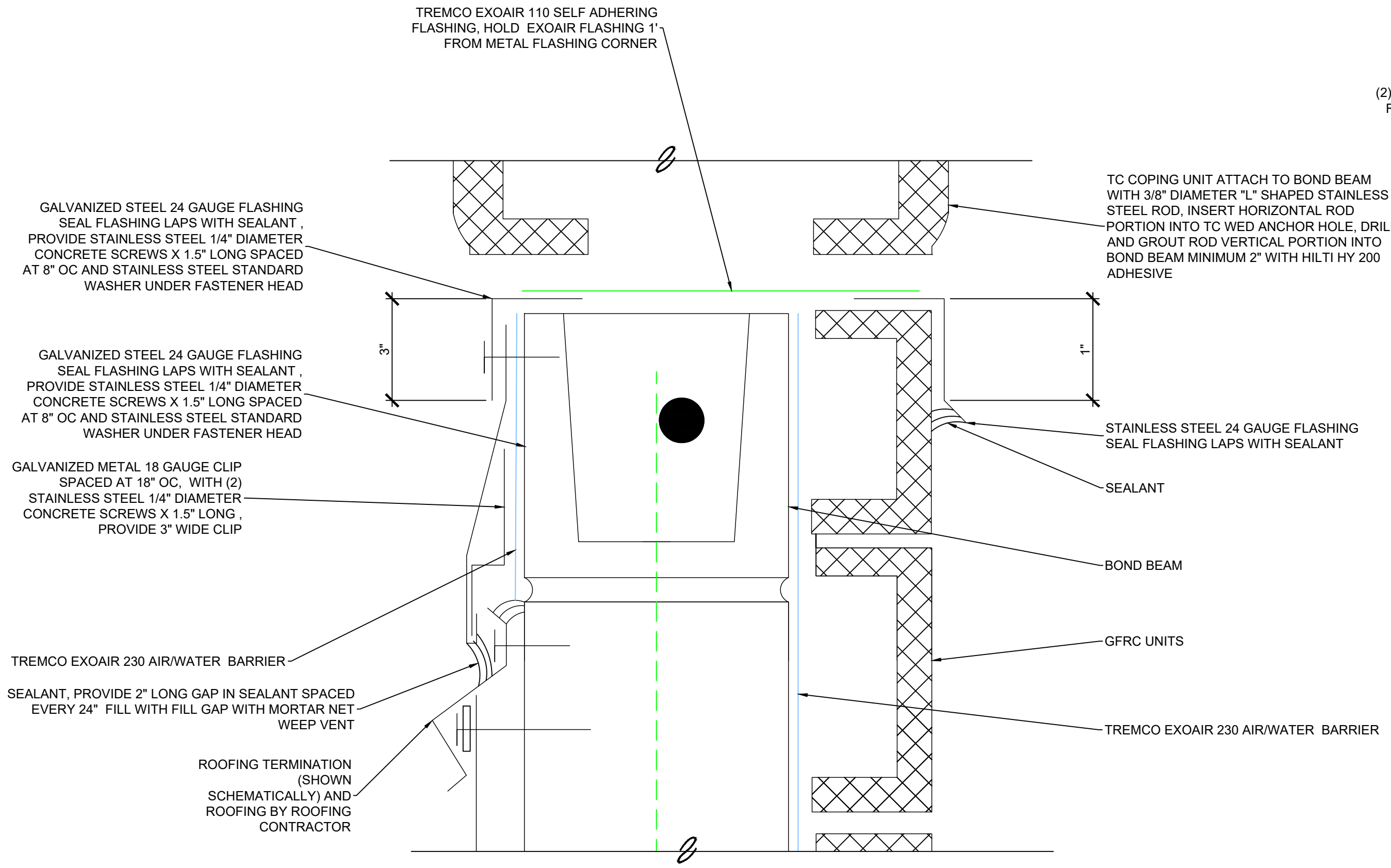
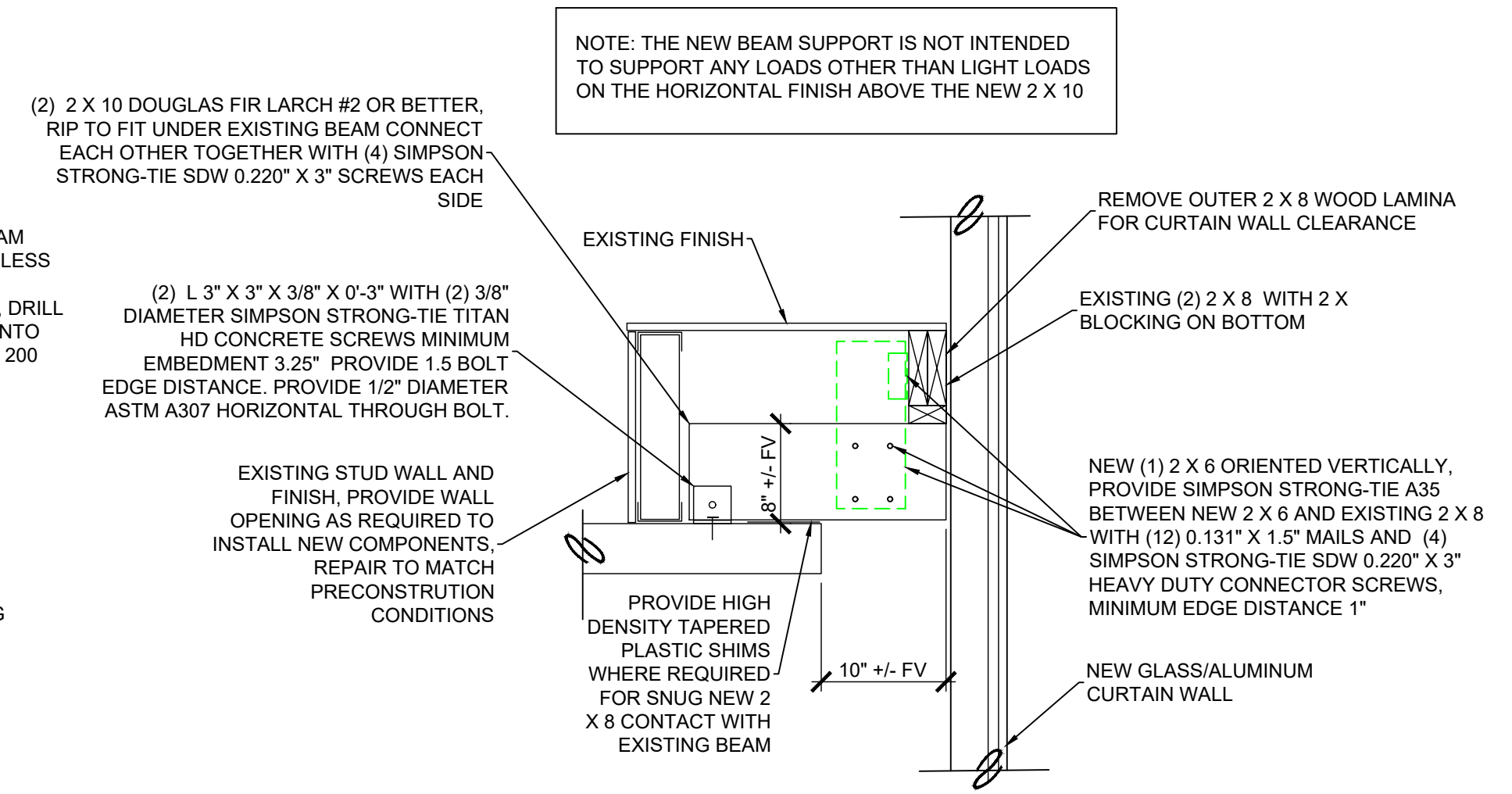


SCHEMATIC SECTION THROUGH SOUTH PARAPET WALL 1/7
NOT TO SCALE

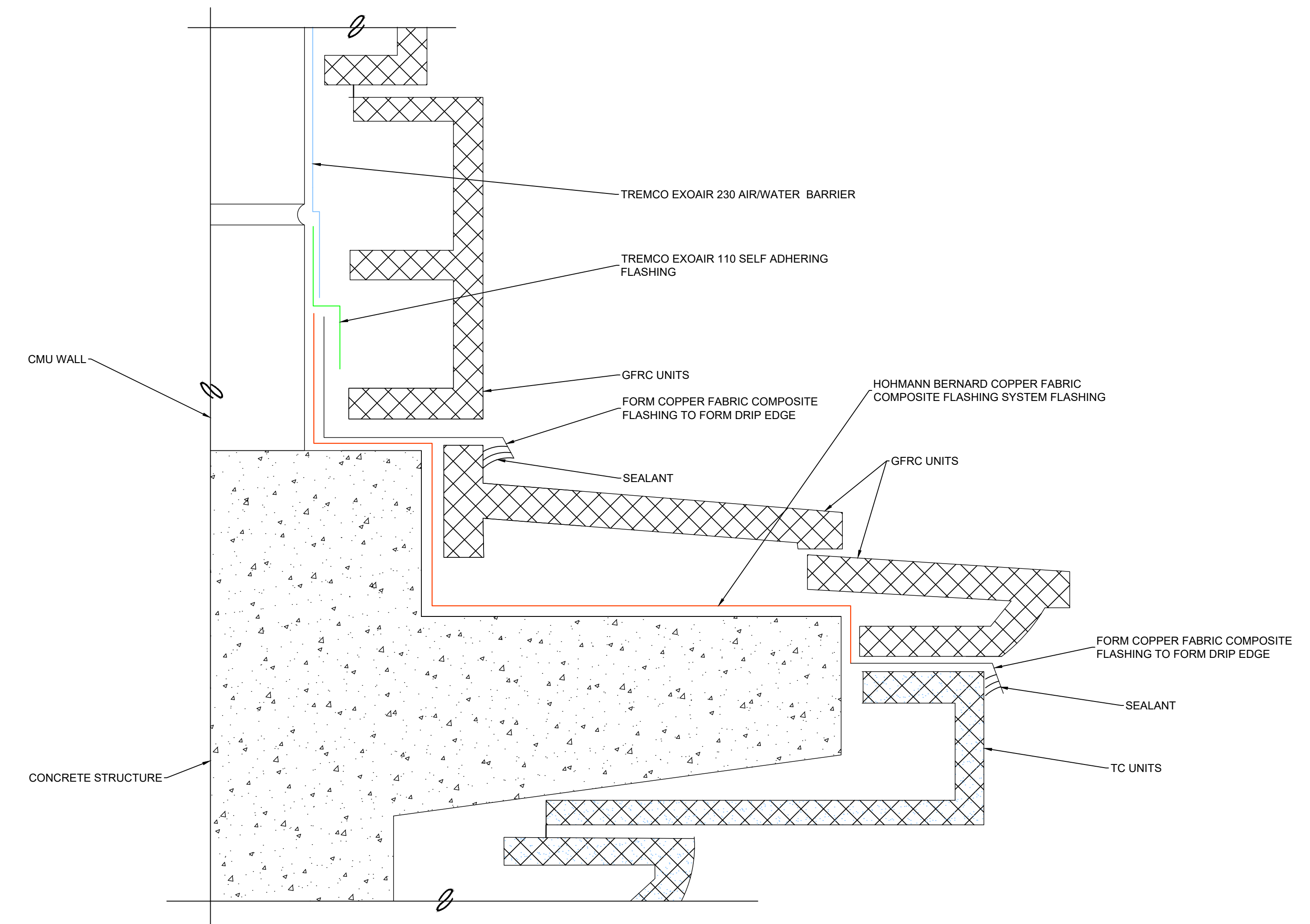
- 1/7 NOTES
- DEMOLISH EXISTING CLAY BRICK PARAPET WALL. PROVIDE 8" NORMAL WEIGHT PARTIALLY GROUTED WALL WITH #4 VERTICALLY SPACED AT 32" OC WITH BAR IN CENTER OF CMU CELL. GROUT BAR INTO EXISTING SOUND CONCRETE STRUCTURE MINIMUM 5.5" WITH HILTI HY 200 ADHESIVE. PROVIDE (1) #4 VERTICAL IN EACH END CELL BETWEEN WALL CONTRACTION JOINTS. PROVIDE 8" BOND BEAM TOP OF ALL WALLS WITH (1) #4 HORIZONTAL. PROVIDE LADDER TYPE JOINT REINFORCEMENT CONSISTING OF (2) WIRES EACH MINIMUM W 1.7 DIAMETER. SPACE REINFORCEMENT VERTICALLY AT 16" OC. PROVIDE VERTICAL FULL CMU DEPTH CONTRACTION JOINTS NOT MORE THAN 12'-0" OC. PROVIDE FOAM CONTRACTION JOINT FILLER AND TREMCO DYMNIC 100 SEALANT BOTH SIDES OF WALL. COORDINATE CMU CONSTRUCTION WITH ENGINEER AT EAST AND WEST WALL INTERSECTION WITH EXISTING MASONRY WALLS THAT REMAIN. BASED ON SITE CONDITIONS. ROUGHEN CONCRETE SLAB UNDER CMU TO PROVIDE A MINIMUM 1/4" ROUGHNESS AMPLITUDE.
 - GFRG UNITS SHOWN SCHEMATICALLY, UNIT ANCHORS NOT SHOWN.



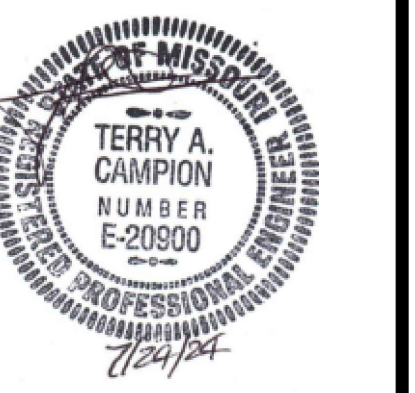
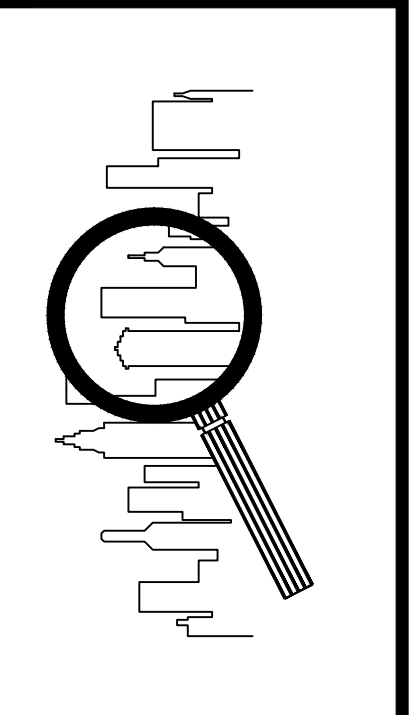
SECTION 2/7
NOT TO SCALE



SCHEMATIC SECTION THROUGH SOUTH SECOND FLOOR BEAM AT CURTAIN WALL 4/7
NOT TO SCALE



SECTION 3/7
NOT TO SCALE



DRAWN BY:	DATE: 7-24-24
CHECKED BY:	DATE:
FILENAME:	

REVISIONS:	
Δ	
Δ	
Δ	
Δ	
Δ	
SHEET NO.:	