

Revision	By	Date	No.

EAST WALNUT TRAFFIC CALMING

Plan - Old 63 to 2311 E Walnut St

Mission
Provide safe, sustainable infrastructure that promotes positive communities.

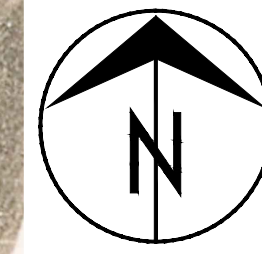
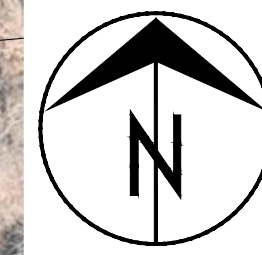
701 East Broadway
P.O. Box 6015
Columbia, MO 65205
(573) 875-2493



Shane Steven Creech
Registered Professional Engineer
PE-2007011061

File No.
Scale: 1" = 30'
Date: 9/12/2024
Des. A.S.B.
Dwn. A.S.B.
Chk. J.D.R.

o:\cadd\proj\traffic\calming\east_walnut_traffic_calming.dwg



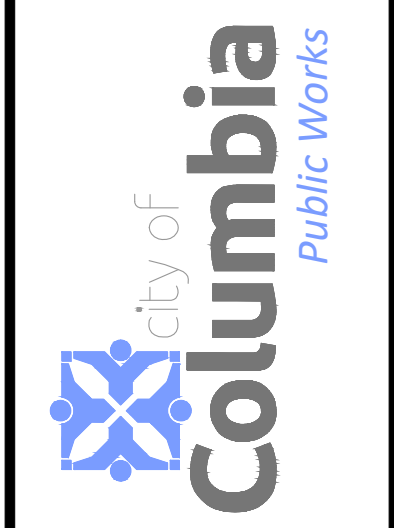
No.	Date	By	Revision

EAST WALNUT TRAFFIC CALMING

Plan - 2311 E Walnut St to Terminus

Mission
Provide safe, sustainable infrastructure that promotes positive communities.

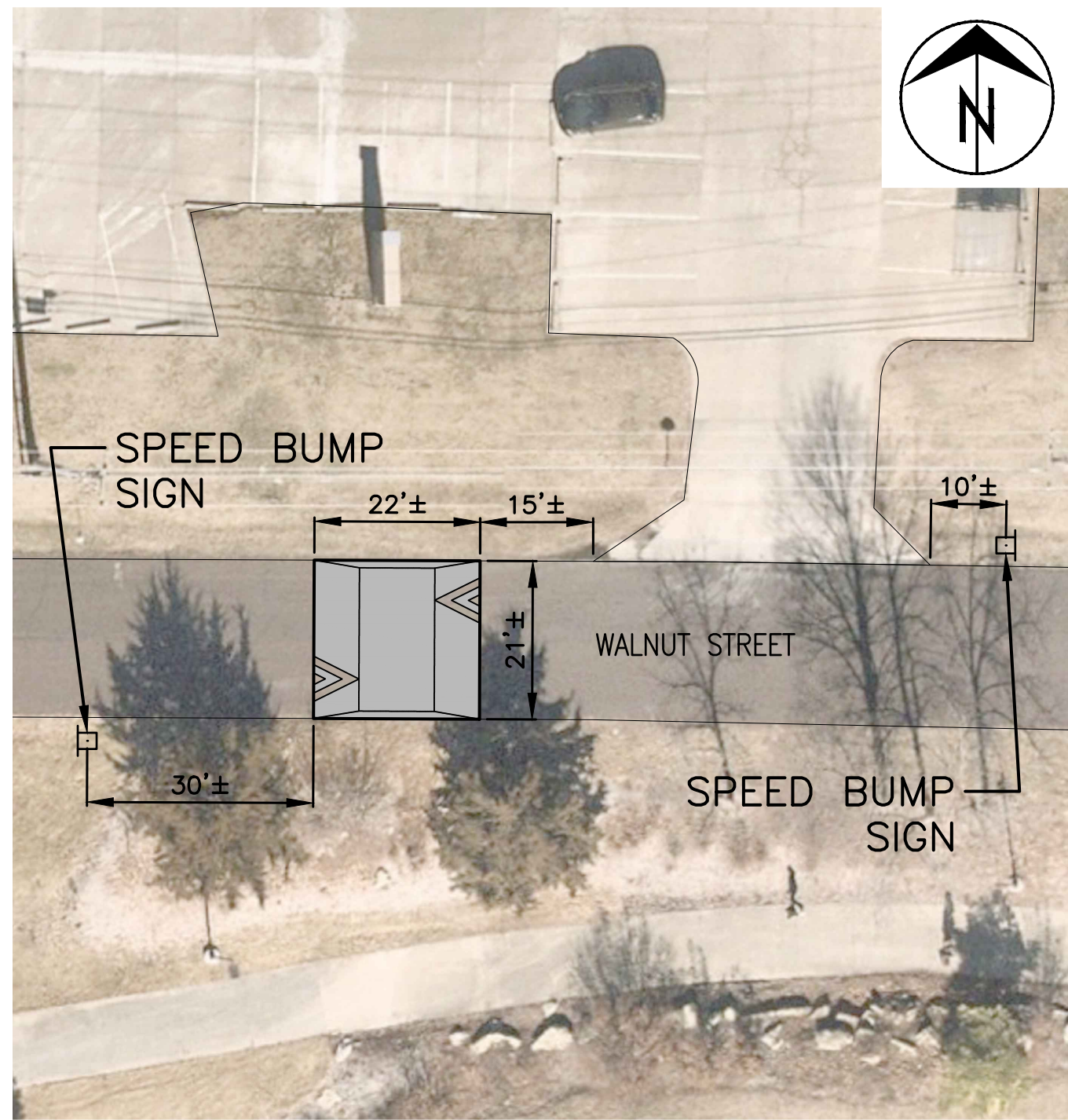
701 East Broadway
P.O. Box 6015
Columbia, MO 65205
(573) 875-2439



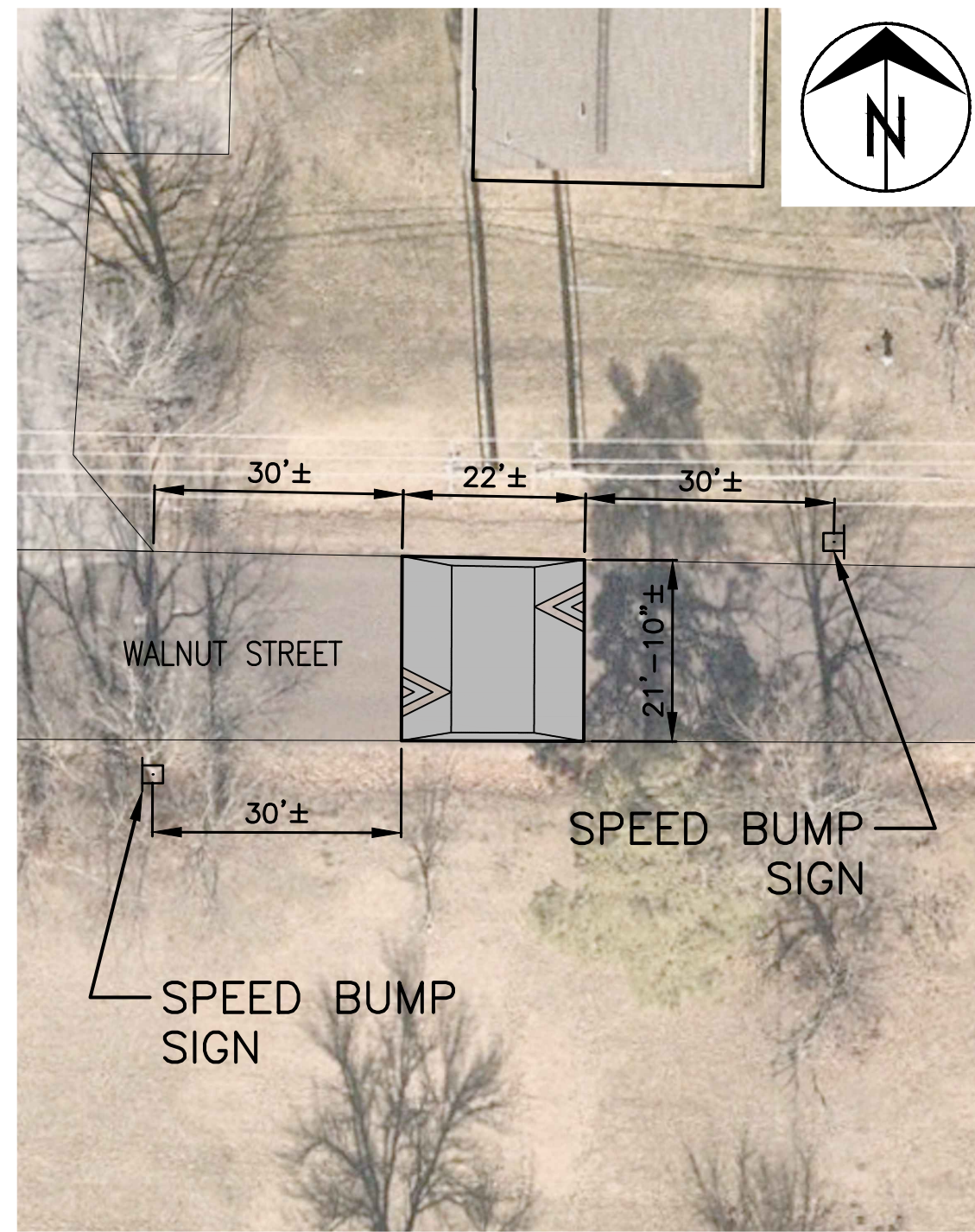
Shane Steven Creech
Registered Professional Engineer
PE-2007011061

File No.	
Scale:	1" = 30'
Date:	9/12/2024
Des.	A.S.B.
Dwn.	A.S.B.
Chk.	J.D.R.

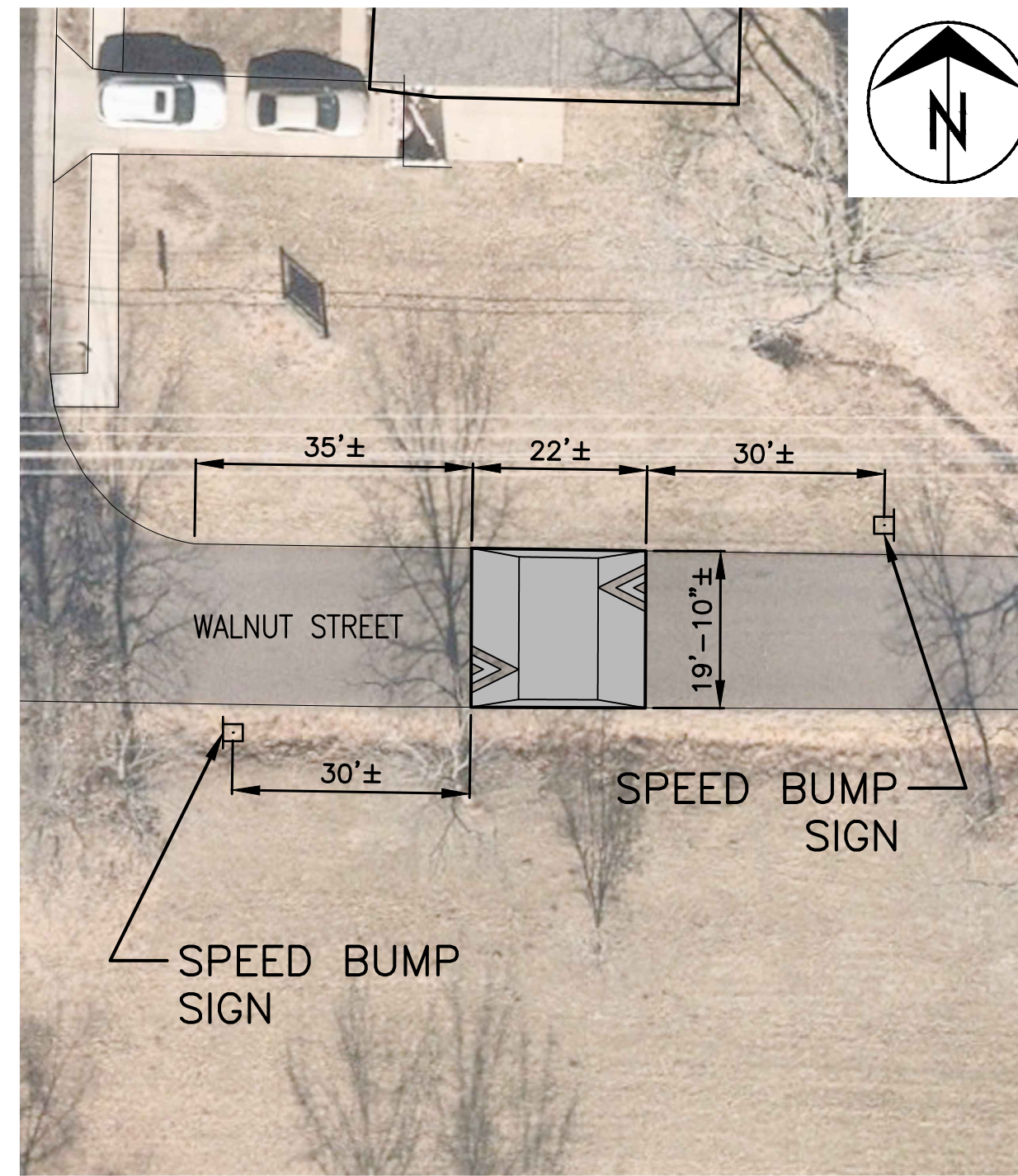
o:\cadd\proj\traffic\calming\east_walnut_traffic_calming.dwg



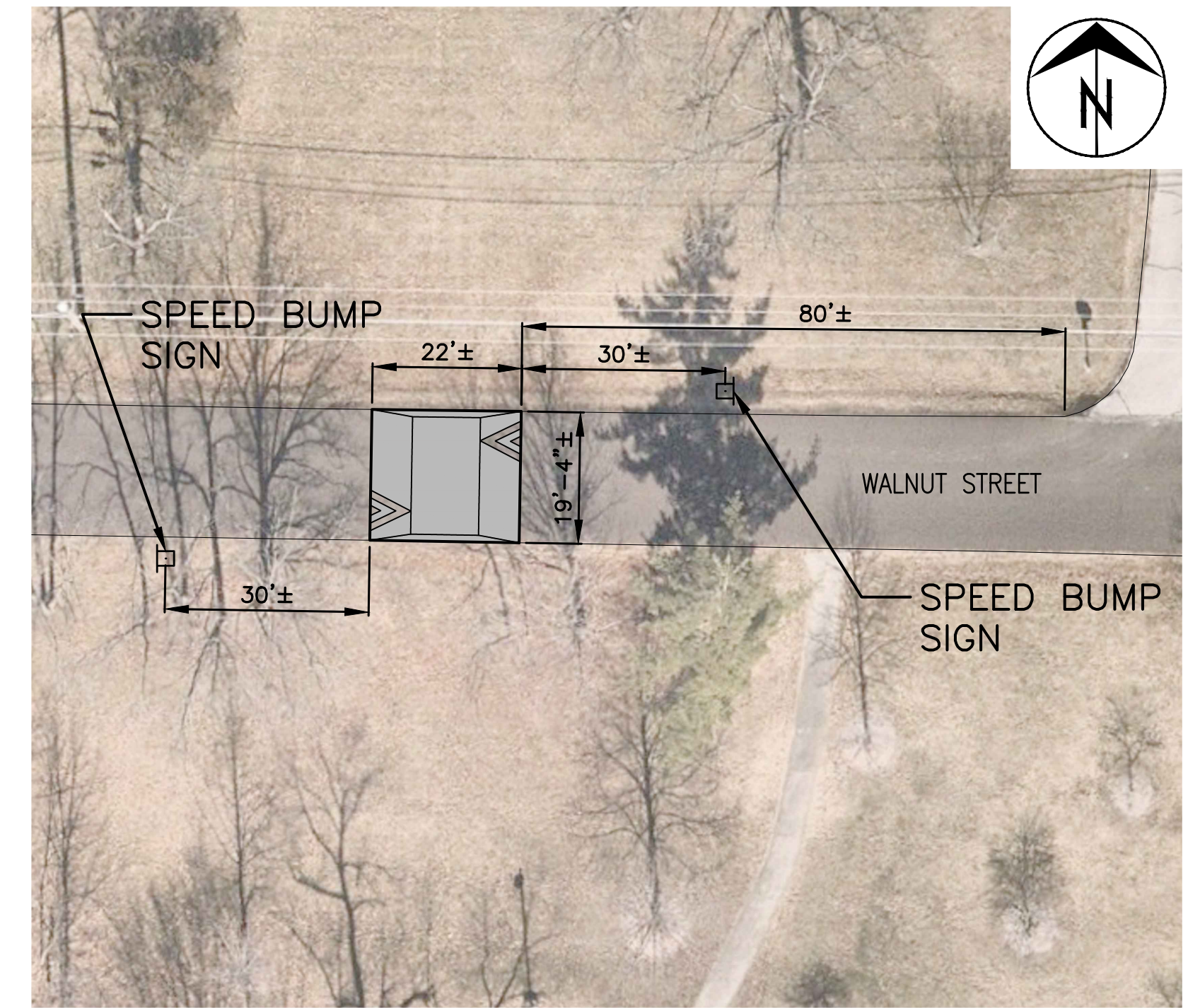
1805 WALNUT STREET
1" = 20'



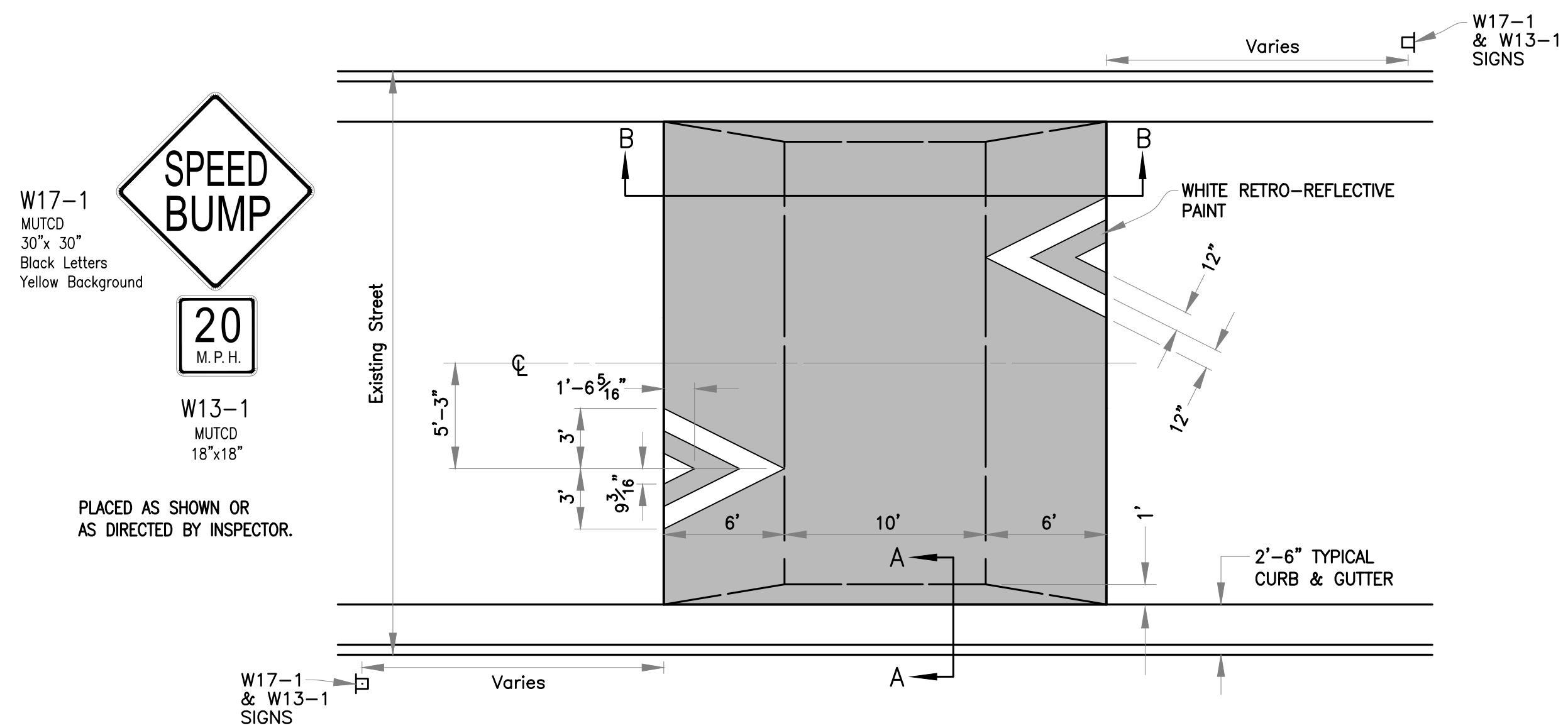
1913 WALNUT STREET
1" = 20'



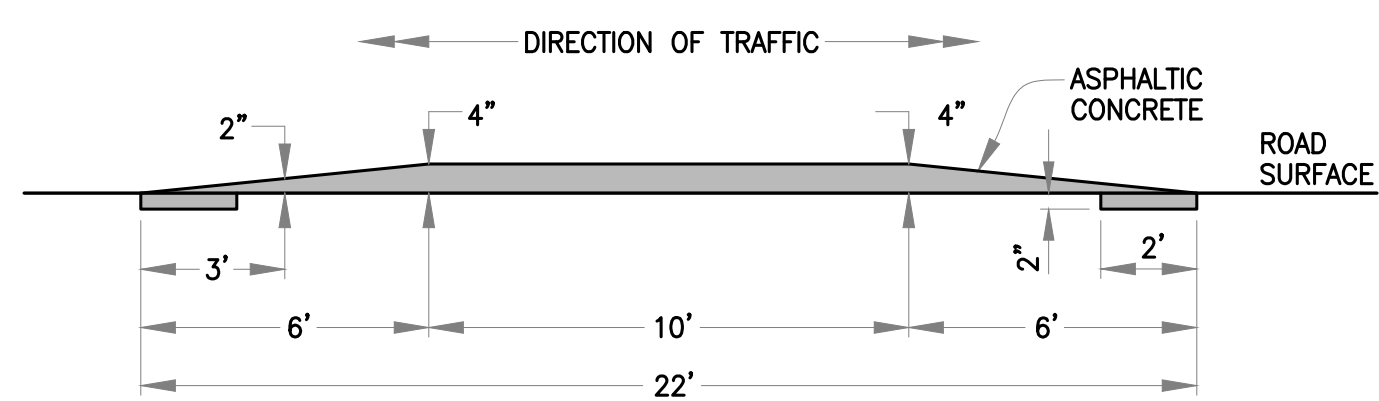
200 ANITA COURT
1" = 20'



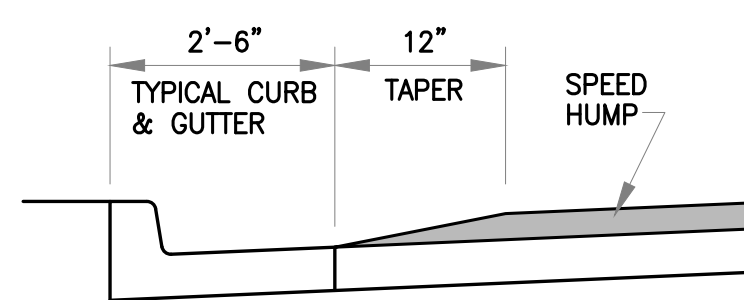
2109 WALNUT STREET
1" = 20'



PLAN
NOT TO SCALE

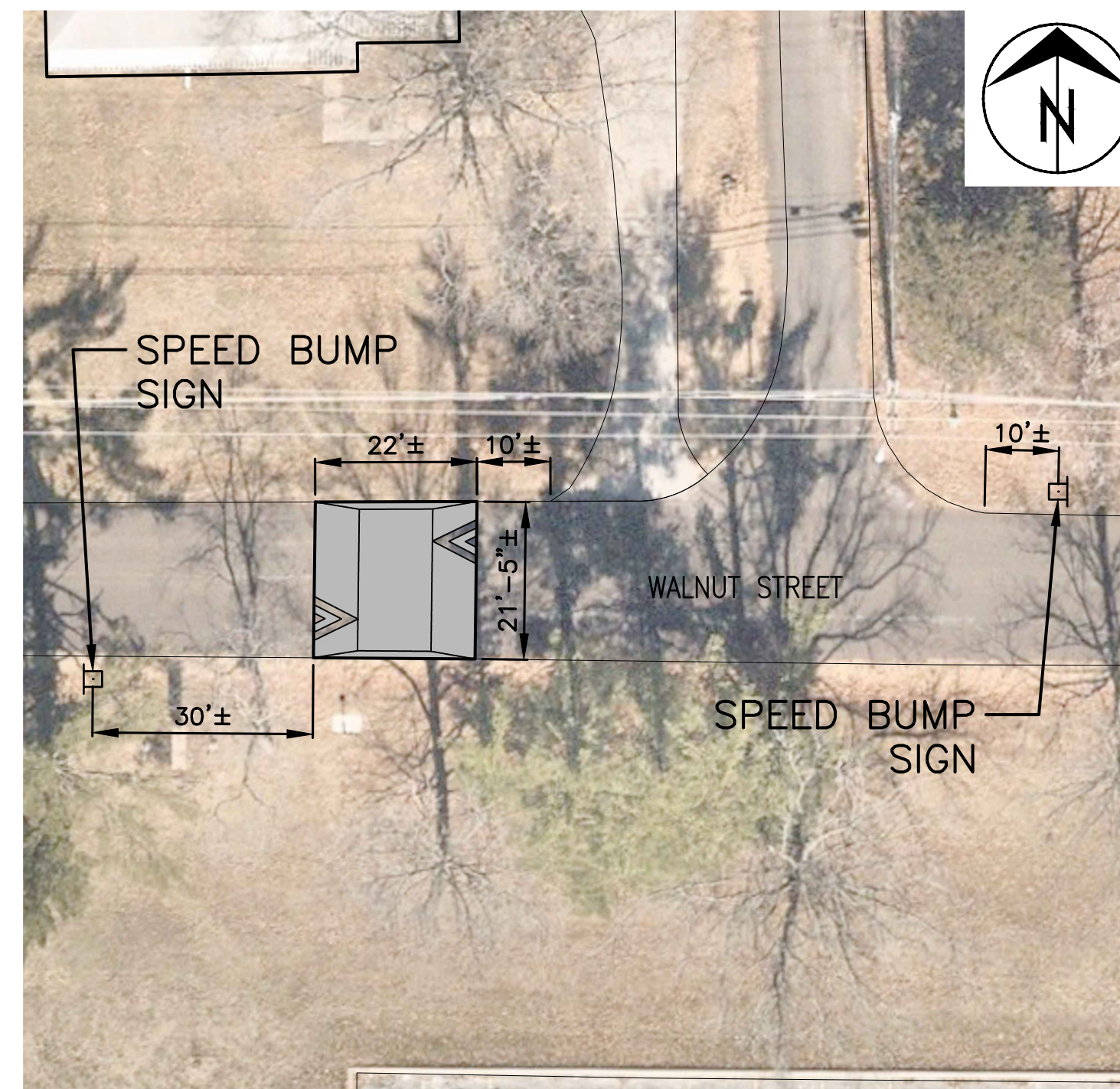


SECTION B-B
NOT TO SCALE

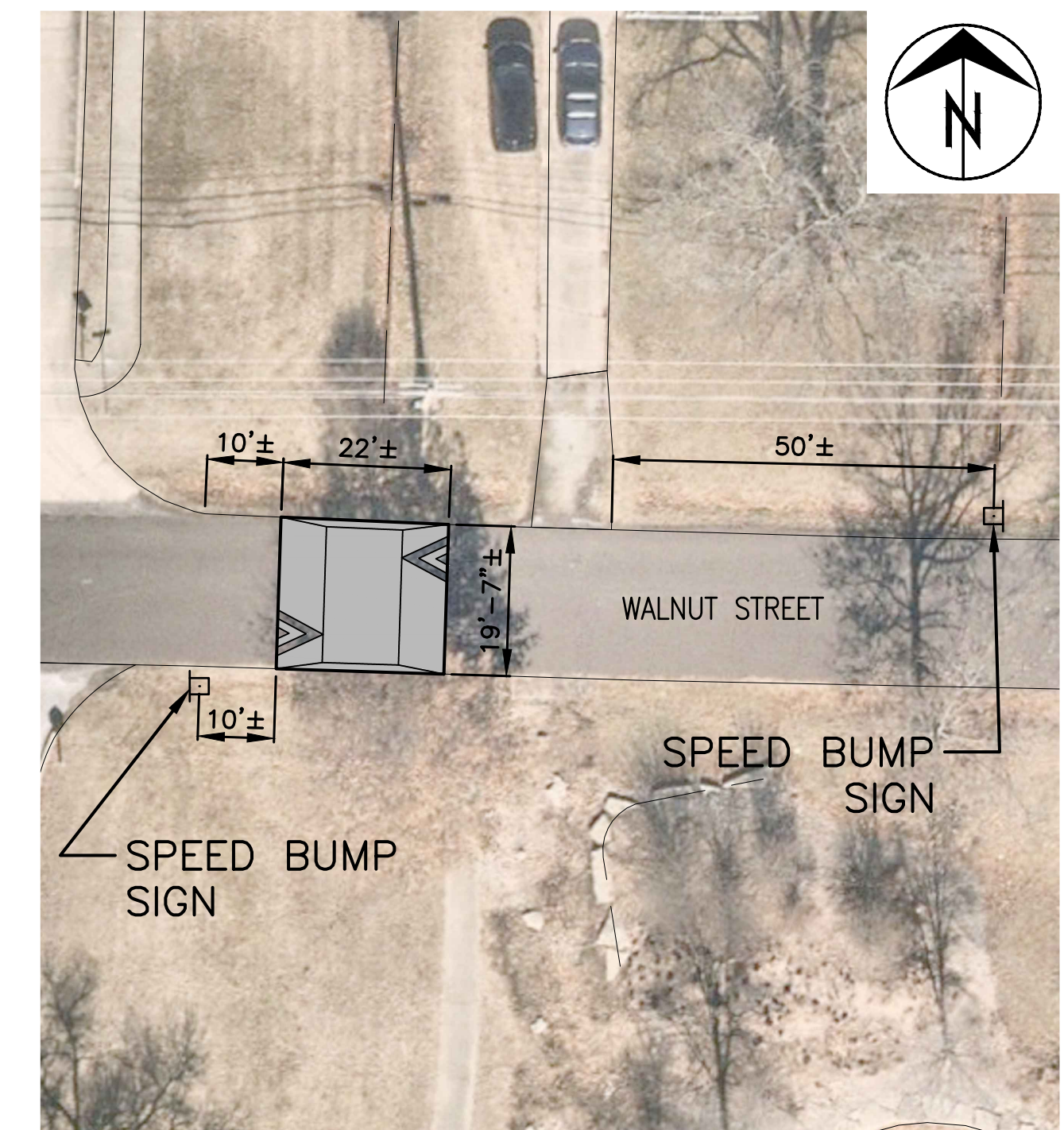


SECTION A-A
NOT TO SCALE

SPEED HUMP
NOT TO SCALE



2211 WALNUT STREET
1" = 20'



2401 WALNUT STREET
1" = 20'

Revision	
By	
Date	
No.	

EAST WALNUT TRAFFIC CALMING
Speed Humps

Mission
Provide safe, sustainable infrastructure that promotes positive communities.
701 East Broadway
P.O. Box 6015
Columbia, MO 65205
(573) 875-2493



Shane Steven Creech
Registered Professional Engineer
PE-2007011061

File No.	
Scale:	As Shown
Date:	9/12/2024
Des.	A.S.B.
Dwn.	A.S.B.
Chk.	J.D.R.