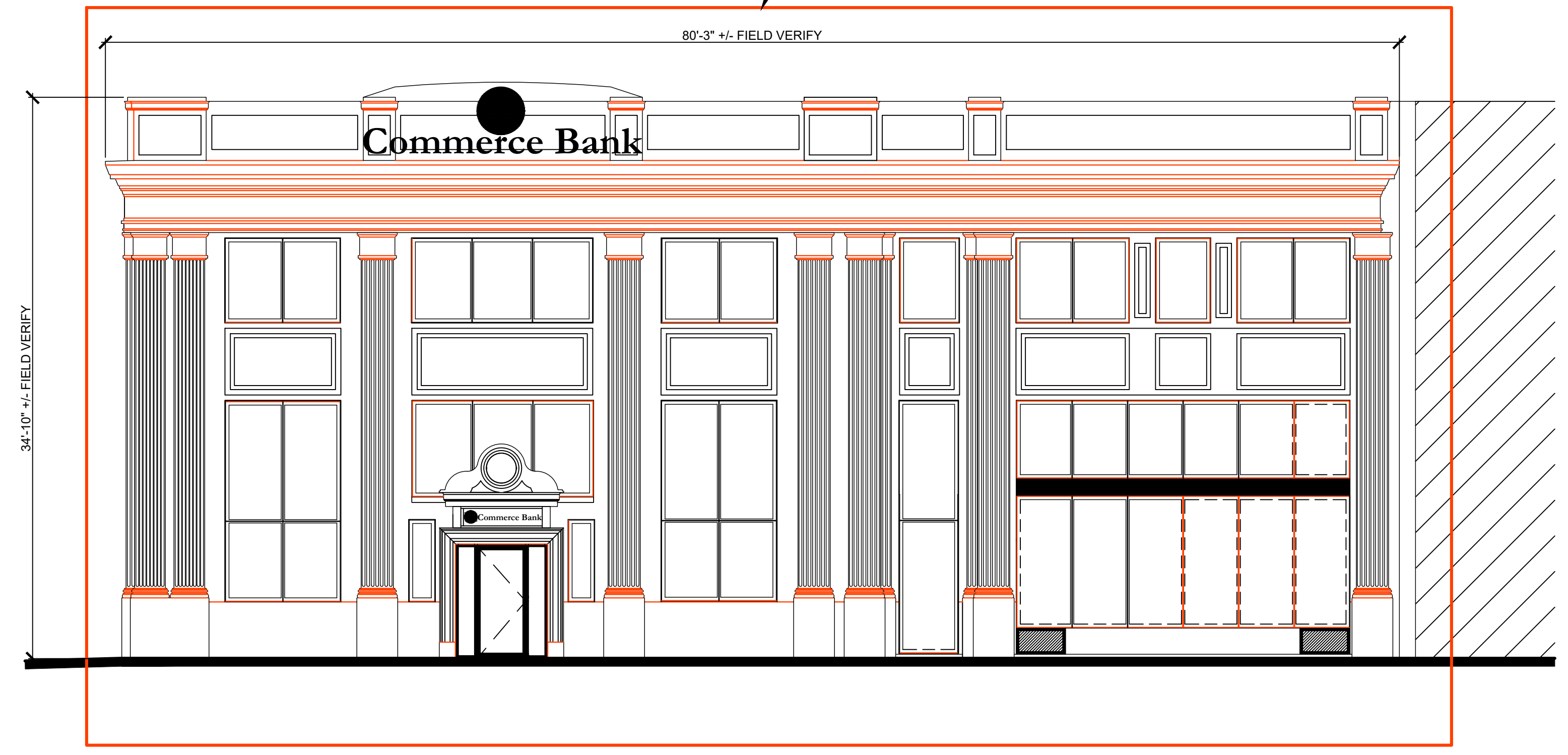
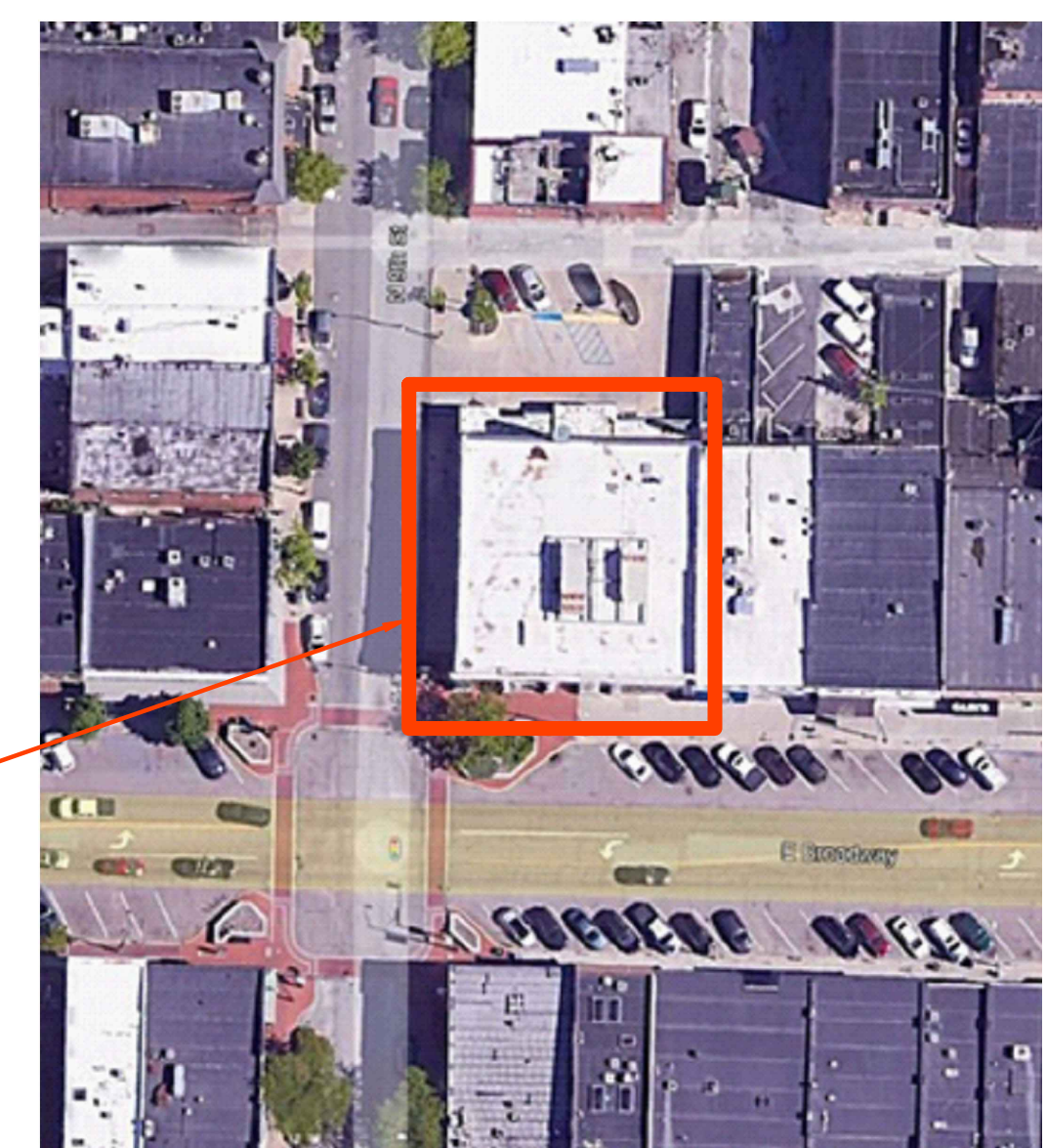


SCHMATIC WEST ELEVATION ①
NOT TO SCALE



SCHMATIC SOUTH ELEVATION ②
NOT TO SCALE



SITE PHOTOGRAPH ③
NOT TO SCALE
IMAGE BY GOGGLE



SITE PHOTOGRAPH ④
NOT TO SCALE
IMAGE BY GOGGLE

- COLOR LINES DENOTE EXTENT OF SIDEWALK PROTECTION, AS A MINIMUM, PROVIDE THE FOLLOWING.
1. METAL WALK-THROUGH SCAFFOLDING WITH WOOD DECKING ABOVE SIDEWALK.
 2. PROVIDE STREET SIDE MINIMUM 4'-0" HIGH BARRIER WALL ON FIRST LEVEL ABOVE STREET TO DETER SCAFFOLD CLIMBERS.
 3. PROVIDE STREET LEVEL SCAFFOLD LEG COVER CONSISTING OF WOOD, HEAVY REINFORCED FABRIC, SCREEN MESH OR OTHER EFFECTIVE LEG WRAP TO PREVENT CLIMBING SCAFFOLD LEG.

GENERAL NOTES

1. THESE NOTES SHALL BE READ IN CONJUNCTION WITH THE SPECIFICATIONS AND THE DRAWINGS. IN THE EVENT OF A CONFLICT, NOTIFY THE ENGINEER FOR CLARIFICATION.
2. BEFORE EXECUTING ANYTHING HEREIN SHOWING, EXAMINE ACTUAL JOB CONDITIONS. REPORT ANY DISCREPANCY, DIMENSIONAL OR OTHERWISE, BETWEEN DRAWINGS AND ANY OTHER ERROR, OMISSION, OR DIFFICULTY AFFECTING THE WORK TO THE ENGINEER FOR REVIEW PRIOR TO BIDDING. FIELD VERIFY ALL DIMENSIONS AND ELEVATIONS SHOWN ON THE DRAWINGS PRIOR TO BIDDING.
3. ANY CONDITION ENCOUNTERED IN THE EXISTING STRUCTURAL SYSTEM WHICH IS DIFFERENT FROM THAT INDICATED IN DRAWINGS OR WHICH MIGHT CREATE A FAILURE OR HAZARD SHALL BE BROUGHT TO THE IMMEDIATE ATTENTION OF THE ENGINEER.
4. THE EXISTING CONDITIONS INDICATED ON THE DRAWINGS ARE BASED ON SURVEYS MADE BY THE CONSULTANT(S) AS WELL AS ON MATERIAL PROVIDED BY THE OWNER. NO CLAIM IS MADE AS TO ITS COMPLETENESS AND/OR ACCURACY AND MAY NOT BE A COMPLETELY ACCURATE DEPICTION OF EXISTING BUILDING CONDITIONS AND CONFIGURATIONS. FIELD VERIFY EXISTING BUILDING CONDITIONS, DIMENSIONS, AND CONFIGURATIONS PRIOR TO BIDDING. NOTIFY ENGINEER OF DISCREPANCIES FOR REVIEW.
5. ALL DETAILS AND SECTIONS ARE INTENDED TO BE TYPICAL AND SHALL BE CONSTRUED TO APPLY TO ANY SIMILAR SITUATION ELSEWHERE, EXCEPT WHERE A DIFFERENT DETAIL IS SHOWN.
6. THE PLANS ARE BASED ON THE SITE SURVEYS.

DESIGN

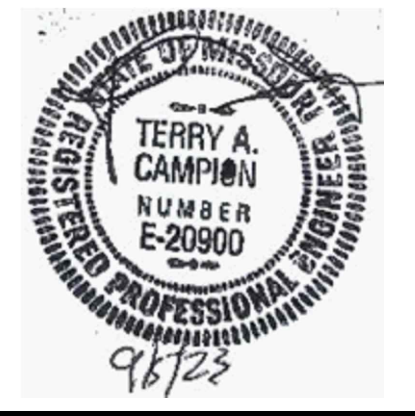
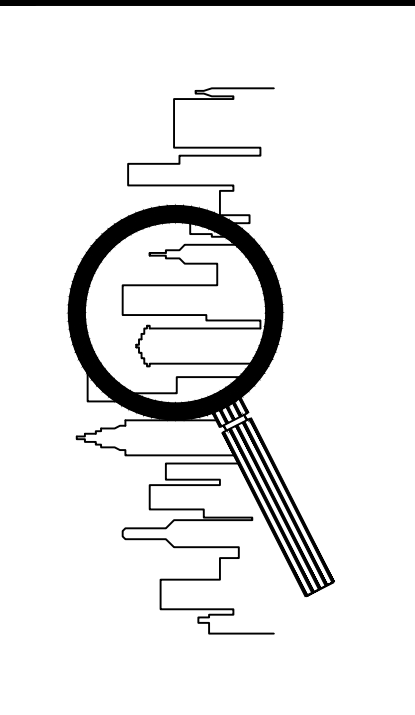
1. CODES, SPECIFICATIONS, AND STANDARDS.
 - a) ALL DESIGN AND CONSTRUCTION SHALL CONFORM TO THE INTERNATIONAL BUILDING CODE 2018 AS AMENDED AND ADOPTED BY THE COLUMBIA, MISSOURI.
2. BUILDING CODE INFORMATION.
 - a) OCCUPANCY GROUP B, CONSTRUCTION TYPE 1A.
 - b) AREA UNDER CONSTRUCTION APPROXIMATELY 9,600 SQUARE FEET.
 - c) BUILDING ADDRESS 901 EAST BROADWAY, COLUMBIA, MISSOURI.
 - d) OWNER: COMMERCE BANK, 1000 WALNUT, KANSAS CITY, MO 64106
 - e) PROJECT NAME: 9TH AND BROADWAY BUILDING EXTERIOR RESTORATION.

ABBREVIATIONS

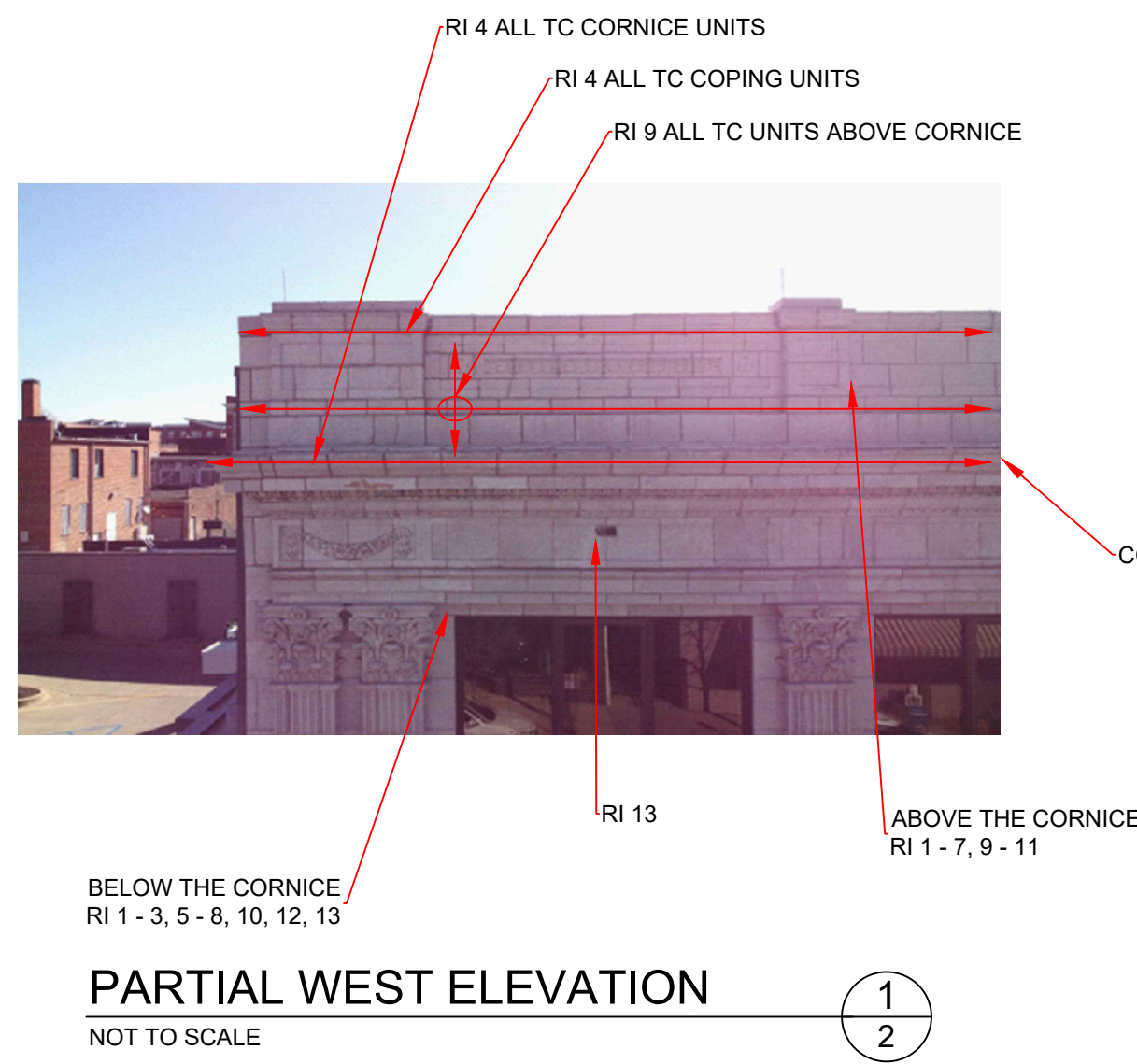
RI = REPAIR ITEM.
MIN = MINIMUM.
MAX = MAXIMUM.
TC = TERRA COTTA.

TC ARMATURE = METAL FABRICATION THAT MAY CANTILEVER DESIGNED TO SUPPORT TERRA COTTA UNITS. THE ARMATURE MAY CONSIST OF METAL PLATES, ANGLES, CHANNELS, EMBEDDED BOLTS AND OTHER METAL.
DOWN STACK TC = DISASSEMBLE TERRA COTTA UNITS TRACKING THE UNI, ITS PLACEMENT AND ANCHORAGE TO ALLOW FOR ITS REINSTALLATION TO MATCH PRECONSTRUCTION CONDITIONS.
UP STACKING TC = REASSEMBLY OF THE TC UNITS TO THEIR ORIGINAL POSITION AND ANCHORAGE.

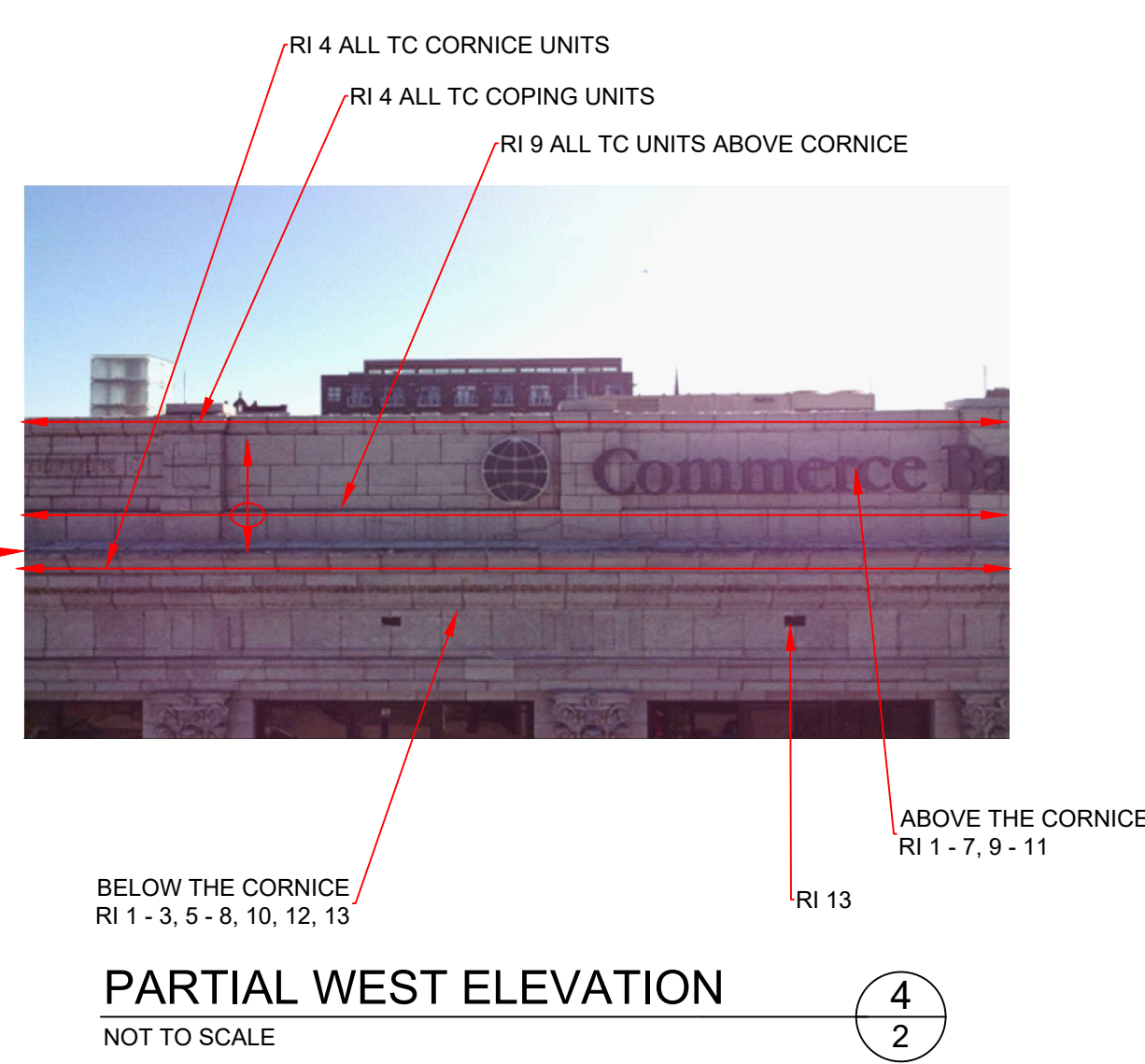
NOT ALL ABBREVIATIONS SHOWN INQUIRE WITH ENGINEER FOR OTHER



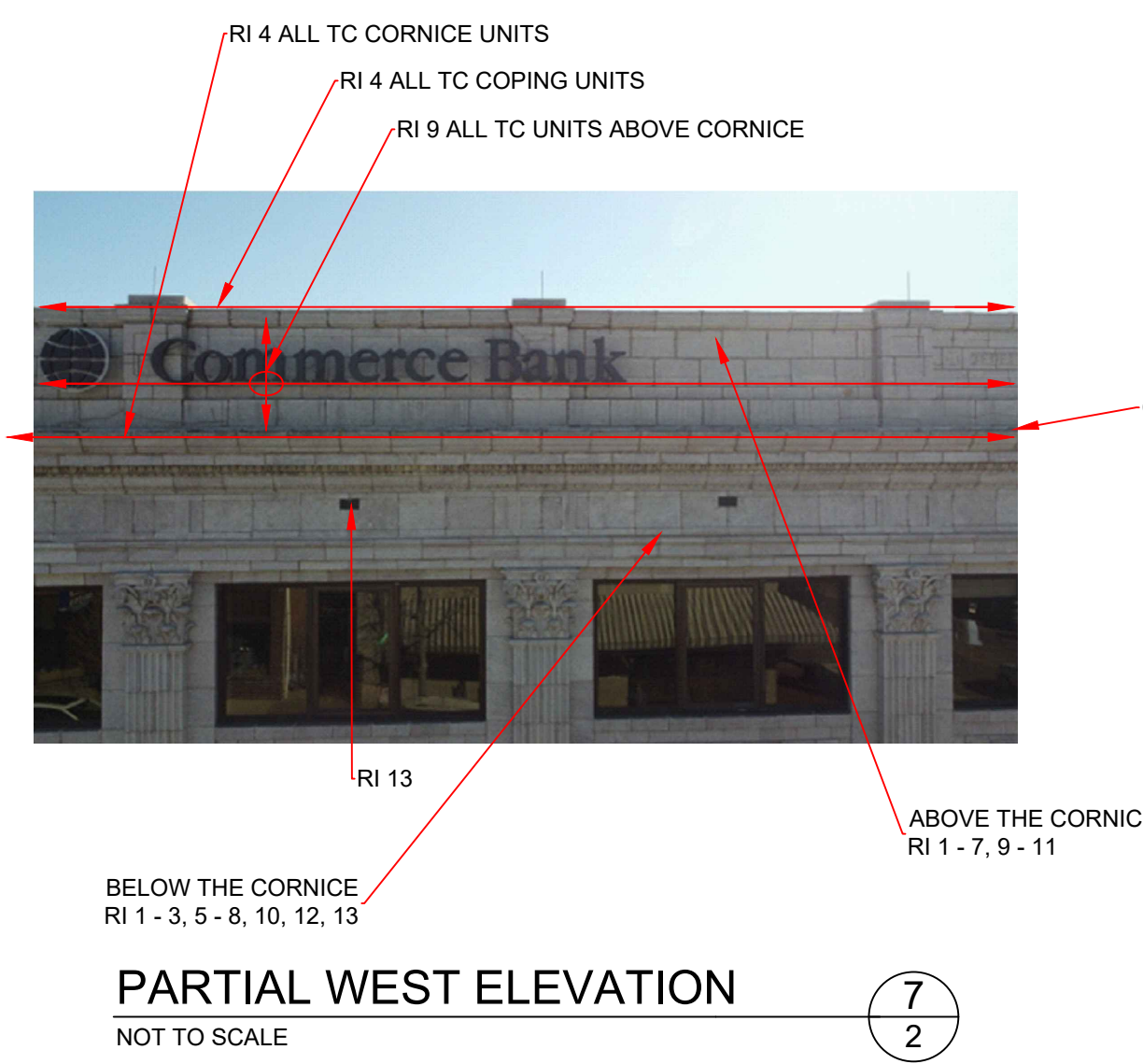
DRAWN BY:	DATE: 9-5-23
CHECKED BY:	DATE:
FILENAME:	
REVISIONS:	
△	
△	
△	
△	
△	
SHEET NO.:	



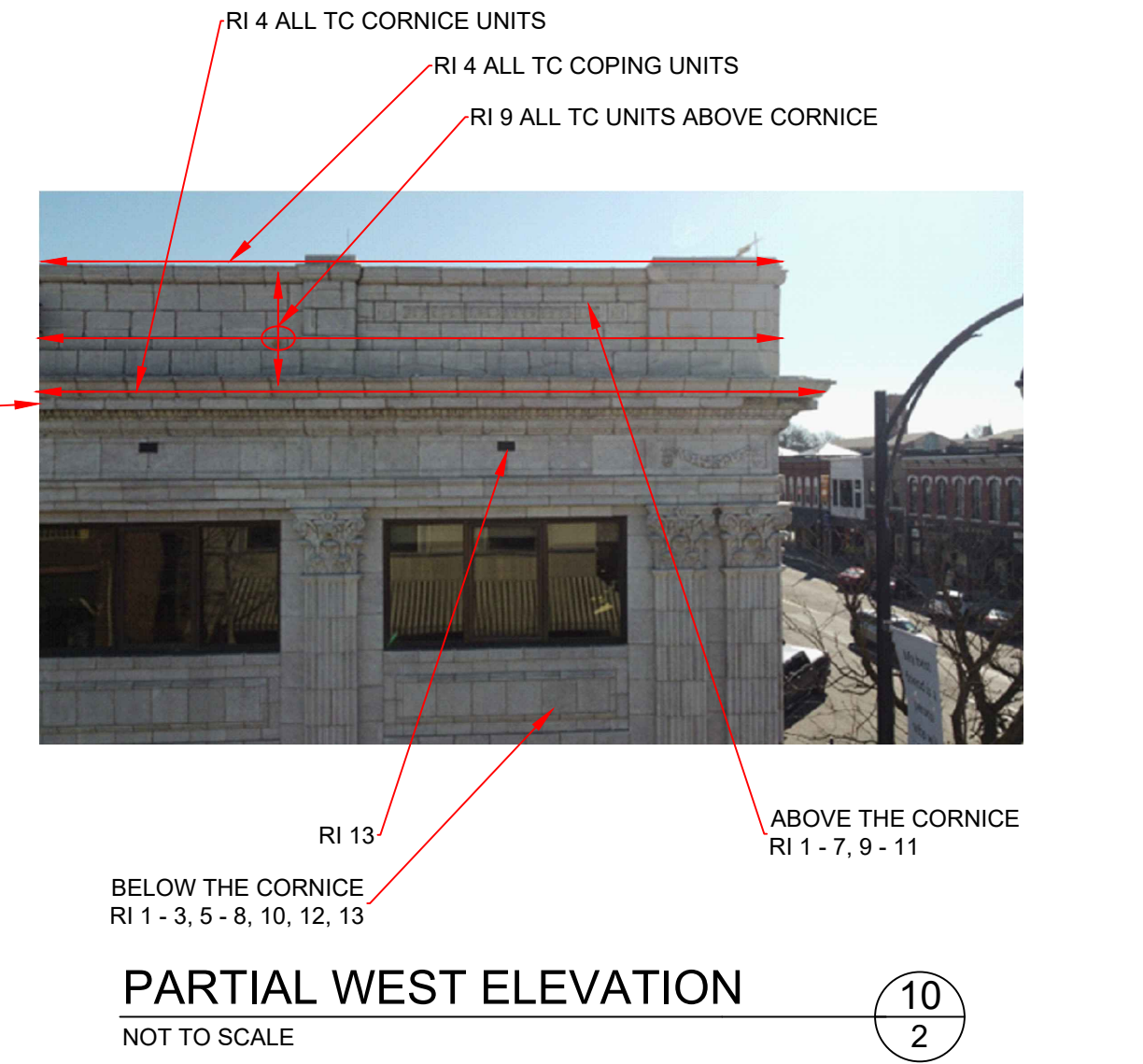
PARTIAL WEST ELEVATION (1)
NOT TO SCALE



PARTIAL WEST ELEVATION (4)
NOT TO SCALE



PARTIAL WEST ELEVATION (7)
NOT TO SCALE



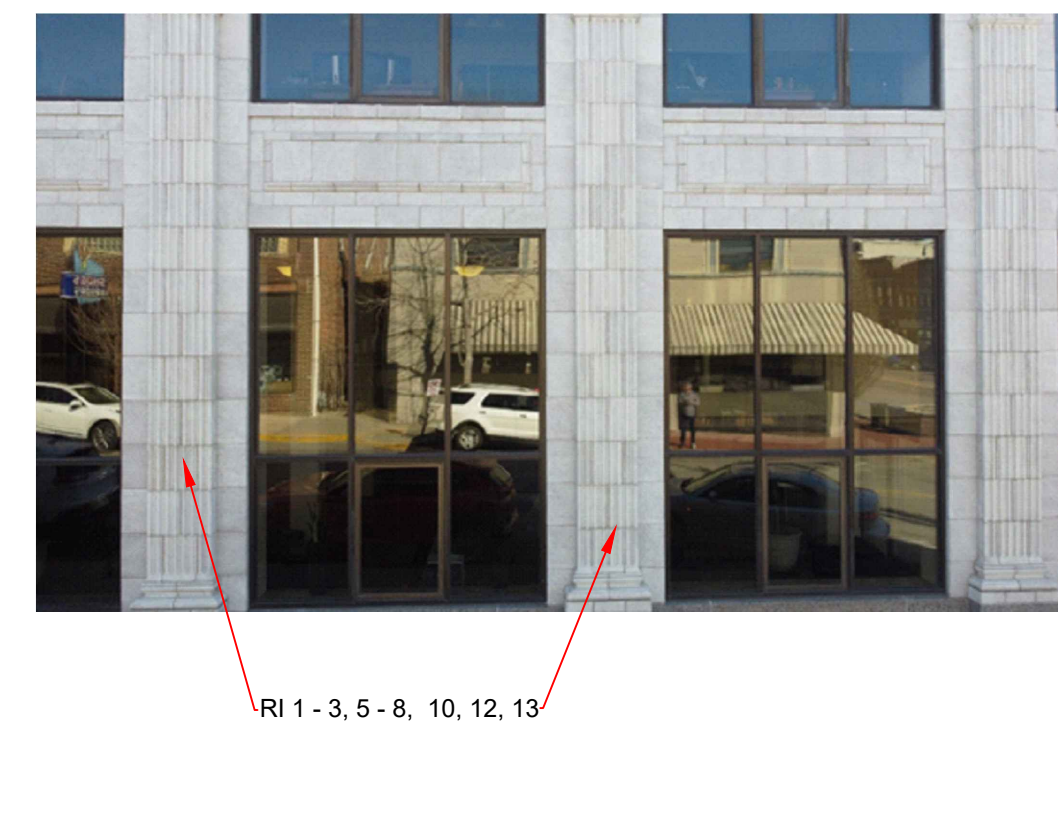
PARTIAL WEST ELEVATION (10)
NOT TO SCALE



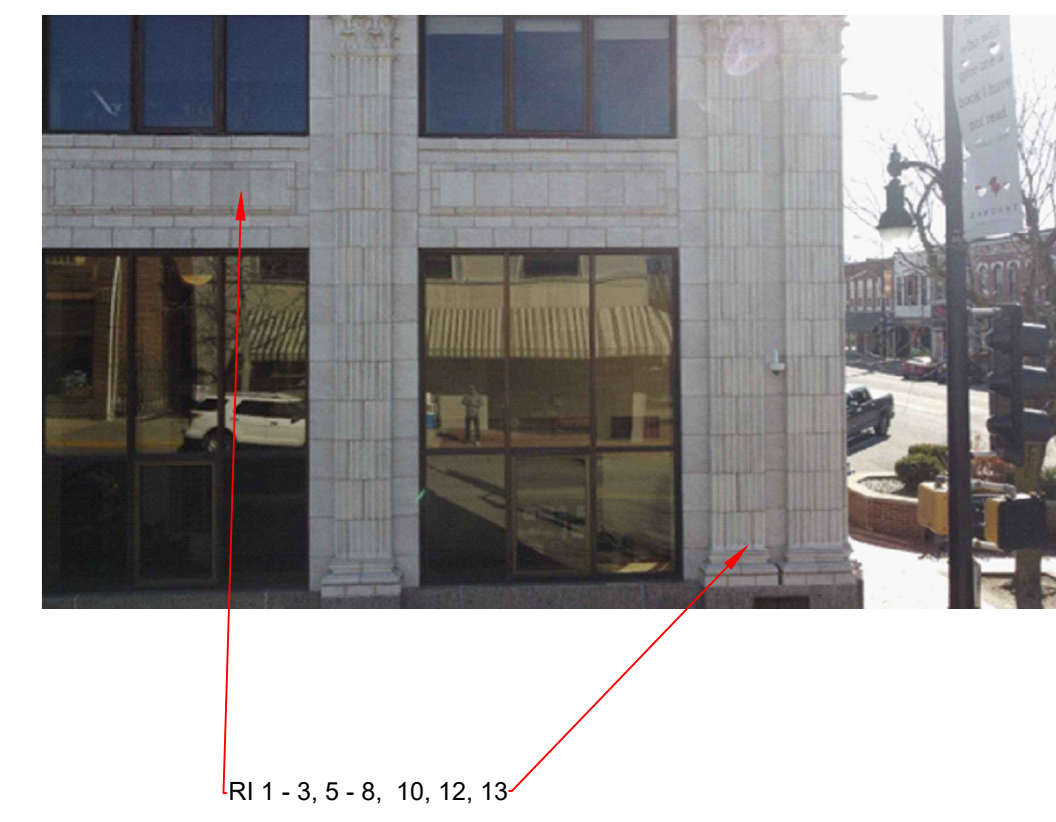
PARTIAL WEST ELEVATION (2)
NOT TO SCALE



PARTIAL WEST ELEVATION (5)
NOT TO SCALE



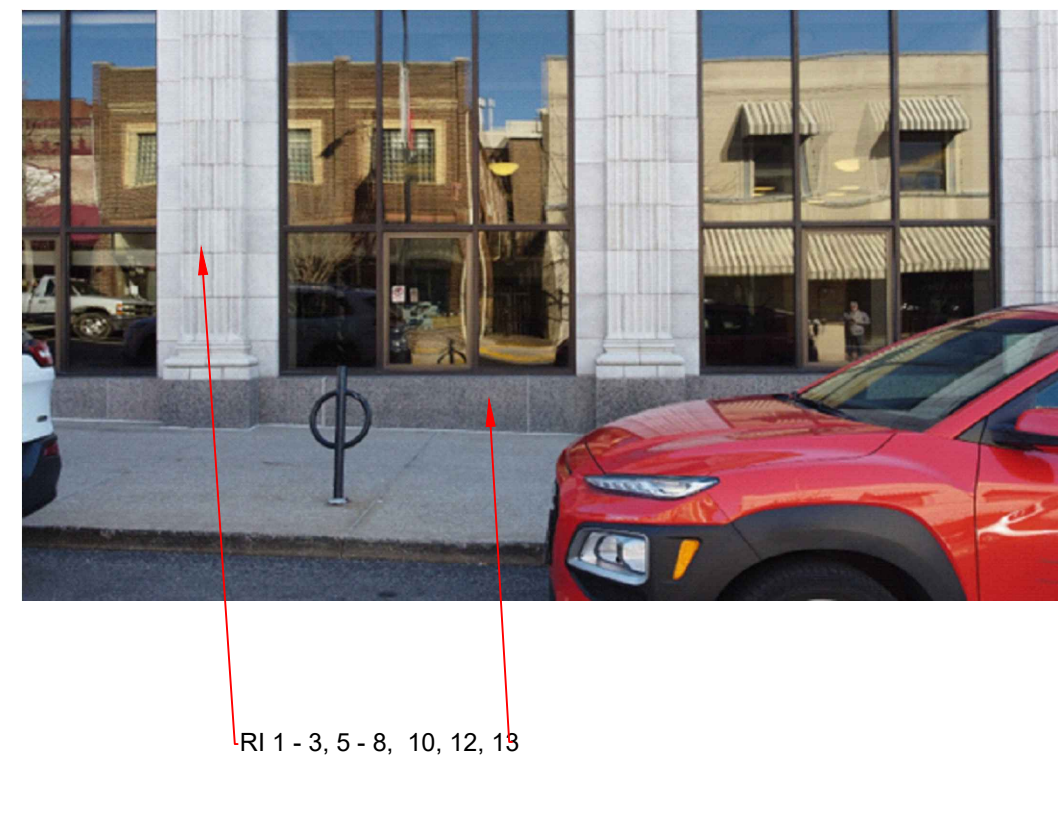
PARTIAL WEST ELEVATION (8)
NOT TO SCALE



PARTIAL WEST ELEVATION (11)
NOT TO SCALE



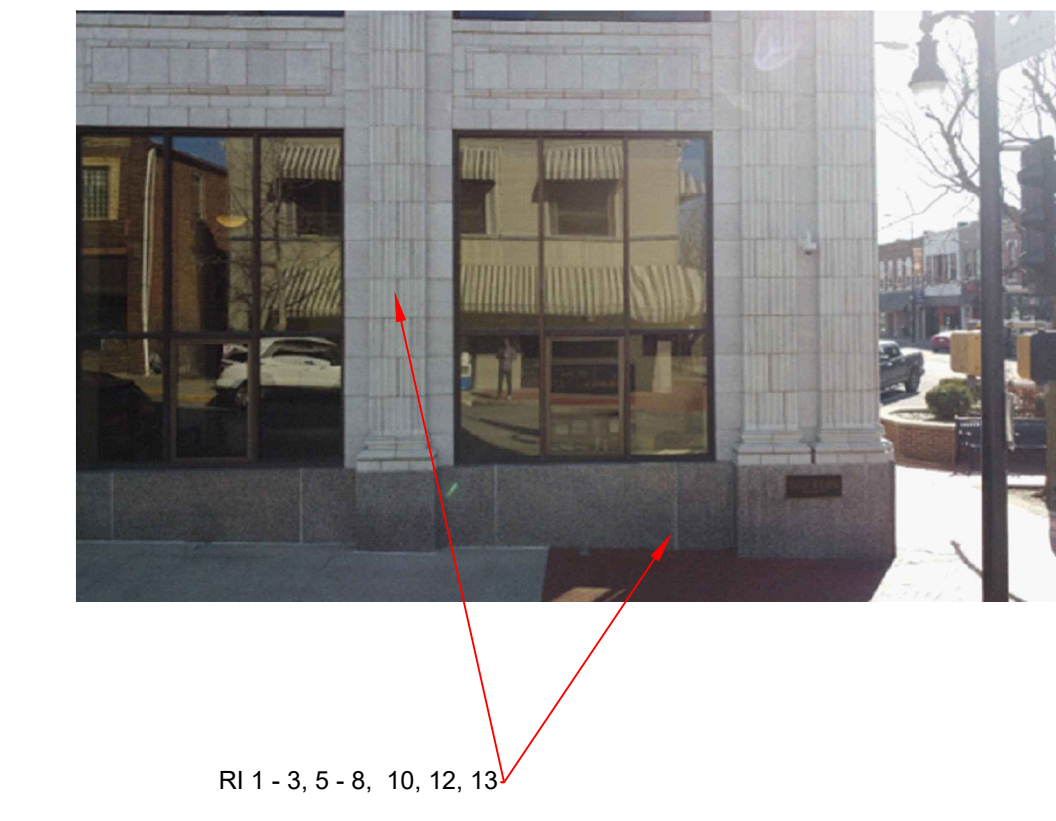
PARTIAL WEST ELEVATION (3)
NOT TO SCALE



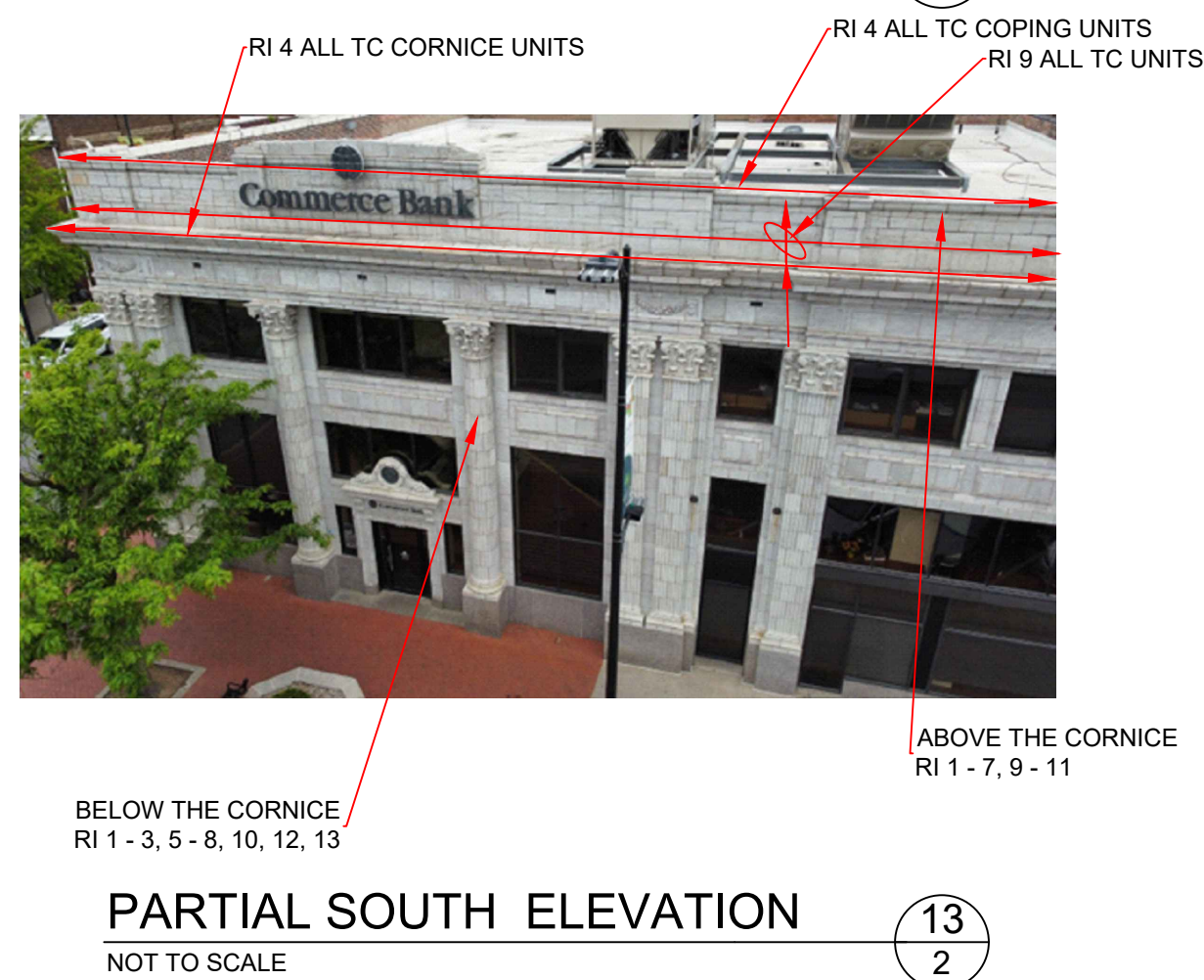
PARTIAL WEST ELEVATION (6)
NOT TO SCALE



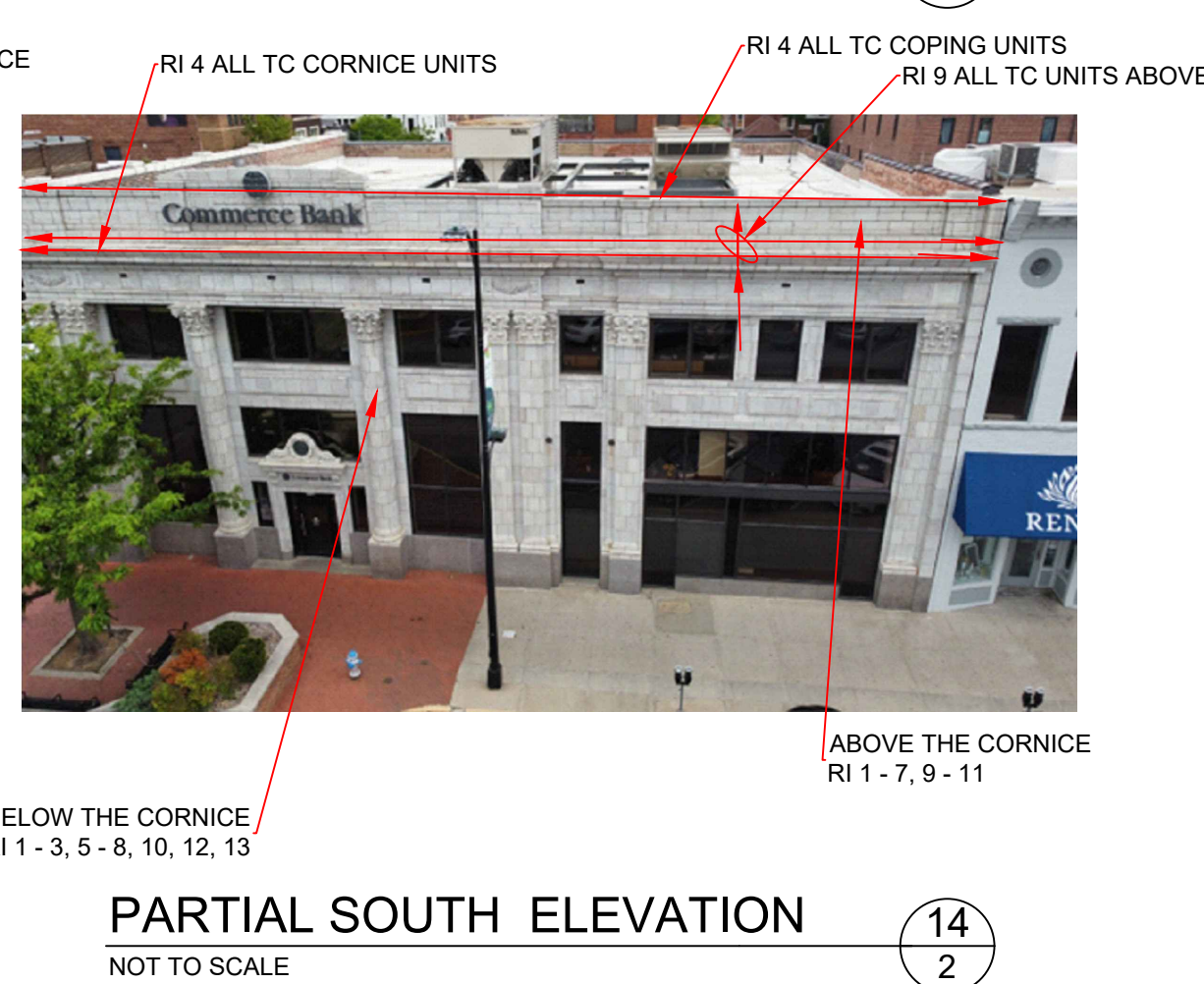
PARTIAL WEST ELEVATION (9)
NOT TO SCALE



PARTIAL WEST ELEVATION (12)
NOT TO SCALE



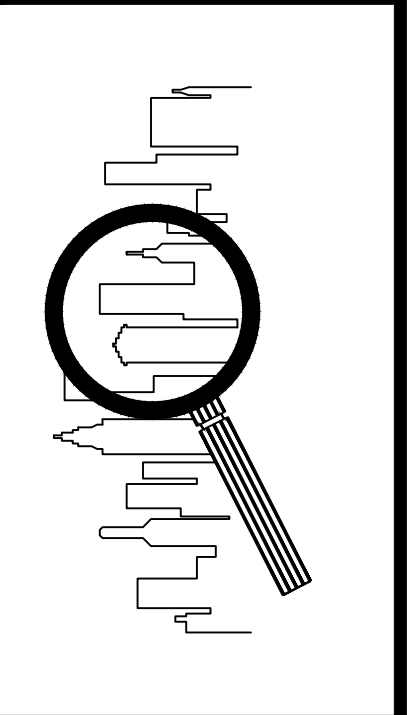
PARTIAL SOUTH ELEVATION (13)
NOT TO SCALE



PARTIAL SOUTH ELEVATION (14)
NOT TO SCALE

ALL PHOTOGRAPHS REPRESENT TYPICAL CONDITIONS, NOT ALL CONDITIONS. ASSUME THAT THE REPAIR INDICATED WILL BE PERFORMED AT THE SAME AND SIMILAR CONDITIONS THAT CAN BE INFERRED FROM THE PHOTOGRAPHS.

- REPAIR ITEM DESCRIPTIONS.
1. REPLACE FAILED TERRA COTTA COLOR COATINGS AND GLAZE.
 2. PATCH REPAIR TC UNIT.
 3. REPLACE EXISTING SEALANT AND PROVIDE NEW SEALANT AT ISOLATED COVE AND BUTT JOINTS.
 4. REPLACE TC UNIT JOINT MORTAR/SEALANT AT 100-PERCENT OF THE TC UNIT SKYVIEW SURFACES AS INDICATED ON THE DRAWINGS.
 5. REPLACE ALL EXISTING TC CRACK SEALANT AND PROVIDE SEALANT AT UNSEALED TO UNIT CRACKS.
 6. CRACKED TC UNIT EXTERNAL REINFORCEMENT.
 7. REPAIR SOUTHWEST CORNER PARAPET AND CORNICE TO UNITS.
 - 8.1 REPOINT TC ISOLATED MORTAR JOINTS AT MASONRY BELOW THE CORNICE AND THE BACKSIDE OF THE PARAPET WALLS AND PARTY WALL.
 - 8.2 REPLACE ISOLATED CLAY BRICK UNITS.
 9. REPOINT 100-PERCENT OF THE TC UNITS ABOVE THE CORNICE AS INDICATED ON THE DRAWINGS.
 10. CLEAN SOUTH AND WEST BUILDING ELEVATION.
 11. PARAPET WALL BACKSIDE AND PARTY WALL MASONRY WATER REPELLENT APPLICATION.
 12. WET-SEAL NORTH ELEVATION WINDOW SYSTEM.
 13. SEAL ATTIC VENT COVERS.
- ALTERNATE 1
14. REMOVE EXISTING TC COATING.
 15. VERTICAL SURFACE TC CRACK REPAIR.
 16. RENEW TC COLOR COAT AND GLAZE.



DRAWN BY: DATE: 9-5-23
CHECKED BY: DATE:
FILENAME:

REVISIONS:



RI 1. REPLACE FAILED TERRA COTTA COLOR COATINGS AND GLAZE.

PHOTOGRAPH 1
NTS 3



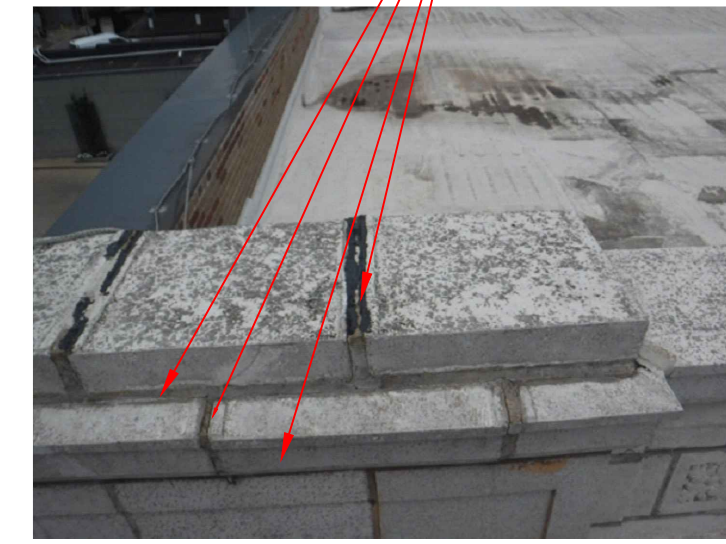
RI 1. REPLACE FAILED TERRA COTTA COLOR COATINGS AND GLAZE.

PHOTOGRAPH 2
NTS 3



RI 1. REPLACE FAILED TERRA COTTA COLOR COATINGS AND GLAZE.

PHOTOGRAPH 3
NTS 3



RI 4. REPLACE TC UNIT JOINT MORTAR/SEALANT AT 100-PERCENT OF THE TC UNIT SKYVIEW SURFACES AS INDICATED ON THE DRAWINGS.

PHOTOGRAPH 4
NTS 3



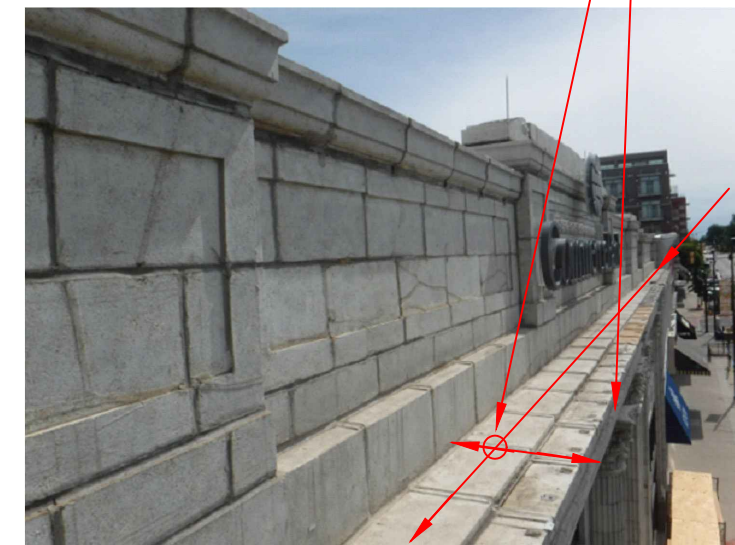
RI 4. REPLACE TC UNIT JOINT MORTAR/SEALANT AT 100-PERCENT OF THE TC UNIT SKYVIEW SURFACES AS INDICATED ON THE DRAWINGS.

PHOTOGRAPH 5
NTS 3



RI 4. REPLACE TC UNIT JOINT MORTAR/SEALANT AT 100-PERCENT OF THE TC UNIT SKYVIEW SURFACES AS INDICATED ON THE DRAWINGS.

PHOTOGRAPH 6
NTS 3



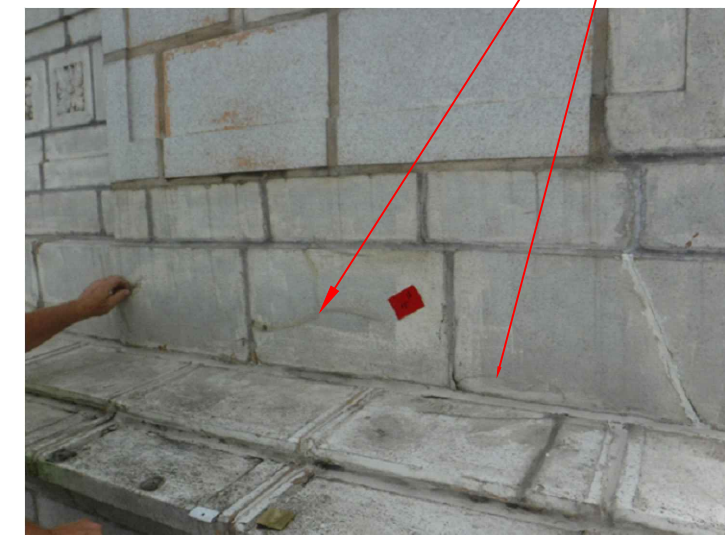
RI 4. REPLACE TC UNIT JOINT MORTAR/SEALANT AT 100-PERCENT OF THE TC UNIT SKYVIEW SURFACES AS INDICATED ON THE DRAWINGS.

PHOTOGRAPH 7
NTS 3



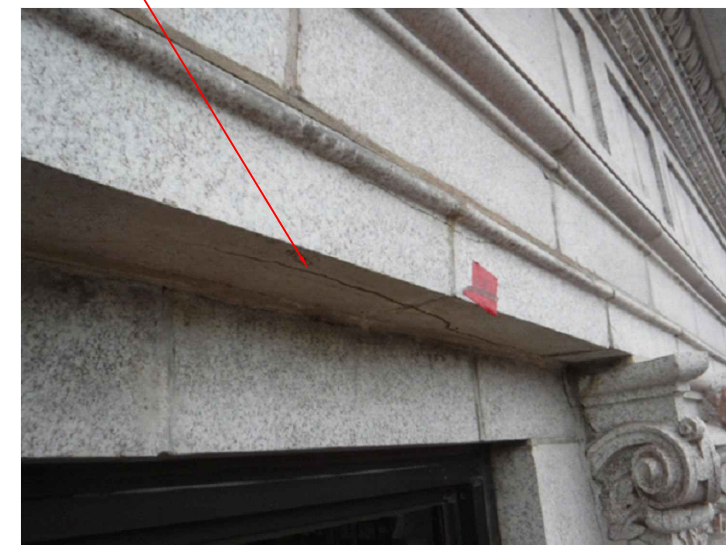
RI 4. REPLACE TC UNIT JOINT MORTAR/SEALANT AT 100-PERCENT OF THE TC UNIT SKYVIEW SURFACES AS INDICATED ON THE DRAWINGS.

PHOTOGRAPH 8
NTS 3



RI 5. REPLACE EXISTING TC CRACK SEALANT AND PROVIDE SEALANT AT UNSEALED TC UNIT CRACKS.

PHOTOGRAPH 9
NTS 3



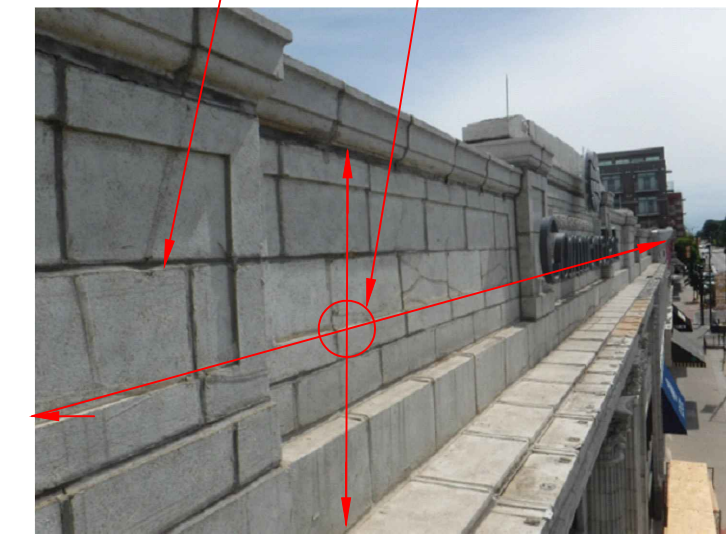
RI 5. REPLACE EXISTING TC CRACK SEALANT AND PROVIDE SEALANT AT UNSEALED TC UNIT CRACKS.

PHOTOGRAPH 10
NTS 3



RI 5. REPLACE EXISTING TC CRACK SEALANT AND PROVIDE SEALANT AT UNSEALED TC UNIT CRACKS.

PHOTOGRAPH 11
NTS 3



RI 9. REPOINT 100-PERCENT OF THE TC UNITS ABOVE THE CORNICE AS INDICATED ON THE DRAWINGS.

PHOTOGRAPH 12
NTS 3



RI 8. REPOINT TC ISOLATED MORTAR JOINTS AT MASONRY BELOW THE CORNICE AND THE BACKSIDE OF THE PARAPET WALLS AND PARTY WALL.
RI 11. PARAPET WALL BACKSIDE AND PARTY WALL MASONRY WATER REPELLENT APPLICATION.

PHOTOGRAPH 13
NTS 3



RI 8. REPOINT TC ISOLATED MORTAR JOINTS AT MASONRY BELOW THE CORNICE AND THE BACKSIDE OF THE PARAPET WALLS AND PARTY WALL.
RI 11. PARAPET WALL BACKSIDE AND PARTY WALL MASONRY WATER REPELLENT APPLICATION.

PHOTOGRAPH 14
NTS 3



RI 8. REPOINT TC ISOLATED MORTAR JOINTS AT MASONRY BELOW THE CORNICE AND THE BACKSIDE OF THE PARAPET WALLS AND PARTY WALL.
RI 11. PARAPET WALL BACKSIDE AND PARTY WALL MASONRY WATER REPELLENT APPLICATION.

PHOTOGRAPH 15
NTS 3



RI 8. REPOINT TC ISOLATED MORTAR JOINTS AT MASONRY BELOW THE CORNICE AND THE BACKSIDE OF THE PARAPET WALLS AND PARTY WALL.
RI 11. PARAPET WALL BACKSIDE AND PARTY WALL MASONRY WATER REPELLENT APPLICATION.

PHOTOGRAPH 16
NTS 3



RI 12. WET-SEAL NORTH ELEVATION WINDOW SYSTEM.

PHOTOGRAPH 17
NTS 3



RI 13. SEAL ATTIC VENT COVERS.

PHOTOGRAPH 18
NTS 3

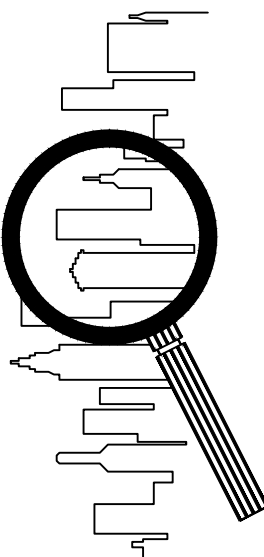
REPAIR ITEM DESCRIPTIONS.

1. REPLACE FAILED TERRA COTTA COLOR COATINGS AND GLAZE.
2. PATCH REPAIR TC UNIT.
3. REPLACE EXISTING SEALANT AND PROVIDE NEW SEALANT AT ISOLATED COVE AND BUTT JOINTS.
4. REPLACE TC UNIT JOINT MORTAR/SEALANT AT 100-PERCENT OF THE TC UNIT SKYVIEW SURFACES AS INDICATED ON THE DRAWINGS.
5. REPLACE ALL EXISTING TC CRACK SEALANT AND PROVIDE SEALANT AT UNSEALED TC UNIT CRACKS.
6. CRACKED TC UNIT EXTERNAL REINFORCEMENT.
7. REPAIR SOUTHWEST CORNER PARAPET AND CORNICE TC UNITS.
- 8.1 REPOINT TC ISOLATED MORTAR JOINTS AT MASONRY BELOW THE CORNICE AND THE BACKSIDE OF THE PARAPET WALLS AND PARTY WALL.
- 8.2 REPLACE ISOLATED CLAY BRICK UNITS.
9. REPOINT 100-PERCENT OF THE TC UNITS ABOVE THE CORNICE AS INDICATED ON THE DRAWINGS.

REPAIR ITEM DESCRIPTIONS.

10. CLEAN SOUTH AND WEST BUILDING ELEVATION.
11. PARAPET WALL BACKSIDE AND PARTY WALL MASONRY WATER REPELLENT APPLICATION.
12. WET-SEAL NORTH ELEVATION WINDOW SYSTEM.
13. SEAL ATTIC VENT COVERS.
- ALTERNATE 1
14. REMOVE EXISTING TC COATING.
15. VERTICAL SURFACE TC CRACK REPAIR.
16. RENEW TC COLOR COAT AND GLAZE.

ALL PHOTOGRAPHS REPRESENT TYPICAL CONDITIONS. NOT ALL CONDITIONS. ASSUME THAT THE REPAIR INDICATED WILL BE PERFORMED AT THE SAME AND SIMILAR CONDITIONS THAT CAN BE INFERRED FROM THE PHOTOGRAPHS.



DRAWN BY: DATE: 9-5-23
CHECKED BY: DATE:
FILENAME:

REVISIONS:
△
△
△
△
△

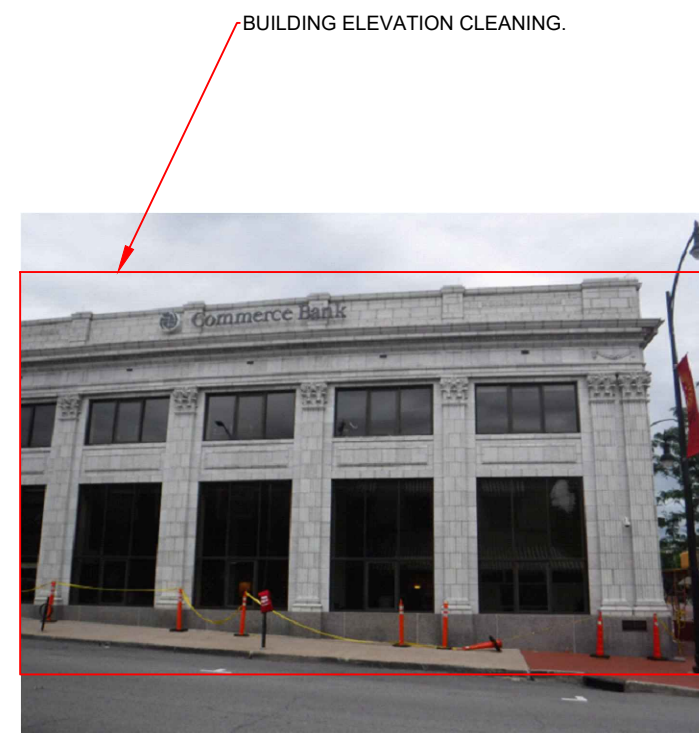
SHEET NO.:



RI 10. CLEAN SOUTH AND WEST BUILDING ELEVATION. PARTIAL WEST ELEVATION

PHOTOGRAPH
NTS

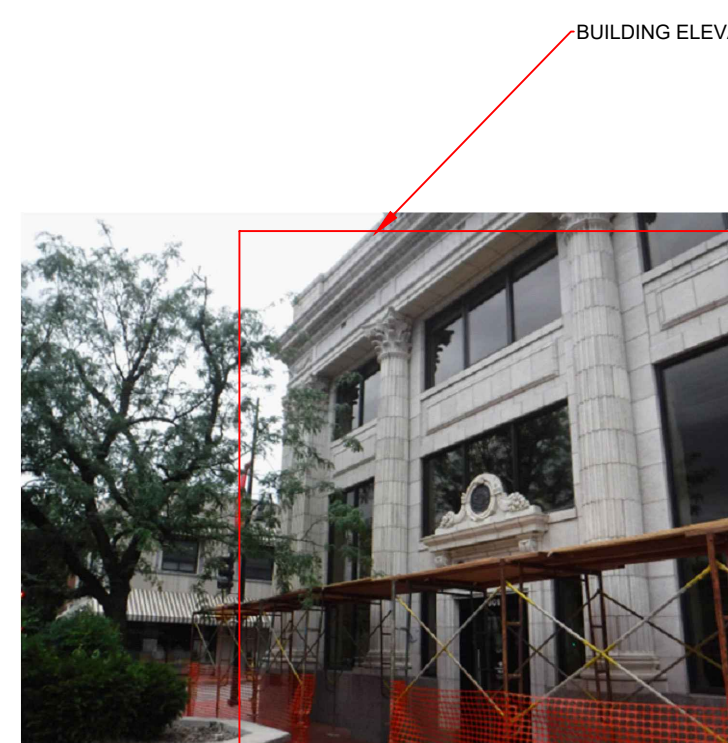
1
4



RI 10. CLEAN SOUTH AND WEST BUILDING ELEVATION. PARTIAL WEST ELEVATION

PHOTOGRAPH
NTS

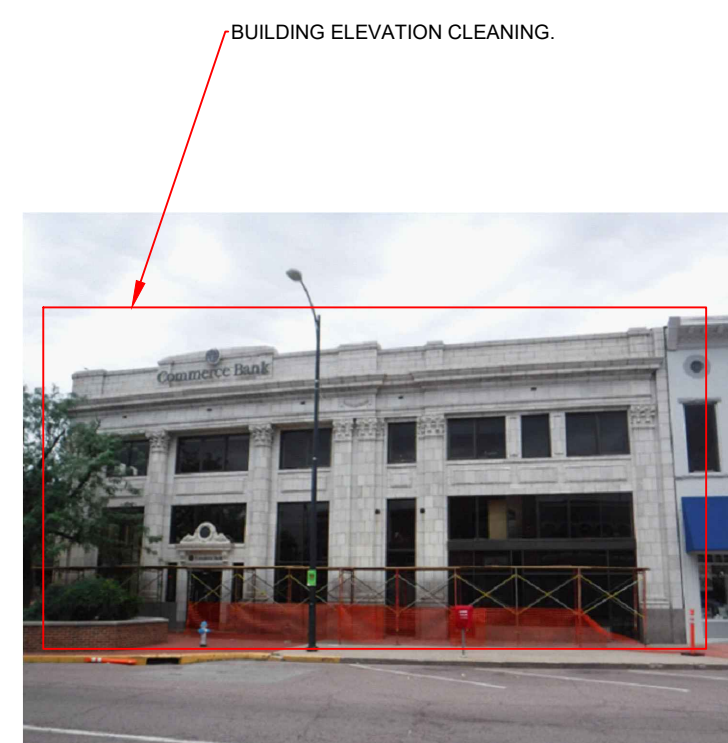
2
4



RI 10. SOUTH AND WEST BUILDING ELEVATION CLEANING. PARTIAL SOUTH ELEVATION

PHOTOGRAPH
NTS

3
4



RI 10. SOUTH AND WEST BUILDING ELEVATION CLEANING. PARTIAL SOUTH ELEVATION

PHOTOGRAPH
NTS

4
4

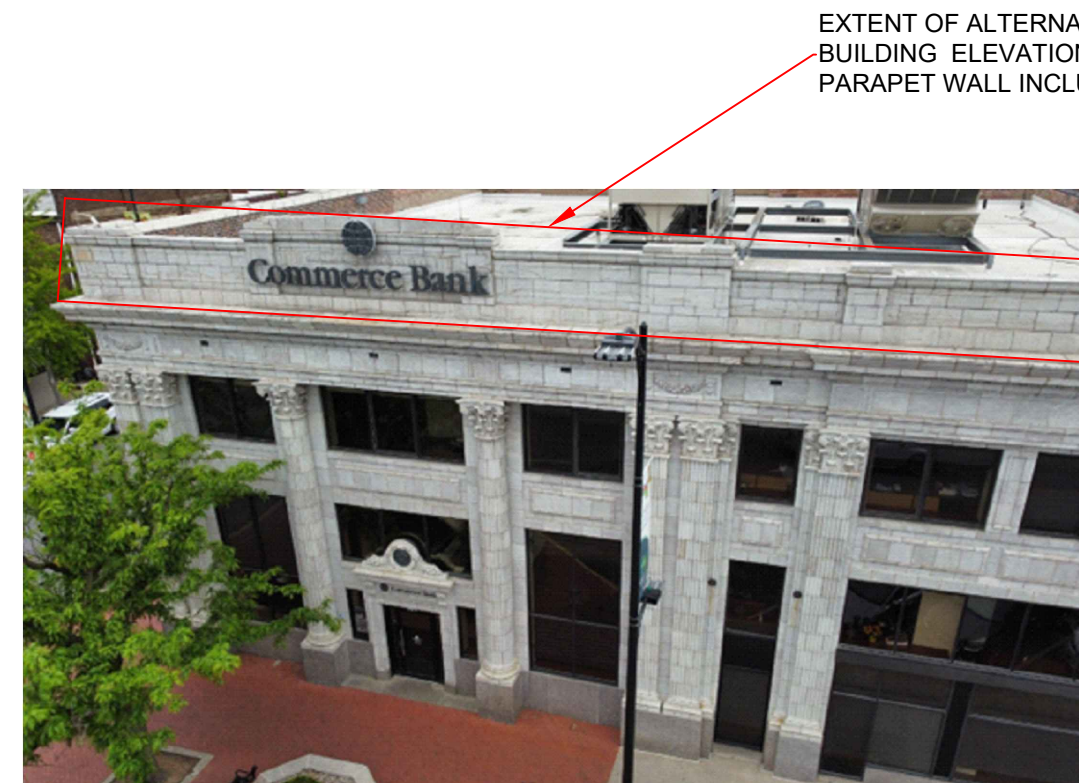


EXTENT OF ALTERNATE 1 REPAIR ITEMS. INCLUDES ALL VERTICAL FACES OF THE NORTH BUILDING ELEVATION FROM THE BOTTOM OF THE CORNICE TO THE TOP OF THE PARAPET WALL INCLUDING BEHIND BUILDING SIGNAGE, SEE 9/4, 10/4, & 11/4

PHOTOGRAPH
NTS

5
4

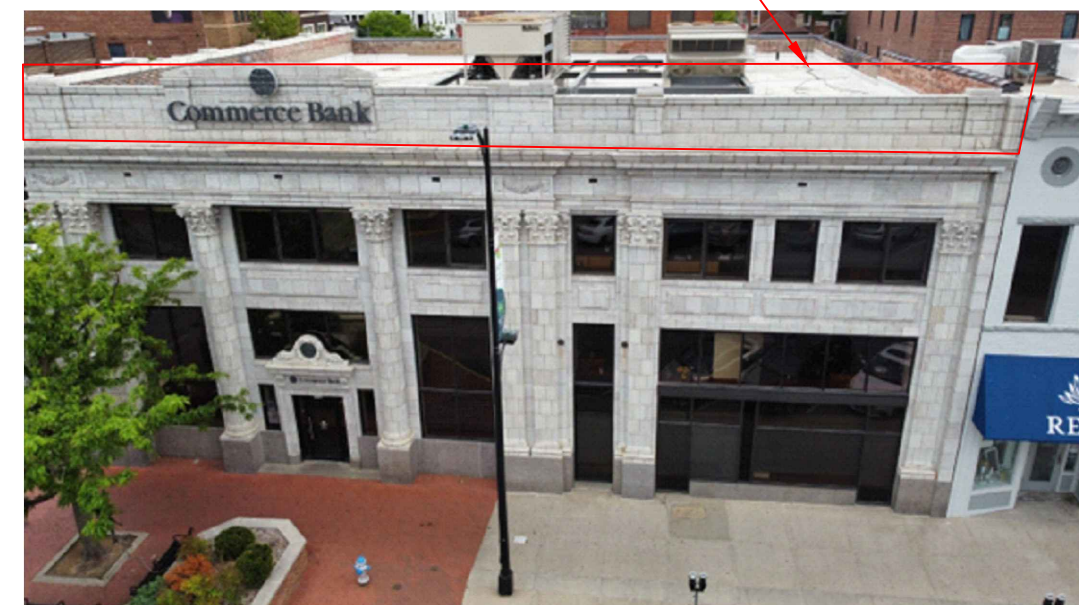
NOT USED



PHOTOGRAPH
NTS

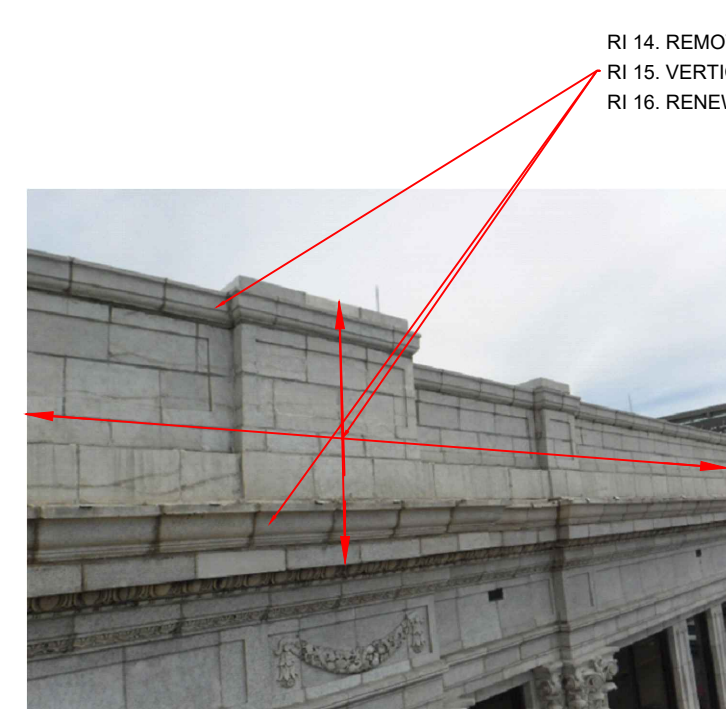
6
4

EXTENT OF ALTERNATE 1 REPAIR ITEMS. INCLUDES ALL VERTICAL FACES OF THE SOUTH BUILDING ELEVATION FROM THE BOTTOM OF THE CORNICE TO THE TOP OF THE PARAPET WALL INCLUDING BEHIND BUILDING SIGNAGE, SEE 9/4, 10/4, & 11/4



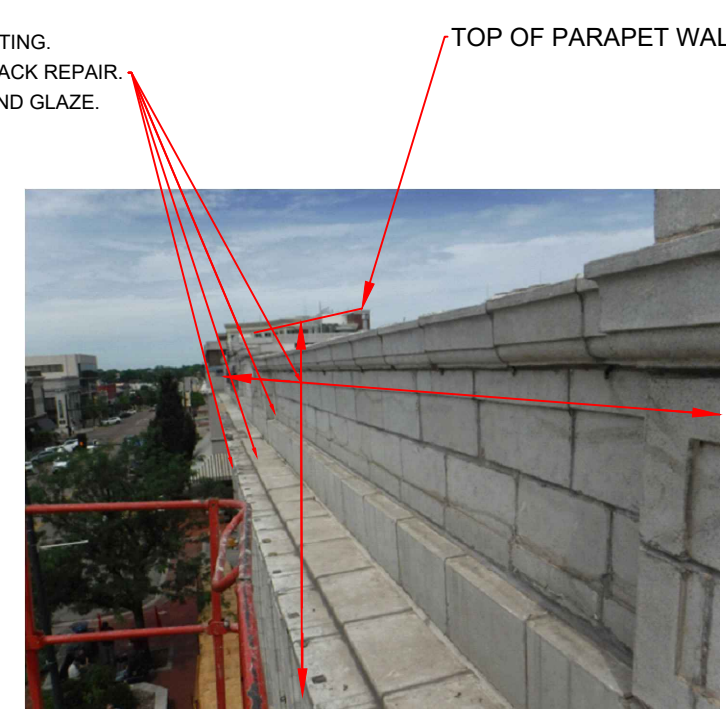
ALTERNATE 1
PHOTOGRAPH
NTS

7
4



ALTERNATE 1
PHOTOGRAPH
NTS

9
4



ALTERNATE 1
PHOTOGRAPH
NTS

10
4

RI 14. REMOVE EXISTING TC COATING.
RI 15. VERTICAL SURFACE TC CRACK REPAIR.
RI 16. RENEW TC COLOR COAT AND GLAZE.



ALTERNATE 1
PHOTOGRAPH
NTS

11
4

ALL PHOTOGRAPHS REPRESENT TYPICAL CONDITIONS. NOT ALL CONDITIONS. ASSUME THAT THE REPAIR INDICATED WILL BE PERFORMED AT THE SAME AND SIMILAR CONDITIONS THAT CAN BE INFERRED FROM THE PHOTOGRAPHS.

REPAIR ITEM DESCRIPTIONS.

1. REPLACE FAILED TERRA COTTA COLOR COATINGS AND GLAZE.
 2. PATCH REPAIR TC UNIT.
 3. REPLACE EXISTING SEALANT AND PROVIDE NEW SEALANT AT ISOLATED COVE AND BUTT JOINTS.
 4. REPLACE TC UNIT JOINT MORTAR/SEALANT AT 100-PERCENT OF THE TC UNIT SKYVIEW SURFACES AS INDICATED ON THE DRAWINGS.
 5. REPLACE ALL EXISTING TC CRACK SEALANT AND PROVIDE SEALANT AT UNSEALED TC UNIT CRACKS.
 6. CRACKED TC UNIT EXTERNAL REINFORCEMENT.
 7. REPAIR SOUTHWEST CORNER PARAPET AND CORNICE TC UNITS.
 - 8.1 REPOINT TC ISOLATED MORTAR JOINTS AT MASONRY BELOW THE CORNICE AND THE BACKSIDE OF THE PARAPET WALLS AND PARTY WALL.
 - 8.2 REPLACE ISOLATED CLAY BRICK UNITS.
 9. REPOINT 100-PERCENT OF THE TC UNITS ABOVE THE CORNICE AS INDICATED ON THE DRAWINGS.
 10. CLEAN SOUTH AND WEST BUILDING ELEVATION.
 11. PARAPET WALL BACKSIDE AND PARTY WALL MASONRY WATER REPELLENT APPLICATION.
 12. WET-SEAL NORTH ELEVATION WINDOW SYSTEM.
 13. SEAL ATTIC VENT COVERS.
- ALTERNATE 1
14. REMOVE EXISTING TC COATING.
 15. VERTICAL SURFACE TC CRACK REPAIR.
 16. RENEW TC COLOR COAT AND GLAZE.

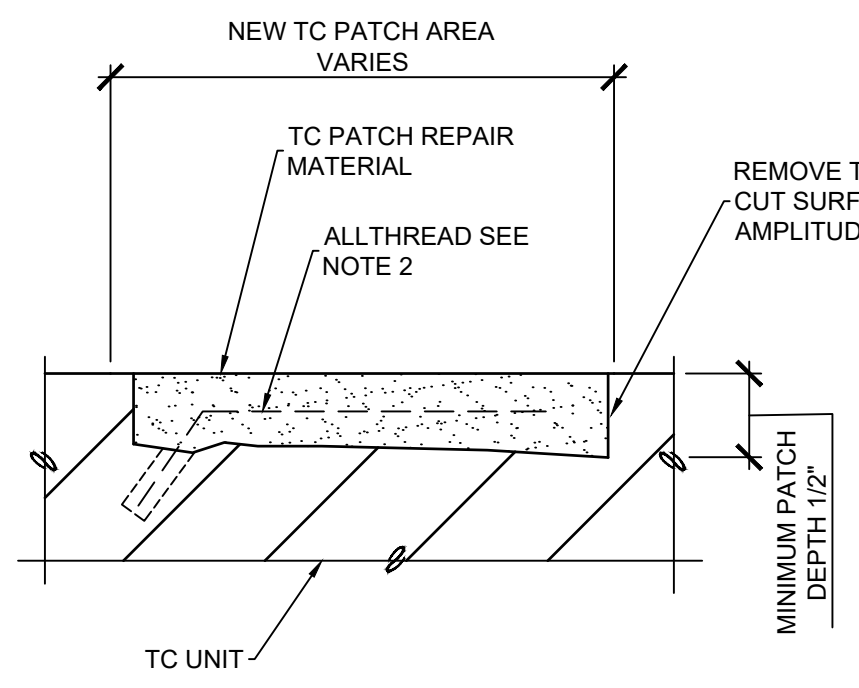


DRAWN BY: DATE: 9-5-23
CHECKED BY: DATE:
FILENAME:

REVISIONS:

Δ	
Δ	
Δ	
Δ	

SHEET NO.:



1/5 NOTES

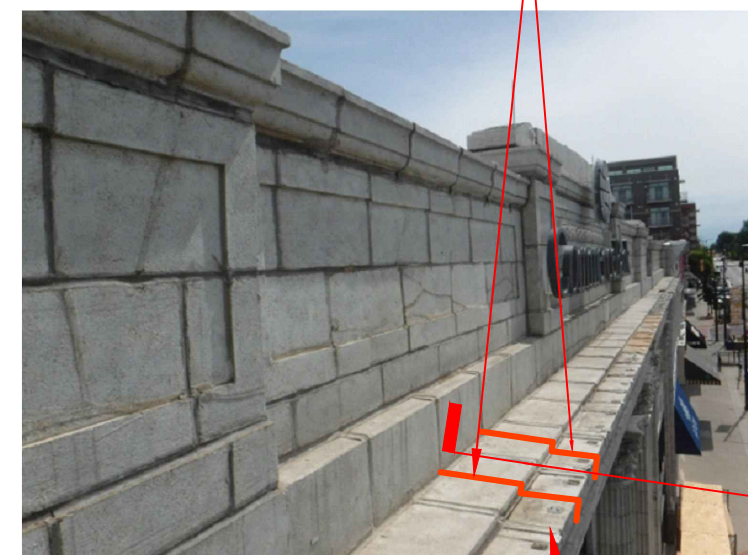
- FOR BIDDING PURPOSES, ASSUME THE REPAIR PATCH DEPTH VARIES 1/2" TO 1". THE UNIT COST OF THE REPAIRS THAT EXCEEDS THIS RANGE WILL BE EQUITABLY ADJUSTED BASED ON ACTUAL REPAIR PATCH DEPTHS.
- FOR OVERHEAD AND OTHER REPAIRS THAT EXCEEDS 1.5" IN DEPTH PROVIDE STAINLESS STEEL 1/4" DIAMETER ALLTHREADS, EMBED ALLTHREAD INTO TC MINIMUM 2" WITH HILTI HY 200 ADHESIVE, FIELD FABRICATE AND PLACE ALLTHREAD TO PROVIDE MINIMUM 3/4" PATCH MATERIAL COVER. LOCATE ALLTHREADS AS DIRECTED BY ENGINEER.
- ASSUME (2) ALLTHREAD RODS PER PATCH AREA.

**REPAIR ITEM 2
PATCH REPAIR TC UNIT.**

NOT TO SCALE

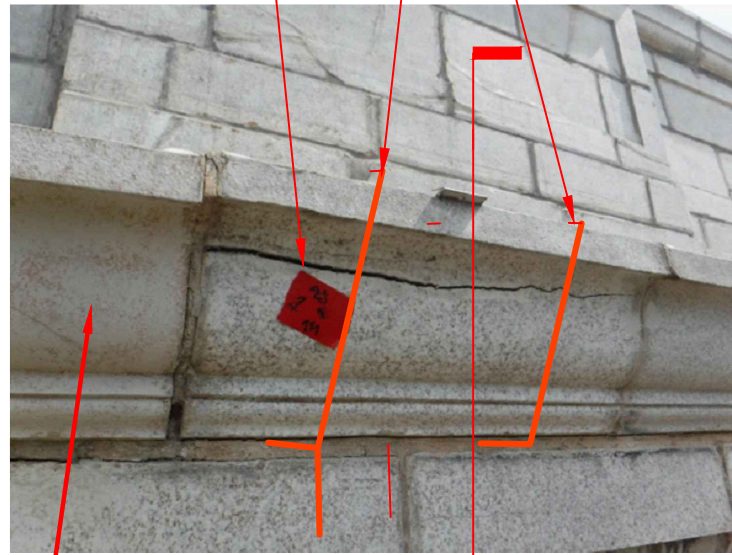
1/5

CRACKED TC UNIT EXTERNAL REINFORCEMENT, PROVIDE (2) FABRICATIONS PER CRACKED UNIT, SPACE FABRICATION AT 1/3 POINTS OF THE TC UNIT HORIZONTAL DIMENSION (WIDTH)



7/5

SEE 2/5 FOR BOTTOM VIEW



7/5

SEE 3/5 FOR TOP VIEW

PHOTOGRAPH

NTS

5/5

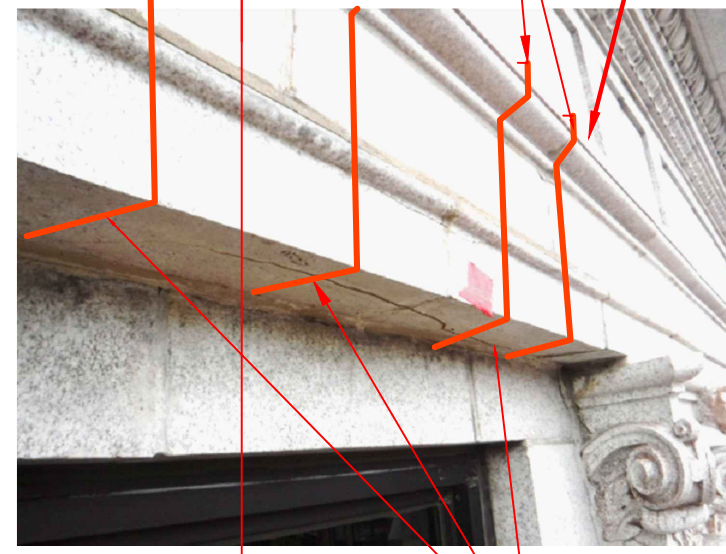
PHOTOGRAPH

NTS

6/5

ALL PHOTOGRAPHS REPRESENT TYPICAL CONDITIONS, NOT ALL CONDITIONS. ASSUME THAT THE REPAIR INDICATED WILL BE PERFORMED AT THE SAME AND SIMILAR CONDITIONS THAT CAN BE INFERRED FROM THE PHOTOGRAPHS.

CRACKED TC UNIT EXTERNAL REINFORCEMENT, PROVIDE (2) FABRICATIONS PER CRACKED UNIT, SPACE FABRICATION AT 1/3 POINTS OF THE TC UNIT HORIZONTAL DIMENSION (WIDTH)



4/5

RI 6. CRACKED TC UNIT EXTERNAL REINFORCEMENT.

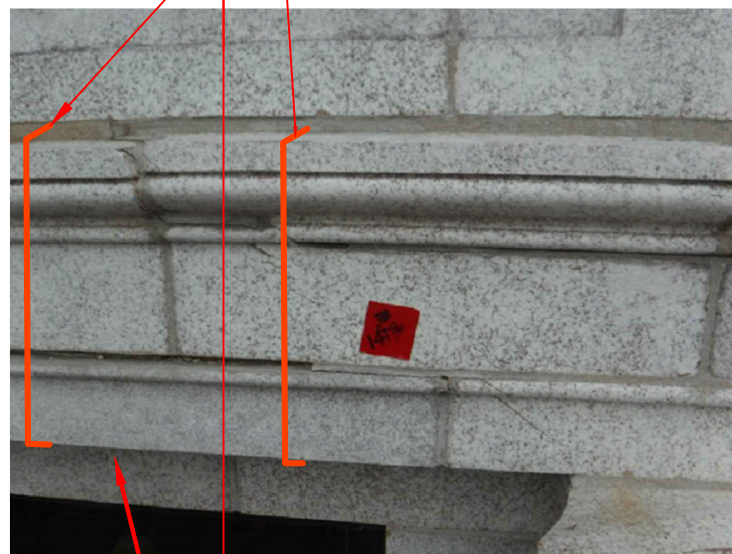
PHOTOGRAPH

NTS

2/5

SEE 3/5 FOR TOP VIEW

CRACKED TC UNIT EXTERNAL REINFORCEMENT, PROVIDE (2) FABRICATIONS PER CRACKED UNIT, SPACE FABRICATION AT 1/3 POINTS OF THE TC UNIT HORIZONTAL DIMENSION (WIDTH)



4/5

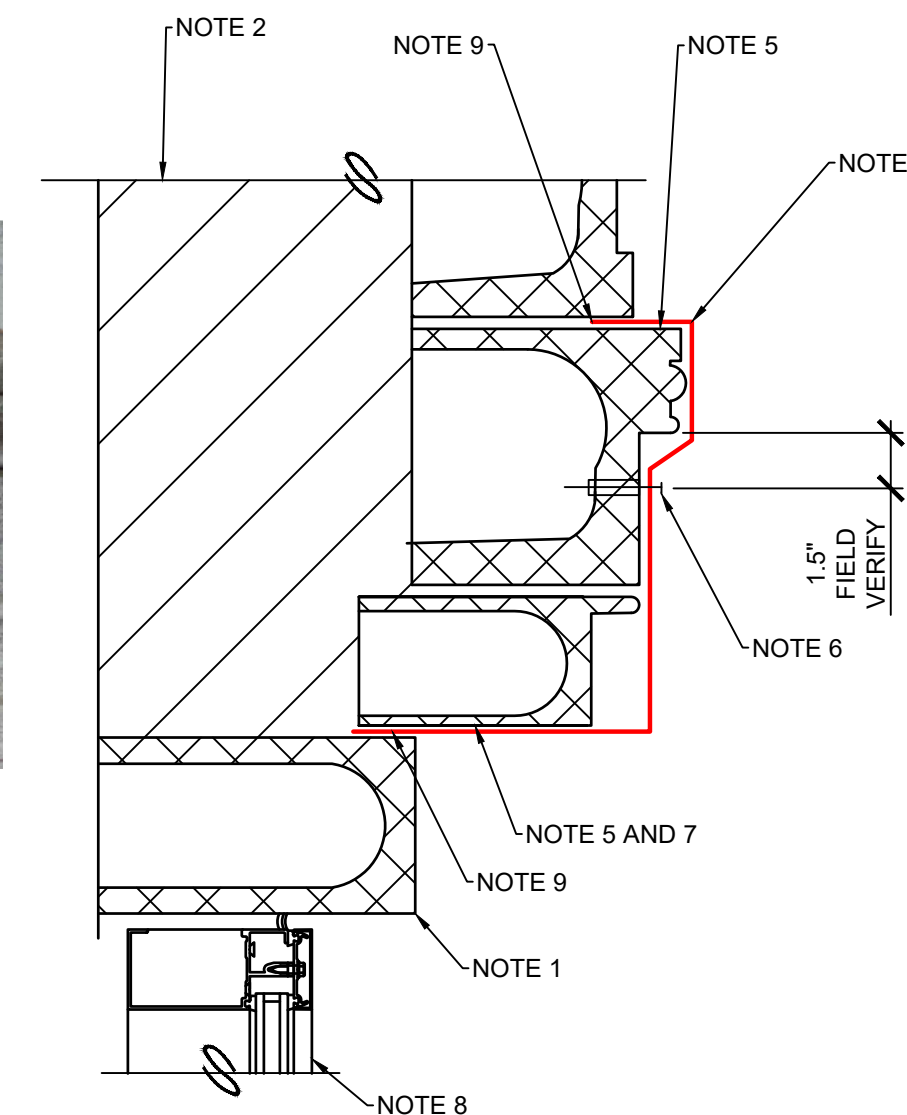
RI 6. CRACKED TC UNIT EXTERNAL REINFORCEMENT.

PHOTOGRAPH

NTS

3/5

SEE 2/5 FOR BOTTOM VIEW



4/5 NOTES

- TC UNIT TYPICAL.
- MASONRY BACKUP.
- TC EMBEDDED ANGLES, PLATES, BEAMS, AND TIES NOT SHOWN.
- STAINLESS STEEL 304 3/16" THICK X 2" WIDE FABRICATION, COAT FABRICATION, FIELD TOUCH UP COATING DAMAGE, PROVIDE A FULL SCALE MOCK UP FABRICATION FOR APPROVAL.
- EPOXY BOND THE FABRICATION TO THE TC WITH SIKADUR-31 HI-MOD GEL EPOXY, PROVIDE MINIMUM 1/16", MAXIMUM 1/8" EPOXY THICKNESS AT THE BOND SITE, PROVIDE MINIMUM 1.5" LONG X 2" WIDE BOND AREA BETWEEN THE BACKSIDE OF THE STAINLESS STEEL FABRICATION AND THE TC. REMOVE ANY COATING ON THE STEEL BOND AREA, SOLVENT WIPE THE METAL CLEAN, ROUGHEN THE STEEL SUBSTRATE TO A SURFACE MAGNITUDE ROUGHNESS SIMILAR TO 80 GRIT SANDPAPER. CLEAN THE TC WITH WATER AND DETERGENT TO REMOVE SURFACE SOILING, SOLVENT WIPE SURFACE AND ROUGHEN TC SURFACE TO A SURFACE MAGNITUDE ROUGHNESS SIMILAR TO 80 GRIT SANDPAPER. HORIZONTAL TAILS MAY BE FIELD ADJUSTED (BENT) TO FIT THE TC CONDITIONS PRESENT. PROVIDE A MOCK-UP OF THE STAINLESS STEEL-TO-TC BOND FOR ENGINEER'S LOAD TESTING IN AN INCONSPICUOUS LOCATION ON THE BUILDING.
- (1) 1/4" DIAMETER A304 STAINLESS STEEL BOLT AND SIMPSON STRONG-TIE "DIAB" DROP-IN 1/4" DIAMETER ANCHOR STAINLESS STEEL DROP IN ANCHOR, CORE DRILL ANCHOR HOLE IN TC, CENTER ANCHOR ON FABRICATION 2" WIDTH, SEAL AROUND BOLT HEAD WITH SEALANT AND FULLY BED FABRICATION EACH SIDE OF BOLT MINIMUM 3" WITH SEALANT.
- MINIMUM 1.5" LONG AND 2" WIDE EPOXY BOND AREA.
- WINDOW SYSTEM.
- EXTEND TAIL OF FABRICATION MINIMUM 3" BEYOND THE TC FACE, GRIND/REMOVE MORTAR TO INSERT TAIL IN BED JOINT, EXTEND MORTAR REMOVAL MINIMUM 3" EACH SIDE OF FABRICATION, SEAL AROUND FABRICATION TAIL AND BED JOINT WITH SEALANT.

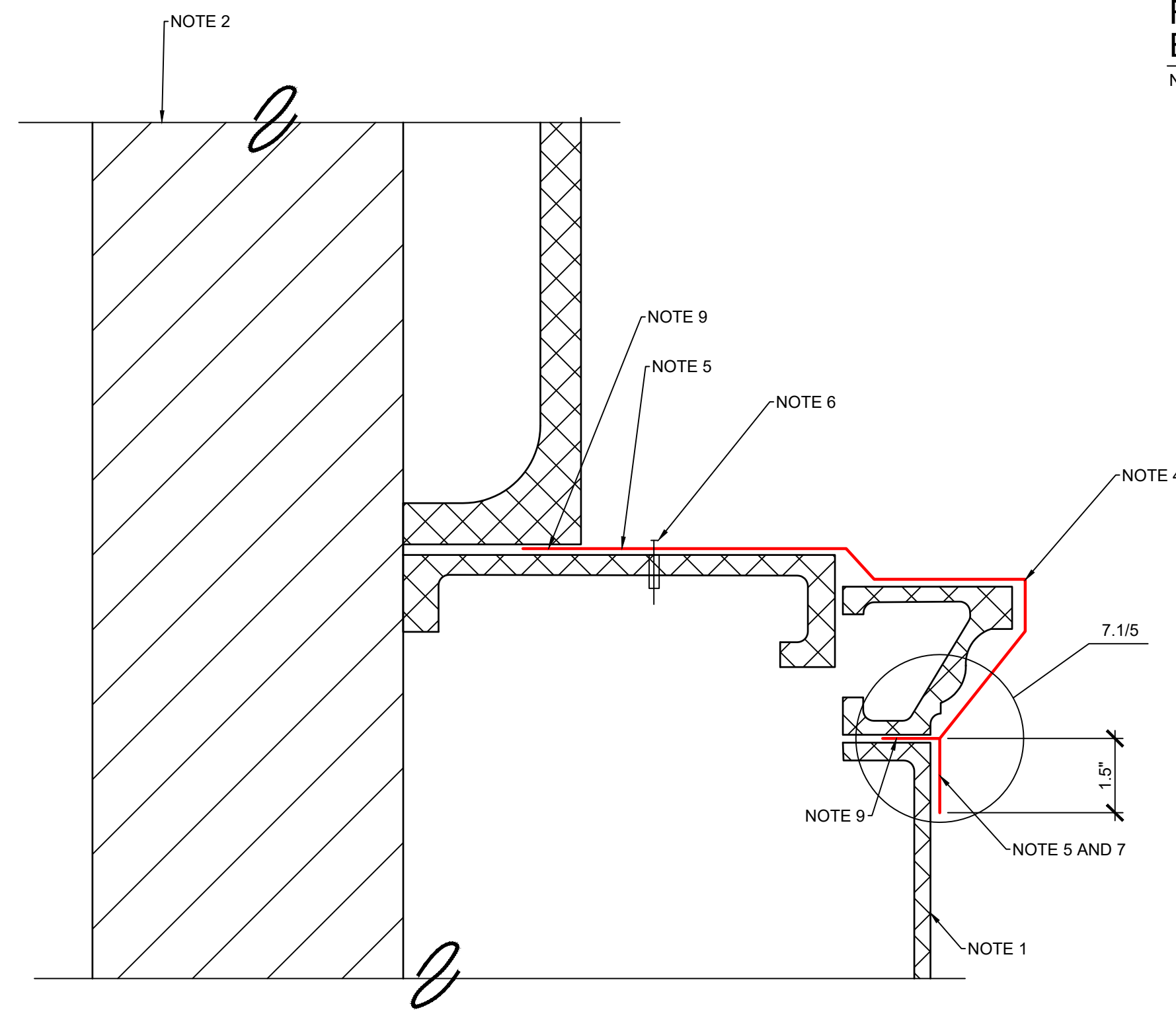
**REPAIR ITEM 6 CRACKED TC UNIT
EXTERNAL REINFORCEMENT.**

NOT TO SCALE

4/5

2/3 NOTES

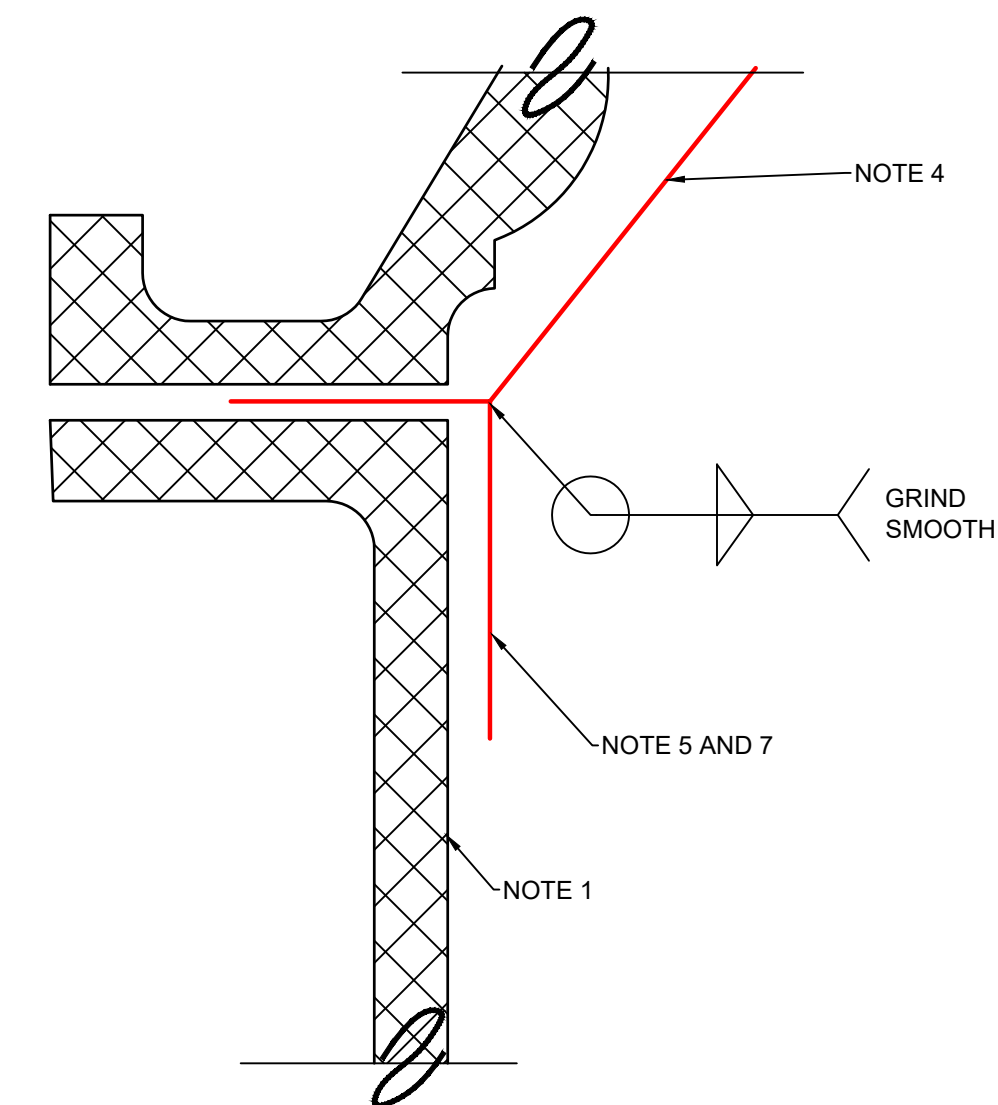
- TC UNIT TYPICAL.
- MASONRY BACKUP.
- TC EMBEDDED ANGLES, PLATES, BEAMS, AND TIES NOT SHOWN.
- STAINLESS STEEL 304 3/16" THICK X 2" WIDE FABRICATION, COAT FABRICATION, FIELD TOUCH UP COATING DAMAGE, PROVIDE A FULL SCALE MOCK UP FABRICATION FOR APPROVAL.
- EPOXY BOND THE FABRICATION TO THE TC WITH SIKADUR-31 HI-MOD GEL EPOXY, PROVIDE MINIMUM 1/16", MAXIMUM 1/8" EPOXY THICKNESS AT THE BOND SITE, PROVIDE MINIMUM 1.5" LONG X 2" WIDE BOND AREA BETWEEN THE BACKSIDE OF THE STAINLESS STEEL FABRICATION AND THE TC. REMOVE ANY COATING ON THE STEEL BOND AREA, SOLVENT WIPE THE METAL CLEAN, ROUGHEN THE STEEL SUBSTRATE TO A SURFACE MAGNITUDE ROUGHNESS SIMILAR TO 80 GRIT SANDPAPER. CLEAN THE WATER AND DETERGENT TO REMOVE SURFACE SOILING, SOLVENT WIPE SURFACE AND ROUGHEN TC SURFACE TO A SURFACE MAGNITUDE ROUGHNESS SIMILAR TO 80 GRIT SANDPAPER. HORIZONTAL TAILS MAY BE FIELD ADJUSTED (BENT) TO FIT THE TC CONDITIONS PRESENT. PROVIDE A MOCK-UP OF THE STAINLESS STEEL-TO-TC BOND FOR ENGINEER'S LOAD TESTING IN AN INCONSPICUOUS LOCATION ON THE BUILDING.
- (1) 1/4" DIAMETER A304 STAINLESS STEEL BOLT AND SIMPSON STRONG-TIE "DIAB" DROP-IN 1/4" DIAMETER ANCHOR STAINLESS STEEL DROP IN ANCHOR, CORE DRILL ANCHOR HOLE IN TC, CENTER ANCHOR ON FABRICATION 2" WIDTH, SEAL AROUND BOLT HEAD WITH SEALANT AND FULLY BED FABRICATION EACH SIDE OF BOLT MINIMUM 3" WITH SEALANT.
- MINIMUM 1.5" LONG AND 2" WIDE EPOXY BOND AREA.
- NOT USED.
- EXTEND TAIL OF FABRICATION MINIMUM 3" BEYOND THE TC FACE, GRIND/REMOVE MORTAR TO INSERT TAIL IN BED JOINT, EXTEND MORTAR REMOVAL MINIMUM 3" EACH SIDE OF FABRICATION, SEAL AROUND FABRICATION TAIL AND BED JOINT WITH SEALANT.



**REPAIR ITEM 6 CRACKED TC UNIT
EXTERNAL REINFORCEMENT.**

NOT TO SCALE

7/5



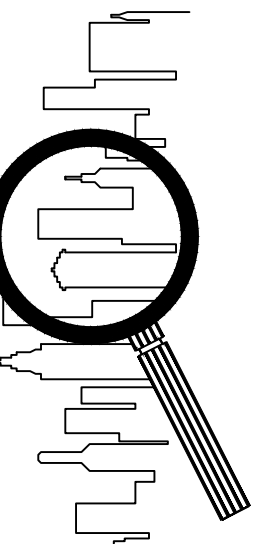
DETAIL

NOT TO SCALE

7.1/5

REPAIR ITEM DESCRIPTIONS

- REPLACE FAILED TERRA COTTA COLOR COATINGS AND GLAZE.
 - PATCH REPAIR TC UNIT.
 - REPLACE EXISTING SEALANT AND PROVIDE NEW SEALANT AT ISOLATED COVE AND BUTT JOINTS.
 - REPLACE TC UNIT JOINT MORTAR/SEALANT AT 100-PERCENT OF THE TC UNIT SKYVIEW SURFACES AS INDICATED ON THE DRAWINGS.
 - REPLACE ALL EXISTING TC CRACK SEALANT AND PROVIDE SEALANT AT UNSEALED TC UNIT CRACKS.
 - CRACKED TC UNIT EXTERNAL REINFORCEMENT.
 - REPAIR SOUTHWEST CORNER PARAPET AND CORNICE TC UNITS.
 - REPOINT TC ISOLATED MORTAR JOINTS AT MASONRY BELOW THE CORNICE AND THE BACKSIDE OF THE PARAPET WALLS AND PARTY WALL.
 - REPLACE ISOLATED CLAY BRICK UNITS.
 - REPOINT 100-PERCENT OF THE TC UNITS ABOVE THE CORNICE AS INDICATED ON THE DRAWINGS.
 - CLEAN SOUTH AND WEST BUILDING ELEVATION.
 - PARAPET WALL BACKSIDE AND PARTY WALL MASONRY WATER REPELLENT APPLICATION.
 - WET-SEAL NORTH ELEVATION WINDOW SYSTEM.
 - SEAL ATTIC VENT COVERS.
- ALTERNATE 1
- REMOVE EXISTING TC COATING.
 - VERTICAL SURFACE TC CRACK REPAIR.
 - RENEW TC COLOR COAT AND GLAZE.



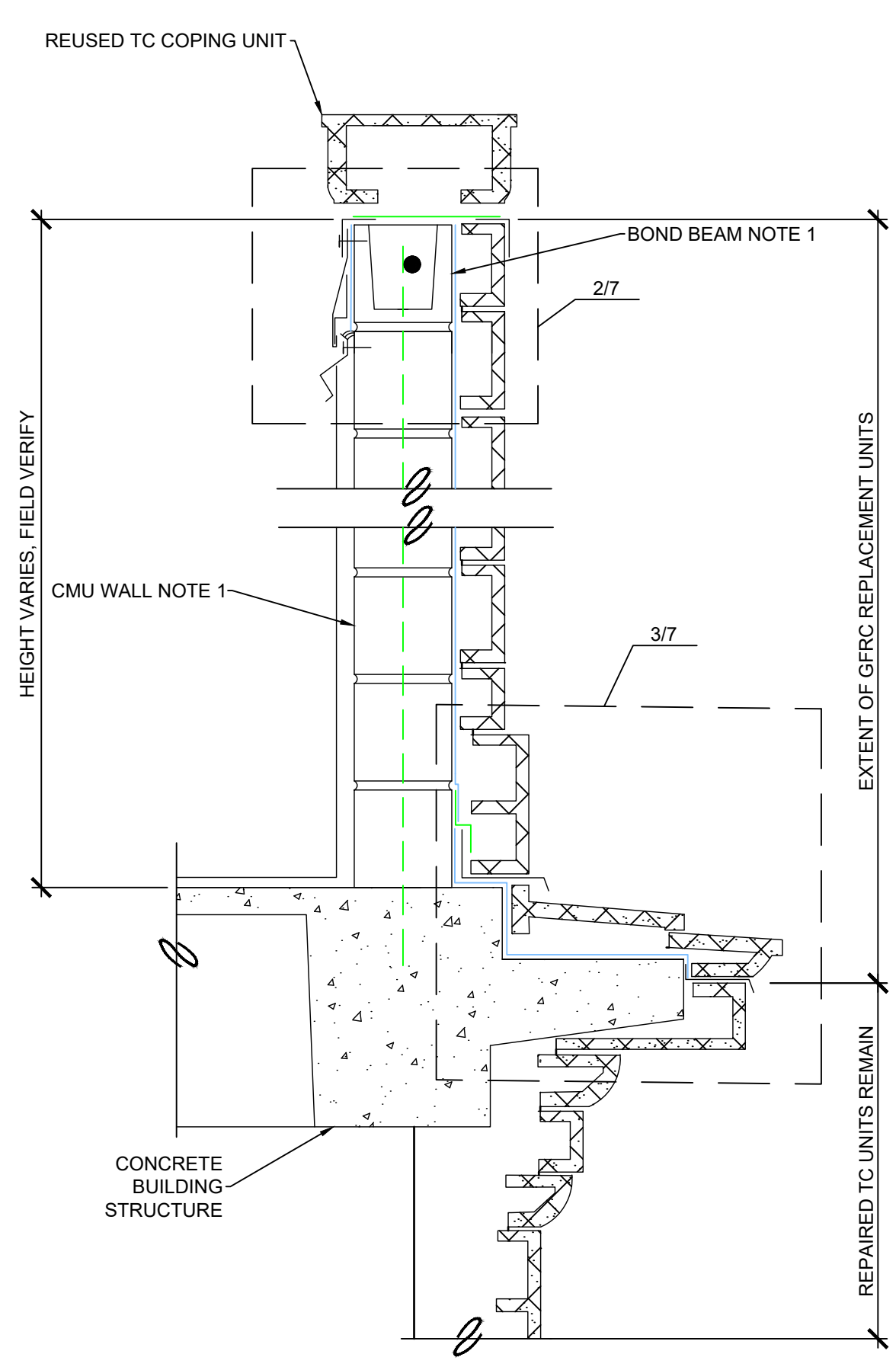
DRAWN BY: DATE: 9-5-23

CHECKED BY: DATE:

FILENAME:

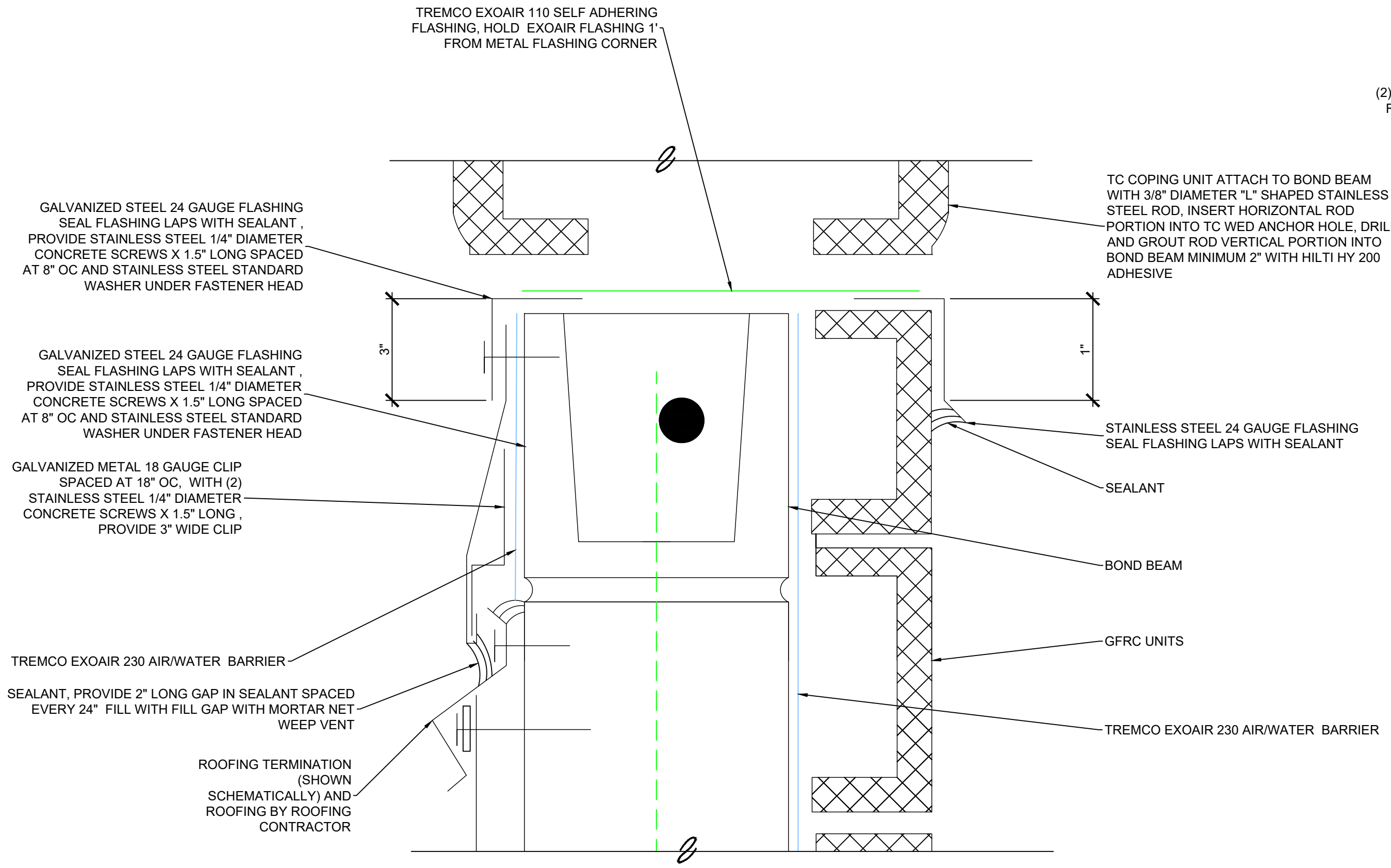
REVISIONS:

SHEET NO:

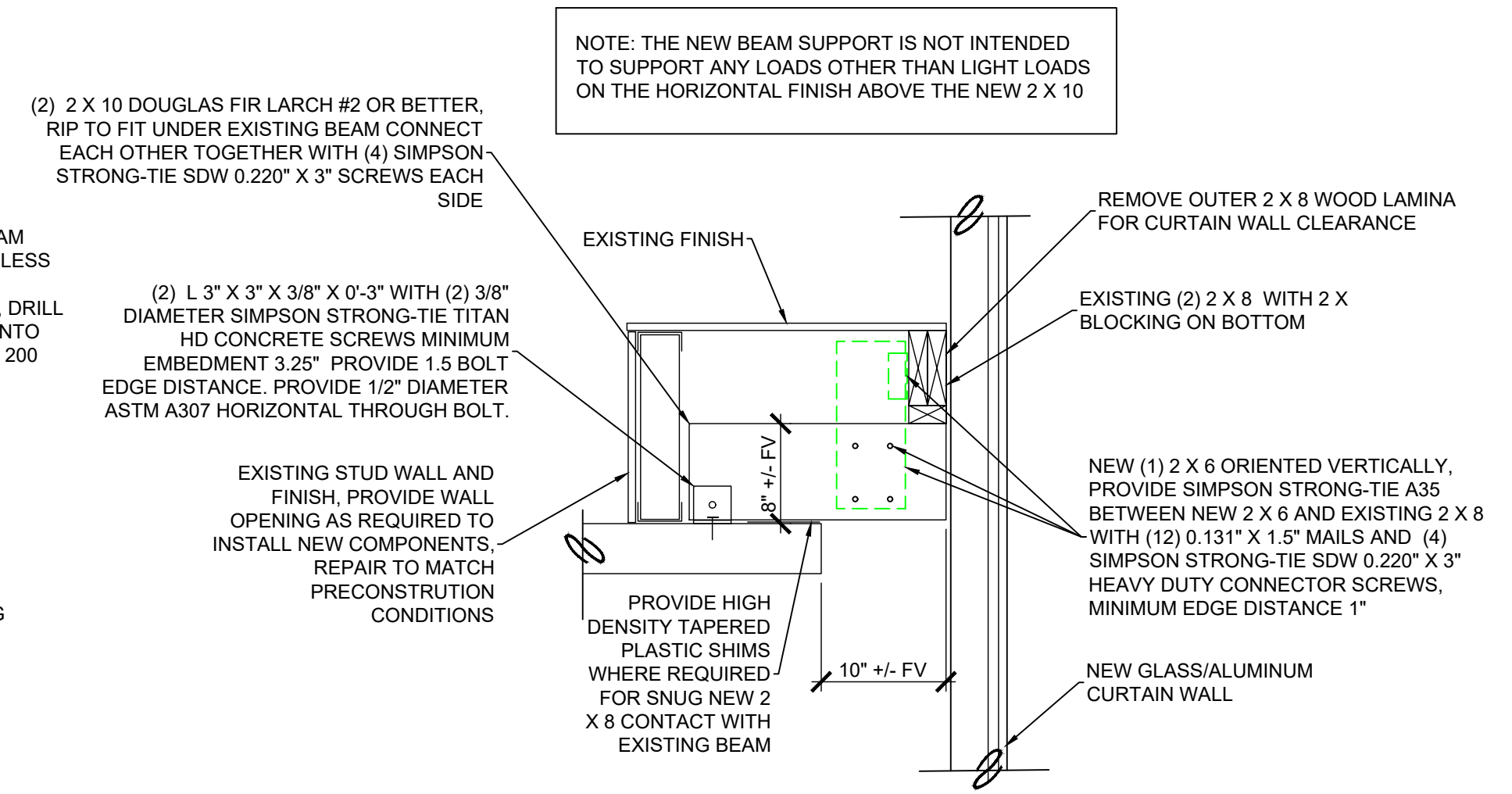


SCHEMATIC SECTION THROUGH SOUTH PARAPET WALL 1/7
NOT TO SCALE

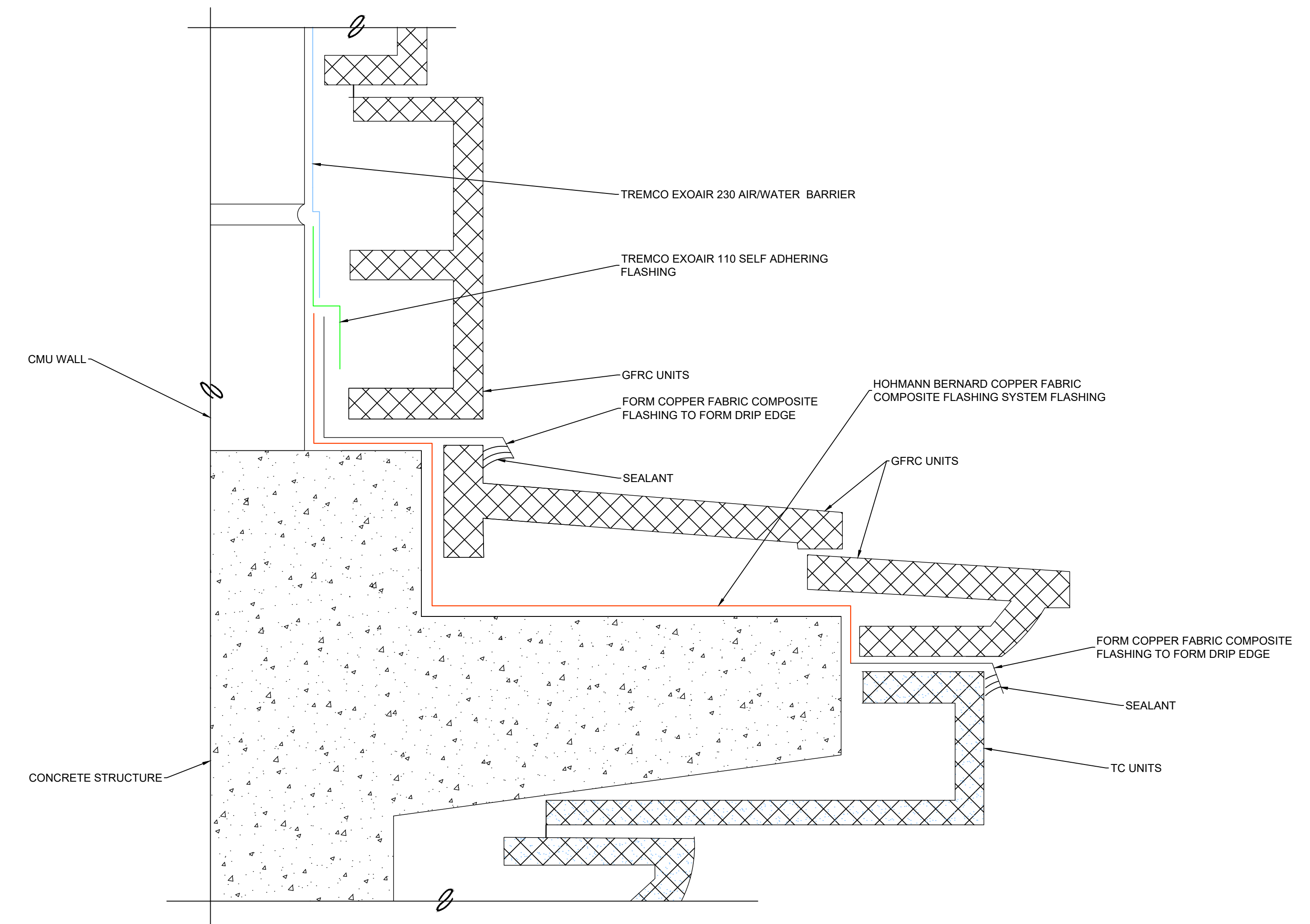
- 1/7 NOTES
- DEMOLISH EXISTING CLAY BRICK PARAPET WALL. PROVIDE 8" NORMAL WEIGHT PARTIALLY GROUTED WALL WITH #4 VERTICALLY SPACED AT 32" OC WITH BAR IN CENTER OF CMU CELL. GROUT BAR INTO EXISTING SOUND CONCRETE STRUCTURE MINIMUM 5.5" WITH HILTI HY 200 ADHESIVE. PROVIDE (1) #4 VERTICAL IN EACH END CELL BETWEEN WALL CONTRACTION JOINTS. PROVIDE 8" BOND BEAM TOP OF ALL WALLS WITH (1) #4 HORIZONTAL. PROVIDE LADDER TYPE JOINT REINFORCEMENT CONSISTING OF (2) WIRES EACH MINIMUM W 1.7 DIAMETER. SPACE REINFORCEMENT VERTICALLY AT 16" OC. PROVIDE VERTICAL FULL CMU DEPTH CONTRACTION JOINTS NOT MORE THAN 12'-0" OC. PROVIDE FOAM CONTRACTION JOINT FILLER AND TREMCO DYMNIC 100 SEALANT BOTH SIDES OF WALL. COORDINATE CMU CONSTRUCTION WITH ENGINEER AT EAST AND WEST WALL INTERSECTION WITH EXISTING MASONRY WALLS THAT REMAIN. BASED ON SITE CONDITIONS. ROUGHEN CONCRETE SLAB UNDER CMU TO PROVIDE A MINIMUM 1/4" ROUGHNESS AMPLITUDE.
 - GFRG UNITS SHOWN SCHEMATICALLY, UNIT ANCHORS NOT SHOWN.



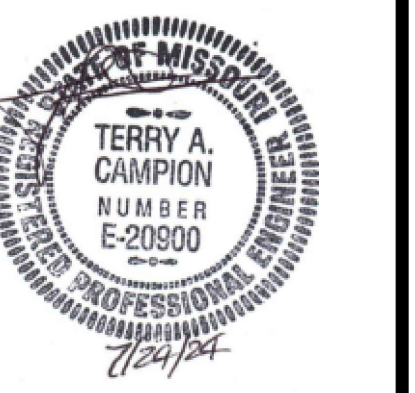
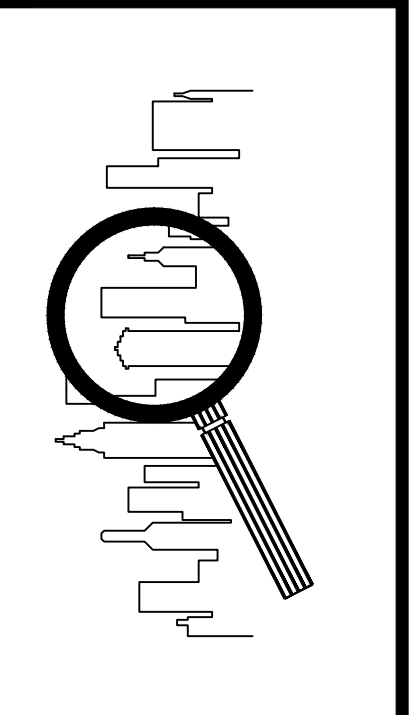
SECTION 2/7
NOT TO SCALE



SCHEMATIC SECTION THROUGH SOUTH SECOND FLOOR BEAM AT CURTAIN WALL 4/7
NOT TO SCALE



SECTION 3/7
NOT TO SCALE



DRAWN BY:	DATE: 7-24-24
CHECKED BY:	DATE:
FILENAME:	

REVISIONS:
Δ
Δ
Δ
Δ
Δ
SHEET NO: