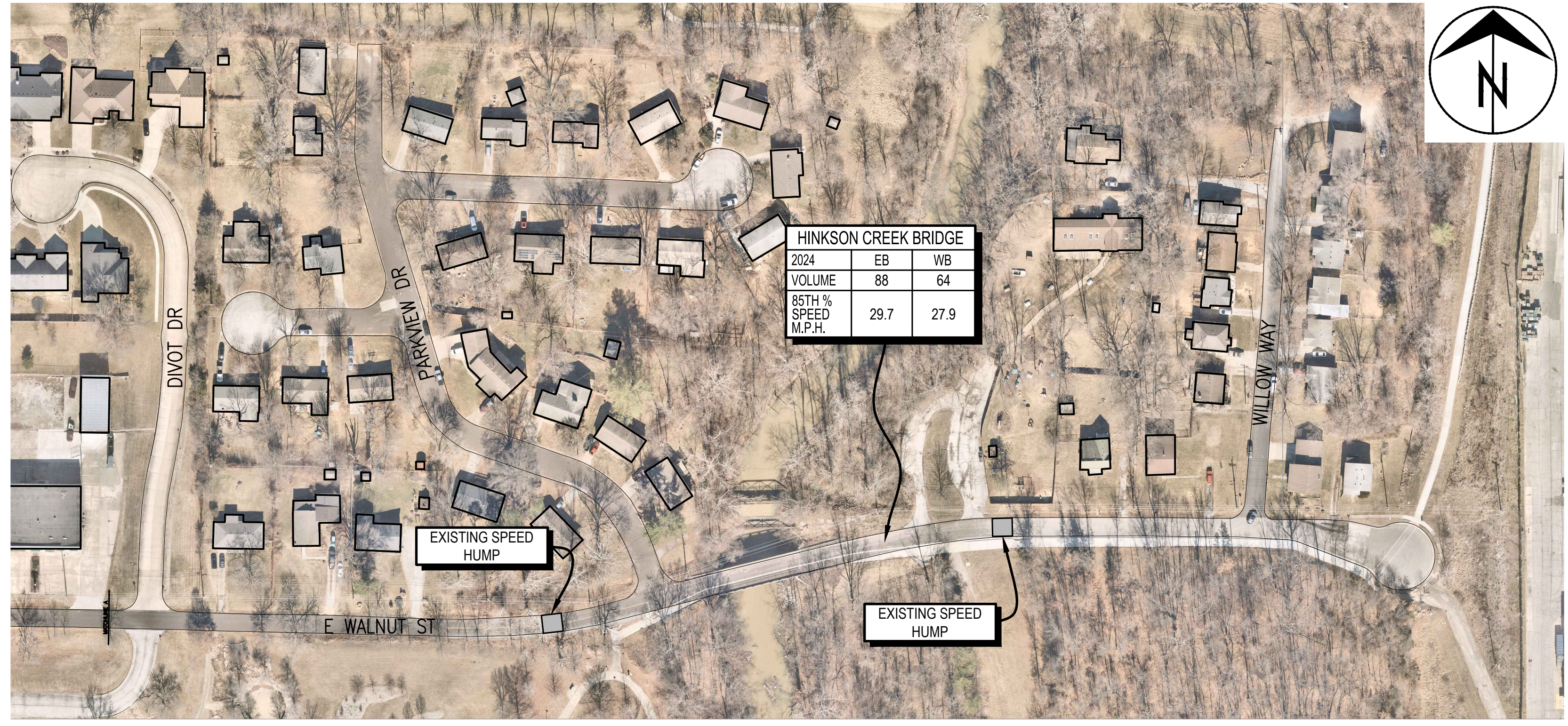


1911 E. WALNUT ST.		
2024	EB	WB
VOLUME	814	795
85TH % SPEED M.P.H.	38.9	38.9

2103 E WALNUT ST		
2024	EB	WB
VOLUME	578	595
85TH % SPEED M.P.H.	41.0	43.4

2311 E WALNUT ST		
2024	EB	WB
VOLUME	337	414
85TH % SPEED M.P.H.	38.9	39.3



HINKSON CREEK BRIDGE		
2024	EB	WB
VOLUME	88	64
85TH % SPEED M.P.H.	29.7	27.9

EXISTING SPEED HUMP

EXISTING SPEED HUMP

o:\cadd\proj\traffic\calming\east_walnut_traffic_calming.dwg

2015 Orthophoto Source: Boone County Assessor

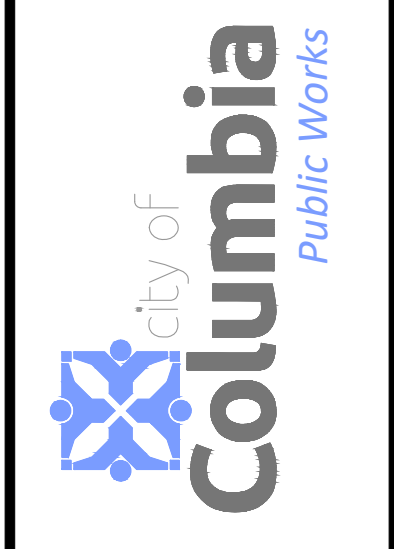
No.	Date	By	Revision

EAST WALNUT TRAFFIC CALMING

Speed and Volume Data

Mission
Provide safe, sustainable infrastructure that promotes positive communities.

701 East Broadway
P.O. Box 6015
Columbia, MO 65205
(573) 875-2493



Shane Steven Crech
Registered Professional Engineer
PE-2007011061

File No.
Scale: 1" = 100'
Date: 4/19/2024
Des.
Dwn. A.S.B.
Chk.