

Case # 201-2024 - Merideth Drive NW of Scott & Chapel Hill

Utility Easement Dedication



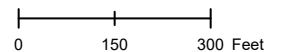
- Columbia City Limit
- City Zoning
- City Property
- Parcels

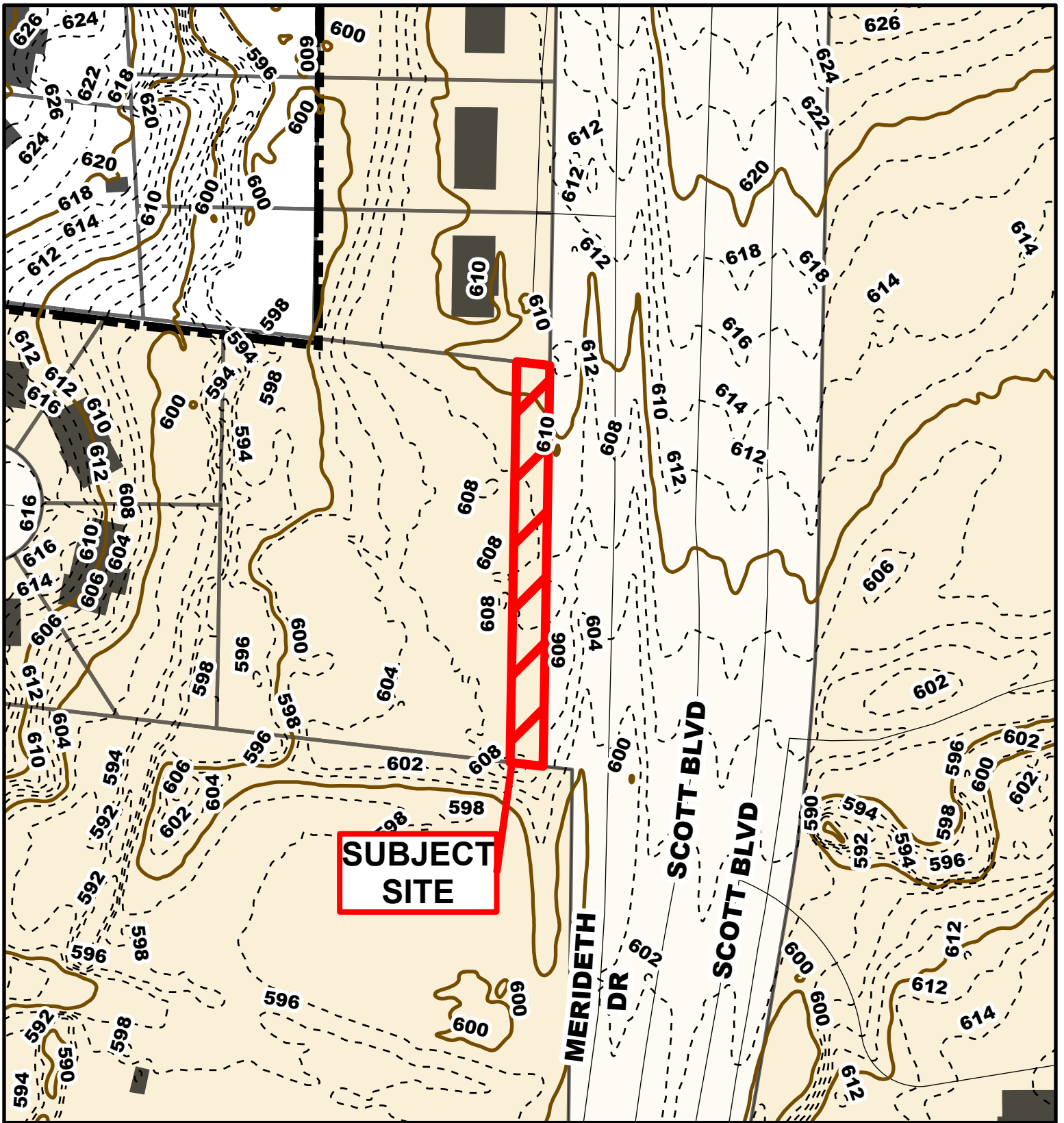


Parcel Data Source: Boone County Assessor

Created by The City of Columbia - Community Development Department

2024 Imagery: NearMap

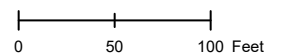


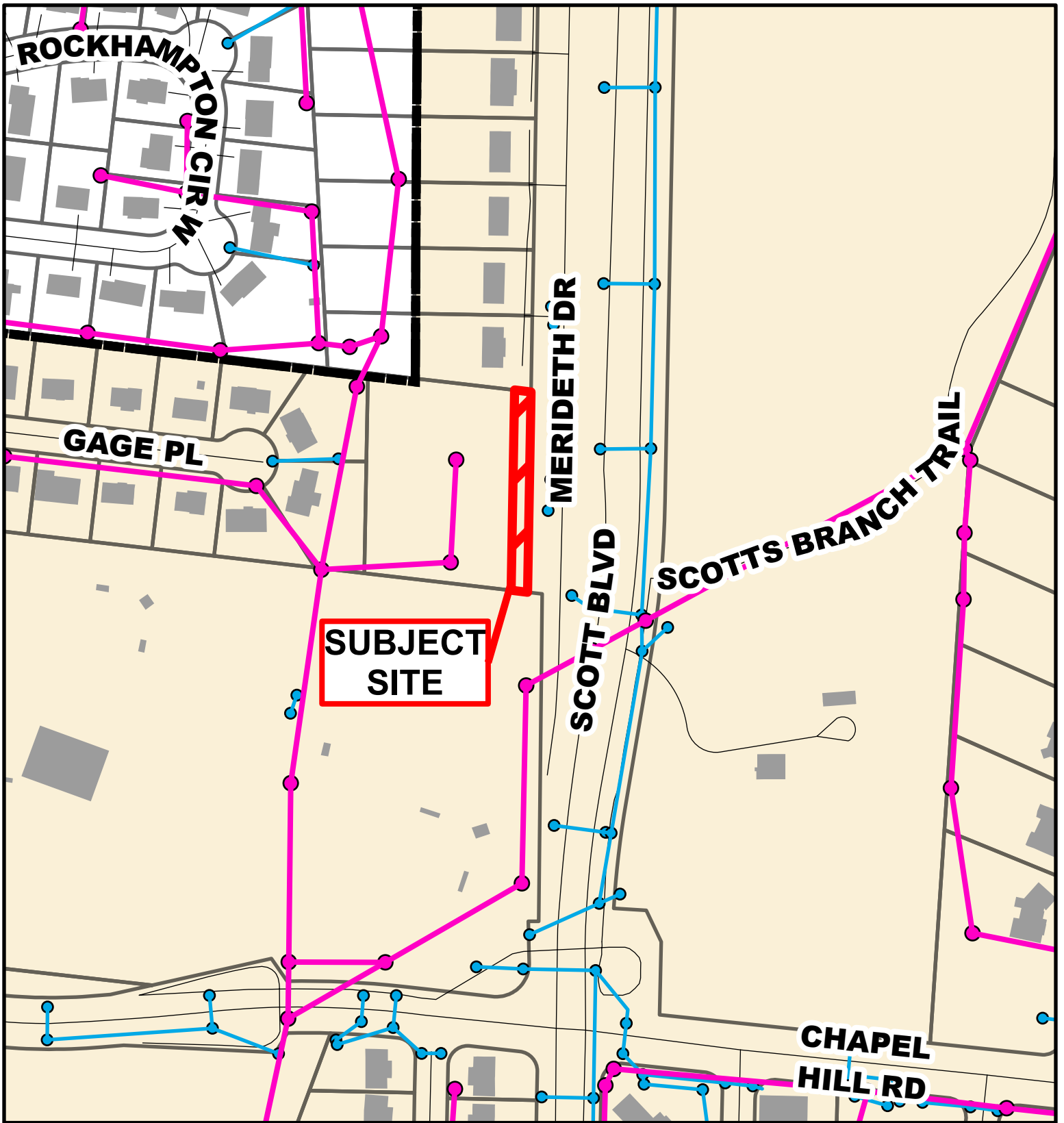


Case # 201-2024 - Merideth Drive NW of Scott & Chapel Hill Utility Easement Dedication



- 10 Foot Contour Lines
- 2 Foot Contour Lines
- City of Columbia
- Parcels





Case # 201-2024 - Merideth Drive NW of Scott & Chapel Hill Utility Easement Dedication



- City Sanitary Line
- City Storm Lines
- Parcels
- Columbia City Limit

