

LEGAL DESCRIPTION – MERIDETH DRIVE RIGHT-OF-WAY VACATION

A TRACT OF LAND LOCATED IN THE NORTHEAST QUARTER OF SECTION 20, TOWNSHIP 48 NORTH, RANGE 13 WEST, CITY OF COLUMBIA, BOONE COUNTY, MISSOURI, AND BEING MORE PARTICULARLY DESCRIBED AS FOLLOWS:

BEGINNING AT THE NORTHEAST CORNER OF LOT 1 OF ATKINSON WOODS PLAT 1, AS RECORDED IN PLAT BOOK 29, PAGE 19, BOONE COUNTY, MISSOURI RECORDS, THENCE S 83°21'35" E, 25.12 FEET; THENCE S 01°03'35" W, 304.78 FEET; THENCE N 83°20'15" W, 25.12 FEET; THENCE N 01°03'35" E, 304.77 FEET TO THE POINT OF BEGINNING AND CONTAINING 7,620 SQUARE FEET.

* BEARINGS ARE REFERENCED TO GRID NORTH OF THE MISSOURI STATE PLANE COORDINATE SYSTEM NAD83(2011), EPOCH DATE 2010.00 CENTRAL ZONE, BY GPS OBSERVATIONS, USING MoDOT VRS NETWORK.

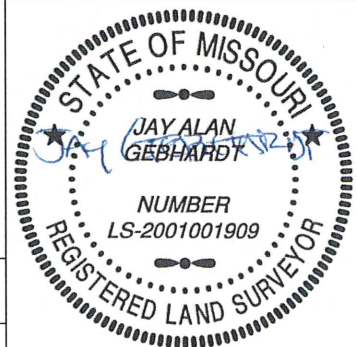
THIS DOCUMENT HAS BEEN ELECTRONICALLY SIGNED, SEALED AND DATED.



A CIVIL GROUP, LLC
MISSOURI LIMITED LIABILITY COMPANY
3401 BROADWAY BUSINESS PARK CT
SUITE 105
COLUMBIA, MISSOURI 65203
PH: (573) 817-5750

EXHIBIT A
SHEET 1 OF 2

ACG JOB #:
STAR24-01

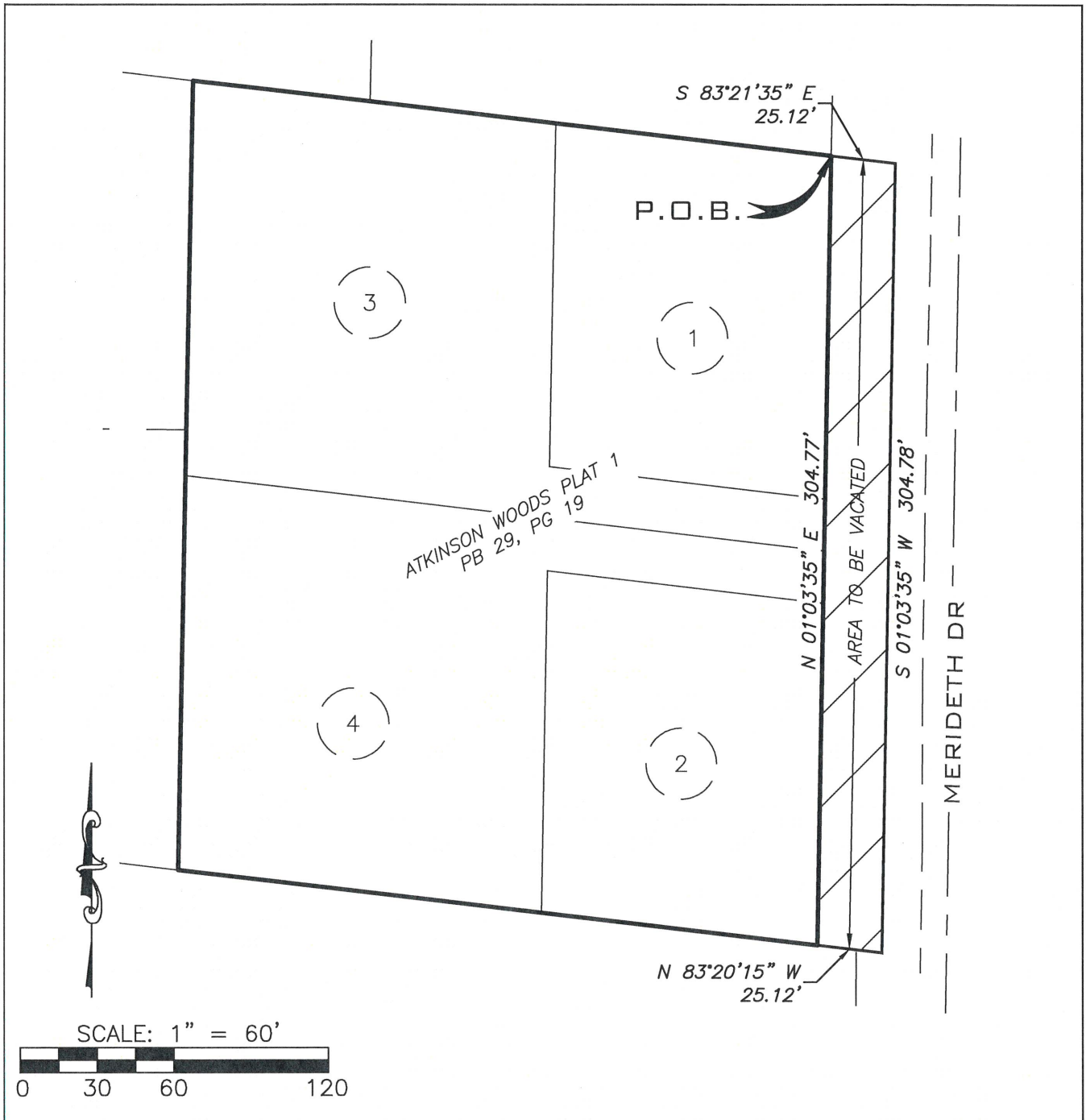


MISSOURI PROFESSIONAL LAND SURVEYING
CERTIFICATE OF AUTHORITY: 2001006115

PROJECT NAME/DESCRIPTION: ATKINSON WOODS PLAT 2

LOCATION: CITY OF COLUMBIA, BOONE COUNTY, MISSOURI

JAY GEBHARDT
LS-2001001909
AUGUST 14, 2024




A CIVIL GROUP, LLC
 MISSOURI LIMITED LIABILITY COMPANY
 3401 BROADWAY BUSINESS PARK CT
 SUITE 105
 COLUMBIA, MISSOURI 65203
 PH: (573) 817-5750

EXHIBIT A
 SHEET 2 OF 2

ACG JOB #:
 STAR24-01



MISSOURI PROFESSIONAL LAND SURVEYING
 CERTIFICATE OF AUTHORITY: 2001006115

PROJECT NAME/DESCRIPTION: ATKINSON WOODS PLAT 2

LOCATION: CITY OF COLUMBIA, BOONE COUNTY, MISSOURI

JAY GEBHARDT
 LS-2001001909
 AUGUST 14, 2024