





Case # 96-2023 - SE Corner Veterans United & S. Providence Rezoning



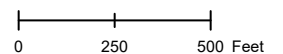
-  Columbia City Limits
-  City Zoning
-  City Property
-  Parcels

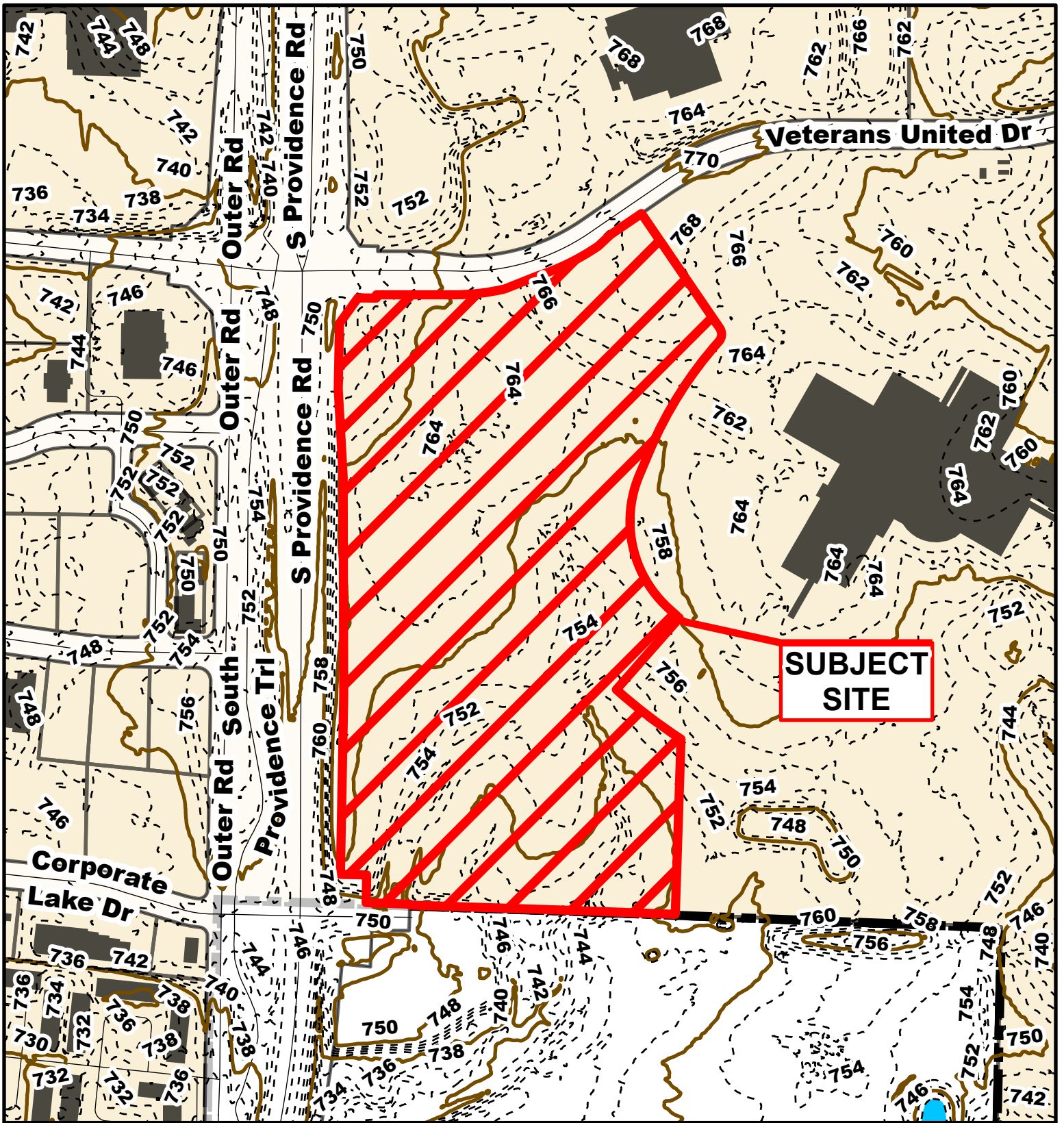


Parcel Data Source: Boone County Assessor

Created by The City of Columbia - Community Development Department

2022 Imagery: NearMap

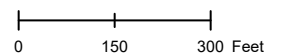


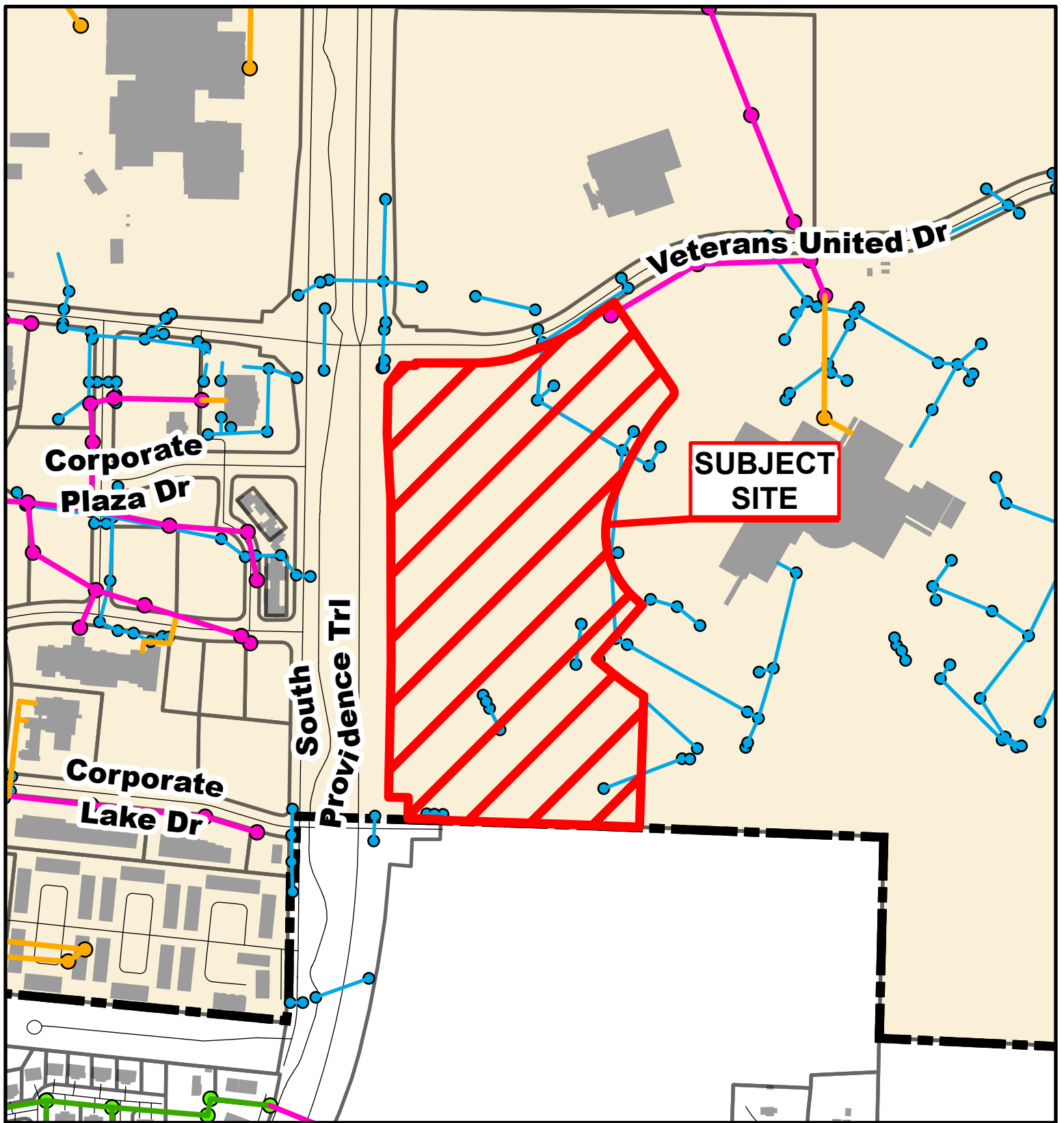


Case # 96-2023 - SE Corner Veterans United & S. Providence Rezoning



- 10 Foot Contour Lines
- 2 Foot Contour Lines
- Parcels
- City of Columbia





Case # 96-2023 - SE Corner Veterans United & S. Providence Rezoning



- City Sanitary Line
- City Storm Lines
- BCRSD Sanitary Line
- Parcels
- Private Sanitary Line
- Columbia City Limits

