

Case # 265-2023 - 701 Angels Rest Way Easement Vacation



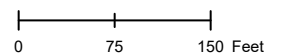
- Columbia City Limit
- City Zoning
- City Property
- Parcels

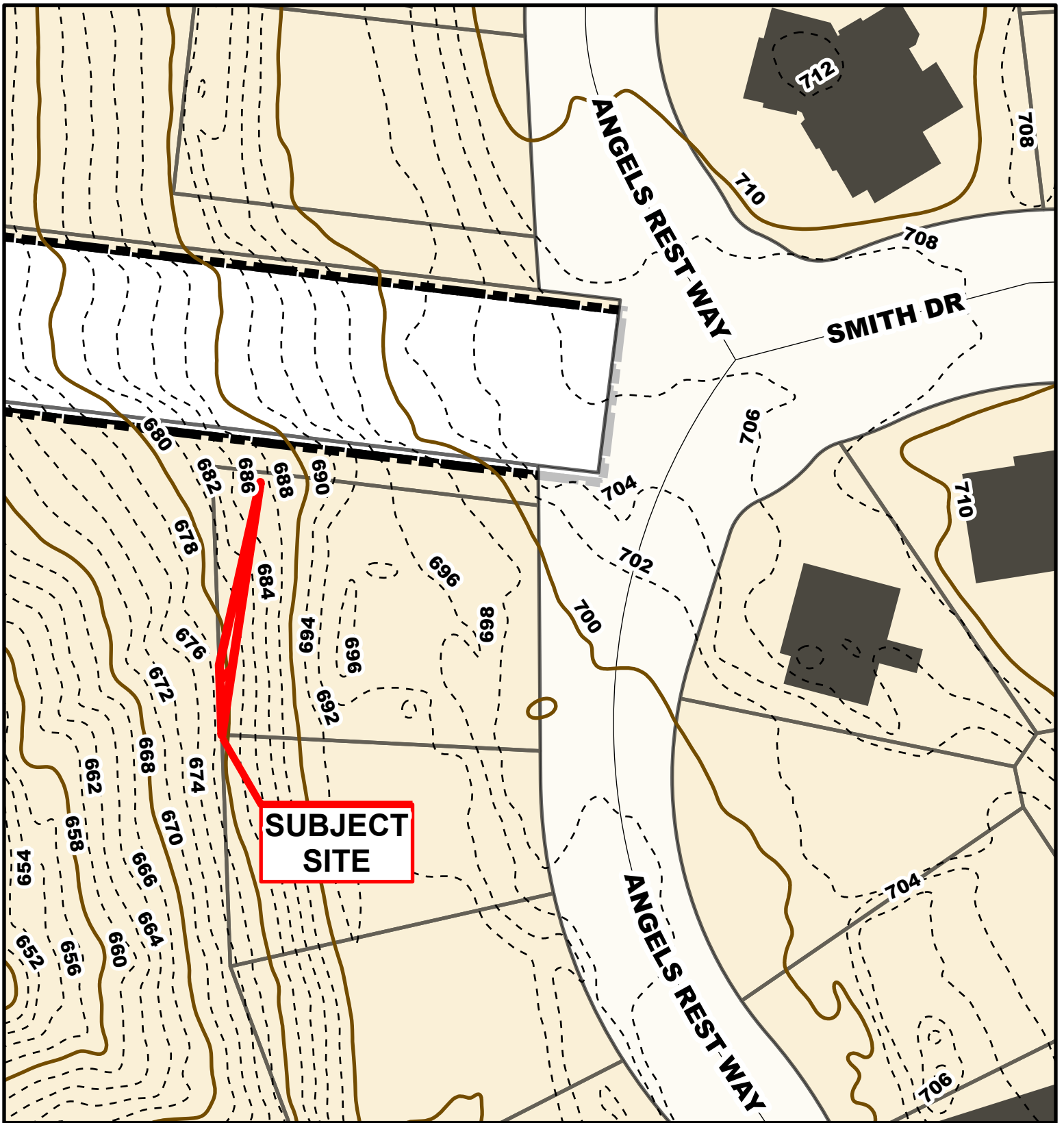


Parcel Data Source: Boone County Assessor

Created by The City of Columbia - Community Development Department

2022 Imagery: NearMap

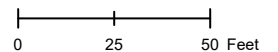


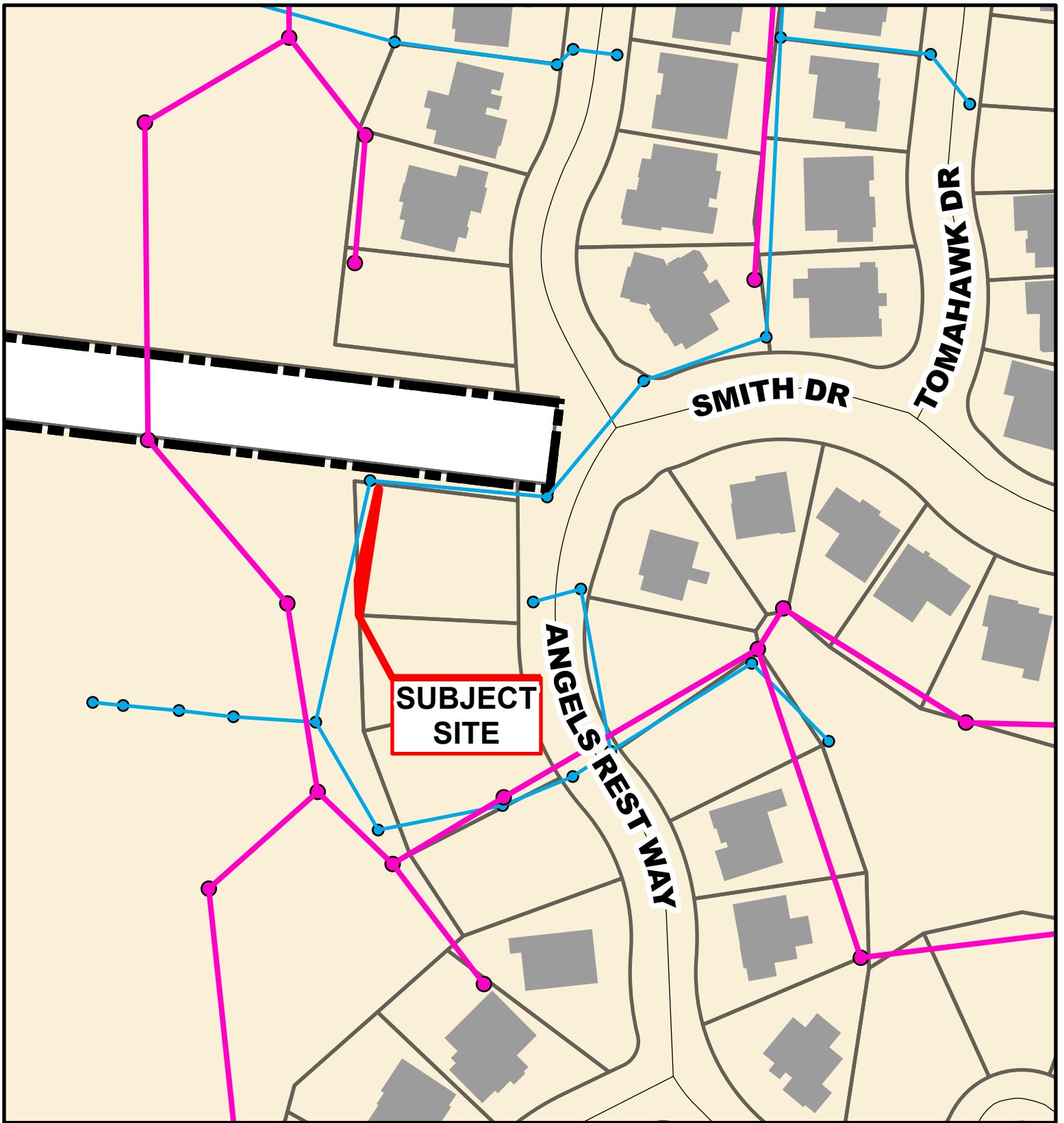


Case # 265-2023 - 701 Angels Rest Way Easement Vacation



- 10 Foot Contour Lines
- 2 Foot Contour Lines
- City of Columbia
- Parcels





Case # 265-2023 - 701 Angels Rest Way Easement Vacation



- City Sanitary Line
- City Storm Lines
- Parcels
- Columbia City Limits

