

# Case # 6-2024 - 4605 Copperstone Court Final Plat



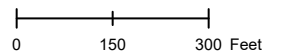
- Columbia City Limit
- City Zoning
- City Property
- Parcels



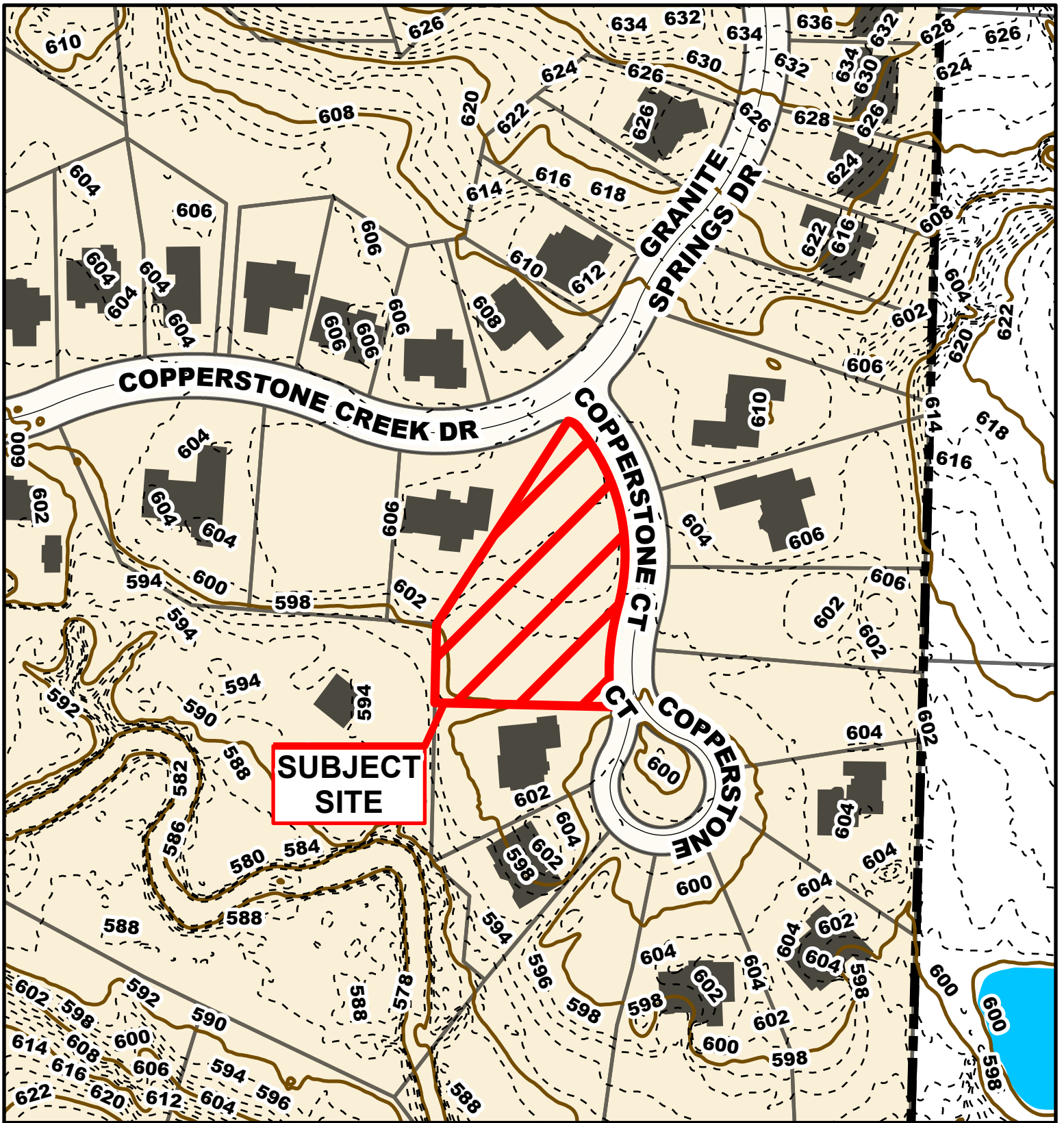
Parcel Data Source: Boone County Assessor

Created by The City of Columbia - Community Development Department

2022 Imagery: NearMap



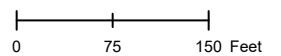
Source: Nearmap - <https://www.nearmap.com/us/en>

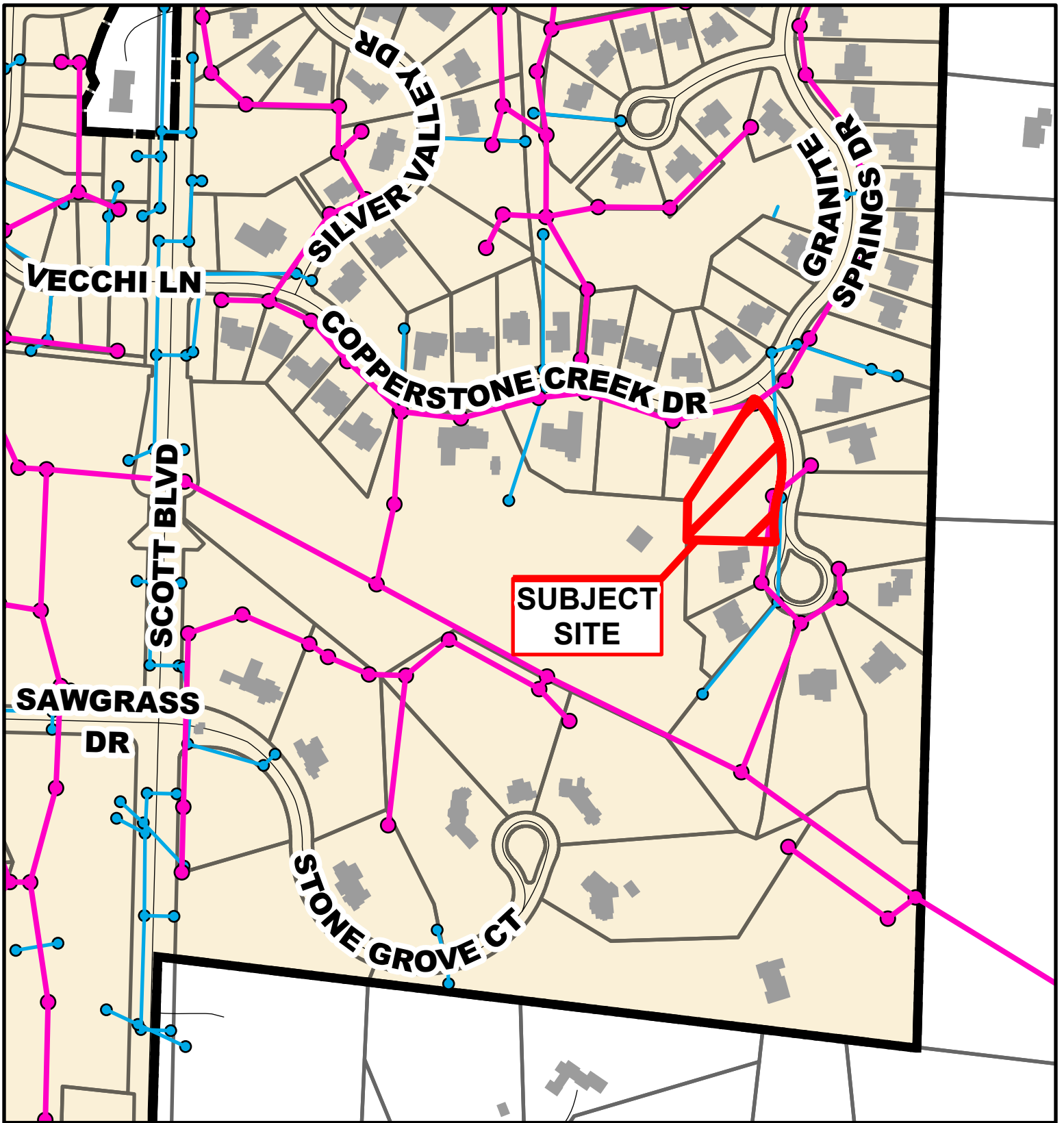


## Case # 6-2024 - 4605 Copperstone Court Final Plat



- 10 Foot Contour Lines
- 2 Foot Contour Lines
- City of Columbia
- Parcels





## Case # 6-2024 - 4605 Copperstone Court Final Plat



- City Sanitary Line
- City Storm Lines
- Parcels
- Columbia City Limits

