

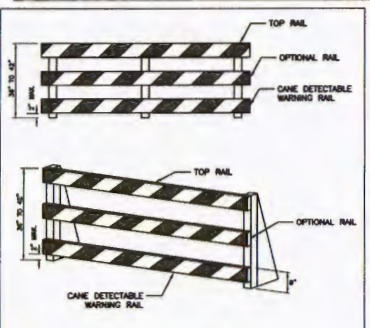


GENERAL NOTES

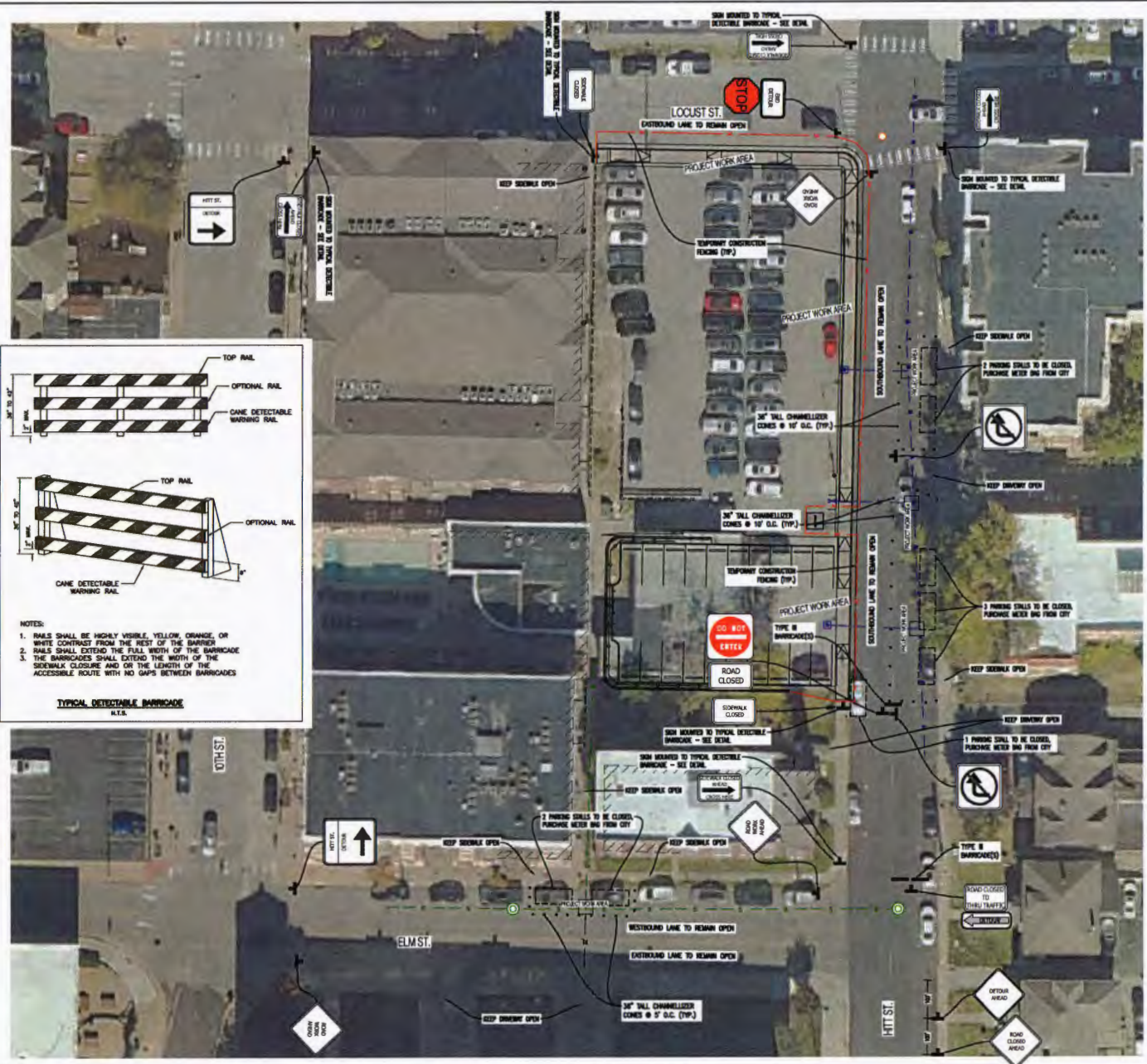
TRAFFIC CONTROL DEVICES SHALL COMPLY WITH THE MUTCD.
 CONTRACTOR SHALL MAINTAIN A MINIMUM LANE WIDTH OF 11' AT ALL TIMES FOR ANY OPEN LANE OF TRAFFIC.
 CONTRACTOR SHALL REFER TO THE CURRENT EDITION OF THE MUTCD MANUAL OF TRAFFIC CONTROL FOR FIELD OPERATIONS FOR INFORMATION ON THE PROPER DEPLOYMENT OF TRAFFIC CONTROL DEVICES.
 CONTRACTOR SHALL KEEP ALL ADJACENT DRIVEWAYS OPEN AT ALL TIMES.
 CONTRACTOR SHALL VERIFY CITY OF COLUMBIA COMBINATION DEVELOPMENT THREE INDEX PLOTS TO ANY CLOSURE MADE ACCORDING TO THIS PLAN. ALL TIMES FOR CLOSURE SHALL BE APPROVED BY THE CITY OF COLUMBIA PRIOR TO IMPLEMENTATION OF THIS PLAN.
 CONTRACTOR IS RESPONSIBLE FOR NOTIFYING THE RED BIRD OF ANY TECHNOLOGY (SMA-114), IMMEDIATELY PRIOR TO CLOSURE OF STREET DURING CONSTRUCTION FOR INSPECTIONS AND HOW THESE WORK IS COMPLETE AND STREET IS REOPENED.

TRAFFIC CONTROL DEVICE LEGEND

	PLACE STANDARD HIGHWAY SIGN (MUTCD SIGN # W02-1) SHOULD READ "ROAD WORK AHEAD". SIGN SHALL BE 24" X 24" MIN.
	PLACE STANDARD HIGHWAY SIGN (MUTCD SIGN # W04-5) SHOULD READ "NO DETOUR". SIGN SHALL BE 24" X 18" MIN.
	CHANNELIZER CONE/WARNER 36" TALL MIN.
	PLACE STANDARD HIGHWAY SIGN (MUTCD SIGN # R3-1) SHOULD HAVE NO RIGHT TURN SYMBOL. SIGN SHALL BE 24" X 24" MIN.
	PLACE STANDARD HIGHWAY SIGN (MUTCD SIGN # W5-1) SHOULD READ "DO NOT ENTER". SIGN SHALL BE 24" X 24" MIN.
	PLACE STANDARD HIGHWAY SIGN (MUTCD SIGN # W04-5) SHOULD READ "DETOUR" WITH LEFT, RIGHT, OR STRAIGHT DIRECTION ARROW SYMBOL. SIGN SHALL BE 24" X 30" MIN.
	PLACE STANDARD HIGHWAY SIGN (MUTCD SIGN # W04-10) SHOULD READ "ROAD CLOSED TO THRU TRAFFIC". SIGN SHALL BE 24" X 18" MIN.
	PLACE STANDARD HIGHWAY SIGN (MUTCD SIGN # R11-2) SHOULD READ "ROAD CLOSED". SIGN SHALL BE 24" X 12" MIN.
	PLACE STANDARD HIGHWAY SIGN (MUTCD SIGN # W02-3) SHOULD READ "ROAD CLOSED AHEAD". SIGN SHALL BE 24" X 24" MIN.
	PLACE STANDARD HIGHWAY SIGN (MUTCD SIGN # W02-2) SHOULD READ "DETOUR AHEAD". SIGN SHALL BE 24" X 24" MIN.
	PLACE STANDARD HIGHWAY SIGN (MUTCD SIGN # R1-1) SHOULD READ "STOP". SIGN SHALL BE 30" X 30" MIN.



- NOTES:**
1. RAILS SHALL BE HIGHLY VISIBLE, YELLOW, ORANGE, OR WHITE CONTRAST FROM THE REST OF THE BARRICADE
 2. RAILS SHALL EXTEND THE FULL WIDTH OF THE BARRICADE
 3. THE BARRICADES SHALL EXTEND THE WIDTH OF THE SIDEWALK CLOSURE AND OR THE LENGTH OF THE ACCESSIBLE ROUTE WITH NO GAPS BETWEEN BARRICADES



REVISIONS:

NO.	DATE	DESCRIPTION

APPROVED BY: [Signature]

DESIGNED BY: ATG

DRAWN BY: ATG

PROJECT NO.: 220464

SHEET: CITY TC

OWNER: CITY OF COLUMBIA

207-209 HITT STREET - DEMOLISH BUILDING
CP24121
COLUMBIA, MO: CLAY COUNTY, MISSOURI