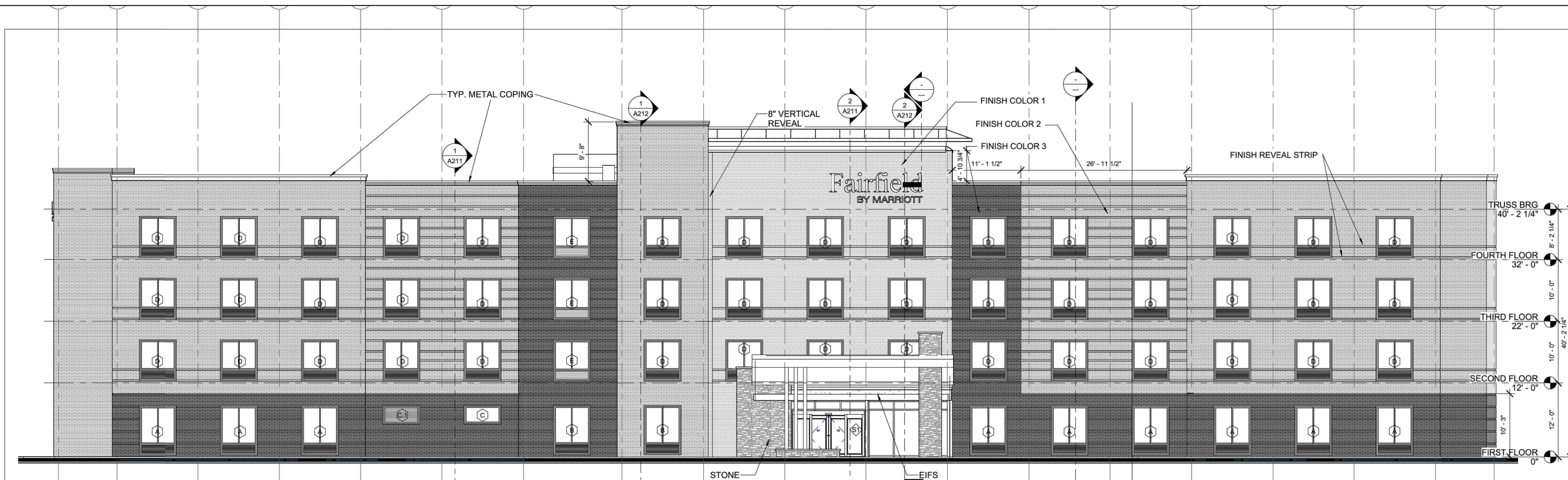
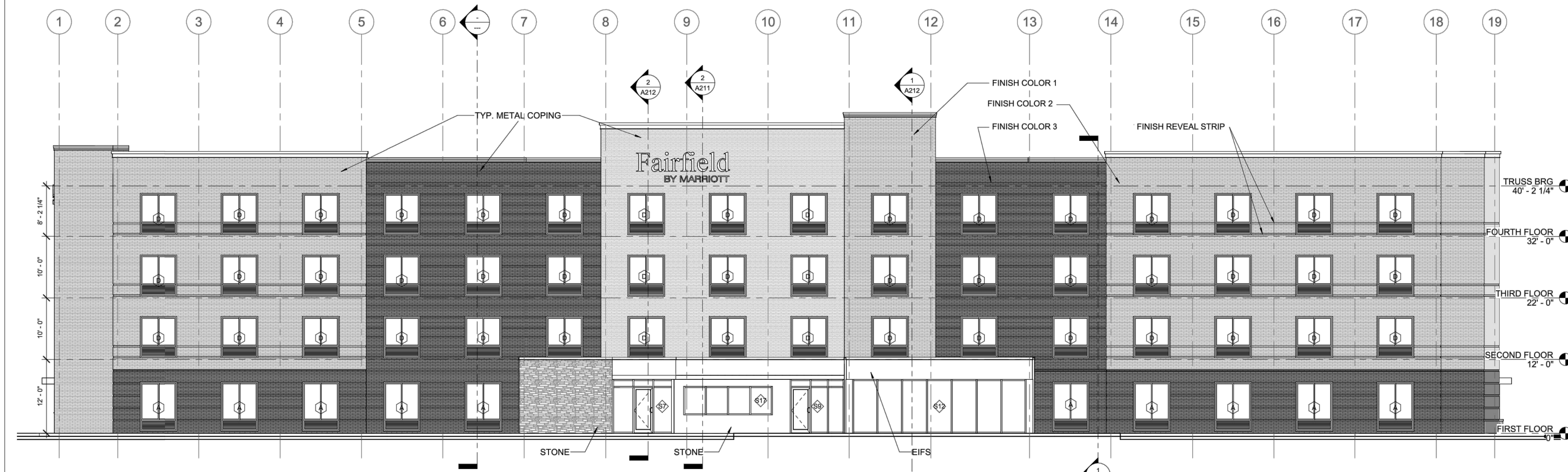


Exhibit B



2 EAST FACING TRU HOTEL & HWY 63
SCALE: 1" = 10'



1 WEST FACING NOCONA PARKWAY
SCALE: 1" = 10'

DESIGN ALLIANCE
architects
6507 DELANEY BLVD., SUITE 100
COLUMBIA, MISSOURI 65203
PHONE 314.863.1313 FAX 314.863.1303 email: info@daa.com

A NEW HOTEL
FAIRFIELD INN
NOCONA PARKWAY
COLUMBIA, MISSOURI

60% REVIEW

No.	Description	Date

BUILDING ELEVATIONS

Project number 2024053
Date Issue Date

A201

NOTIFY ARCHITECT IN EVENT OF DISCREPANCIES, OMISSIONS, AND/OR CONFLICTS IN THE DRAWINGS OR SPECIFICATIONS. THE CONTRACTOR IS NOT AUTHORIZED TO SCALE THE DRAWINGS. ALL QUESTIONS IN REFERENCE TO THE CONTRACT DOCUMENTS SHALL BE IMMEDIATELY DIRECTED TO THE ARCHITECT.

55% MINIMUM OF FACADE TO BE GLAZING, STONE/BRICK, DOORS, LOUVERS, ARCHITECTURAL METALS, WITH A MINIMUM OF 17% FENESTRATION. MAXIMUM OF 45% OF FACADE TO BE EIFS. (NOTE: DIMENSIONS SHOWN ARE NOT FINAL AND WILL BE DETERMINED DURING BUILDING DESIGN.)

REVISIONS:

NO.	DATE
ORIGINAL	10/15/2024

THIS SHEET HAS BEEN SIGNED, SEALED AND DATED ELECTRONICALLY

EXHIBIT
DRAWING
NOT FOR
CONSTRUCTION

JESSE RAY STEPHENS
MO LICENSE: 2010000868

PREPARED BY:
CROCKETT
ENGINEERS & ARCHITECTS
1008 W. MISSOURI BLVD.
COLUMBIA, MISSOURI 65203
(314) 487-0299
www.crockettingeering.com
Crockett Engineering Consultants, LLC
Missouri Certificate of Authority
#000000001

OWNER:
P106 LLC
4220 PHILIPS FARM ROAD
COLUMBIA, MO 65201

FAIRFIELD INN

DRAWING INCLUDES:

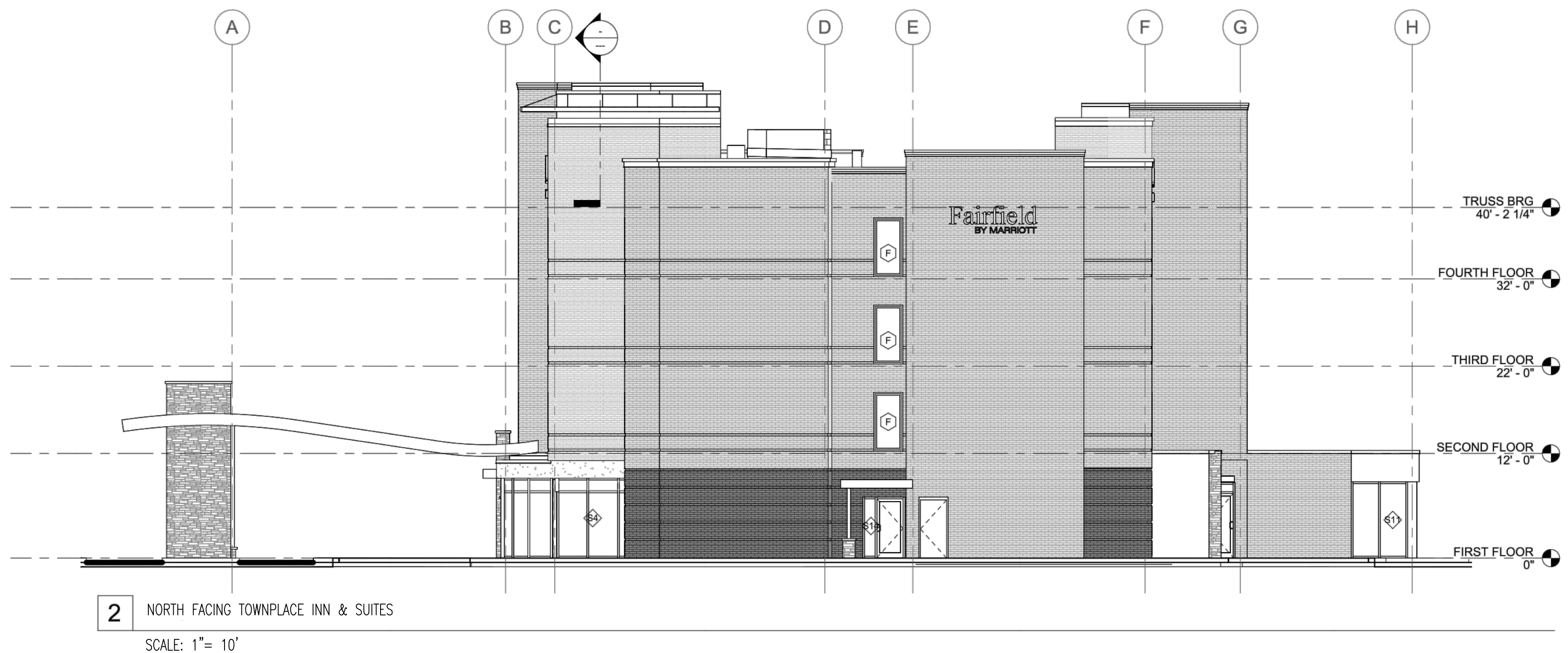
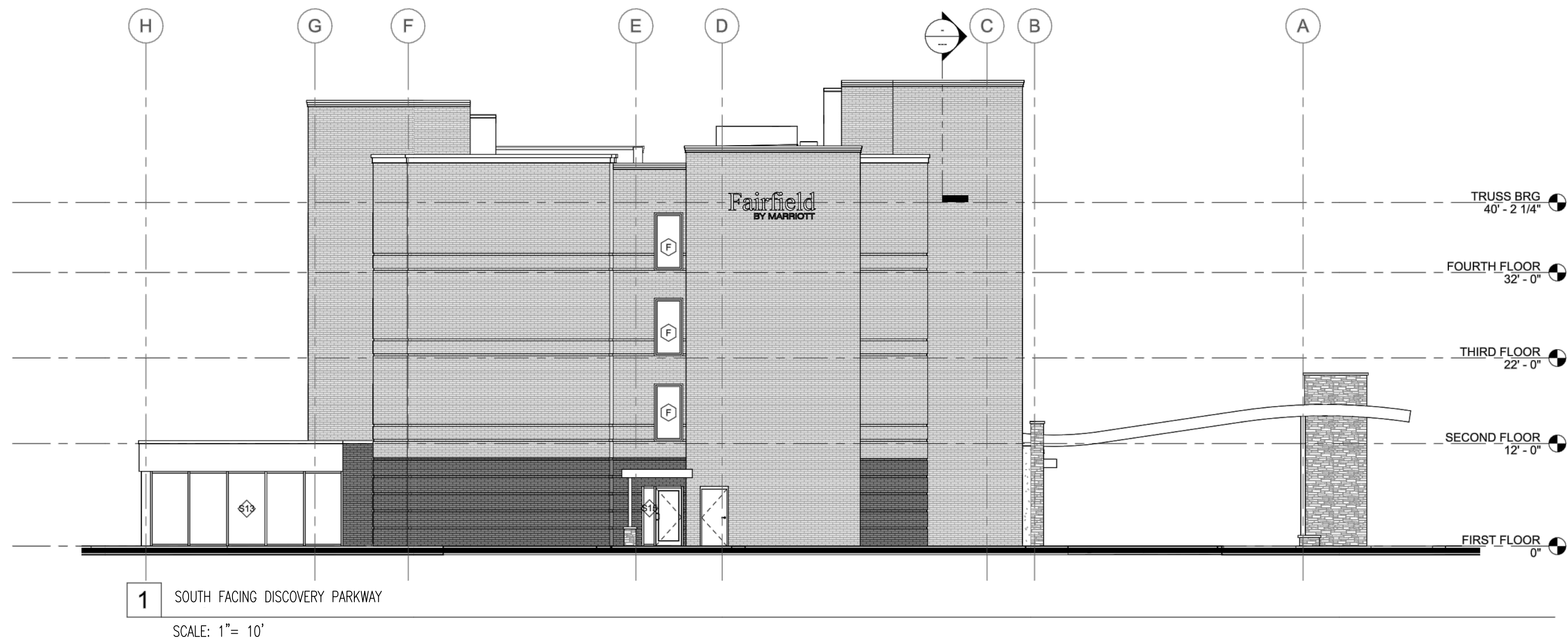
PRELIMINARY
BUILDING
ELEVATIONS

DESIGNED: JRS

DRAWN: JRS

PROJECT NO: 210249

SHEET:
1/2



DESIGN ALLIANCE architects
 8567 DELMAR BOULEVARD, SAINT LOUIS, MISSOURI 63112
 PHONE 314.668.1313 FAX 314.668.1358 email: daa@daa.com

A NEW HOTEL
FAIRFIELD INN
 NOCONA PARKWAY
 COLUMBIA, MISSOURI

60% REVIEW

No.	Description	Date

BUILDING ELEVATIONS

Project number 2024053
 Date Issue Date

A202

NOTIFY ARCHITECT IN EVENT OF DISCREPANCIES, OMISSIONS, AND/OR CONFLICTS IN THE DRAWINGS OR SPECIFICATIONS. THE CONTRACTOR IS NOT AUTHORIZED TO SCALE THE DRAWINGS. ALL QUESTIONS IN REFERENCE TO THE CONTRACT DOCUMENTS SHALL BE IMMEDIATELY DIRECTED TO THE ARCHITECT.

55% MINIMUM OF FACADE TO BE GLAZING, STONE/BRICK, DOORS, LOUVERS, ARCHITECTURAL METALS, WITH A MINIMUM OF 17% FENESTRATION. MAXIMUM OF 45% OF FACADE TO BE EIFS. (NOTE: DIMENSIONS SHOWN ARE NOT FINAL AND WILL BE DETERMINED DURING BUILDING DESIGN.)

REVISIONS:

NO.	DATE
ORIGINAL	10/15/2024

THIS SHEET HAS BEEN SIGNED, SEALED AND DATED ELECTRONICALLY

EXHIBIT DRAWING NOT FOR CONSTRUCTION

JESSE RAY STEPHENS
 MO LICENSE: 2010000868

PREPARED BY:
CROCKETT
 ENGINEERS & ARCHITECTS
 1008 W. MISSOURI BLVD
 COLUMBIA, MISSOURI 65203
 (314) 487-0299
 www.crockettengineering.com
 Crockett Engineering Consultants, LLC
 Missouri Certificate of Authority
 #000000100

OWNER:
 P106 LLC
 4220 PHILIPS FARM ROAD
 COLUMBIA, MO 65201

FAIRFIELD INN

DRAWING INCLUDES:
 PRELIMINARY BUILDING ELEVATIONS

DESIGNED: JRS
 DRAWN: JRS
 PROJECT NO: 210249
 SHEET: 2/2