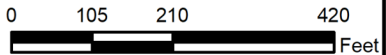


Source: Nearmap. <https://www.nearmap.com/us/en>

Case # 226-2022 - Mills Estates Plat III Final Plat

 Parcels  City Zoning

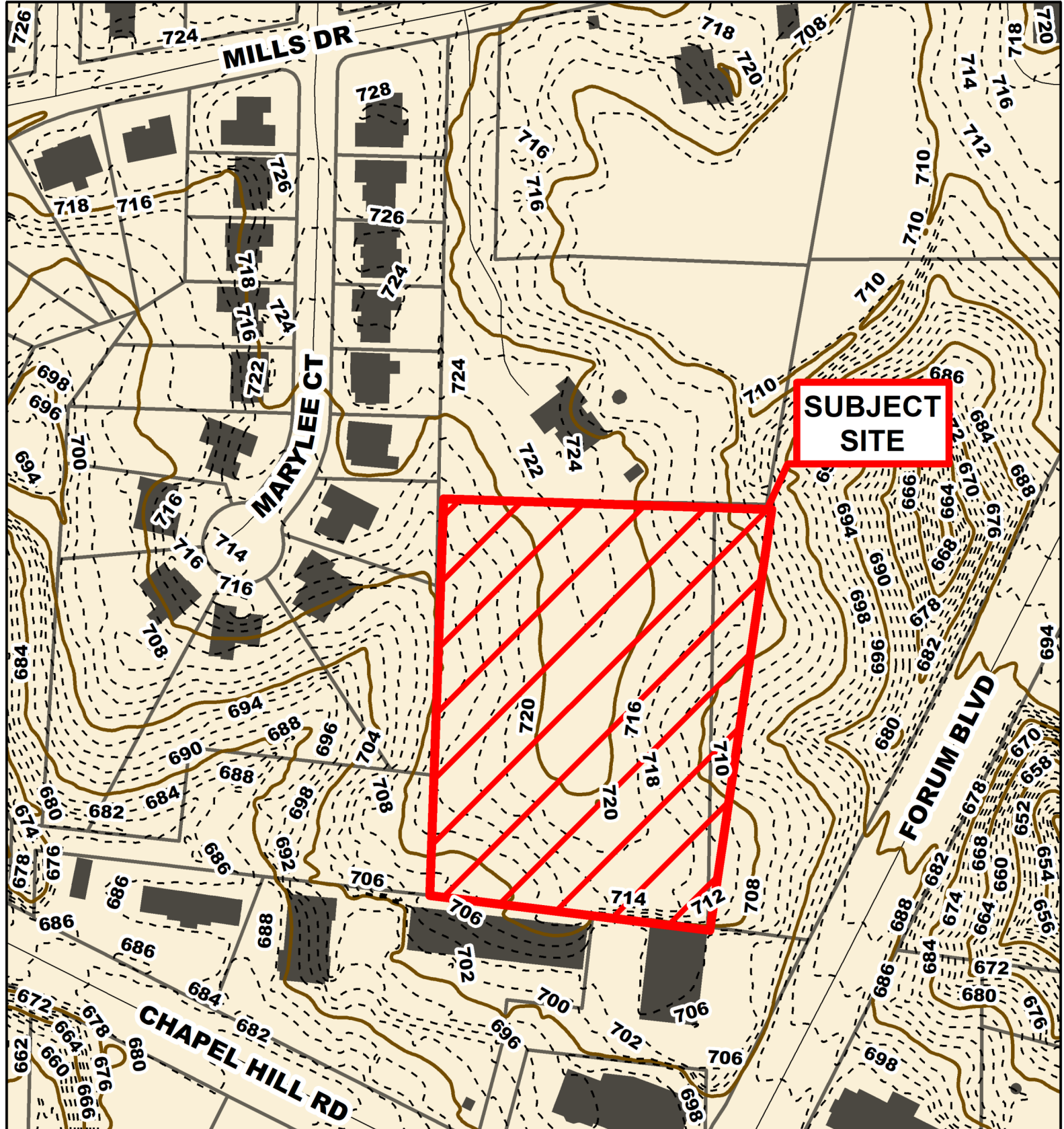


1 inch = 250 feet

2021 NearMap Aerial Photo

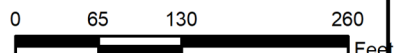
Parcel Data Source: Boone County Assessor

Created by The City of Columbia - Community Development Department



Case # 226-2022 - Mills Estates Plat III Final Plat

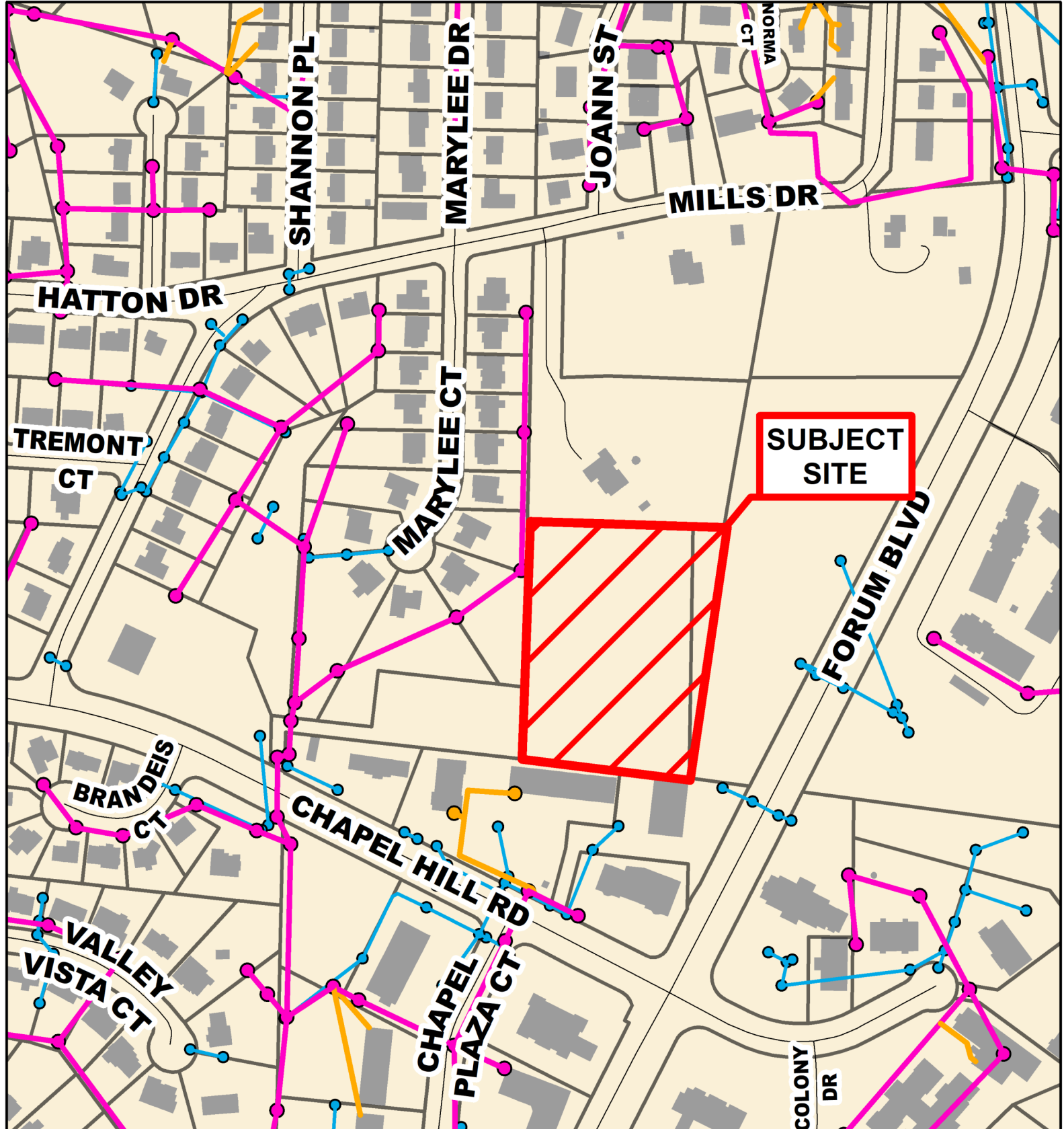
- 10 Foot Contour Lines
 Parcels
- 2 Foot Contour Lines



1 inch = 150 feet

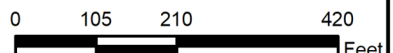
Parcel Data Source: Boone County Assessor

Created by The City of Columbia - Community Development Department



**Case # 226-2022 - Mills Estates Plat III
Final Plat**

- City Sanitary Line
- City Storm Lines
- Private Sanitary Line
- Parcels



1 inch = 250 feet

Parcel Data Source: Boone County Assessor

Created by The City of Columbia - Community Development Department